

Book "Y,"
(Supplemental to Book "W" of Group No. 17, Arizona)
4-679

2911

BOOK 2911

FIELD NOTES

of Rétracement of a

Portion of the North and West Boundaries, and a

Portion of the Subdivision Lines

of

TOWNSHIP 23 SOUTH, RANGE 15 EAST,

and Retracement of a

Portion of the South Boundary of Baca Float No. 3, (confirmed),

Of the Gila and Salt River Base and Meridian,

In the State of Arizona.

EXECUTED BY

John F. Hesse,

In the capacity of U. S. Surveyor, under instructions dated March 10, 1913,
issued by the United States Surveyor General to govern surveys included in
Group No. 17, which were approved by the Commissioner of the General Land
Office, March 20, 1913.

Retracement commenced January 7, 1917.

Retracement completed January 12, 1917.

2911

2911

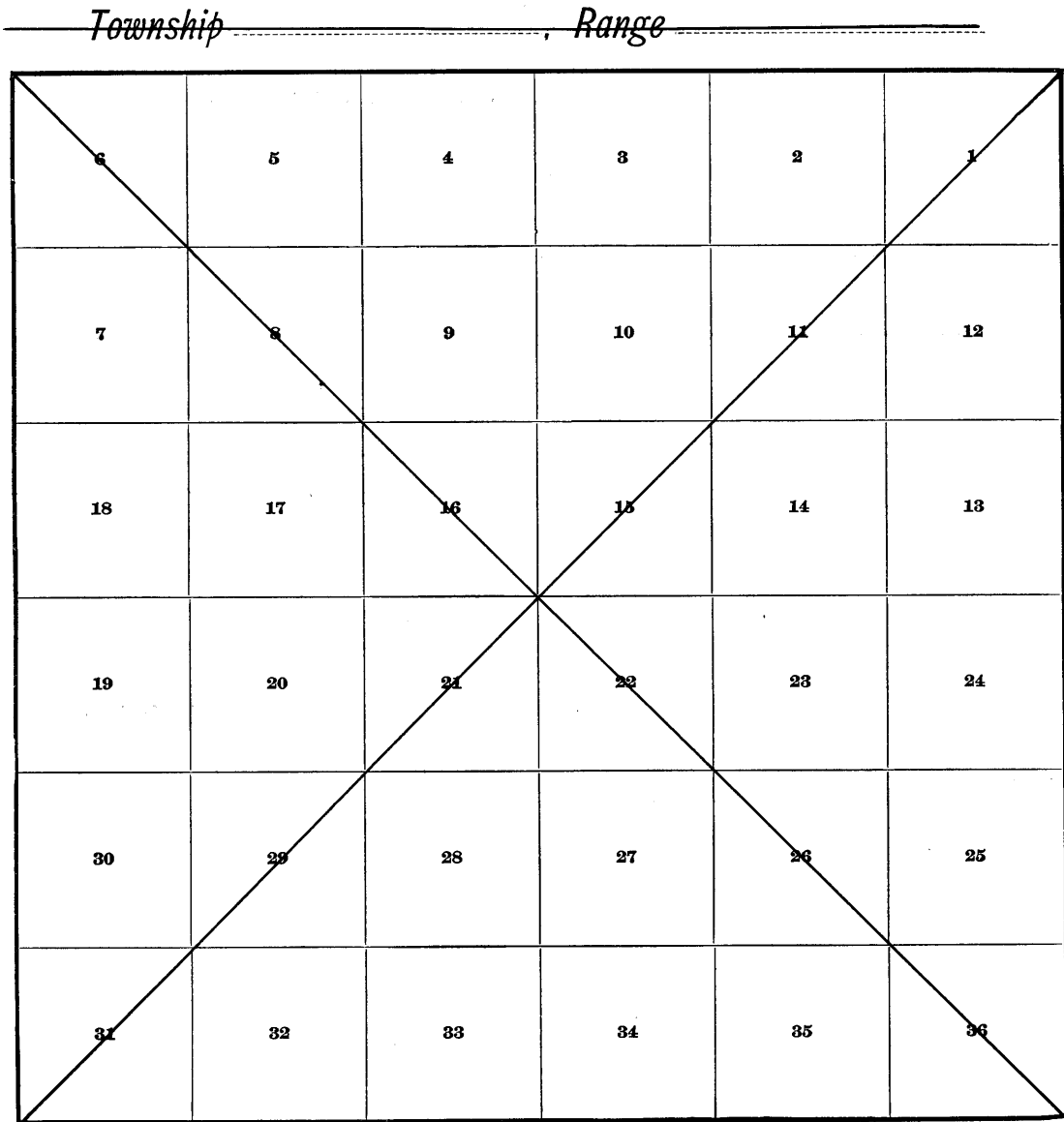
BOOK 2911

Book "Y"

(Supplemental to Book "W" of Group NO. 17, Arizona,)

(See Special Index)

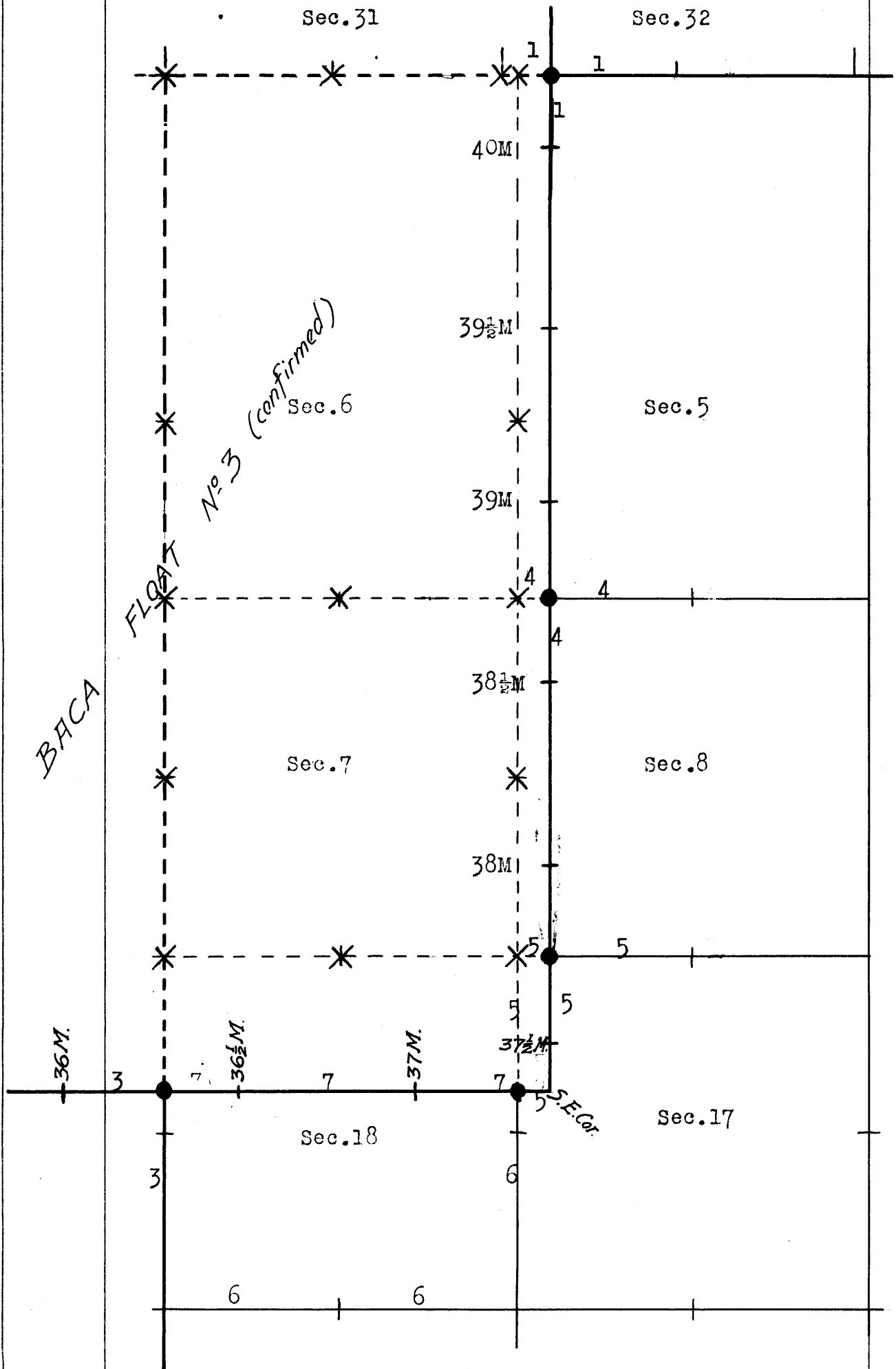
INDEX DIAGRAM.



SPECIAL INDEX DIAGRAM
SUPPLEMENTAL TO

BOOK 2911

TOWNSHIP 23 SOUTH, RANGE 15 EAST,
Book "Y," Group 17, Arizona.



X Corners destroyed.
 ● Corners established or reestablished.

Retracement of a
Portion of North bdy. of Township 23 South, Range 15 East.

Chains.

Retracement commenced January 7, 1917, and executed with an A. Lietz light mountain transit No. 6166, with solar attachment. The horizontal limb is provided with two double verniers placed opposite to each other, reading to single minutes of arc, which is also the least count of the verniers of the latitude and declination arcs. The instrument was approved by the Assistant Supervisor of Surveys for Arizona and California, after examination at Phoenix, Arizona, on January 4, 1917. I examine the adjustments of the transit, and correct all the errors; and test the solar apparatus by comparing its indications resulting from solar observations made during a.m. and p.m. hours, with a meridian determined by observations on Polaris.

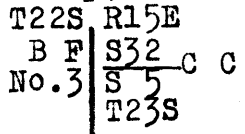
During the execution of the following retracements, whenever practicable, the adjustments of the solar attachment were tested and found correct.

40.16 January 10, 1917. From the $\frac{1}{4}$ sec. cor. of sec. 32, T. 22 S., R. 15 E. on the N. bdy. of the Tp., which is a 1 in. iron post, with brass cap, 10 ins. above ground, marked and witnessed as described by the Surveyor General (reestablished as described in Book "A" of this Group, S. $89^{\circ} 51' W.$, on a random line, on S. bdy. of sec. 32 (w. $\frac{1}{2}$). Fall 3 lks. S. of cor. of secs. 31 and 32, T. 22 S., R. 15 E., which is a 3 in. iron post with brass cap, 12 ins. above ground, marked and witnessed as described by the Surveyor General. I destroy this cor., and run N. $89^{\circ} 54' E.$, on a blank line.
Over rolling hills.

1.38 Intersect the closing cor. of secs. 5 and 6, T. 23 S., R. 15 E., which is a 2 in. iron post, with a brass cap, 12 ins. above ground, marked and witnessed as described by the Surveyor General. I destroy this cor., and continue line and measurement.

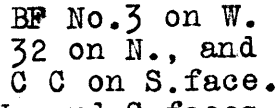
9.72 Intersect E. bdy. of Baca Float No. 3 (confirmed). 16.05 chs. N. of the 40 mile cor., which is a granite stone 8x8x8 ins. above ground, marked and witnessed as described by the Surveyor General.

At point of intersection,
Set an iron post, 3 ft. long, 2 ins. in diam., 24 ins. in the ground, for reestablished closing cor. to secs. 5 and 32, with brass cap, marked



and raise a mound of stone 2 ft. base, $1\frac{1}{2}$ ft. high, E. of cor.

From this cor., the old closing cor. set by Philip Contzen, U.S. Deputy Surveyor, brs. N. 1.16 chs. dist., which is a granite stone 10x8x8 ins. above ground, firmly set, marked



I destroy marking on N. and S. faces, and leave the marking on W face.

Thence on true line, on S. bdy. of sec. 32, continuing measurement.

- 14.40 Wash, 10 lks. wide, course S.
- 22.10 Wash, 10 lks. wide, course S.
- 31.00 Wash, 30 lks. wide, course SW.
- 35.00 Wash, 30 lks. wide, course SW.

Retracement of a
2. Portion of North bdy. of Township 23 South, Range 15 East.

Chains.

39.00

Wash, 30 lks. wide, course SW.

40.16

Intersect the $\frac{1}{4}$ sec. cor. of sec. 32, hereinbefore described.

Land, rolling hills.

Soil, rocky, 4th rate.

No timber.

Good grass.

Jan. 10, 1917.

I destroyed the cor. of Ts. 22 and 23 S., Rs. 14 and 15 E.,
and the $\frac{1}{4}$ sec. cor. of sec. 31, on the N. bdy. of the Tp.,
by reason of their being within the Baca Float No. 3
(confirmed).

Retracement of a portion of West bdy. of Township 23 S. R. 15 E. 3.

Chains.

January 11, 1917.

From the cor. of secs. 13, 18, 19 and 24, on the W. bdy. of Tp., which is a 3 in. iron post, with brass cap, 12 ins. above ground, marked and witnessed as described by the Surveyor General, (described in Book "A" of this Group), North, on a random line, bet. secs. 13 and 18.

Over rolling land, through dense brush.

1.80 Wash, 50 lks. wide, course SW.

3.40 Road brs. NE. and SW.

10.40 Wash, 30 lks. wide, course SW.

14.00 Wash, 20 lks. wide, course SW.

15.95 Wash, 20 lks. wide, course SW.

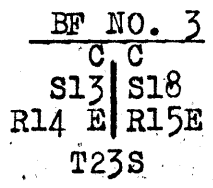
40.36 Fall 29 lks. E. of the 1/4 sec. cor., which is a granite stone 10x8x8 ins., above ground, firmly set, marked and witnessed as described by the Surveyor General. (The iron post described in Book "A" of this Group could not be found).

The true course and distance of this half mile is N. 0° 25' W., 40.36 chs.

Thence, North, bet. secs. 13 and 18 (north half). Over hilly land.

1.10 Wash, 10 lks. wide, course SE.

9.12 Intersect the closing cor. on S. bdy. of Baca Float No. 3, (confirmed), which is a stone 8x8x6 ins. above ground, firmly set, marked and witnessed as described by the Surveyor General (set by Philip Contzen, U.S. Deputy Surveyor), alongside of which I set an iron post 3 ft. long, 3 ins. in diam., 24 ins. in the ground, for re-established closing cor. of secs. 13 and 18, with brass cap, marked



from which,

An oak, 14 ins. in diam., brs. S. 43 1/2° E., 123 lks. dist., marked T23S R15E S18 CC BT.

An oak, 10 ins. in diam., brs. S 87 3/4° W., 150 lks. dist., marked T23 S R14E S13CCBT.

From this closing cor., Mile cor. No. 36 on S. bdy. of Baca Float No. 3, brs. W. 22.98 chs. dist.

Land, hilly.
Soil, stony, 3rd rate.
No timber.
Poor grass.

January 9, 1917.

Continue north, on a blank line, on the W. bdy. of the Tp., within the Baca Float No. 3, (confirmed), destroying all the corners thereon.

Retracement of a
4 Portion of the Subdivision lines of Township 23 South, Range 15 East.

Chains.

January 7, 1917.

From the $\frac{1}{4}$ sec. cor., bet. secs. 5 and 8, which is a 1 in. iron post, with a brass cap, 10 ins. above ground, marked and witnessed as described by the Surveyor General (described in Book "W" of this Group),

S. $89^{\circ} 58' W.$, on a random line, bet. secs. 5 and 8.

40.05 Fall 13 lks. N. of cor. of secs. 5, 6, 7 and 8, which is a 2 in. iron post, with brass cap, 12 ins. above ground, marked and witnessed as described by the Surveyor General. I destroy this cor., it being within the Baca Float No. 3, (confirmed).

Thence,

N. $89^{\circ} 47' E.$, on a blank line.

Over rolling hills.

7.17 Intersect E. bdy. of Baca Float No. 3, (confirmed) at a point 18.63 chs. north of the $38\frac{1}{2}$ mile cor., which is a granite stone 12x12x8 ins., above ground, marked and witnessed as described by the Surveyor General.

At point of intersection, I set an iron post 3 ft. long, 2 ins. in diam., 24 ins. in the ground for closing cor. of secs. 5 and 8, with a brass cap, marked

T23S R15E

BFNo. 3 | $\begin{array}{c} S 5 \\ S 8 \end{array}$ C C

from which,

An oak, 14 ins. in diam., brs. N. $79\frac{1}{2}^{\circ} E.$, 103 lks. dist., marked T 23 S R15E S5CCBT.

An oak, 10 ins. in diam., brs. S. $75^{\circ} E.$, 48 lks. dist., marked T 23 S R15 E S 8 C C B T.

Thence continuing measurement, on a true line, bet. secs. 5 and 8.

12.20 Wire fence brs. NE. and SW.

15.72 Road brs. NE. to Patagonia and SW. to Nogales.

20.41 Wash, 10 lks. wide, course SW.

28.52 Wire fence brs. NE. and SW.

30.07 Wash, 10 lks. wide, course SE.

40.05 Intersect the $\frac{1}{4}$ sec. cor. bet. secs. 5 and 8, hereinbefore described.

Land, rolling hills.

Soil, stony, 4th rate.

Timber, a very few oaks.

Good grass.

Jan. 7 and 12, 1917.

Retracement of a

Portion of the Subdivision lines of Township 23 South, Range 15 E. 5.

Chains.

January 8, 1917.

From the $\frac{1}{4}$ sec. cor., bet. secs. 8 and 17, which is a 1 in. iron post, with a brass cap, 10 ins. above ground, marked and witnessed as described by the Surveyor General (described in Book "W" of this Group),

West, on a random line, bet. secs. 8 and 17.

40.04 Intersect cor. of secs. 7, 8, 17 and 18, which is a 2 ins. iron post, with brass cap, 12 ins. above ground, marked and witnessed as described by the Surveyor General. I destroy this cor., it being within the Baca Float No. 3, (confirmed).

Thence
East, on a blank line.
Over hilly land, through dense brush.

7.01 Intersect E^W bdy. of Baca Float No. 3 (confirmed), at a point 19.12 chs. north of the $37\frac{1}{2}$ mile cor., which is a granite stone 8x8x8 ins. above ground, firmly set, marked and witnessed as described by the Surveyor General.

At point of intersection, set an iron post 3 ft. long, 2 ins. in diam., 24 ins. in the ground for closing cor. of secs. 8 and 17, with a brass cap, marked

T23S	R15E	
BF NO3	S 8	CC
	SI7	

and raise a mound of stone 2 ft. base, $1\frac{1}{2}$ ft. high, E. of cor.

Thence continuing measurement, on a true line, bet. secs. 8 and 17.

18.46 Wash, 30 lks. wide, course S.
21.90 Wash, 20 lks. wide, course SW.

40.04 Intersect the $\frac{1}{4}$ sec. cor., between secs. 8 and 17, hereinbefore described.

Land, hilly.
Soil, stony, 3rd rate.
No timber.
Undergrowth, mesquite.
Poor grass.

From the point where I destroyed the cor. of secs. 7, 8, 17 and 18, as hereinbefore described,
S. $0^{\circ}3'E.$, on a random line, bet. secs. 17 and 18.

39.97 Intersect the $\frac{1}{4}$ sec. cor. bet. secs. 17 and 18, which is a 1 in. iron post, 10 ins. above ground, marked and witnessed as described by the Surveyor General (described in Book "W" of this Group).

Thence
N. $0^{\circ}3'W$ on a true line, bet. secs. 17 and 18. (N. $\frac{1}{2}$).
Over rolling land.

10.07 Intersect S^W bdy. of Baca Float No. 3 (confirmed), at a point 6.93 chs. W. of the SE. cor. of Grant, which is a granite stone, 14x14x12 ins. above ground, marked and witnessed as described by the Surveyor General.

At point of intersection I set an iron post 3 ft. long, 1 in. in diam., 26 ins. in the ground, for closing cor. of secs. 17 and 18, with brass cap, marked

BF No. 3	
C	C
S18	S17
T23S	R15E

and raise a mound of stone 2 ft. base, $1\frac{1}{2}$ ft. high, S. of cor. (No 2 in. post available).

Thence continuing measurement on a blank line within the Baca Float No. 3 (confirmed).

15.00 Wash, 10 lks. wide, course SW. 85 ft. below closing cor., and over level land.

Retracement of a

6. Portion of the Subdivision lines of Township 23 S., R. 15 E.

Chains.

30.15 Road brs. NE. and SW.
 33.15 Wash, 30 lks. wide, course SW.
 36.30 Wash, 50 lks. wide, course SW.
 39.97 The point where I destroyed the cor. of secs. 7, 8, 17 and 18, as hereinbefore described.
 Land, rolling and level.
 Soil, stony, 3rd rate.
 No timber.
 Undergrowth, mesquite.
 Poor grass.

Jan. 8, 1917.

I destroy all sec. and $\frac{1}{4}$ sec. cors. within the Baca Float No. 3.

Jan. 11, 1917.

Return to the $\frac{1}{4}$ sec. cor. bet. secs. 17 and 18, hereinbefore described, and run S. $0^{\circ} 03' E.$, on a random, bet. secs. 17 and 18 (S. half).
 Over rolling land, with scattering timber and brush.
 10.48 Wash, 15 lks. wide, course SW.
 14.98 Wash, 10 lks. wide, course W.
 34.50 Descend into canyon.
 40.00 Point for the cor. of secs. 17, 18, 19 and 20 in wash, 30 lks. wide, course SW. 50 ft. below 34.50 ch. point.
 40.53 Fall 17 lks. E. of the Witness cor. to the cor. of secs. 17, 18, 19 and 20, which is a 2 in. iron post, 12 ins. above ground, with brass cap, marked and witnessed as described by the Surveyor General, (described in Book "W" of this Group). as follows:
 True course and distance of this half mile is therefore S. $0^{\circ} 11' W.$, 40.03 chs.
 Land, rolling.
 Soil, stony, 3rd rate.
 Timber, scattering oaks.
 Undergrowth, mesquite.
 Fair grass.

From true point for cor. of secs. 17, 18, 19 and 20, described above,

West, on a random line, bet. secs. 18 and 19.

Over rolling land, ascend.
 5.00 Top of ascent 58 ft. above cor.; thence through dense brush.
 39.85 Road brs. NE. to Patagonia and SW. to Nogales.
 40.29 Fall 35 lks. S. of $\frac{1}{4}$ sec. cor., which is a 1 in. iron post, 10 ins. above ground, marked and witnessed as described by the Surveyor General (described in Book "W" of this Group).
 True course and distance of this half mile is therefore N. $89^{\circ} 30' W.$, 40.29 chs.

Thence

West, on a random line, bet. secs. 18 and 19, (west half).
 4.21 Wash, 30 lks. wide, course SW.
 38.68 Fall 16 lks. S. of cor. of secs. 13, 18, 19 and 24 on W. bdy. of Tp., which is a 3 in. iron post, hereinbefore described.
 True course and distance of this half mile is therefore N. $89^{\circ} 46' W.$, 38.68 chs.
 Land, rolling.
 Soil, stony, 4th rate.
 No timber.
 Undergrowth, mesquite.
 Poor grass.

Jan. 11, 1917.

Retracement of part of S. bdy. of Baca Float No. 3 (confirmed)

Chains.

January 11, 1917.
From the closing cor. of secs. 13 and 18, on W. bdy. of Tp. 23 S., R. 15 E., hereinbefore described, East, on a random line, on S. bdy. of Baca Float No. 3 (confirmed).

- 2.80 Wash, 40 lks. wide, course S.
- 12.09 Wash, 40 lks. wide, course S.
- 16.93 Intersect the 36 1/2 mile cor., which is a granite stone, 10x8x8 ins. above ground, firmly set, marked and witnessed as described by the Surveyor General.
Thence, East, on a random line,
- 11.03 Wash, 100 lks. wide, course SW.
- 19.03 Wire fence, brs. NE. and SW. to ST.
- 21.83 Wire Road, brs. NE. and SW.
- 40.17 Intersect the 37 mile cor., which is a granite stone 12x8x8 ins. above ground, marked and witnessed as described by the Surveyor General.
Thence,
East, on a random line.
- 18.60 Road brs. NE. to Patagonia and SW. to Nogales.
- 22.28 Intersect the closing cor. of secs. 17 and 18, hereinbefore described.
Land, rolling.
Soil, stony, 4th rate.
A few scattering oaks.
Fair grass.

Jan. 11, 1917.

Boundaries of sec. 5, Township 23 S., R. 15 E.
Table of Latitudes, Departures, and closing errors.

Line designated.	Course.	Dist.	Latitudes.		Departures.	
			N.	S.	E.	W.
South bdy.	S. 89° 58' W.	39.95		.02		39.95
	S. 89° 47' W.	32.88		.12		32.88
West bdy. (E. bdy of Baca Float No. 3)	North,	117.42	117.42			
North bdy. (N. bdy. of Tp.)	N. 89° 54' E.	30.44	.05		30.44	
	N. 89° 33' E.	39.00	.31		39.00	
	N. 89° 58' E.	3.31			3.31	
East bdy.	S. 0° 2' E.	118.00		118.00	.07	
Convergency,					.02	
Totals.			117.78	118.14	72.84	72.83
				117.78	72.83	
Error in latitude,			0.36			
Error in departure,					0.01	

8

Boundaries of sec. 8, T. 23 S., R. 15 East.
Latitudes, departures and closing errors.

Line designated.	Course.	Dist.	Latitudes.		Departures.	
			N.	S.	E.	W.
South bdy.	West,	73.00				73.00
West bdy. (E. bdy. of Baca Float No. 3)	North,	79.51	79.51			
North bdy.	N. 89° 47' E.	32.88	.12		32.88	
	N. 89° 58' E.	39.95	.02		39.95	
East bdy.	S. 0° 2' E.	80.00		80.00	.04	
Convergency,					.01	
	Totals,		79.65	80.00	72.88	73.00
				79.65		72.88
	Error in latitude,			0.35		
	Error in departure,					0.12

Boundaries of sec. 17, T. 23 S., R. 15 East.
Latitudes, departures and closing errors.

Line designated.	Course.	Dist.	Latitudes.		Departures.	
			N.	S.	E.	W.
South bdy.	S. 89° 55' W.	80.02		.12		80.02
West bdy.	N. 0° 11' E.	40.03	40.03		.13	
	N. 0° 3' W.	10.07	10.07			.01
West bdy. (S&E. bdrs. of Baca Float No. 3)	East,	6.93			6.93	
	North,	29.80	29.80			
North bdy.,	East,	73.00			73.00	
East bdy.,	S. 0° 2' E.	80.00		80.00	.04	
Convergency,					.01	
	Totals,		79.90	80.12	80.11	80.03
				79.90	80.03	
	Error in latitude,			0.22		
	Error in departure,					0.08

Boundaries of sec. 18, T. 23 S., R. 15 East.
Latitudes, departures and closing errors.

Line designated.	Course.	Dist.	Latitudes.		Departures.	
			N.	S.	E.	W.
South bdy.	N. 89° 30' W.	40.29	.35			40.29
	N. 89° 46' W.	38.68	.16			38.68
West bdy. (W. bdy. of Tp.)	N. 0° 25' W.	40.36	40.36			.29
	North,	9.12	9.12			
North bdy. (S. bdy. of Baca Float No. 3)	East,	79.38			79.38	
East bdy.,	S. 0° 3' E.	10.07		10.07	.01	
	S. 0° 11' W.	40.03		40.03		.13
Convergency,					.01	
	Totals,		49.99	50.10	79.40	79.39
				49.99	79.39	
	Error in latitude,			0.11		
	Error in departure,					0.01

CERTIFICATE
~~FINAL OATH~~ OF UNITED STATES SURVEYOR.

I, John F. Hesse, U. S. Surveyor, ^{hereby certify on honor}~~do solemnly swear~~ that, in pursuance of special instructions received from the U. S. Surveyor General for Arizona for Group No. 17 bearing date of the 10th day of March, 1913, I have well, faithfully, and truly, in my own proper person, and in strict conformity with said instructions, the Manual of Surveying Instructions, and the laws of the United States, ^{retraced}~~surveyed~~ all those parts or portions of

the North boundary
the West boundary and
Subdivision lines of
Township 23 South Range 15 East, and the South bdy of the
Baca Float No. 3 (confirmed) S. and E. of the Gila and Salt
River Base and Meridian, in the State of Arizona, which are represented in the foregoing field notes as having been executed by me, and under my direction; and I do further ^{certify on honor}~~solemnly swear~~ that all the corners of said ^{retracement}~~survey~~ have been established and perpetuated in strict accordance with the Manual of Surveying Instructions, and the special written instructions of the U. S. Surveyor General for Arizona for Group 17 and in the specific manner described in the field notes, and that the foregoing are the original field notes of such ~~survey~~ ^{retracement}.

John F. Hesse
U. S. Surveyor.

Subscribed by said _____, and sworn to before me }
this _____ day of _____, 1913



APPROVAL.

OFFICE OF THE UNITED STATES SURVEYOR GENERAL,

Phoenix Arizona, April 27, 1917

The foregoing field notes of the ~~survey of~~ Retracement of
part of the North boundary
part of the West boundary and
part of the Subdivision lines of
Township No. 23 South, Range No. 15 East of the
Gila and Salt River Base and Meridian, in the State of Arizona
and part of the South Bdy. of the Baca Float No. 3 (confirmed)
executed by John F. Hesse, U.S. Surveyor
under ~~his~~ special instructions dated March 10, 1913 for Group 17, Arizona, ~~191~~, having been critically examined, and the necessary corrections and explanations made, the said field notes, and the ^{retracements}~~surveys~~ they describe, are hereby approved.

Strand P. Frost
U. S. Surveyor General.
of Arizona.

I certify that the foregoing transcript of the field notes of the above described surveys in _____, has been correctly copied from the original notes on file in this office.