

BOOK 3869

FIELD NOTES

OF THE RETRACEMENT OF

"LINNA and CLARA" patented lode mining claims, Min. Surv. No. 1364A

Part of the South Boundary

and Part of the Subdivision Lines of Township 14 North, Range 2 West

AND OF THE RESURVEY OF

Boundaries of the Whipple Barracks Military Reservation

Part of the South Boundary

Part of the East Boundary

and

Part of the Subdivision Lines

of

Township 14 North, Range 2 West

Of the Gila and Salt River Base and Meridian,

In the State of Arizona

EXECUTED BY

Sidney E. Blout, U.S. Cadastral Engineer

In the capacity of U. S. Surveyor, under ^{Supplemental} Special Instructions dated May 31, 1927, issued by the District Cadastral Engineer to govern surveys included in Group No. 140 Arizona, which were approved by the Commissioner of the General Land Office, June 13, 1927, and Assignment Instructions dated July 1, 1927.

Retracement
and Resurvey commenced October 26, 1927

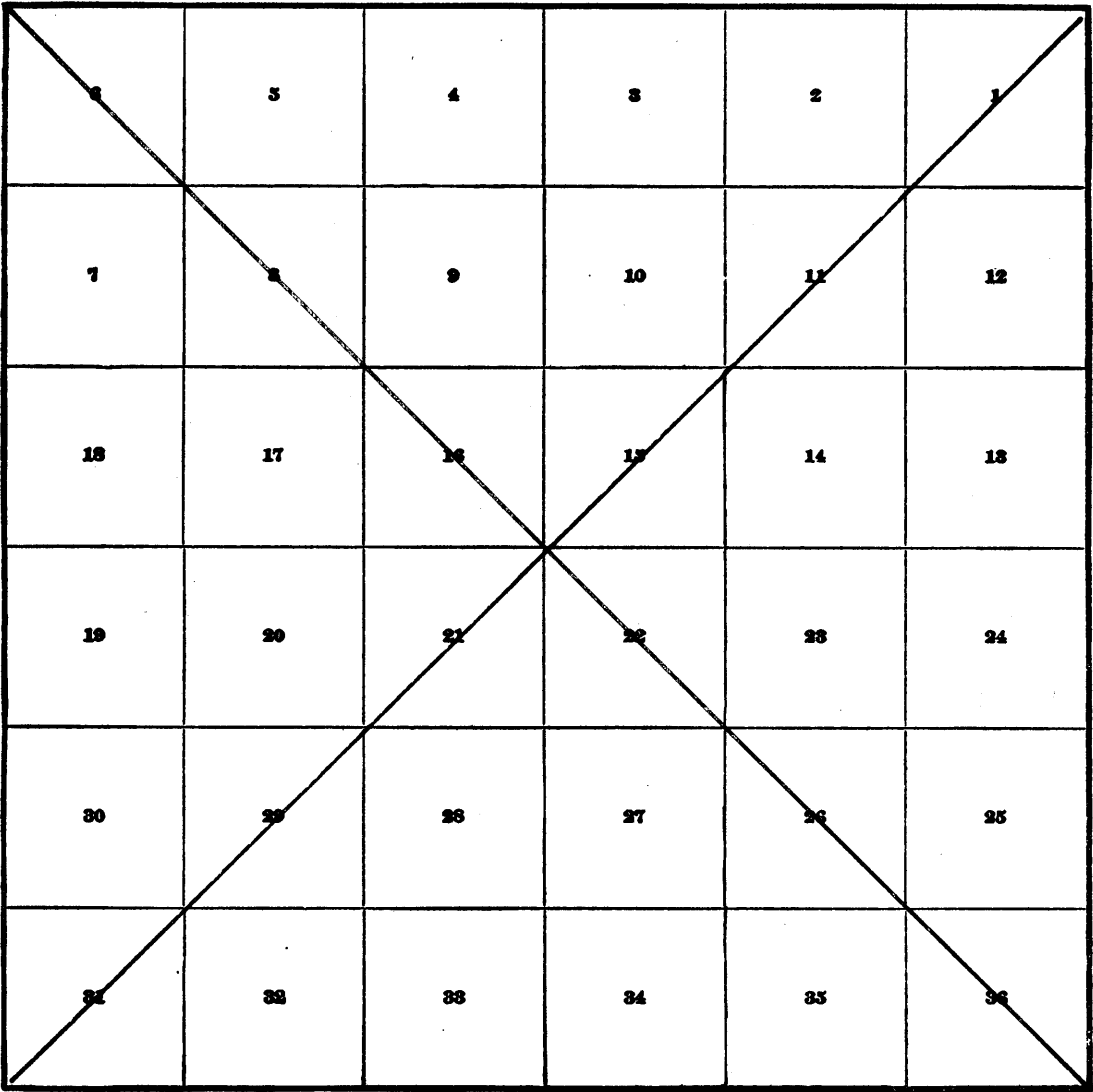
Retracement
and Resurvey completed October 2, 1928

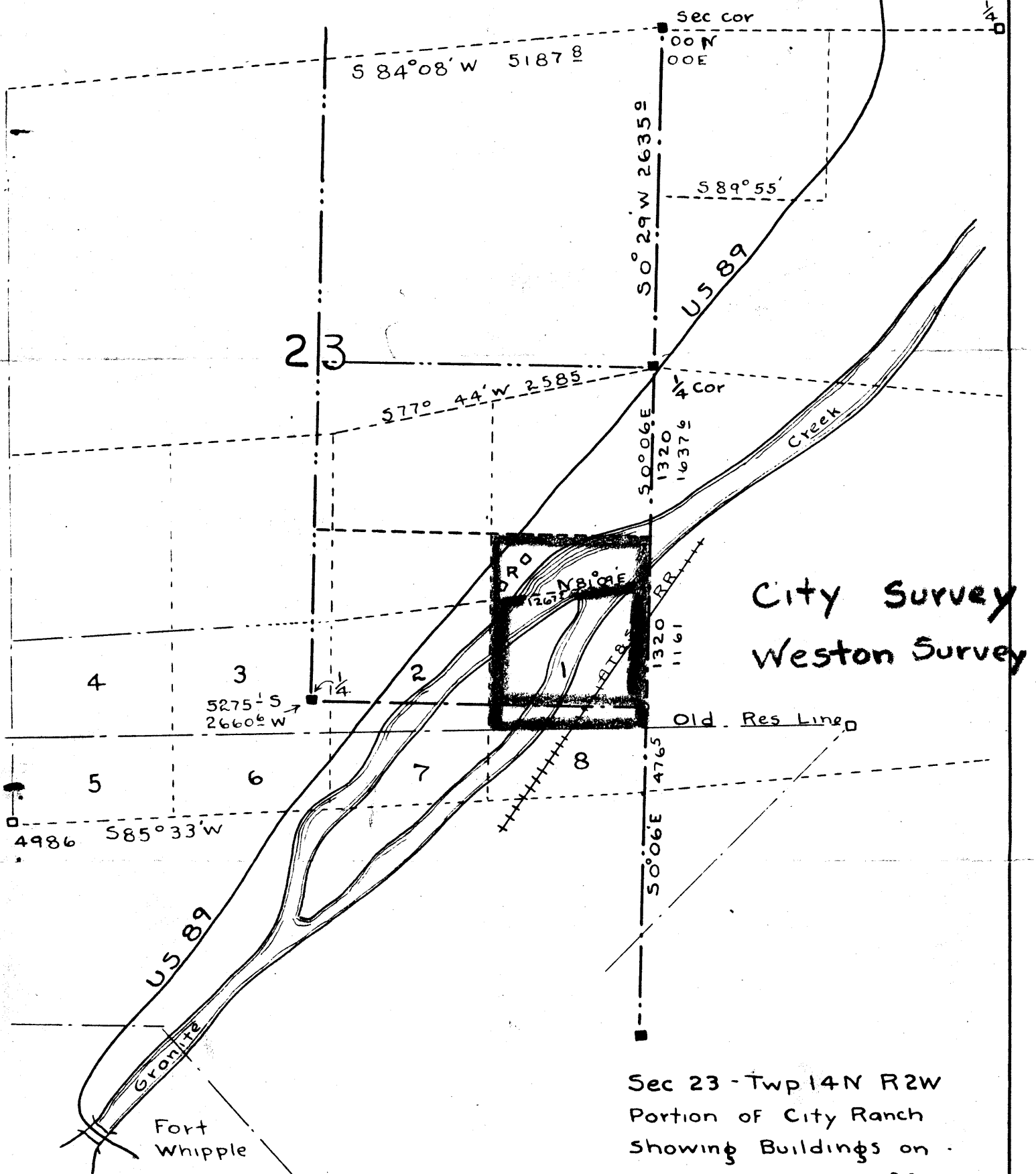
3869

3869

~~INDEX DIAGRAM.~~

~~Township~~ _____, ~~Range~~ _____





City Survey
Weston Survey

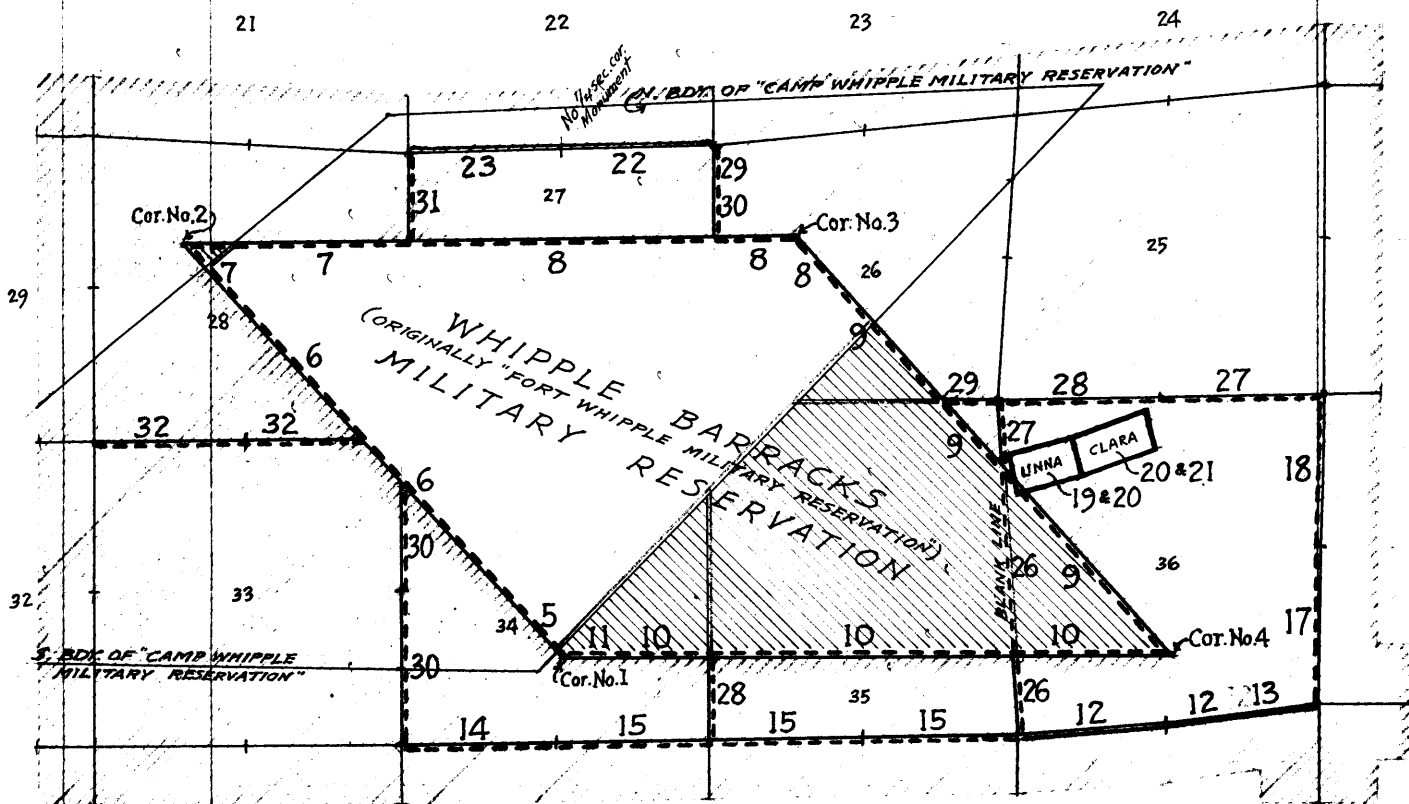
Sec 23 - Twp 14N R2W
Portion of City Ranch
Showing Buildings on
original Lot 1 Sec 23
built in 1890
Scale 1" = 1000' 9-27-34

Arthur J. Kline
City Engineer

Book "F"
Group 140 Arizona
Township 14 North Range 2 West

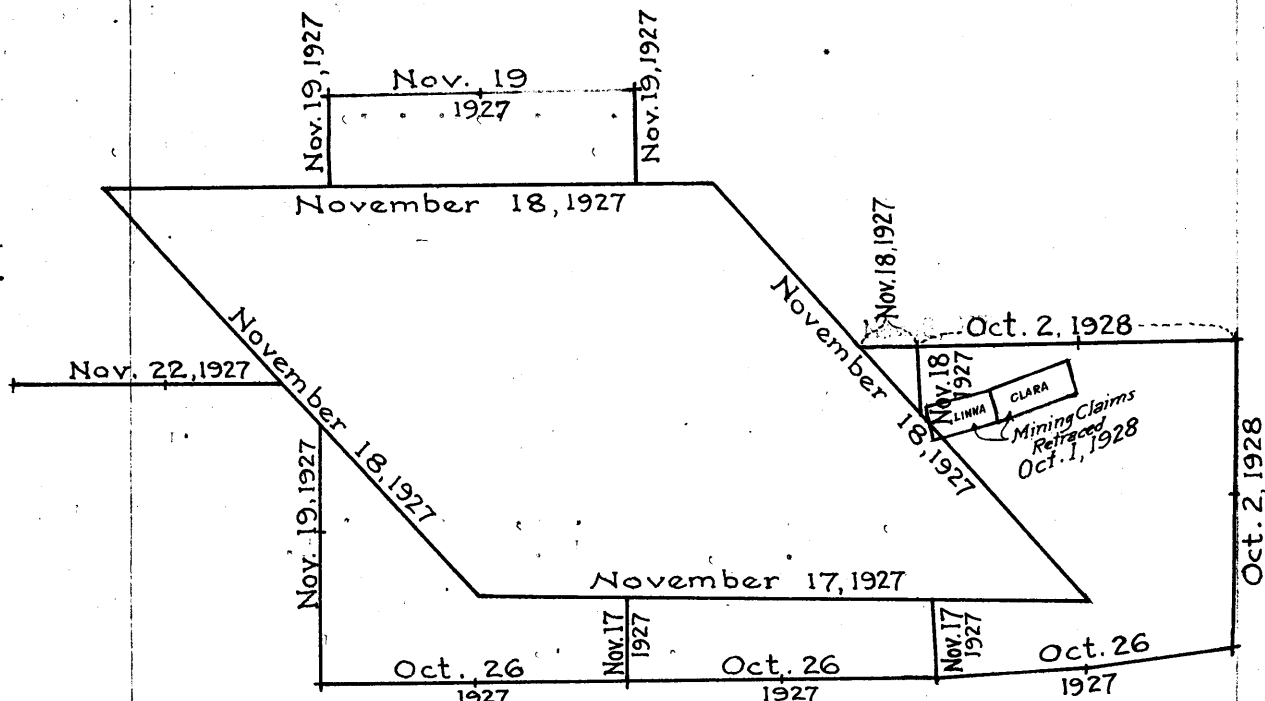
BOOK 3869

~INDEX-DIAGRAM~



- Lines resurveyed under this group.
- Lines retraced under this group.
- Accepted surveyed, retraced or resurveyed lines.
- Accepted surveyed lines which were eliminated by the 1875 survey of "Fort Whipple M.R."
- ▨ Areas surveyed as per accepted plats on file, and so designated at the present time.
- ▨ Surveyed areas which were eliminated by the 1875 survey of "Fort Whipple Mil. Reserv."

~DATE-DIAGRAM~

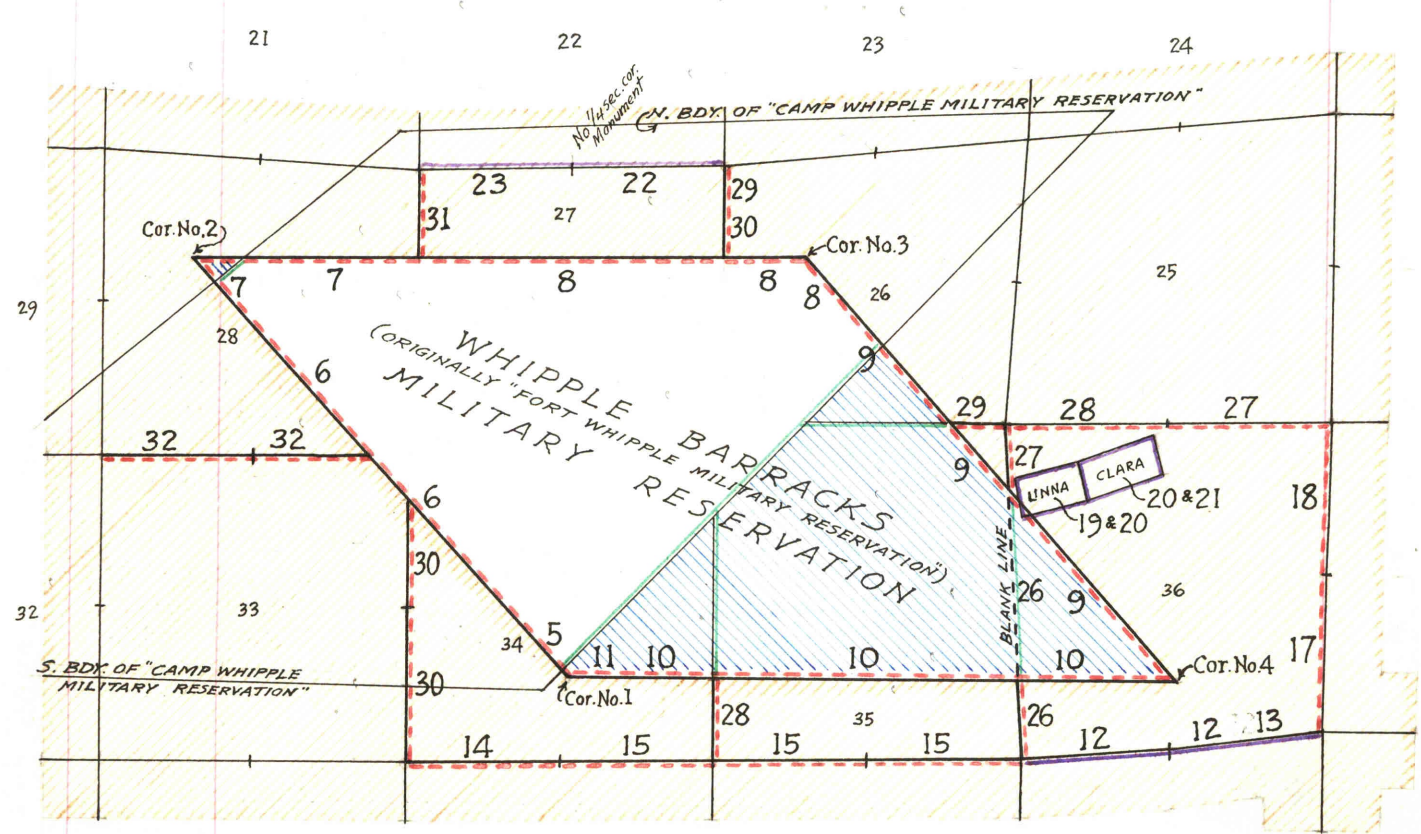


- Resurveyed by Sidney E. Blout, U.S. Cadastral Engineer, on dates shown thereon.
- Retraced by Sidney E. Blout, U.S.C.E. on date shown thereon.

Book "F"
Group 140 Arizona
Township 14 North Range 2 West

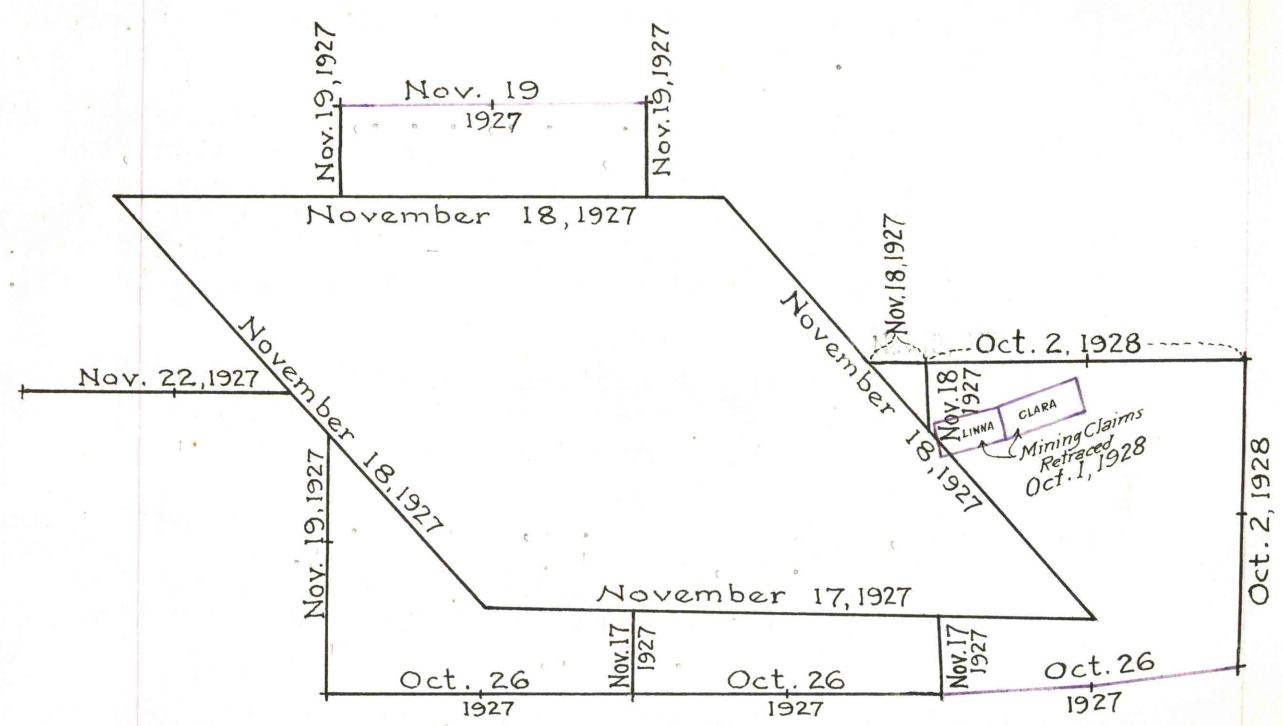
BOOK 3869

~INDEX~DIAGRAM~



- Lines resurveyed under this group.
- Lines retraced under this group.
- Accepted surveyed, retraced or resurveyed lines.
- Accepted surveyed lines which were eliminated by the 1875 survey of "Fort Whipple M.R."
- Areas surveyed as per accepted plats on file, and so designated at the present time.
- Surveyed areas which were eliminated by the 1875 survey of "Fort Whipple Mil. Reserv."

~DATE~DIAGRAM~



- Resurveyed by Sidney E. Blout, U.S. Cadastral Engineer, on dates shown thereon.
- Retraced by Sidney E. Blout, U.S.C.E. on date shown thereon.

The Resurveys hereinafter described were executed on dates shown on diagram on page 1 hereof by Sidney E Blout, U.S. Cadastral Engineer, using a Buff "Rocky Mountain Favorite" Solar transit No. 16724 with U-shaped standards, $4\frac{1}{2}$ inch horizontal circle, 4 inch vertical circle, and Improved Smith solar attachment.

The instrument was examined, tested on the meridian at the Federal Building at Phoenix Arizona, found correct and was approved by the District Cadastral Engineer for Arizona and California, July 1, 1927, conditional upon satisfactory field tests.

Unless otherwise specified, all azimuth determinations are accomplished with the solar attachment, except the special observations upon Polaris and the sun for meridian, upon which to test the solar apparatus

All measurements are made with a Lallie 5-chain steel tape, compared with a Chesterman standard steel tape, and found correct. the measurements are made on the slope, the vertical angles determined with a clinometer, and the slope measurements, properly reduced to true horizontal distances.

TEST OF BUFF SOLAR TRANSIT NO. 16724.

October 20, 1927. At corner No. 1 of the WHIPPLE BARRACKS MILITARY RESERVATION in sec. 34, T. 14N., R. 2 W., of the Gila and Salt River Base and Meridian, Arizona, in Latitude $34^{\circ}32'48''$ N., and Longitude $112^{\circ}27'10''$ W. examine the adjustments of the transit and correct all errors, then to test the solar apparatus by comparing its indications, resulting from solar observations, made during a.m., and p.m., hours with a meridian established by observations on Polaris; proceed as follows;

h m
 October 20, At 3 30 p.m., app. time set off $34^{\circ}33'$ N. on the lat arc, $10^{\circ}13'$ S. on the decl. arc and determine a meridian with the solar whence an insulator jar on tower of electric power line bears $N0^{\circ}8'$ W. about 120 chs. dist.

h m
 At same station at 5 40.3 p.m., l.m.t., observe Polaris at eastern elongation, making four observations, two each with the telescope in direct and reversed positions and read the mean deflection angle from the star in the direction N-W. to the insulator jar on tower of electric power line about 120 chs. dist.

Azimuth of Polaris at eastern elongation $= 1^{\circ}18'52''$
 Mean deflection angle $= 1^{\circ}26'00''$
 True bearing of insulator jar $= N0^{\circ}07'08''$ W.

h m
 October 21, 1927. At 8 30 a.m., app. time. set off $34^{\circ}33'$ N. on the lat. arc, $10^{\circ}28\frac{1}{2}'$ S. on the decl. arc and determine a meridian with the solar, from which the insulator jar on tower of electric power line about 120 chs. dist., bears $N0^{\circ}7'$ W.

At the same station with the lat. arc unchanged, observe the sun on the meridian at apparent noon and obtain a reading of $10^{\circ}32'$ S. on the decl. arc, which

agrees with the computed declination of the sun for this hour.

As all of the solar observations made during the usual hours of solar work agree within 1'30" with the meridian established by Polaris observations, conclude that the adjustments of the instrument are satisfactory.

Resurvey of the Boundaries of "Whipple Barracks Military Reservation"

chains

The Military Reservation now designated and known as the "Whipple Barracks Military Reservation" was, from 1864 to 1875, designated as "Camp Whipple", and from 1875 to 1879 was designated as "Fort Whipple", and from 1879 to the present time has bore its present designation.

The boundaries of "Camp Whipple" enclosing an area of 2,888.00 acres in secs. 21 to 29 incl., and secs. 31 to 35 incl., T.14 N., R.2 W., were surveyed and its four corners established, in 1869, by Engineers of the U.S. War Department. No field notes of said survey are on file in the Public Survey Office, Phoenix, Arizona.

The subdivision lines of T.14 N., R.2 W. were surveyed in 1871 by S.W. Foreman, U.S.D.S. who established closing cors. on the boundaries of "Camp Whipple" at the several points of intersection of said subdivision lines, as delineated on plat of said Tp., approved Oct. 20, 1871.

The boundaries of "Fort Whipple" enclosing an area of 1,731.87 acres in secs. 26 to 28 incl., and secs. 33 to 36 incl., T.14 N., R.2 W., were surveyed and its four cors. established, in 1875 by Engineers of the U.S. War Department. No field notes of this survey are on file in the Public Survey Office at Phoenix, Arizona.

This Military Reservation superseded "Camp Whipple" with which it was in conflict.

The portion of "Camp Whipple" not in conflict with "Fort Whipple" was subdivided in 1875 by C.B. Foster, U.S. D.S., who retraced the West and North bdrs. of "Fort Whipple" and established closing cors. thereon at the several points of intersection of the subdivision lines. Deputy Surveyor Foster did not retrace the East and South bdrs. of "Fort Whipple" and made no retracement or resurvey of the subdivision lines intersecting said bdrs.

In 1879, when the Army Post and Depot on the reservation were united, "Fort Whipple" was officially designated as "Whipple Barracks Military Reservation", with no change in the location of the boundaries.

In 1890, Engineers of the U.S. War Department, under the direction of Charles L. Collins, Acting Engineer Officer, resurveyed the bdrs. of "Whipple Barracks Military Reservation", reconstructing the four cors. thereof, and establishing boundary line monuments on the bdrs. between the cors. No field notes of this resurvey are on file in the Public Survey Office at Phoenix, Arizona.

No retracement or resurvey other than those mentioned above, is of record.

The following notes describe a resurvey of the Boundaries of "Whipple Barracks Military Reservation" in secs. 26, 27, 28, 33, 34, 35 and 36, T.14 N., R.2 W., G. & S.R. B. & M., Arizona, adjoining the City of Prescott, Yavapai County.

Retracement for Resurvey.

From the SW. cor. (No. 1) of "Whipple Barracks Military Reservation" hereinafter described,
N. 41° 43' 50" W., on random line, on W. bdy. (line 1-2) of the reservation.

145.44 Fall 25 lks. S. 48° 16' 10" W. of NW. cor. (No. 2) of the reservation, hereinafter described.
True course and dist. of W. bdy. (line 1-2) of the reservation are therefore, N. 41° 50' W., 145.44 chs.

160.00 From NW. cor. (No. 2) of W.B.M.R.,
East, on random line, on N. bdy. (line 2-3) of W.B.M.R.
Diligent search in this vicinity fails to reveal a trace of NE. cor. (No. 3) of the reservation.
Set temp. NE. cor. (No. 3).

From temp. NE. cor. (No. 3)
S. 41° 43' 50" E., on random line, on E. bdy. (line
reservation.

Resurvey of the boundaries of the Whipple Barracks Military Reservation.

Chains

145.34 Fall 259 lks.E.of the SE.cor.,(No.4) of the Reservation,
hereinafter described

From the SE.cor.,(No.4) of Reservation,
West, on random line, on S. bdy. (line 4-1) of the Reservation.

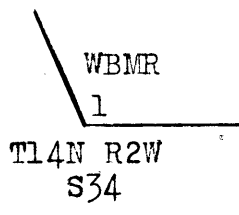
157.27 Fall 9 lks. N.of the SW.cor.(No.1):
True course and dist. of the S.bdry.of the Reservation
are therefore, S.89°58'W, 157.27 chs.

RESURVEY

In the following Resurvey the northeast corner(No.3) is
reestablished at the point of intersection of the
E.bdry.run on the record bearing from the SE.cor.,
(No.4) with the N.bdry. run on the record bearing
from the NW.cor.(No.2) of the Reservation.

Begin at the southwest corner(No.1) of the Whipple Barra-
cks Military Reservation which is marked by
fragments of sewer pipe and concrete partly
buried in the ground alongside of corner post
in high iron fence line extending along a part
of the S. and W. bdry's of the Reservation. This
cor.being in a dilapidated condition,
reconstruct it as follows:

Remove the broken tile and concrete and in the same
place, Set an iron post 3 ft. long, 3 ins. in
diam. with pieces of broken tile, 26 ins. in the
ground for southwest cor.(No.1), of the
Whipple Barracks Military Reservation, marked on
brass cap



1927

From this cor.the orig.cor. of secs.3,4,33, and 34 on the
S.bdry. of T14N.,R2W.at the intersection of
Gurley and Pleasant Streets in the City of
Prescott Arizona, hereinafter described, bears
S62°46'W.46.57 chs. dist.

Thence
N 41°50'W., on true line, on West bdy. (line 1-2) of the
Reservation.

Over rolling stony land slopes NW.along S.side of iron
Reservation fence line.

2.01 The NE. cor. of frame house 32 X 70 ft. bears S.12 lks.
dist.

2.48 The NW. cor. of same house bears S.22 lks. dist.

2.54 End of iron fence line on E.edge of paved road.

3.05 Center of paved road at gate in fence line; road bears
N32°25'E.to Veterans Hospital and S32°25'W.to
Prescott Arizona.

3.46 South end of wire fence bears N41°50'W.

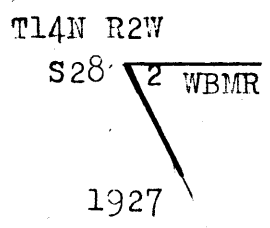
Resurvey of the boundaries of the Whipple Barracks Military Reservation.

Chains	
	Descend 52 ft. over NW. slope.
9.37	Ravine 5 lks. wide course NE.
	Ascend 12 ft. over SE. slope.
10.43	Wire fence at top of ascent on spur bears N.; fence bears S.
15.00	Descend 24 ft. over NW. slope.
16.75	Ravine course NE.
	Ascend 23 ft. over SE. slope.
25.00	Top of spur bears N70°E.
	Descend 104 ft. over NW. slope.
33.26	North end of wire fence, bears E.
33.60	Road to Prescott Arizona bears NE. and SW.
35.14	Center of Santa Fe, Prescott, and Phoenix RR. (single track) bears NE. and SW.
37.50	Wash 4 lks. wide course N.
38.00	Old road bears NE. and SW.
45.20	South branch of Granite Creek (dry) 20 lks. wide course N80°E.
49.28	North branch of Granite Creek contains stream clear water 4 lks. wide 3 ins. deep, course E.
	Ascend over S. slope.
53.60	Old road along Granite Creek bears E. and W.
53.77	Electric power line bears E. and W.
54.27	(Record dist.) Diligent search in this vicinity fails to reveal any trace of the orig. closing cor. of secs. 33 and 34.
	Enter scattering oak and pine timber and undergrowth bears NW. and E.
	Ascend 73 ft. over SW. slope, over stony mountainous land.
58.30	Top of ascent on SW. slope of spur.
	Descend 13 ft. over NW. slope.
62.38	Point of intersection of subdivision line bet. secs. 33 and 34.; Closing cor. of said secs. reestablished at this point as hereinafter described.
63.08	Ravine 5 lks. wide course SW.
	Ascend 68 ft. over SE. slope.
70.47	The door of Indian church house 12x20 ft. bears S45°W. 80 lks. dist.
71.10	Road bears N to Indian village and S. to Prescott Arizona.
74.50	Wash 6 lks. wide 2 ft. deep, course SW.
75.06	(Record dist.) Diligent search in this vicinity fails to reveal any trace of the orig. closing cor. of secs. 28 and 33.
75.10	Telephone line bears N. and S.
76.93	Point of intersection of subdivision line bet. secs. 28 and 33. Closing cor. of said secs. reestablished at this point as hereinafter described.
82.96	Top of rocky spur bears SW.
84.91	Wire fence bears N. and S.
98.72	Wire fence 30 lks. S. of cor. bears N. and S.
	Descend 71 ft. over W. slope.
99.69	Wire fence 20 lks. W. of cor. bears E. and W.
100.00	Wire fence bears NW. and SE. along Reservation boundary
	Intersect boundary line monument, which is a mound of stone 5 ft. base 2 ft. high, No trace of the old boundary post.
106.35	Wire fence along Reservation boundary bears NW. and SE. 6.00 chs. to cor.
109.00	Leave timber bears NE. and SW.
113.60	Sand wash 10 lks. wide course S.
116.10	Sand wash 8 lks. wide 3 ft. deep course S.
118.55	W. end of wire fence bears S.
	Ascend 35 ft. over SE. slope.
125.00	Top of low hill bears N. and S. thence over rolling land along top of hill
125.42	Intersect line post, which is a pine post 3-ins. sq. 4 ft. long set in a mound of stone, marked U.S.M.R. on W. face. Descend.
129.60	Dim road bears N. and S.
130.20	Wire fence bears N. 20 lks. to cor. and S.
137.90	Sand wash 8 lks. wide 3 ft. deep course S.

Resurvey of the boundaries of the Whipple Barracks Military Reservation

Chains

141.90 Wire fence bears NW. and SE.along Reservation line.
145.44 Intersect the NW.cor.,No.2 of the Reservation,which is
a 10 in.drain tile set full length in the ground
and filled with cement,marked on surface of the
cement core (+) U.S.M.R.NWC. witnessed by a mound
of stone around the cor.Reconstruct this cor.
as follows;
Alongside of old cor. Set an iron post 3 ft. long 3 ins.
in diam.27 ins. in the ground for northwest
cor.(No.2) of the Whipple Barracks Military
Reservation.,marked on brass cap



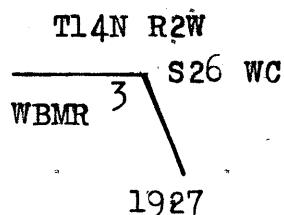
Raise a mound of stone 2 ft. base,1½ ft. high SE. of cor.

Note : When making the excavation for the iron post at this
place the decayed end of a wood post about
3 ins. sq. and 4 ins. long was unearthed at a
depth of 18 ins.

East, on true line, on N.bdy. (line 2-3). of the Reservation.
Over rolling sandy land along S. side of wire fence.
2.60 Sand wash 5 lks. wide course S.; Ascend 23 ft. over W. slope
2.70 Enter scrub oak timber and brush undergrowth, bears N. and
S.
6.65 Top of low spur bears S.
Descend over E. slope.
11.35 Sand wash course S10°W.
14.50 South end of wire fence bears N20°E. 2.00 chs. dist, thence
N.
17.85 Sand wash 8 lks. wide course S.
20.85 Sand wash 10 lks. wide course S.
28.05 Old windmill and pump bears N. 2.00 chs. dist.
30.35 Brick foundation walls of burned house bears N. 75 lks.
dist.
Descend 22 ft. over SE. slope
31.85 Sand wash 20 lks. wide course S.; Leave rolling sandy land
bears N. and S. and enter rolling mountainous
land.
Ascend 206 ft. over SW. slope.
52.00 Top of ridge bears NW. and SE.
Descend 23 ft. over NE. slope.
52.98 North end of wire fence bears S10°E. 2.00 chs. thence
S20°W.
55.95 Ravine course N. Old road in ravine bears N. and S.
56.90 Telephone line bears N22½°E. and South.
59.54 Point of intersection of subdivision line bet. secs. 27
and 28, T14N., R.2W.; Closing corner of said secs.
reestablished at this point as hereinafter des-
cribed.
Ascend over W. slope 27 ft.
60.57 (Record dist.) Diligent search in this vicinity fails to
reveal any trace of the orig. closing cor. of
secs. 27 and 28.
65.15 Top of ridge bears N. and S. Intersect line post, which
is a pine post 3 ins. sq. 4 ft. long, loosely set
in a mound of stone, marked U.S.M.R on N. face.
Descend 40 ft. over E. slope.

Resurvey of the boundaries of the Whipple Barracks Military Reservation

Chains	
69.92	Draw course N. Ascend 12 ft. over W. slope.
81.05	Top of rocky spur bears N. continue ascent along N. slope.
86.55	Top of spur bears N10°E. Descend 52 ft. over E. slope.
89.58	Ravine 4 lks. wide course N20°E. Ascend 37 ft. over NW. slope.
94.40	Top of rocky spur bears N. Descend 39 ft. over E. slope.
96.40	SW. cor. of wire fence bears E. and N.
97.36	Old Electric power line from Prescott Arizona to Del Rio bears N11°E. and S11°W.
99.25	Ravine course N. Ascend 47 ft. over W. slope.
103.55	Top of ridge bears N10°E. and S10°W. Descend 79 ft. over SE. slope.
110.60	Ravine course N10°E. Ascend 55 ft. over NW. slope.
117.55	Top of ridge bears N20°E. and S20°W. Descend 75 ft.
128.00	Top of spur 52 ft. below ridge bears SE.
138.83	Point of intersection of subdivision line bet. secs. 26 and 27, T14N., R2W., Closing cor. of said secs. reestablished at this point as hereinafter described.
139.55	Wire fence bears NW. and SE.
140.00	Point of spur on granite boulder 10 ft. high Descend 75 ft. over steep rocky E. slope
140.57	(Record dist.) Diligent search in this vicinity fails to reveal any trace of the orig. closing cor. of secs. 26 and 27. End of wire fence line bears E. Cor of wire fence turns N35°E.
150.66	Electric Power transmission line bears N15°E. and S15°W.
151.30	U.S. Highway No. 89 from Phoenix to Ash Fork Arizona, bears
153.30	N20°E. and S20°W.
154.41	Set an iron post 3 ft. long 3 ins. in diam. with marked stone 27 ins. in the ground for witness cor. to the reestablished NE. cor. (No. 3) of the Whipple Barracks Military Reservation, marked on brass cap



156.45	Left bank of Granite Creek containing stream of clear water 10 lks. wide 4 ins. deep.
157.41	Intersect East bdy. of the Reservation, and true point for the reestablishment of the northeast cor. (No. 3) of reservation. This point falls in the bed of Granite Creek, where prevailing floods would destroy the cor. therefore drive a steel bar 1 in. in diam. 4 ft. long full length in the ground at exact cor. point and at 3.00 chs. West establish witness cor. as hereinbefore described.

From the true point for reestablished NE. cor. (No. 3)
of the Reservation,
S41°43'50"E. (record course) on true line, on East bdy.
(line 3-4) of the Reservation.
Over gravelly bed of Granite Creek.

Resurvey of the boundaries of the Whipple Barracks Military Reservation.

Chains	
2.00	Right bank of Granite Creek 4 ft. high, thence
8.10	Over rolling sandy land, thru scattering undergrowth
13.00	Old road bears NE. and SW.
13.75	Wire fence bears NE. and SW.
	Center of Santa Fe, Prescott and Phoenix R. R. (single
	track) bears NE. and SW.
	Ascend 147 ft. over NW. slope over hilly land.
14.50	Wire fence bears NE. and SW.
23.15	Top of spur bears NW. Descend 26 ft. over SE. slope
32.36	Wash course S. Ascend 15 ft. over W. slope.
33.06	Point of spur slopes SW. Descend 15 ft.
36.45	Wash, course SW. Leave hilly land bears NW. and SE.
	Enter rolling land.
45.79	State Highway (Black Canyon Road) from Prescott to
	Phoenix bears N. 70° W. and S. 70° E.
	Descend 18 ft. over steep SE. slope.
47.04	Wire fence bears N. 80° W., and S. 80° E.
50.53	Rocky wash 20 lks. wide, course N. 80° W.
	Enter scattering timber bears NW. and SE.
	Ascend 122 ft. over NE. slope, over stony hilly land.
54.34	Road to Prescott, Arizona, bears E. and W.
57.20	Point of intersection of subdivision line bet. secs. 26
	and 35. Closing cor. of said secs. established at
	this point as hereinafter described.
64.66	Wire fence bears N. and S.
67.67	Rocky ravine 46 ft. deep course N. Ascend.
74.69	Wire fence bears N. 15° E., and S. 15° W.
78.90	Point of intersection of subdivision line bet. secs. 35
	and 36, T. 14 N., R. 2 W. Closing cor. of said
	secs. established at this point as hereinafter
	described.
81.15	Intersect W. end line (2-3) of "LINNA" pat. lode mining
	claim, Min. Sur. No. 1364A, at a point 3.94 chs. S.
	$19^{\circ} 30'$ E., from Cor. No. 2 thereof.
	Thence across said claim.
81.90	Top of quartz ledge 5 ft. high on top of spur bears NE.
	Descend 16 ft. over SE. slope.
85.09	Ravine 6 lks. wide course N. 20° E. Leave hilly land
	bears NE. and SW.
	Ascend 127 ft. over NW. slope. Over rolling and moun-
	tainous land, thru dense undergrowth.
86.79	Intersect S. side line (3-4) of "LINNA" pat. lode mining
	claim at a point 2.16 chs. N. $75^{\circ} 47'$ E., from Cor.
	No. 3 thereof. Leave said claim.
95.79	Old road to Prescott, Arizona, bears N. 75° E., and S. 75° W.
103.84	Top of spur, bears N. Descend 30 ft. over E. slope.
108.32	Telephone line to Prescott, Arizona, bears NE. and SW.
108.94	Ravine, course NE. Ascend 23 ft. over NW. slope.
112.34	Top of spur bears N. Descend 4 ft. over E. slope
114.39	Ravine 5 lks. wide, course N.
	Ascend 115 ft. over W. slope.
122.82	Intersect boundary line monument which is a pine post
	3 ins. sq., 4 ft. long, set in a mound of stone on
	top of spur bears NE., marked USMR. on N., E., S.
	and W. faces.
	Descend 96 ft. over SE. slope.
128.20	Wash, 10 lks. wide, course NE.
	Ascend 52 ft. over NW. slope.
140.14	Top of spur bears NE. Descend 26 ft. over SE. slope.
143.04	Wire fence bears N. and S.
145.34	Intersect the old SE. cor. (No. 4) of the Reservation,
	which is a drain tile pipe 10 ins. in diam., set
	full length in the ground, filled with concrete.
	Top of monument broken. Reconstruct this cor. as
	follows:

Resurvey of the boundaries of the Whipple Barracks Military Reservation.

Chains	Alongside of the old cor., set an iron post 3 ft. long, 3 ins. in diam., with marked stone at the base 24 ins. in the ground to bed rock, supported in a mound of stone for SE. cor. (No. 4) of the Whipple Barracks Military Reservation, marked on brass cap
	S. 89° 58' W., on true line, on S. bdry., (line 4-1) of the Reservation.
	Over mountainous land, thru dense undergrowth. Ascend 200 ft. over SE. slope.
1.51	Wire fence bears N. and S.
13.57	Top of ascent on N. slope of spur.
	Descend 142 ft. over steep NW. slope.
25.08	Ravine 10 lks. wide course N.
	Ascend 200 ft. over E. slope.
34.77	Top of spur bears N.
	Intersect boundary line monument, which is a pine post 3 ins. sq. 4 ft. long, set loosely in a mound of stone, marked USMR on S. face.
	Descend 392 ft. over steep W. slope.
41.20	Point of intersection of subdivision line bet. secs. 35 and 36; T. 14 N., R. 2 W. Closing cor. of said secs. established at this point as hereinafter described.
46.50	Ravine 8 lks. wide course NW., at foot of steep descent. Leave rough mountainous land bears N. and S., enter hilly land.
51.45	Cor. of wire fence bears S. and W., thence along S. side of fence line.
52.67	Wire fence bears E. and S. 80° W.
54.87	Wash 4 lks. wide, course N.
58.66	Same wire fence bears N. 70° W., and S. 70° E., in ravine course N.
59.85	Wire fence 20 lks. S. of cor. bears N. and S.
69.27	Old road to Prescott, Arizona, bears N. 10° E., and S. 70° W.
70.07	Wash, 6 lks. wide, course S.
79.75	Wire fence 20 lks. S. of cor. bears N. 20° E., and S. 20° W.
81.66	Telephone line to Prescott, Arizona, bears NE. and SW.
83.57	Same wash 6 lks. wide 6 ft. deep, course N.
85.17	Wash 8 lks. wide, course NE. Leave hilly land bears NE. and SW.
	Ascend 175 ft. over SE. slope. Over stony mountainous land.
96.27	Top of ridge bears N. and S.
	Descend 210 ft. over steep W. slope.
96.51	A point 20 lks. S. of cor. of wire fence line bears NW., and E. from cor.
108.17	Wash 4 lks. wide 10 ft. deep, course NW.
118.82	Wire fence bears NW. and SE.
119.60	Point of intersection of subdivision line bet. secs. 34 and 35, T. 14 N., R. 2 W. Closing cor. of said secs. established at this point as hereinafter described.
119.82	Wash, 4 lks. wide, 2 ft. deep, course N. 30° W.
120.03	Wire fence 25 lks. S. of cor. bears N. and S.
122.77	Top of spur, bears N. Descend 52 ft. over steep W. slope
125.07	Road bears N. and SE.
127.73	Wash, 30 lks. wide, 24 ft. deep, course N.
	Ascend 24 ft. over steep W. bank of wash.
132.27	Top of ascent on W. bank of wash, leave mountainous land bears N. and S., and enter rolling land.

BOOK 8-9

Resurvey of the boundaries of the Whipple Barracks Military Reservation.

Chains
137.27 Leave undergrowth bears NE. and SW.
138.47 Center of U. S. Highway No. 89, from Phoenix to Ash
Fork, Arizona, bears N. 65° E., and S. 65° W.
145.17 Gulch, 6 ft. deep, course NW.
148.79 Corner of iron (Reservation) fence bears NE. and W.,
thence along the S. side of fence line.
157.27 Intersect the southwest cor. (No. 1) of the Reservation,
the place of beginning, hereinbefore described.
Land, level, rolling, hilly and mountainous.
Soil, sandy, gravelly, and stony, 2nd, 3rd and 4th rate.
Timber, juniper, pinion, pine and oak.
Undergrowth, manzanita and scrub oak.

Boundaries of the Whipple Barracks Military Reservation.

LATITUDES, DEPARTURES AND CLOSING ERRORS.

Line designated	True course	Dist- ance.	Latitudes		Departures	
			N	S	E	W
South boundary	S.89°58' W.	157.27		.09		157.27
West boundary	N.41°50' W.	145.44	108.37			97.00
North boundary	East	157.41			157.41	
East boundary	S.41°43' 50" E.	145.34		108.46	96.74	
Convergency					.05	
Totals			108.37	108.55	254.20	254.27
				108.37		254.20
Error in Latitude			0.18			
Error in Departure			0.07			

Retracement of Part of the South Bdy. of T. 14 N., R. 2 W.

- Chains The south bdy. of T. 14 N., R. 2 W., was surveyed in 1871, by S. W. Foreman, U. S. D. S., who established all cors. thereon with a common reference to areas on both sides of the line.
- No retracement or resurvey of any part of this Tp. bdy. is of record.
- The following notes describe a retracement of the Tp. bdy. between secs. 1 and 36, Ts. 13 and 14 N., R. 2 W.
-
- From orig. cor. of Ts. 13 and 14 N., Rs. 1 and 2 W. West, on random line, bet. secs. 1 and 36 (E. $\frac{1}{2}$).
- 39.98 Fall 486 lks. N. of original $\frac{1}{4}$ sec. cor. of secs. 1 and 36.
- True course and dist. of E. $\frac{1}{2}$ of line bet. secs. 1 and 36 are therefore N. $83^{\circ} 4'$ E., 40.27 chs.
- Thence
- West, on random line, bet. secs. 1 and 36 (W. $\frac{1}{2}$).
- 38.26 Fall 234 lks. N. of orig. cor. of secs. 1, 2, 35 and 36.
- True course and dist. of W. $\frac{1}{2}$ of line bet. secs. 1 and 36 are therefore N. $86^{\circ} 30'$ E., 38.33 chs.
-
- The original cor. of secs. 1, 2, 35 and 36, is a granite stone, 24 x 12 x 8 ins. loosely set in a mound of stone, marked with 1 groove on E. face, and 5 grooves on W. face. No bearing trees or other accessories.
- Reconstruct this cor. monument as follows:
- Remove the mound of stone and in center of its position reset old cor. stone 16 ins. in ground, and alongside same set an iron post, 3 ft. long, 2 ins. in diam., 20 ins. in the ground to bed rock, deposit a stone marked with a cross (X) at base of post, and raise a mound of stone around post, for cor. of secs. 1, 2, 35 and 36, marked on brass cap
- | | |
|--------------|------|
| T 14 N R 2 W | |
| S 35 | S 36 |
| S 2 | S 1 |
| T 13 N | |
| 1927 | |
- No bearing trees available.
- Thence
- N. $86^{\circ} 30'$ E., on true line, bet. secs. 1 and 36 (W. $\frac{1}{2}$).
- Over mountainous land, thru dense undergrowth.
- Ascend 120 ft. over NW. slope.
- 5.58 Top of spur, bears N. Descend 103 ft. over E. slope.
- 10.33 Ravine, course NE. Ascend 65 ft. over NW. slope.
- 20.06 Fence cor. from which barbed wire fence extends N. $86\frac{1}{2}^{\circ}$ E., and SW. At 4 chs. SW. from this point the fence turns to SE.
- 20.08 Top of spur, bears N. Descend 212 ft. over E. slope to
- 30.73 Ravine, course NE. Descend 17 ft. over NE. slope
- 32.58 Ravine, course N. Ascend 21 ft. over NW. slope to
- 38.33 Top of spur, bears N. Intersect the original $\frac{1}{4}$ sec. cor. of secs. 1 and 36, which is a granite stone 8 x 6 x 5 ins. above ground, marked $\frac{1}{4}$ on N. face, firmly set, and surrounded by a mound of stone, on N. side of barbed wire fence bearing N. $88\frac{1}{2}^{\circ}$ E., and S. $88\frac{1}{2}^{\circ}$ W. No bearing trees or other accessories.
- Thence
- N. $83^{\circ} 4'$ E., on true line, bet. secs. 1 and 36 (E. $\frac{1}{2}$).
- Over mountainous land, thru dense undergrowth, along N. side of wire fence, bearing N. $88\frac{1}{2}^{\circ}$ E., and S. $88\frac{1}{2}^{\circ}$ W. Descend 170 ft. over E. slope.
- 0.02 Fence cor. 2 lks. S. of line, from which barbed wire fences extend N. $88\frac{1}{2}^{\circ}$ W., and N. $88\frac{1}{2}^{\circ}$ E.

RETRACEMENT of Part of South Bdy. of T. 14 N., R. 2 W.

Chains	
12.93	Ravine, course NE. Ascend 15 ft. over NW. slope.
15.52	Point of spur, bears N. Descend 36 ft. over NE. slope.
17.40	Ravine, course N. Ascend 143 ft. over W. slope.
22.37	Old trail, brs. N. and S.
29.27	Top of ridge, bears N. 10° E., and S. Leave dense and enter scattering undergrowth. Descend 65 ft. over SE. slope to T. cor.
33.77	Telephone line bears NW. and SE. At 6 chs. SE. of this point the telephone line turns to NE.
40.27	Intersect the original cor. of Ts. 13 and 14 N., Rs. 1 and 2 W., which is a granite stone, 14 x 12, x 10 ins. above ground, marked with 6 grooves on each of E., W., N. and S. faces, and firmly set. No bearing trees or other accessories.
	This T. cor. is set alongside a fence cor. from which fence extends E. and S.
	Land, mountainous.
	Soil, rocky, 4th rate.
	Timber, none.
	Undergrowth, scrub oak.

Resurvey of Part of South Bdy. of T. 14 N., R. 2 W.

Chains The South Bdy. of T. 14 N., R. 2 W., was surveyed in 1871 by S. W. Foreman, U. S. D. S., establishing all cors. thereon with a common reference to areas on both sides of the line.

No retracement or resurvey of any part of this Tp. bdy. is of record.

The following notes describe a resurvey of the T. bdy. bet. secs. 2 and 35, and bet. secs. 3 and 34, Ts. 13 and 14 N., R. 2 W.

Retracement for Resurvey.

From orig. cor. of secs. 1, 2, 35 and 36. West, on random line, searching at record intervals for the original cor. monuments.

Find no trace of any cor. until at

158.59 Fall 115 lks. N. of point of original location of the cor. of secs. 3, 4, 33 and 34, determined as hereinafter described.

The true course and dist. of T. bdy. S. of secs. 34 and 35 are therefore N. $89^{\circ} 35'$ E., 158.60 chs., which, to maintain original proportion between cor. intervals, gives four intervals of 39.65 chs. each for the reestablishment of the missing cors.

R E S U R V E Y.

The point of original location of the cor. of secs. 3, 4, 33 and 34 is at the intersection of the West property line of Pleasant Street, with the center line of Gurley Street, in the City of Prescott, Arizona. The original cor. monument is now buried several feet below the surface of the street pavement.

Reestablish the cor. monument from the record kept of the original location, in the Office of the City Engineer of Prescott, as follows:

At 51 ft. S. $79^{\circ} 20'$ W., from an iron pin, 1 in. in diam., set at the intersection of the center lines of Gurley and Pleasant Streets, drill a hole in pavement, 5 ins. deep, and cement a bronze tablet therein, for reestablished cor. of secs. 3, 4, 33 and 34, marked on top

T 14 N R 2 W	
S 33	S 34
S 4	S 3
T 13 N	
1927	

Thence

N. $89^{\circ} 35'$ E., on true line, bet. secs. 3 and 34. Along center of pavement of Gurley Street, Prescott, Arizona.

24.80 U. S. Highway No. 89, from Phoenix to Ash Fork, Ariz., bears NE. from its junction with Gurley St., at this point. Leave Gurley St.

Enter rolling land, scattering timber and undergrowth. Ascend gradually over NW. slope.

39.65 (Proportional dist.) Point for reestablishment of the $\frac{1}{4}$ sec. cor. of secs. 3 and 34. No monument set at this point.

40.70 Wash, 5 lks. wide, 10 ft. deep, course NW.

41.50 Old road bears NW. and SE.

50.39 Electric power transmission line, bears N. $25\frac{1}{2}^{\circ}$ W., and S. $25\frac{1}{2}^{\circ}$ E.

Resurvey of Part of South Bdy. of T. 14 N., R. 2 W.

- Chains
- 55.35 Road, bears N. 30° W., and S. 30° E.
 - 57.80 Wash, course N. Enter mountainous land. Ascend 93 ft. over NW. slope.
 - 64.80 Top of spur, bears N. Descend 47 ft. over NE. slope to
 - 74.30 Top of bank, bears N. and S. Descend 58 ft. over E. slope.
 - 77.30 Wash, 50 lks. wide, course N. Enter nearly level bottom land.
 - 78.55 Road, bears N. and S. 10° E.
 - 78.90 Wire fence, bears N. and S.
 - 79.30 (Proportionate dist.) Set an iron post, 3 ft. long, 2 ins. in diam., 27 ins. in the ground, for reestablished cor. of secs. 2, 3, 34 and 35, marked on brass cap

T 14 N R 2 W
S 34 | S 35
S 3 | S 2
T 13 N
1927

No bearing trees available.
Raise a mound of stone, 2 ft. base, 1½ ft. high W. of cor.
Land, rolling, mountainous and nearly level.
Soil, gravelly and rocky, 3rd and 4th rate.
Timber, oak.
Undergrowth, scrub oak.

-
- N. 89° 35' E., on true line, bet. secs. 2 and 35.
Over nearly level bottom land, thru scattering timber and undergrowth.
- 0.15 A point on line at foot of steep W. slope, bearing N. and S., from which a pump and well bears South 10 lks. dist. Leave nearly level bottom land, and enter mountainous land.
 - 19.30 Ascend 257 ft. over steep rocky W. slope. Top of spur, bears N. 20° W. Descend 155 ft. over E. slope.
 - 29.65 Bottom of ravine, course N. Ascend 79 ft. over W. slope.
 - 32.39 Wire fence, bears N. 30° W., and S. 30° E. Fence cor. bears S. 30 lks. dist., from which fence extends E. and N. 30° W.
 - 39.65 (Proportional dist.) Point for reestablishment of the ¼ sec. cor. of secs. 2 and 35. No monument set at this point.
 - 40.00 Fence cor. from which wire fence extends S. and S. 88° W.
 - 42.80 Top of spur, bears N. Descend 16 ft. over NE. slope.
 - 46.14 Bottom of ravine, course N. 10° W. Ascend 154 ft. over SW. slope.
 - 47.80 Top of spur, bears N. 20° W. Descend 20 ft. over E. slope
 - 50.10 Bottom of ravine, course N. Ascend 23 ft. over W. slope.
 - 50.55 Point of spur, bears N. Descend 5 ft. over NE. slope.
 - 51.38 Bottom of ravine, course N. Ascend 101 ft. over W. slope.
 - 58.30 Top of spur, bears N. Descend 27 ft. over E. slope.
 - 61.40 Bottom of ravine, course N. The east end of a wire fence bears N. 30 lks. dist. from this point. Ascend 27 ft. over W. slope.
 - 64.30 Top of spur, bears N. Descend 12 ft. over E. slope.
 - 67.67 Bottom of ravine, course N. Enter dense undergrowth. Ascend 160 ft. over W. slope to
 - 75.80 Point of spur sloping NW. Ascend 51 ft. over N. slope to
 - 79.30 Intersect the original cor. of secs. 1, 2, 35 and 36, reconstructed as hereinbefore described.

Resurvey of Part of South Bdy. of T. 14 N., R. 2 W.

Chains	Land, nearly level at W. end of mile, remainder mountainous. Soil, gravelly and rocky, 3rd and 4th rate. Timber, oak. Undergrowth, scrub oak.
--------	--

3869

Resurvey of Part of the East Boundary of
Township 14 North, Range 2 West.

Chains	<p>The east boundary of Township 14 North, Range 2 West was surveyed in 1871 by S. W. Foreman, U. S. D. S., establishing all corners thereon with a common reference to areas on both sides of the line, and establishing a Tp. cor. at each end of the line, both with a four-township reference.</p> <p>The south one mile of this T. bdy. was retraced in 1923 by J. W. Waara, U. S. Mineral Surveyor in connection with the amended survey in Sec. 31, T. 14 N., R. 1 W., of the "Boulder" lode mining claim, Mineral Survey No. 1194.</p> <p>The north three and one half miles of this T. bdy. were retraced, and the cor. of Ts. 14 and 15 N., Rs. 1 and 2 W., the cor. of secs. 1, 6, 7 and 12, the $\frac{1}{4}$ sec. cor. of secs. 19 and 24, and the cor. of secs. 25, 30, 31 and 36, reconstructed by G. F. Sawyer, U. S. S. in 1926, in connection with a segregation survey of certain mineral locations in secs. 20 and 29, T. 14 N., R. 1 W., executed under instructions for Group No. 136, Ariz. In the record by Surveyor Sawyer, of said retracement, all cors. except those reconstructed, were reported as missing.</p> <p>No other retracement, and no resurvey of any portion of this Tp. bdy. is of record.</p> <p>The following notes describe a resurvey of the south one mile of the Tp. bdy.</p> <p style="text-align: center;">- - - - - Retracement for Resurvey. - - - - -</p> <p>From original cor. of secs. 25, 30, 31 and 36, T. 14 N., Rs. 1 and 2 W., south, on random line, bet. secs. 31 and 36.</p> <tr><td>40.00</td><td>Diligent search in this vicinity fails to reveal any trace of the original $\frac{1}{4}$ sec. cor. Set temp. $\frac{1}{4}$ sec. cor. Continue line and measurement.</td></tr> <tr><td>79.52</td><td>Fall 103 lks. E. of the original cor. of Ts. 13 and 14 N., Rs. 1 and 2 W., hereinbefore described. True course and dist. of Tp. bdy. bet. secs. 31 and 36, are therefore, N. 0° 45' E., 79.52 chs.</td></tr> <tr><td></td><td style="text-align: center;">- - - Resurvey - - -</td></tr> <tr><td></td><td>From original cor. of Ts. 13 and 14 N., Rs. 1 and 2 W., hereinbefore described, N. 0° 45' E., on true line, bet. secs. 31 and 36. Over rolling and mountainous land, thru dense undergrowth Ascend 80 ft. over SE. slope.</td></tr> <tr><td>17.50</td><td>Top of ridge, bears NE. and SW. Descend 195 ft. over NW. slope.</td></tr> <tr><td>25.12</td><td>Dim road bears NW. and SE.</td></tr> <tr><td>31.75</td><td>Head of ravine, course NW. Descend gradually over W. slope to</td></tr> <tr><td>39.76</td><td>(Midpoint) Set an iron post, 3 ft. long, 1 in. in diam., 26 ins. in the ground, for reestablished $\frac{1}{4}$ sec. cor. of secs. 31 and 36, mkd. on brass cap</td></tr> <tr><td></td><td style="text-align: center;">$\frac{1}{4}$ S 36 S 31 1927</td></tr> <tr><td></td><td>No bearing trees available. Raise a md. of stone, 2 ft. base, 1½ ft. high, W. of cor. Descend gradually over W. slope.</td></tr> <tr><td>44.10</td><td>Point of spur, bears NW. Descend 73 ft. over N. slope.</td></tr>	40.00	Diligent search in this vicinity fails to reveal any trace of the original $\frac{1}{4}$ sec. cor. Set temp. $\frac{1}{4}$ sec. cor. Continue line and measurement.	79.52	Fall 103 lks. E. of the original cor. of Ts. 13 and 14 N., Rs. 1 and 2 W., hereinbefore described. True course and dist. of Tp. bdy. bet. secs. 31 and 36, are therefore, N. 0° 45' E., 79.52 chs.		- - - Resurvey - - -		From original cor. of Ts. 13 and 14 N., Rs. 1 and 2 W., hereinbefore described, N. 0° 45' E., on true line, bet. secs. 31 and 36. Over rolling and mountainous land, thru dense undergrowth Ascend 80 ft. over SE. slope.	17.50	Top of ridge, bears NE. and SW. Descend 195 ft. over NW. slope.	25.12	Dim road bears NW. and SE.	31.75	Head of ravine, course NW. Descend gradually over W. slope to	39.76	(Midpoint) Set an iron post, 3 ft. long, 1 in. in diam., 26 ins. in the ground, for reestablished $\frac{1}{4}$ sec. cor. of secs. 31 and 36, mkd. on brass cap		$\frac{1}{4}$ S 36 S 31 1927		No bearing trees available. Raise a md. of stone, 2 ft. base, 1½ ft. high, W. of cor. Descend gradually over W. slope.	44.10	Point of spur, bears NW. Descend 73 ft. over N. slope.
40.00	Diligent search in this vicinity fails to reveal any trace of the original $\frac{1}{4}$ sec. cor. Set temp. $\frac{1}{4}$ sec. cor. Continue line and measurement.																						
79.52	Fall 103 lks. E. of the original cor. of Ts. 13 and 14 N., Rs. 1 and 2 W., hereinbefore described. True course and dist. of Tp. bdy. bet. secs. 31 and 36, are therefore, N. 0° 45' E., 79.52 chs.																						
	- - - Resurvey - - -																						
	From original cor. of Ts. 13 and 14 N., Rs. 1 and 2 W., hereinbefore described, N. 0° 45' E., on true line, bet. secs. 31 and 36. Over rolling and mountainous land, thru dense undergrowth Ascend 80 ft. over SE. slope.																						
17.50	Top of ridge, bears NE. and SW. Descend 195 ft. over NW. slope.																						
25.12	Dim road bears NW. and SE.																						
31.75	Head of ravine, course NW. Descend gradually over W. slope to																						
39.76	(Midpoint) Set an iron post, 3 ft. long, 1 in. in diam., 26 ins. in the ground, for reestablished $\frac{1}{4}$ sec. cor. of secs. 31 and 36, mkd. on brass cap																						
	$\frac{1}{4}$ S 36 S 31 1927																						
	No bearing trees available. Raise a md. of stone, 2 ft. base, 1½ ft. high, W. of cor. Descend gradually over W. slope.																						
44.10	Point of spur, bears NW. Descend 73 ft. over N. slope.																						

Resurvey of Part of the East Boundary of
Township 14 North, Range 2 West.

Chains

47.86 Old road bears NW. and SE.
 50.50 Bottom of ravine, course West. Ascend 35 ft. over S.
 slope.
 56.55 Top of spur, bears W. Descend 28 ft. over NW. slope.
 63.00 Bottom of ravine, course SW. Ascend 140 ft. over S.
 slope.
 67.92 State highway (Black Canyon Road) Prescott to Phoenix,
 bears NW. and SE.
 68.92 Wire fence, bears E. and W.
 70.47 Wire fence, bears NW. and SE.
 74.00 Top of ridge bears E. and W.
 Descend 80 ft. over NW. slope to
 79.52 Intersect the original cor. of secs. 25, 30, 31 and 36,
 reconstructed in 1926, which is an iron post, 2 ins.
 in diam. projecting 22 ins. above ground, firmly set
 in ground and mound of stone and properly marked on
 brass cap. The original cor. monument, a malpais
 stone marked with 1 notch on S. face and 5 notches
 on N. face, is firmly set in the ground alongside
 the iron post. The original bearing tree, a cedar
 18 ins. in diam., mkd. T XIII N R I W S XXX BT bears
 N. $1\frac{1}{2}^{\circ}$ E., 67 lks. dist.
 Land, rolling and mountainous.
 Soil, gravelly, 2nd and 3rd rate.
 Timber, none.
 Undergrowth, scrub oak and manzanita.

Retracement of Boundaries of "Linna" and "Clara" patented lode mining claims, Mineral Survey No. 1364A, in Sec. 36, Township 14 North, Range 2 West.

Chains	<p>The "Linna" and "Clara" lode mining claims, of Min. Sur. No. 1364A, in Sec. 36, T. 14 N., R. 2 W., Walker Mining District, Yavapai County, Arizona, were surveyed by J. J. Fisher, U. S. Deputy Mineral Surveyor in May, 1899, and were patented August 2, 1901.</p> <p>No retracement or resurvey of the bdrs. of either of these claims is of record.</p> <p>The following notes describe a complete retracement of the bdrs. of both of said claims:</p> <p style="text-align: center;">-----</p> <p style="text-align: center;">T I E.</p> <p style="text-align: center;">-----</p> <p>From Cor. No. 1 of the "Linna" identical with Cor. No. 1 of the "Clara", the cor. of secs. 25, 26, 35 and 36, T. 14 N., R. 2 W., bears N. $59^{\circ}00\frac{1}{2}'$ W., 19.75 chs. dist.</p> <p style="text-align: center;">-----</p> <p style="text-align: center;">Retracement of "LINNA" Claim.</p> <p style="text-align: center;">-----</p> <p>Cor. No. 1 of the "Linna" claim is a granite stone 6 x 8, 12 ins. above ground; firmly set. The top of this stone is broken off, and there is no trace of the fragment. The remaining portion is unmarked, but is witnessed by a rock, 18 x 36, 36 ins. above ground, mkd. with a cross (X) B R, L No. 1, 1364A, bearing N. $65^{\circ}10'$ E., 350 lks. dist.</p> <p>From above described Cor. No. 1.</p> <p>S. $75^{\circ}45'$ W., on random line, on N. side line (1-2) of claim.</p> <p>Over rolling land thru dense undergrowth.</p> <p>3.77 Wire fence, bears N. and S.</p> <p>6.27 Old road, bears NW. and SE.</p> <p>9.00 Top of low spur, bears NW.</p> <p>10.65 Rayine, course NW.</p> <p>13.07 Wire fence, bears N. and S.</p> <p>16.27 Fall 3 lks. S. $14\frac{1}{4}^{\circ}$ E., from Cor. No. 2, which is a stone 6 x 10, x 12 ins. above ground, firmly set in ground and mound of stone, mkd. L No. 2 1364 A.</p> <p>True course and dist. of N. side line (1-2) of "Linna" patented lode mining claim are, therefore, S. $75^{\circ}51'$ W., 16.27 chs.</p> <p>Thence S. $19^{\circ}30'$ E., on random line, on W. end line (2-3) of claim.</p> <p>Over rolling land, thru dense undergrowth.</p> <p>3.94 Intersect the East bdy. of Whipple Barracks Military Reservation (line 3-4) at a point 2.25 chs. S. $41^{\circ}43'50''$ E., from the closing cor. of secs. 35 and 36, thereon, hereinafter described.</p> <p>Thence across reservation, continuing line and measurement.</p> <p>8.97 Intersect Cor. No. 3 of the "Linna" claim which is a granite stone 6 x 12, x 18 ins. above ground, firmly set, mkd. L No 3, 1364A, and witnessed by a md. of stone W. of cor.</p> <p>True course and dist. of W. end line (2-3) of "Linna" patented lode mining claim are, therefore, S. $19^{\circ}30'$ E., 8.97 chs.</p> <p>Thence</p> <p>N. $75^{\circ}45'$ E., on random line, on S. side line (3-4) of claim, within the Whipple Barracks Military Reservation.</p> <p>Over rolling land, thru dense undergrowth.</p> <p>2.16 Intersect the East Bdy. of Whipple Barracks Military Re-</p>
--------	--

Retracement of Boundaries of "Linna" and "Clara" patented lode
Mining Claims, Mineral Survey No. 1364A, in Sec. 36,
Township 14 North, Range 2 West.

Chains	<p>servation (line 3-4) at a point 7.89 chs. S. 41° 43' 50" E., from the closing cor. of secs. 35 and 36 thereon, hereinafter described.</p> <p>Leave reservation and continue line and measurement.</p> <p>7.89 Wire fence, bears NW. and SE.</p> <p>10.79 Ravine, course NW.</p> <p>12.79 Old road, bears NW. and SE.</p> <p>16.29 Fall 1 lk. N. 14½° W., from Cor. No. 4 of the "Linna" claim, identical with Cor. No. 4 of the "Clara" claim, which is a granite stone 6 x 12, x 16 ins. above ground, mkd. L No. 4 1364A, firmly set in ground and mound of stone.</p> <p>The true course and dist. of S. side line (3-4) of "Linna" patented lode mining claim are, therefore, N. 75° 47' E., 16.29 chs.</p> <p>Thence</p> <p>N. 19° 30' W., on random line, on E. end line (4-1) of the "Linna" claim, identical with W. end line (4-1) of the "Clara" claim.</p> <p>Over rolling land, thru dense undergrowth.</p> <p>4.53 Intersect a mound of stone.</p> <p>9.01 Intersect Cor. No. 1 of the "Linna" identical with Cor. No. 1 of the "Clara" hereinbefore described.</p> <p>The true course and dist. of the E. end line (4-1) of the "Linna" and of the W. end line (4-1) of the "Clara" are therefore N. 19° 30' W., 9.01 chs.</p> <p>-----</p> <p>Total Area of "Linna" claim - - - - - 14.58 acres</p> <p>Area of "Linna" in conflict with Whipple Barracks M. R. - - - - - 0.54 "</p> <p>Area of "Linna" in Sec. 36 - - - - - 14.04 "</p> <p>-----</p> <p>Retracement of "Clara" claim.</p> <p>-----</p> <p>From Cor. No. 1 of "Clara" identical with Cor. No. 1 of "Linna", hereinbefore described.</p> <p>N. 70° 30' E., on random line on N. side line (1-2) of "Clara" claim.</p> <p>Over mountainous land, thru dense undergrowth.</p> <p>Desc. 20 ft. over NE. slope.</p> <p>2.35 Ravine, course NW., and road bearing NW. and SE.</p> <p>Ascend 210 ft. over SW. slope.</p> <p>11.94 State highway (Black Canyon Road) bears NW. and SE.</p> <p>16.19 Wire fence, bears NW. and SE.</p> <p>21.10 Top of ridge, brs. NW. and SE.</p> <p>22.34 Fall 13 lks. S. 19½° E., from Cor. No. 2, which is a granite stone 6 x 8, x 8 ins. above ground, mkd. C No. 2 1364A, firmly set in ground.</p> <p>The true course and dist. of N. side line (1-2) of "Clara" patented lode mining claim are therefore, N. 70° 10' E., 22.34 chs.</p> <p>Thence,</p> <p>S. 19° 30' E., on random line, on E. end line (2-3) of "Clara" claim.</p> <p>Over mountainous land, thru dense undergrowth. Descend 40 ft. over NE. slope of ridge, bearing NW. and SE.</p> <p>6.36 Wire fence, bears NW. and SE.</p> <p>9.06 Fall 1 lk. S. 70½° W., from Cor. No. 3, which is a granite stone 10 x 16, x 14 ins. above ground, mkd. C No. 3 1364A, firmly set in ground and mound of stone.</p> <p>The true course and dist. of E. end line (2-3) of "Clara" pat. lode mining claim, are, therefore, S. 19° 35' E., 9.06 chs.</p>
--------	---

BOOK 3869

Retracement of Boundaries of "Linna" and "Clara" patented lode Mining Claims, Mineral Survey No. 1364A, in Sec. 36, Township 14 North, Range 2 West.

Chains	Thence, S. 70° 30' W., on random line, on S. side line (3-4) of "Clara" claim. Over mountainous land, thru dense undergrowth. Descend 142 ft. over SW. slope. 2.10 State highway (Black Canyon road) bears NW. and SE. 10.60 Ravine, course NW. Ascend 30 ft. over NE. slope. 14.88 Top of spur, bears NW. Old road, bears NW. and SE. Enter rolling land. Descend 15 ft. over W. slope. 18.16 Drain, course N. Ascend 20 ft. over E. slope. 20.93 Top of low spur, bears NE. Descend gradually over NW. slope to 22.43 Fall 12 lks. N. 19½° W., from Cor. No. 4 of the "Clara" claim, identical with Cor. No. 4 of the "Linna", hereinbefore described. The true course and dist. of the S. side line (3-4) of the "Clara" pat lode mining claim are, therefore, S. 70° 11' W., 22.43 chs. The west end line (4-1) of the "Clara" being identical with E. end line (4-1) of the "Linna" has been re- traced in connection with the "Linna" as hereinbefore described, and the true course and dist. of said line found to be N. 19° 30' W., 9.01 chs. Total area of "Clara" claim - - - - - 20.16 acres.
--------	--

Retracement of Part of the Subdivision Lines of
Township 14 North, Range 2 West.

Chains	<p>Part of the Subdivision Lines of Township 14 North, Range 2 West, were surveyed in 1871 by S. W. Foreman, U. S. D. S., establishing closing cors. on the boundaries of "Camp Whipple" Military Reservation, at the several points of intersection of the subdivision lines therewith, as shown on plat of said township approved Oct. 20, 1871.</p> <p>In 1875 the portion of "Camp Whipple" not in conflict with "Fort Whipple" military reservation, was subdivided by S. B. Foster, U. S. D. S., who retraced the N. and W. bdrs. of "Fort Whipple" and established closing cors. thereon at the several points of intersection of the subdivision lines therewith, as shown on plat of said T., approved March 15, 1876.</p> <p>Deputy Surveyor Foster made no retracement of the E. and S. bdrs. of "Fort Whipple", and did not establish closing cors. at the several points of intersection of the subdivision lines therewith.</p> <p>The segregation of "Fort Whipple" military reservation, along its E. and S. bdrs. as shown on plat of the T. approved March 15, 1876, was accomplished by computation in the Office of the Surveyor General at Tucson, Ariz., and there is no record on file of establishment of closing cors. for the subdivision lines intersecting said bdrs.</p> <p>The plat of this township approved March 15, 1876, eliminated those subdivision lines of the 1871 survey situated within the "Fort Whipple" military reservation, and the previously subdivided areas therein.</p> <p>No retracement or resurvey of any of the subdivision lines of this T. is of record, except a retracement of the line bet. secs. 25 and 26 by C. B. Foster, U. S. D. S. in 1875.</p> <p>The following notes describe a retracement of the subdivision line between secs. 22 and 27.</p> <p style="text-align: center;">- - - - -</p> <p>From the original cor. of secs. 21, 22, 27 and 28. East, on random line, bet. secs. 22 and 27.</p> <tr> <td>40.00</td><td>Diligent search in this vicinity fails to reveal any trace of the original $\frac{1}{4}$ sec. cor.</td></tr> <tr> <td>79.31</td><td>Fall 88 lks. S. of original cor. of secs. 22, 23, 26 and 27.</td></tr> <tr> <td></td><td>The true course and dist. of line bet. secs. 22 and 27 are, therefore, S. 89° 22' W., 79.31 chs.</td></tr> <tr> <td></td><td style="text-align: center;">- - - - -</td></tr> <tr> <td></td><td>From original cor. of secs. 22, 23, 26 and 27, reconstructed as hereinafter described.</td></tr> <tr> <td></td><td>S. 89° 22' W., on true line, bet. secs. 22 and 27.</td></tr> <tr> <td></td><td>Over rolling and broken land, thru scattering undergrowth. Descend gradually over SW. slope.</td></tr> <tr> <td>4.70</td><td>Barbed wire fence, bears N. and S.</td></tr> <tr> <td>6.90</td><td>Ravine, course SE. Ascend 148 ft. over E. slope.</td></tr> <tr> <td>13.20</td><td>Top of spur, bears S. Descend 70 ft. over W. slope.</td></tr> <tr> <td>19.70</td><td>Road, bears S. 80° E., and NW.</td></tr> <tr> <td>22.50</td><td>Wash, course N. 10° E. Ascend 70 ft. over E. slope.</td></tr> <tr> <td>31.00</td><td>Top of spur, bears N. 20° E. Descend 60 ft. over NW. slope.</td></tr> <tr> <td>36.86</td><td>Wash, course N. Electric power transmission line bears N. 11° E., and S. 11° W. Ascend 12 ft. over E. slope to</td></tr>	40.00	Diligent search in this vicinity fails to reveal any trace of the original $\frac{1}{4}$ sec. cor.	79.31	Fall 88 lks. S. of original cor. of secs. 22, 23, 26 and 27.		The true course and dist. of line bet. secs. 22 and 27 are, therefore, S. 89° 22' W., 79.31 chs.		- - - - -		From original cor. of secs. 22, 23, 26 and 27, reconstructed as hereinafter described.		S. 89° 22' W., on true line, bet. secs. 22 and 27.		Over rolling and broken land, thru scattering undergrowth. Descend gradually over SW. slope.	4.70	Barbed wire fence, bears N. and S.	6.90	Ravine, course SE. Ascend 148 ft. over E. slope.	13.20	Top of spur, bears S. Descend 70 ft. over W. slope.	19.70	Road, bears S. 80° E., and NW.	22.50	Wash, course N. 10° E. Ascend 70 ft. over E. slope.	31.00	Top of spur, bears N. 20° E. Descend 60 ft. over NW. slope.	36.86	Wash, course N. Electric power transmission line bears N. 11° E., and S. 11° W. Ascend 12 ft. over E. slope to
40.00	Diligent search in this vicinity fails to reveal any trace of the original $\frac{1}{4}$ sec. cor.																												
79.31	Fall 88 lks. S. of original cor. of secs. 22, 23, 26 and 27.																												
	The true course and dist. of line bet. secs. 22 and 27 are, therefore, S. 89° 22' W., 79.31 chs.																												
	- - - - -																												
	From original cor. of secs. 22, 23, 26 and 27, reconstructed as hereinafter described.																												
	S. 89° 22' W., on true line, bet. secs. 22 and 27.																												
	Over rolling and broken land, thru scattering undergrowth. Descend gradually over SW. slope.																												
4.70	Barbed wire fence, bears N. and S.																												
6.90	Ravine, course SE. Ascend 148 ft. over E. slope.																												
13.20	Top of spur, bears S. Descend 70 ft. over W. slope.																												
19.70	Road, bears S. 80° E., and NW.																												
22.50	Wash, course N. 10° E. Ascend 70 ft. over E. slope.																												
31.00	Top of spur, bears N. 20° E. Descend 60 ft. over NW. slope.																												
36.86	Wash, course N. Electric power transmission line bears N. 11° E., and S. 11° W. Ascend 12 ft. over E. slope to																												

Retracement of Part of the Subdivision Lines of
Township 14 North, Range 2 West.

Chains	
39.655	(Midpoint) Point for reestablished $\frac{1}{4}$ sec. cor. of secs. 22 and 27. Ascend 17 ft. over E. slope..
42.38	Barbed wire fence, bears N. and S.
42.50	Thence along N. slope. Enter scattering timber
50.15	Wash, course NE. Ascend 46 ft. over SE. slope.
62.00	Top of low spur, bears NE. Descend 16 ft. over NW.slope.
65.03	Wash, course N. Ascend gradually over NE. slope to sec. cor.
71.76	Telephone line, bears N..20° E., and S. 20° W.
74.70	Old road bears N. 60° E., and S. 60° W.
76.70	Wash, course NE.
79.20	Wash, course N. 50° E.
79.31	Intersect the original cor. of secs. 21, 22, 27 and 28, reconstructed as hereinafter described.
	Land, rolling and broken.
	Soil, stony, 3rd rate.
	Timber, oak and cedar.
	Undergrowth, scrub oak.

Resurvey of Part of the Subdivision Lines of
Township 14 North, Range 2 West.

Chains	<p>The subdivision lines of Township 14 North, Range 2 West, were surveyed by S. W. Foreman, and C. B. Foster, U. S. Deputy Surveyors, in 1871 and 1875, respectively, as hereinbefore described in notes of "Retracement of Part of the Subdivision Lines of T. 14 N., R. 2 W."</p> <p>The following notes describe a resurvey of the line bet. secs. 25 and 36, and of all of the subdivision lines which intersect the bdrs. of the "Whipple Barracks Military Reservation."</p> <p>In this resurvey closing cors. are established at all intersections of subdivision lines with the East and South bdrs. of said reservation and reestablished at all intersections of subdivision lines with the West and North bdrs. of same.</p> <p style="text-align: center;">- - - - - Retracement for Resurvey. - - - - -</p> <p>From orig. cor. of secs. 1, 2, 35 and 36 on S. bdy. of T. North, on random line, bet. secs. 35 and 36.</p> <p>40.00 Diligent search in this vicinity fails to reveal any trace of the original $\frac{1}{4}$ sec. cor. Continue line and measurement.</p> <p>85.89 Fall 5.15 chs. E. of original cor. of secs. 25, 26, 35 and 36. True course and dist. of line bet. secs. 35 and 36 are, therefore, N. $3^{\circ} 26'$ W., 86.04 chs.</p> <p style="text-align: center;">- - - - -</p> <p>From original cor. of secs. 25, 26, 35 and 36. East, on random line, bet. secs. 25 and 36.</p> <p>40.00 Diligent search in this vicinity fails to reveal any trace of the original $\frac{1}{4}$ sec. cor. Set temp. $\frac{1}{4}$ sec. cor. Continue line and measurement.</p> <p>84.68 Fall 65 lks. S. of the original cor. of secs. 25, 30, 31 and 36, on the E. bdy. of the Tp. True course and dist. of line bet. secs. 25 and 36 are, therefore, S. $89^{\circ} 33'$ W., 84.68 chs.</p> <p style="text-align: center;">- - - - -</p> <p>From reestablished cor. of secs. 2, 3, 34 and 35 on S. bdy. of Tp. North, on random line, bet. secs. 34 and 35.</p> <p>20.70 Intersect S. bdy. (line 4-1) of "Whipple Barracks Military Reservation". Set temp. closing cor. of secs. 34 and 35. Continue line and measurement.</p> <p>40.00 Diligent search in this vicinity fails to reveal any trace of original $\frac{1}{4}$ sec. cor. Continue line and measurement.</p> <p>67.60 Diligent search in this vicinity fails to reveal any trace of the original closing cor. of secs. 34 and 35, established in 1871 on the East bdy. of "Camp Whipple" Military Reservation. This point being the terminus of the original survey of the subdivision line bet. secs. 34 and 35, and the above described retracement having failed to locate any original cor. monument on the line for control of bearing thereof, the true course and dist. of the portion of the line outside the "Whipple Barracks Military Reservation" are North, 20.70 chs.</p> <p style="text-align: center;">- - - - -</p> <p>From the original cor. of secs. 25, 26, 35 and 36. West, on random line, bet. secs. 26 and 35.</p> <p>13.47 Intersect E. bdy. (line 3-4) of "Whipple Barracks Military Reservation". Set temp. closing cor. of secs. 26 and 35. Continue line and measurement.</p>
--------	--

BOOK 3869

Resurvey of Part of the Subdivision Lines of
Township 14 North, Range 2 West.

Chains	
40.00	Diligent search in this vicinity fails to reveal any trace of original $\frac{1}{4}$ sec. cor. Continue line and measurement.
67.60	Diligent search in this vicinity fails to reveal any trace of the original closing cor. of secs. 26 and 35, established in 1871 on the East bdy. of "Camp Whipple". This point being the terminus of the original survey of the subdivision line bet. secs. 26 and 35, and the above described retracement having failed to locate any original cor. monument on the line for control of bearing thereof, the true course and dist. of the portion of the line outside the "Whipple Barracks Military Reservation" are, West, 13.47 chs. ----- From original cor. of secs. 22, 23, 26 and 27. South, on random line, bet. secs. 26 and 27.
23.39	Intersect N. bdy. (line 2-3) of "Whipple Barracks Military Reservation". Set temp. closing cor. of secs. 26 and 27. Continue line and measurement.
25.13	Diligent search in this vicinity fails to reveal any trace of original closing cor. of secs. 26 and 27, established in 1875 on the North bdy. of "Fort Whipple". This point being the terminus of the original survey of line bet. secs. 26 and 27, and the above described retracement having failed to locate the original closing cor. for control of bearing, the true course and dist. of the portion of the line outside the "Whipple Barracks Military Reservation" are, South 23.39 chs. ----- From reestablished cor. of secs. 3, 4, 33 and 34, on S. bdy. of T. North, on random line, bet. secs. 33 and 34 ($S.\frac{1}{2}$).
20.00	Diligent search in this vicinity fails to reveal any trace of the original closing cor. of secs. 33 and 34, established in 1871 on the South bdy. of "Camp Whipple". Continue line and measurement.
40.22	Fall 14 lks. E. of the recognized $\frac{1}{4}$ sec. cor. of secs. 33 and 34. True course and dist. of $S.\frac{1}{2}$ of line bet. secs. 33 and 34 are therefore N. $0^{\circ} 12' W.$, 40.22 chs. Thence North, on random line, bet. secs. 33 and 34 ($N.\frac{1}{2}$).
27.00	Diligent search in this vicinity fails to reveal any trace of the original closing cor. of secs. 33 and 34, established in 1875 on the West bdy. of "Ft. Whipple". This point being the terminus of the original survey of the $N.\frac{1}{2}$ of the subdivision line bet. secs. 33 and 34, and the above described retracement having failed to locate the original closing cor., for control of bearing, the true course of the portion of the line outside "Whipple Barracks Military Reservation" is North. ----- From original cor. of secs. 21, 22, 27 and 28. South, on random line, bet. secs. 27 and 28.
22.44	Intersect N. bdy. (line 2-3) of "Whipple Barracks Military Reservation". Set temp. closing cor. of secs. 27 and 28. Continue line and measurement.
25.13	Diligent search in this vicinity fails to reveal any trace of original closing cor. of secs. 27 and 28, established in 1875 on the N. bdy. of "Fort Whipple".

Resurvey of Part of the Subdivision Lines of
Township 14 North, Range 2 West.

Chains	<p>This point being the terminus of the original survey of the subdivision line bet. secs. 27 and 28, and the above described retracement having failed to locate the original closing cor. for control of bearing, the true course and dist. of the portion of the line outside the "Whipple Barracks Military Reservation" are South, 22.44 chs.</p> <p>-----</p> <p>From recognized original cor. of secs. 28, 29, 32 and 33. East, on random line, bet. secs. 28 and 33.</p> <p>40.00 Diligent search in this vicinity fails to reveal any trace of original $\frac{1}{4}$ sec. cor..</p> <p>Set temp. $\frac{1}{4}$ sec. cor. of secs. 28 and 33.</p> <p>Continue line and measurement.</p> <p>68.40 Diligent search in this vicinity fails to reveal any trace of the original closing cor. of secs. 28 and 33, established in 1875 on the West bdy. of "Fort Whipple".</p> <p>Continue line and measurement.</p> <p>69.95 Intersect the West bdy. (line 1-2) of "Whipple Barracks Military Reservation". Set temp. C.C. of secs. 28 and 33.</p> <p>The 68.40 ch. point having been the terminus of the original survey of the subdivision line bet. secs. 28 and 33, and the above described retracement having failed to locate either the original $\frac{1}{4}$ sec. cor. or the original closing cor. for control of bearing, the true course and dist. of the portion of the line outside the "Whipple Barracks Military Reservation" are East, 69.95 chs.</p> <p>To maintain original proportion between cor. intervals on this line, gives 40.91 chs. and 29.04 chs. for the West and East halves respectively.</p> <p>-----</p> <p>R E S U R V E Y.</p> <p>-----</p> <p>From the original cor. of secs. 1, 2, 35 and 36 on S. bdy. of the Tp., reconstructed as hereinbefore described,</p> <p>N. $3^{\circ} 26' W.$, on true line, bet. those portions of secs. 35 and 36, lying S. of the Whipple Barracks Military Reservation.</p> <p>Over mountainous land, thru dense undergrowth.</p> <p>Descend 99 ft. over NW. slope.</p> <p>3.38 Rocky ravine course W. Ascend over S. slope.</p> <p>6.00 Top of spur 3 ft. above ravine bears W.</p> <p>Descend 88 ft. over N. slope to</p> <p>13.20 Ascend 8 ft.</p> <p>16.70 Descend 279 ft. over NW. slope.</p> <p>20.06 Intersect the S. bdy. of the Whipple Barracks Military Reservation at a point 41.20 chs. S. $89^{\circ} 58' W.$ of the SE. cor. (No. 4).</p> <p>At point of intersection:</p> <p>Set an iron post 3 ft. long, 2 ins. in diam., 27 ins. in the ground for closing cor. of secs. 35 and 36, marked on brass cap</p> <div><div>W B M R</div><div>S 35 S 36</div><div>T 14 N R 2 W</div><div>C C</div><div>1927</div></div> <p>Raise a mound of stone 2 ft. base, $1\frac{1}{2}$ ft. high S. of cor. Thence N. $3^{\circ} 26' W.$, on a blank line across Military Reservation.</p> <p>19.13 Telephone line bears N. $60^{\circ} E.$, and S: $60^{\circ} W.$</p> <p>25.64 Old road to Prescott, Ariz., bears NE. and SW.</p> <p>39.94 Ravine, course W. Ascend 32 ft. over S. slope.</p> <p>42.24 Top of spur, bears NW. Descend 63 ft. over NE. slope to</p> <p>49.75 Intersect the E. bdry of the Whipple Barracks Military Reservation at a point 66.44 chs. N. $41^{\circ} 43' 50'' W.$ of the SE. cor. (No. 4).</p>
--------	--

Resurvey of Part of the Subdivision Lines of
Township 14 North, Range 2 West.

Chains	At the point of intersection: Set an iron post 3 ft. long, 2 ins. in diam., 27 ins. in the ground for closing cor. of secs. 35 and 36, marked on brass cap
	<div style="text-align: center;"> </div>
	Raise a mound of stone 2 ft. base, $1\frac{1}{2}$ ft. high N. of cor. Thence N. $3^{\circ} 26'$ W., on true line, bet. those portions of secs. 35 and 36 lying NE. of the E. bdy. of the Whipple Barracks Military Reservation.
	Over rolling land, thru scattering undergrowth. Descend gradually over NE. slope.
5.95	Wire fence bears NW. and SE.
8.55	Wire fence bears NE. and SW.
10.50	Road to Prescott, Arizona, bears N. 60° W., and S. 60° E.
13.00	Wash, 15 lks. wide, course W. Ascend 31 ft. over SW. slope to
16.23	Intersect the orig. cor. of secs. 25, 26, 35 and 36, which is a granite stone 14 x 12 x 10 ins., set in a mound of stone, marked with 1 notch on each of E. and S. edges. Reconstruct this cor. as follows: Alongside of the old stone: Set an iron post 3 ft. long, 2 ins. in diam. 27 ins. in the ground for cor. of secs. 25, 26, 35 and 36, marked on brass cap
	<div style="text-align: center;"> </div>
	Raise a mound of stone 2 ft. base, $1\frac{1}{2}$ ft. high W. of cor. Land, mountainous and rolling. Soil, stony, 3rd rate. Timber, oak. Undergrowth, scrub oak.
<hr/>	
	From the cor. of secs. 25, 30, 31 and 36 on the E. bdy. of Tp., hereinbefore described. S. $89^{\circ} 33'$ W., on true line, bet. secs. 25 and 36. Over mountainous land, thru dense undergrowth. Descend 104 ft. over NW. slope.
6.57	Ascend 30 ft. over NE. slope.
11.70	Top of spur, bears NW. Descend 93 ft. over W. slope to
20.00	Drain, course NW. Descend 20 ft. over NW. slope.
24.70	Drain, course N. Asc. 38 ft. over E. slope.
30.70	Top of spur, bears N. Descend 90 ft. over W. slope.
37.40	Ravine, course NW. Enter scattering undergrowth. Ascend 115 ft. over NE. slope to
42.34	(Midpoint) Set an iron post, 3 ft. long, 1 in. in diam., 26 ins. in the ground, for reestablished $\frac{1}{4}$ sec. cor. of secs. 25 and 36, marked on brass cap
	<div style="text-align: center;"> </div>
	and raise a md. of stone, 2 ft. base, $1\frac{1}{2}$ ft. high, N. of cor. Ascend 91 ft. over NE. slope.

Resurvey of Part of the Subdivision Lines of
Township 14 North, Range 2 West.

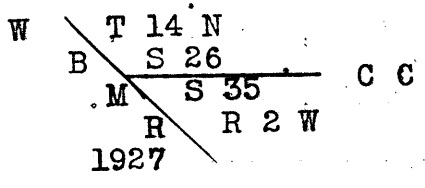
Chains	
51.70	Top of ridge, bears NW. and SE. Descend 230 ft. over SW. slope to sec. cor.
72.00	Wire fence, bears NW. and SE.
83.40	State highway (Black Canyon road) Phoenix to Prescott, bears NW. and SE.
84.50	Wire fence, bears NW. and SE.
84.68	Intersect the orig. cor. of secs. 25, 26, 35 and 36, hereinbefore described.
	Land, mountainous.
	Soil, stony, 3rd rate.
	Timber, none.
	Undergrowth, scrub oak.

	From the reestablished cor. of secs. 2, 3, 34 and 35 on S. bdy. of Tp., hereinbefore described.
	North (record course) on true line bet. secs. 34 and 35. Over level sandy bottom land.
0.70	Water pipe-line from well bears N. to dwelling house and S. 10° E. to well.
0.96	Wire fence at foot of bluff bears N. Leave level land. Ascend 20 ft. over SW. slope.
3.10	Wire fence bears E. and W. Top of ascent on spur bears NW. Thence over rolling land.
8.85	Water pipe-line bears N. 30° E. 5.00 chs. to dwelling house.
9.10	Road, bears N. 70° E., and S. 70° W.
	Gate in fence line bears NE. and SW.
	Descend 29 ft. over NE. slope.
9.92	Ravine course N. 70° W. Ascend 46 ft.
10.20	Telephone line to Prescott, Arizona, bears E. and W.
12.85	The SW. cor. of frame house 16 x 32 ft. bears E. 205 lks. dist.
13.50	Road bears NW. and SE. Descend 29 ft. over NE. slope.
15.00	Old road bears N. and S. 10° W.
17.40	Leave road, bears N. 20° W.
18.05	Wire fence bears N. 20° W. and S.
20.20	Wash 5 lks. wide, course N. 30° W. Ascend 3 ft.
20.70	Intersect the S. bdy. of the Whipple Barracks Military Reservation at a point 37.67 chs. N. 89° 58' E. of the SW. cor. (No. 1).
	At the point of intersection:
	Set an iron post 3 ft. long, 2 ins. in diam., 27 ins. in the ground for closing cor. of secs. 34 and 35, marked on brass cap
	<div style="text-align: center;"> W B M R S 34 S 35 T 14 N R 2 W C C 1927 </div>
	from which
	A juniper 8 ins. in diam., bears S. 33½° E., 292 lks. dist., marked T 14 N R 2 W S 35 CCBT.
	A pinion 14 ins. in diam., bears S. 56½° W., 186 lks. dist., marked T 14 N R 2 W S 34 CCBT.
	The SW. cor. of Military Reservation Cemetery bears N. 12½° E., 408 lks. dist., from this C. C., and the SE. and SW. sides of same bear N. 47½° E., 2.00 chs., and N. 43½° W., 5.77 chs. respectively from said SW. cor.
	Land, rolling and hilly.
	Soil, stony and sandy, 3rd rate.
	Timber, oak and juniper.
	Undergrowth, scrub oak.

BOOK 3865

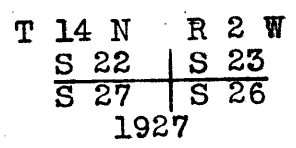
Resurvey of Part of the Subdivision Lines of
Township 14 North, Range 2 West.

Chains From the cor. of secs. 25, 26, 35 and 36.
West, on true line, bet. secs. 26 and 35.
Over rolling land, thru scattering undergrowth.
Descend 46 ft. over SW. slope.
8.55 Wire fence bears N. and S.
10.30 Road to Prescott, Arizona, bears NW. and SE.
10.70 Wire fence bears NW. and SE.
12.50 Wash, 30 lks. wide, course NW.
Ascend 8 ft. over NE. slope to
13.47 Intersect the E. bdry. of the Whipple Barracks Military
Reservation at a point 88.14 chs. N. 41° 43' 50" W.
of the SE. cor. (No. 4).
At the point of intersection:
Set an iron post 3 ft. long, 2 ins. in diam., with mark-
ed stone, 24 ins. in the ground supported in a mound
of stone for closing cor. of secs. 26 and 35, marked
on brass cap



from which,
A pine 16 ins. in diam., bears N. 32½° W., 173
lks. dist., marked T 14 N R 2 W S 26 C C B T
No other bearing trees within limits.
Land, rolling.
Soil, stony, 3rd rate.
Timber, oak.
Undergrowth, scrub oak.

The original cor. of secs. 22, 23, 26 and 27, is a gran-
ite stone 12 x 10 x 10 ins. loosely set, marked with
2 notches on E. and S. edges. No cor. accessories.
Reconstruct this cor. as follows:
Alongside of the old cor:
Set an iron post, 3 ft. long, 2 ins. in diam., 27 ins.
in the ground, for cor. of secs. 22, 23, 26 and 27,
marked on brass cap



Raise a mound of stone 2 ft. base, 1½ ft. high W. of cor.
Thence
South (record course) on true line bet. secs. 26 and 27.
Over mountainous land, thru scattering undergrowth.
Descend 34 ft. over SW. slope.
2.45 Ravine 8 lks. wide 6 ft. deep, course SE.
Ascend 28 ft. over NE. slope.
4.50 Gulch, 3 lks. wide, 4 ft. deep, course E.
7.50 Top of spur bears S. 70° E. Descend 50 ft. over SW. slope
8.80 Road bears N. 70° W., and S. 70° E.
10.90 Ravine 6 lks. wide, course S. 50° E.
Ascend 41 ft. over NE. slope.
13.25 Top of spur, bears E. Descend 22 ft. over S. slope.
16.14 Ravine 5 lks. wide, course N. 60° E.
Ascend 112 ft. over NW. slope.
22.40 Wire fence bears NW. and SE.

Resurvey of Part of the Subdivision Lines of
Township 14 North, Range 2 West.

Chains

- 22.50 Top of spur, bears E. Descend over S. slope.
23.39 Intersect the N. bdy. of the Whipple Barracks Military
Reservation at a point 18.58 chs. West of the true
point for reestablished NE. Cor. (No. 3).
At the point of intersection:
Set an iron post 3 ft. long, .2 ins. in diam., 27 ins. in
the ground for reestablished closing cor. of secs. 26
and 27, marked on brass cap

C C
T. 14 N R. 2 W
S 27 S 26
W B M R
1927

Raise a mound of stone 2 ft. base, $1\frac{1}{2}$ ft. high N. of cor.
Land, mountainous.
Soil, stony, 3rd rate.
Timber, none.
Undergrowth, scrub oak.

From the reestablished cor. of secs. 3, 4, 33 and 34 on
S. bdy. of Tp.; hereinbefore described.
N. $0^{\circ} 12'$ W., on true line, bet. secs. 33 and 34 ($S. \frac{1}{2}$).
Over rolling land along W. line of Pleasant Street, in
City of Prescott.

- Desc. 58 ft. over NW. slope.
10.70 Center of Willis Street, bearing E. and W.
19.60 Center of Sheldon Street bearing E. and W.
28.30 Center of Pine Street, bearing E. and W.
29.60 Center of Santa Fe, Prescott, and Phoenix Ry., bears N.
 $47\frac{1}{2}^{\circ}$ E. and S. $47\frac{1}{2}^{\circ}$ W.
35.09 Center of Ry. switch track bears E. and W.
36.30 Road bears E. and W.
40.22 Intersect the recognized $\frac{1}{4}$ sec. cor. of secs. 33 and 34,
which is a granite stone 12 x 8 x 4 ins. above ground,
marked $\frac{1}{4}$ on E. face. Reconstruct this cor. as follows;
Alongside of the stone monument:
Set an iron post 3 ft. long, 1 in. in diam. with charred
stake 27 ins. in the ground for $\frac{1}{4}$ sec. cor. of secs.
33 and 34, marked on brass cap

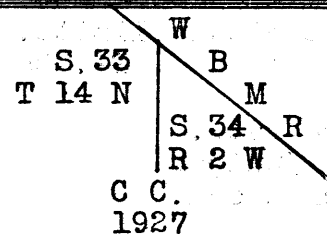
S 33 $\frac{1}{4}$ S 34
1927

Thence

- North (record course) on true line bet. secs. 33 and 34
($N. \frac{1}{2}$). Along R. R. spur track.
5.00 End of track. Descend 20 ft.
8.93 Gulch, course NE.
14.93 Granite Creek, containing stream of clear water 20 fks.
wide, 4 ins. deep, course N. 70° E.
18.88 Leave Granite Creek bottom bears E. and W. Asc. 52 ft. over S. slope.
20.28 Road bears NW. and SE.
20.38 Electric Power line bears N. 80° E.; and S. 80° W.
27.70 Intersect W. bdy. of the Whipple Barracks Military Re-
servation at a point 62.38 chs. N. $41^{\circ} 50'$ W., of
the SW. cor. (No. 1).
At point of intersection:
Set an iron post 3 ft. long, 2 ins. in diam., 27 ins. in
the ground alongside of R. R. T-rail projecting 12
ins. above ground, for reestablished closing cor. of
secs. 33 and 34, marked on brass cap

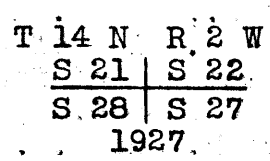
Resurvey of Part of the Subdivision Lines of
Township 14 North, Range 2 West.

Chains



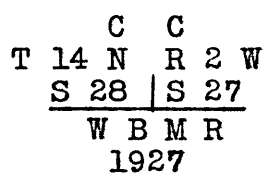
from which
A pine 14 ins. in diam., bears S. 3° E., 112 lks.
dist., marked T 14 N R 2 W S 34 C C B T.
A pine 14 ins. in diam., bears S $5\frac{1}{4}^{\circ}$ W., 104 lks.
dist., marked T 14 N R 2 W S 33 C C B T.
Land, rolling.
Soil, sandy, 3rd rate.
Timber, none.
Undergrowth, none.

The original cor. of secs. 21, 22, 27 and 28 is a granite
stone 14 x 10 x 8 ins., lying on the ground, marked
with 2 grooves on S. and 3 grooves on E. faces; no
cor. accessories.
Reconstruct this cor. as follows: alongside of the old
cor.:
Set an iron post 3 ft. long, 2 ins. in diam., 27 ins. in
the ground for cor. of secs. 21, 22, 27 and 28, marked
on brass cap



from which
A cedar 10 ins. in diam., bears N. $72\frac{1}{2}^{\circ}$ E., 116
lks. dist., marked T 14 N R 2 W S 22 B T.
A cedar 10 ins. in diam., bears S. $7\frac{1}{2}^{\circ}$ E., 130
lks. dist., marked T 14 N R 2 W S 27 B T.
A pine 24 ins. in diam., bears S. 63° W., 224
lks. dist., marked T 14 N R 2 W S 28 B T.
A cedar 6 ins. in diam., bears N. $70\frac{1}{4}^{\circ}$ W., 88
lks. dist., marked T 14 N., R 2 W S 21 B T.

Thence
South (record course) on true line, bet. secs. 27 and 28.
Over rolling land, thru scattering timber and dense under-
growth.
0.10 Wash, course N. 50° E. Asc. 35 ft. over NW. slope.
0.20 Old road to Prescott, Ariz., bears NE. and SW.
5.00 Top of NW. slope, thence over W. slope. Asc. 50 ft. to
closing corner.
16.07 Telephone line bears N. $22\frac{1}{4}^{\circ}$ E., and S. $22\frac{1}{4}^{\circ}$ W.
22.44 Reservation fence line bears E. and W.
Intersect the N. bdry. of the Whipple Barracks Military
Reservation at a point 59.54 chs. East of the NW.
cor. (No. 2).
At the point of intersection:
Set an iron post 3 ft. long, 2 ins. in diam., 27 ins. in
the ground for reestablished closing cor. of secs. 27
and 28, marked on brass cap



BOOK 2669

Resurvey of Part of the Subdivision Lines of
Township 14 North, Range 2 West.

Chains No bearing trees within limits.
Raise a mound of stone 2 ft. base, $1\frac{1}{2}$ ft. high, N. of cor.
Land, rolling.
Soil, stony, 3rd rate.
Timber, oak and juniper.
Undergrowth, scrub oak.

The recognized original cor. of secs. 28, 29, 32 and 33,
is a granite stone 8 x 5, x 2 ins. above ground, firmly
set, marked with 4 grooves on E. and 1 groove on S.
faces. No cor. accessories. Reconstruct this cor.
as follows:

Alongside of the stone cor. monument:

Set an iron post 3 ft. long, 2 ins. in diam., with brick
deposited at base, 28 ins. in the ground for cor. of
secs. 28, 29, 32 and 33, marked on brass cap

T 14 N R 2 W	
S 29	S 28
S 32	S 33
-1927	

Thence

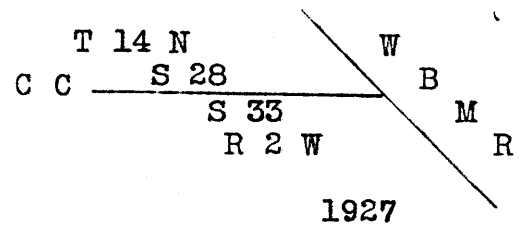
East (record course) on true line, bet. secs. 28 and 33.
Over level land in yard around dwelling house.

- 1.65 Wire fence bears N. 10° W., and S. 10° E.
2.15 Center of Highway from Prescott to Williamson Valley
bears N. 10° W., and S. 10° E.
2.60 Wire fence along E. side of highway bears N. 10° W., and
S. 10° E. West end of fence line bears E., thence
along S. side of same.
14.99 Wire fence bears N. and S.E. and W. fence line offsets
S. 43 lks. at this point.
18.11 East and West fence line offsets back to line at this
point
22.58 Wire fence bears N. and S.
24.00 Road bears N. and S.
24.70 A frame house 18 x 24 ft. on line.
26.62 Wire fence at rear of house bears N. and S.
29.60 Center of street bears N. and S.
29.96 Wire fence bears N. and E.
35.20 Center of Street bears N. and S.
36.00 Gulch 3 ft. deep, course S.
39.55 Wire fence bears N.
40.91 (Proportional dist.) Point for reestablishment of the
 $\frac{1}{4}$ sec. cor. of secs. 28 and 33. No monument set here.
40.63 Sand wash 6 lks. wide course SE.
58.30 End of fence, turns N. 60° W.
58.50 Road bears N. 60° W., and SE. Leave level land bears
NW. and SE. enter hilly land, and scattering timber.
Ascend 55 ft. over SW. slope.
64.75 Top of spur bears S. Descend 28 ft. over E. slope.
69.95 Intersect the W. bdry. of the Whipple Barracks Military
Reservation at a point 76.93 chs. N. $41^{\circ} 50'$ W. of
the SW. cor. (No. 1).
At point of intersection:
Set an iron post 3 ft. long, 2 ins. in diam., 27 ins. in
the ground for closing cor. of secs. 28 and 33, marked
on brass cap

Resurvey of Part of the Subdivision Lines of
Township 14 North, Range 2 West.

BOOK 3866

Chains



No bearing trees within limits
Raise a mound of stone 2 ft. base, 1½ ft. high W. of cor.
Land, level and hilly.
Soil, sandy and stony, 2nd and 3rd rate.
Timber, oak and cedar.
Undergrowth, scrub oak.

CERTIFICATE OF UNITED STATES SURVEYOR.

I, Sidney E. Blout U.S. Cadastral Engineer, hereby certify upon honor that, in pursuance
supplemental
of special instructions received from the District Cadastral Engineer, for Group 140, Arizona

bearing date of the 31st day of May, 1927, I have well, faithfully, and truly

in my own proper person, and in strict conformity with said instructions, the Manual of Surveying Instruc-

tions, and the laws of the United States, retraced all those parts or portions of the South Bdy. and
and Subdivision lines of Tp. 14 North, R. 2 West, and Bdrs. of the "Linna
and Clara" Pat. lode mining claims, Min. Surv. No. 1364A in sec. 36 of said
Tp.,

and resurveyed all those parts or portions of

Boundaries of the Whipple Barracks Military Reservation

South Boundary, East Boundary and Subdivision Lines of

Township 14 North, Range 2 West of the Gila and Salt

River Base and Meridian, in the State of Arizona, which are represented in

and by diagram on page 1 hereof

the foregoing field notes as having been executed by me, and under my direction; and that all the corners of
said retracement

and resurvey have been established and perpetuated in strict accordance with the Manual of Surveying Instruc-

tions, and the special written instructions of the District Cadastral Engineer, for Group 140, Arizona

and in the specific manner described in the field notes, and that the foregoing are the original field notes of
such retracement and resurvey.

Place: Phoenix, Arizona.

Date: December 5, 1928.

Sidney E. Blout
U.S. Cadastral Engineer.

APPROVAL.

OFFICE OF U. S. SUPERVISOR OF SURVEYS,

Denver, Colo., November 8, 1929

The foregoing field notes of the retracement of Part of the South Boundary, and
Part of the Subdivision lines of Tp. 14 North, R. 2 West, and Bdrs. of the
"Linna and Clara" Pat. lode mining claims, Min. Surv. No. 1364A in sec. 36
of said Tp.,
and of the resurvey of

Boundaries of the Whipple Barracks Military Reservation,

Part of the South Bdy., Part of the East bdy., and Part of the

Subdivision Lines of Township 14 North, Range 2 West

of the Gila and Salt River Base and Meridian, State of Arizona.

executed by Sidney E. Blout, U.S. Cadastral Engineer

supplemental
under special instructions dated May 31, 1927 for Group 140, Arizona, having been
critically examined, and the necessary corrections and explanations made, the said field notes, and the retrac-
ments and resurveys
they describe, are hereby approved.

Wm. H. Johnson
U. S. Supervisor of Surveys.

~~I certify that the foregoing transcript of the field notes of the above described surveys in~~

~~has been correctly copied from the original notes on file in this office.~~

~~U. S. Supervisor of Surveys.~~