

4208

4-679  
(April 1933)UNITED STATES  
DEPARTMENT OF THE INTERIOR  
GENERAL LAND OFFICE

BOOK 4208

## FIELD NOTES

of RETRACEMENT of

Part of the boundary of Luis Maria Baca Float No. 5 and

Part of South bdy. of Frac. T. 18 N., R. 9 W.

of RESURVEY of

Part of the boundary of

Luis Maria Baca Float No. 5

Part of South bdy. of Frac. T. 18 N., R. 9 W.

West boundary and

North boundary of

Frac. T. 17 N., R. 9 W.

and of SURVEY of

East boundary and Subdivision lines of

Frac. Township 17 North, Range 9 West and

East boundary of Frac. T. 17 N., R. 9½ W.

Of the Gila and Salt River Meridian,

In the State of Arizona

EXECUTED BY

Ty White

Armand F. Allard, and

Norville E. Shearer, Public Land Surveyors.

Under supplemental special instructions dated October 28, 1937, which provided for the surveys included under Group No. 220, Arizona bearing the approval of the Commissioner of the General Land Office under date of November 4, 1937 and assignment instructions dated November 8, 1937.

Retracement  
Resurvey and Survey commenced January 13, 1938

Retracement  
Resurvey and Survey completed February 17, 1938

# INDEX DIAGRAM.

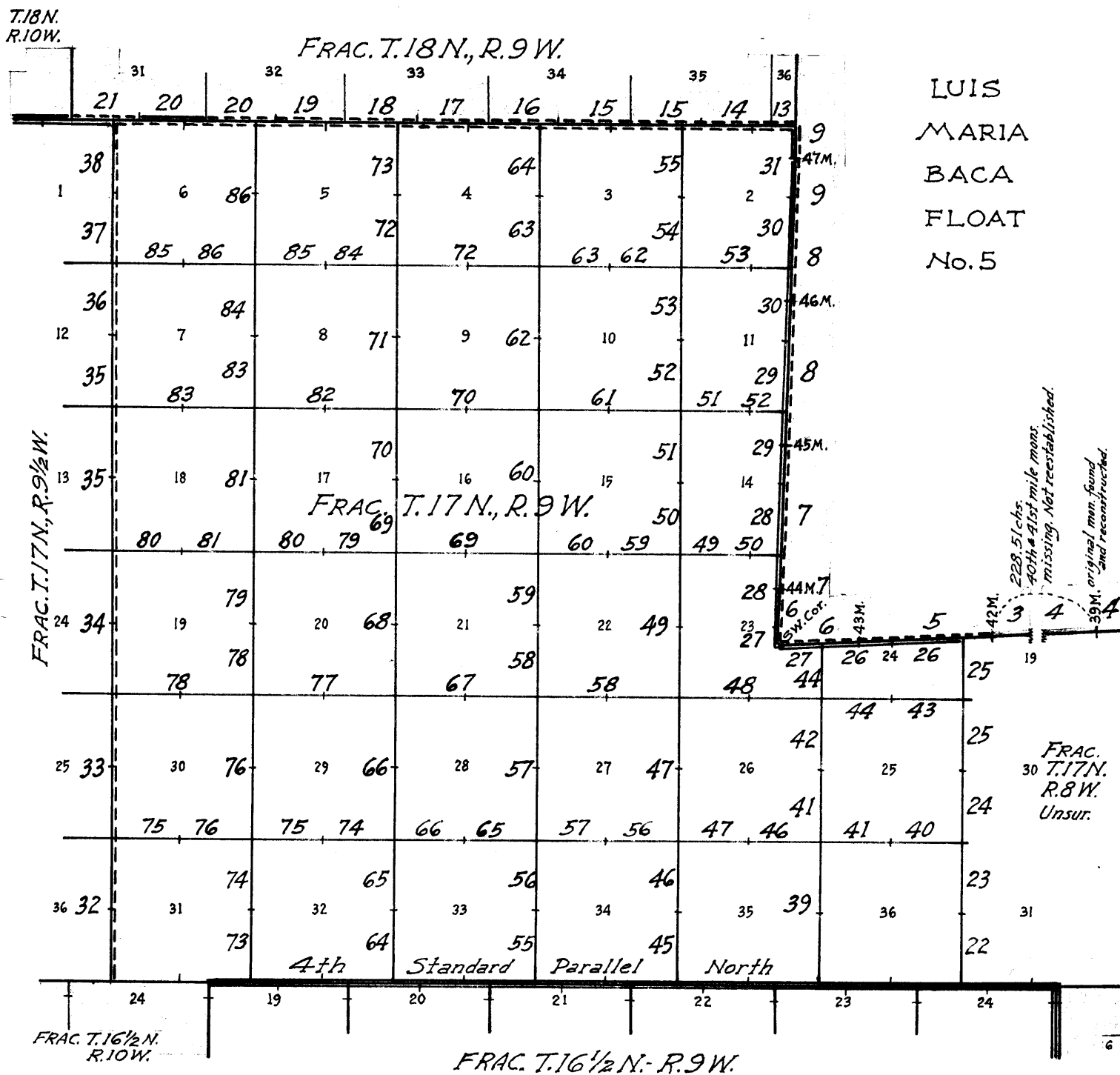
Township \_\_\_\_\_, Range \_\_\_\_\_

6	5	4	3	2	1
7	8	9	10	11	12
18	17	16	15	14	13
19	20	21	22	23	24
30	29	28	27	26	25
31	32	33	34	35	36

119

# INDEX~DIAGRAM~

BOOK 4208



BOOK 4208

10

The retracements, resurveys and surveys herein described were executed by Ty White, Armand F. Allard and Norville E. Shearer, Public Land Surveyors, using, respectively, Buff and Buff transit No. 18002, Young and Son's transit No. 8544, and Buff and Buff transit No. 10125. Each of these instruments is equipped with an improved Smith solar attachment and otherwise conforms to the standard specifications of the General Land Office. The instruments were examined by the District Cadastral Engineer for California and Arizona prior to the beginning of the surveys of this group, and were approved conditional upon satisfactory results of field tests of same.

The azimuths of all of the lines of survey herein described were determined with the solar attachments.

The measurements were made with Lufkin and Dietzgen steel tapes, 5 chs. in length, graduated every link for the first 100 lks., and the remainder at intervals of 10 lks. The tapes were tested by comparison with a Lufkin standard tape and found to be correct. All of the measurements were made on the slope, the vertical angle of each interval determined with a clinometer in good adjustment, and the horizontal equivalents entered in the field notes.

#### PRELIMINARY FIELD TESTS OF INSTRUMENTS.

Buff and Buff transit No. 18002  
Ty White, Public Land Surveyor

Jan. 12, 1938, at camp in NE $\frac{1}{4}$  SE $\frac{1}{4}$  of sec. 35, Frac. T. 17 N., R. 9 W., G. & S.R. Meridian, Arizona, latitude 34° 48' 28" N., longitude 113° 10' 42" W., examine the adjustments of Buff and Buff transit No. 18002 and find no errors; then, to test the solar apparatus of same by comparing its indications with a true meridian established by Polaris observation, proceed as follows:

at 3h. 17.6m., p.m.; 1.m.t., make an hour angle observation on Polaris east of the meridian, making four observations, two each with the telescope in direct and reversed positions, and recording the horizontal angles thus determined by reference to a flag set about 5 chs. north. Watch reads correct 105th meridian time by comparison with a Western Union Telegraph Co. clock.

Mean watch time of observations	3h. 50.3m. p.m.
Watch fast of 1.m.t.	32.7m.
Mean horizontal angle from	
Polaris W. to reference point	0° 56.5'
Azimuth of Polaris E.	0° 52.6'
True bearing of reference point	N. 0° 03.9' E.

Jan. 16, 1938, at same station, at 8h. 30m., a.m., app.t., set off 34° 48 $\frac{1}{2}$ ' N. on the latitude arc; 20° 56' S. on the declination arc; and determine a meridian with the solar, which agrees with the true meridian.

at app. noon, with the latitude arc unchanged; observe the sun on the meridian, and obtain a reading of 20° 55 $\frac{1}{2}$ ' S. on the declination arc, which agrees with the computed declination of the sun.

at 3h. 30m., p.m., app.t., with the latitude arc unchanged; set off 20° 53 $\frac{1}{2}$ ' S. on the declination arc; and determine a meridian with the solar, which agrees with the true meridian.

As all solar observations made during the usual hours of solar work come within 1' 30" of the true meridian, conclude that this instrument is in satisfactory adjustment on this date, prior to beginning the surveys with same which are described in the following field notes.

2.

Young and Son's transit No. 8544  
Armand F. Allard, Public Land Surveyor.

Jan. 28, 1938, at camp in NE $\frac{1}{4}$  of sec. 19, Frac. T. 16 $\frac{1}{2}$  N., R. 9 W., G. & S.R. Meridian, Arizona, latitude 34°48'06" N., longitude 113°14'12" W., examine the adjustments of Young & Son's transit No. 8544 and find no errors; then, to test the solar apparatus of same by comparing its indications with a true meridian determined at this station on Jan. 21, 1938, as described in field notes of survey of Frac. T. 16 $\frac{1}{2}$  N., R. 9 W., proceed as follows:

at 3h. 00m., a.m., app't., set off 34°48' N. on the latitude arc; 18°12' S. on the declination arc; and determine a meridian with the solar, which agrees with the true meridian.

at app. noon, with the latitude arc unchanged; observe the sun on the meridian, and obtain a reading of 18°11' S. on the declination arc, which agrees with the computed declination of the sun.

at 4h. 00m., p.m., app.t., with the latitude arc unchanged; set off 18°07' S. on the declination arc; and determine a meridian with the solar, which agrees with the true meridian.

As all solar observations made during the usual hours of solar work come within 1'30" of the true meridian, conclude that this instrument is in satisfactory adjustment on this date, prior to beginning the surveys with same which are described in the following field notes.

Buff and Buff transit No. 10125  
Norville E. Shearer, Public Land Surveyor.

Jan. 28, 1938, at camp near  $\frac{1}{4}$  sec. cor. of secs. 21 and 28, Frac. T. 17 N., R. 9 W., G. & S.R. Meridian, Arizona, latitude 34°50'05" N., longitude 113°13'20" W., at 11h. 12.0m. p.m., l.m.t., observe Polaris at western elongation, making four observations, two each with the telescope in direct and reversed positions, and mark the mean point in the line thus determined, by a nail in a stake driven firmly in the ground about 17 chs. north.

Azimuth of Polaris at western elongation: 1°14'56".

Jan. 29, 1938, at 7h. 30m., a.m., lay off the azimuth of Polaris 1°15' to the east, and mark the meridian thus determined, by a nail in a stake driven firmly in the ground about 17 chs. north.

at 8h. 00m., a.m., app.t., set off 34°50' N. on the latitude arc; 17°56' S. on the declination arc; and determine a meridian with the solar, which agrees with the true meridian.

at app. noon, with the latitude arc unchanged; observe the sun on the meridian and obtain a reading of 17°55' S. on the declination arc, which agrees with the computed declination of the sun.

at 4h. 00m., p.m., app.t., with the latitude arc unchanged; set off 17°51' S. on the declination arc; and determine a meridian with the solar, which agrees with the true meridian.

As all solar observations made during the usual hours of solar work come within 1'30" of the true meridian, conclude that this instrument is in satisfactory adjustment on this date, prior to beginning the surveys executed with same which are described in the following field notes.

## Resurvey: Part of boundary: Luis Maria Baca Float No. 5

3.

## Chains

The Luis Maria Baca Float No. 5 is a private land grant of about 99,450 acres, practically square in form, each of its four sides being about  $12\frac{1}{2}$  miles in length. It embraces all of T. 18 N., R. 8 W., and parts of Ts. 17 and 19 N., Rs. 7, 8 and 9 W. and Ts. 18 N., Rs. 7 and 9 W. The boundary of this land grant was completely surveyed in 1877 by C. B. Foster, U.S. Deputy Surveyor, initiating the survey at about the midpoint of the west line of the boundary; thence North about  $6\frac{1}{4}$  miles to the NW. cor.; thence East about  $12\frac{1}{2}$  miles to the NE. cor.; thence South about  $12\frac{1}{2}$  miles to the SE. cor.; thence West about  $12\frac{1}{2}$  miles to the SW. cor.; thence North about  $6\frac{1}{4}$  miles to the initial point on W. line of the boundary.

The boundary was marked each mile with a monument, counting from the initial point, such monuments being numbered consecutively from 1 to 49 inclusive, with the final fractional measurement being placed on the W. line of the boundary between the 49 mile monument and the initial point. The initial point and the four corners of the grant were also monumented and appropriately marked according to their several designations. The total length of the boundary as given in the official record of the original survey is 49 miles 68.89 chs.

Subsequent to the survey of the boundary of the grant, the survey of the various townships invaded and rendered fractional by the grant, required retracement and resurvey of portions of said grant bdy. in order to establish closing cors. thereon referring to the areas of public land adjoining.

These retracements and resurveys according to official records are: from 44th mile monument northerly to NW. cor., and easterly therefrom to the 7th mile monument, by P. Contzen, U.S. Deputy Surveyor, in 1893; bet. the 30th and 37th mile monuments by A. B. Mader, U.S.D.S. in 1905; between the 7th and 13th mile monuments by S. E. Blout, U.S. Surveyor in 1913; between the 13th and 22nd mile monuments by T. W. Bates and D. W. Eaton, U.S. Transitmen in 1918; between the 21st and 23rd mile monuments by Otis Ross, U.S. Surveyor in 1920; between the 22nd and 28th mile monuments by B. J. Mollette, U.S. Transitman in 1934; and between the 28th and 30th mile monuments by F. W. Forrest, Public Land Surveyor, in 1937.

No retracement or resurvey of the boundary of the grant between the 37th and 44th mile monuments is of record.

The following notes describe the resurvey of the grant bdy. from the 42nd mile monument westerly on the South line to the SW. cor., thence northerly on the W. line to the closing cor. of Frac. Ts. 17 and 18 N., R. 9 W., executed under this group in connection with survey of Frac. T. 17 N., R. 9 W.

#### Retracement for Resurvey.

From the SW. cor. of Luis Maria Baca Float No. 5,  
East, on random line.

- 47.54 Diligent search in this vicinity fails to reveal any trace of the 43rd mile monument.  
Set temp. mon. and continue line and measurement, searching diligently at 80 ch. intervals for the original mile monuments, and setting temp. mons. at such intervals.  
Fail to find any trace of the 42nd, 41st and 40th mile

## Resurvey: Part of boundary: Luis Maria Baca Float No. 5.

4.

Chains	mons., and at
349.54	<p>Intersect N. and S. line 16.69 chs. S. of the original 39th mile mon., which is a stone 5x5x2 ins. above ground, firmly set, marked with a cross (X). Alongside the stone, an oak post, 30 ins. long, 2 ins. in diam., blazed on one side, is lying on the ground.</p> <p>As this original mon. forms control for the reestablishment of missing 42nd and 43rd mile mons., reconstruct the same as follows:  Remove the marked stone, and in same place set an iron post, 3 ft. long, 2 ins. in diam., 27 ins. in the ground, with the old post reset alongside, and the marked stone deposited at base, for 39th mile mon. of bdy. of Luis Maria Baca Float No. 5., with brass cap marked</p> <div style="text-align: center;"> LMBF No.5  <u>39M</u>  PL </div> <p style="text-align: center;">1938</p> <p style="text-align: right;">from which</p> <p>A juniper, 12 ins. diam., bears N. <math>80\frac{3}{4}^{\circ}</math> W., 402 lks. dist., marked LMBF No 5 39M BT.</p> <p>No other bearing tree available.</p> <p>Raise a mound of stone, 2 ft. base, <math>1\frac{1}{2}</math> ft. high, N. of mon.</p> <p>True course and dist. of S. line of bdy. of Luis Maria Baca Float No. 5 from this mon. to the SW. cor. of the grant, are therefore S. <math>87^{\circ} 16'</math> W., 349.95 chs., which, to maintain original proportion of the intervals between the monuments, gives four intervals of 76.17 chs. each, and one interval of 45.27 chs., for reestablishment of missing mons.</p> <p>As the grant bdy. bet. the 39th and 42nd mile mons. does not form a bdy. of the surveys of this group, such portion of the line is not resurveyed, and the missing 40th and 41st mile mons. are not reestablished.</p>
	<p>From the SW. cor. of Luis Maria Baca Float No. 5,  North, on random line.</p>
32.46	<p>Diligent search in this vicinity fails to reveal any trace of the 44th mile mon. Set temp. mon.</p> <p>Thence</p> <p>N. <math>0^{\circ} 09'</math> E. (mean bearing of the Contzen resurvey in 1893), on random line, continuing measurement from SW. cor. of the grant, searching diligently at record intervals for the mile monuments, and setting temp. mons. at such intervals.</p> <p>Fail to find any trace of the 45th and 46th mile mons. and at</p>
272.01	<p>Intersect E. and W. line 9.05 chs. W. of the 47th mile mon.</p> <p>The true courses and distances of the intervals for reestablishment of the missing 44th, 45th and 46th mile mons. on W. line of the bdy. of the Luis Maria Baca Float No. 5, based upon the original survey record bet. the SW.</p>

## Resurvey: Part of boundary: Luis Maria Baca Float No. 5.

5.

Chains	<p>cor. and the 44th mile mon., and the Contzen resurvey record bet. the 44th and 47th mile mons. are therefore:</p> <p>SW. cor. of grant to 44th mile mon.; N. 1°55'E., 32.36 chs., Bet. the 44th and 45th mile mons.; N. 2° 04' E., 80.05 chs., Bet. the 45th and 46th mile mons.; N. 1° 59' E., 79.86 chs., Bet. the 46th and 47th mile mons.; N. 2° 07' E., 79.91 chs.</p>
	<p>From the 47th mile mon.</p> <p>N. 0° 40' E., on random line, for distance only, a flag on the 48th mile mon. being visible on such bearing.</p>
17.12	<p>Intersect the closing cor. of Frac. Ts. 17 and 18 N., R. 9 W.</p> <p>True course and dist. of W. line of the grant bdy. bet. the 47th mile mon. and the closing cor. of Frac. Ts. 17 and 18 N., R. 9 W. are therefore; N. 0°40'E., 17.12 chs.</p>
	<p>RESURVEY.</p> <p>At proportional dist. of 228.51 chs. S. 87° 16' W. from the original 39th mile mon. on S. line of the bdy. of Luis Maria Baca Float No. 5, set an iron post, 3 ft. long; 2 ins. in diam.; 27 ins. in the ground, for re-established 42nd mile mon., with brass cap marked</p> <p style="text-align: center;">LMBF No. 5 42M PL</p> <p style="text-align: center;">1938</p> <p>No bearing trees available.</p> <p>Raise a mound of stone, 3 ft. base, 2 ft. high, N. of cor.</p> <p>Thence</p> <p>S. 87° 16' W., on true line, on S. line of bdy. of Luis Maria Baca Float No. 5.</p> <p>Over mountainous land, thru scattering timber and undergrowth.</p> <p>Desc. 35 ft. over SW. slope.</p> <p>5.50 Bottom of ravine, course S.; asc. 115 ft. over E. slope.</p> <p>18.80 Spur, slopes SE; from N.; desc. gradually over SW. slope to</p> <p>22.80 Rim of canyon, bears N. and SW. Desc. 380 ft. over steep W. slope.</p> <p>39.20 Bottom of Hellzapopin Canyon, containing a stream of water, 1 lk. wide, 1 in. deep, course S. Asc. 785 ft. over steep E. slope to</p> <p>64.90 Rim of canyon, bears N. and S. Leave mountainous and enter gently rolling land. Asc. gradually over E. slope.</p> <p>65.70 Low divide, bears N. and S. Desc. gradually over W. slope to</p>



Resurvey: Part of boundary: Luis Maria Baca Float No. 5.

6.

Chains	
76.17	(Proportional dist.) Set an iron post, 3 ft. long, 12 ins. in the ground to bedrock, over a cross (X) chiseled thereon, and in a mound of stone to top, for reestablished 43rd mile mon., with brass cap marked
	LMBF No 5 43M S24 T17N R9W 1938
	No bearing trees available.
	Land, mountainous and rolling. Soil, rocky, 4th rate. Timber, juniper, sycamore and pinyon. Undergrowth, oakbrush, catclaw and cacti.
	S. 87° 16' W., on true line, on S. line of bdy. of Luis Maria Baca Float No. 5.
	Over gently rolling land, thru scattering timber and undergrowth.
	Desc. 92 ft. over W. slope.
14.73	Bottom of ravine, 8 lks. wide, course SW.; asc. 94 ft. over SE. slope.
24.40	Barbed wire fence, bears N. 86° E. and S. 86° W. This fence is constructed around the Luis Maria Baca Float, near to and in a general way parallel to the surveyed boundary. Along some parts of the grant bdy. the fence was not constructed for the reason that natural barriers were available in lieu of fencing.
28.33	Spur, slopes S.; leave gently rolling and enter mountainous land. Desc. 241 ft. over steep, rocky W. slope.
28.83	Same fence, bears N. 3° W. and S. 3° E. Fence cor. bears S. 3° E., 30 lks. dist. where the fence turns to N. 86° E.
35.83	Bottom of canyon, 20 lks. wide, course S. Joins bottom of Happy Hollow canyon about 6 chs. S. of this point. Asc. 129 ft. over steep, rocky E. slope.
40.53	Top of ascent. Thence across point of spur sloping SE.
43.53	Leave point of spur. Desc. 52 ft. over steep SW. slope to
45.27	Intersect the SW. cor. of Luis Maria Baca Float No. 5, which is a volcanic boulder in place, exposed 6x3x3 ft. above ground, marked VI No 5 SWC on E. face and witnessed by a mound of stone N. No bearing trees. This being a good durable stone and properly marked, no change or reconstruction in the cor. monument is required.
	This cor. is on left bank of wash, 15 lks. wide, course SE. in bottom of Happy Hollow Canyon.
	Thence
	N. 1° 55' E., on true line, on W. line of bdy. of Luis Maria Baca Float No. 5.
	Over mountainous land, in Happy Hollow Canyon, thru

Resurvey: Part of boundary: Luis Maria Baca Float No. 5.

7.

Chains	scattering timber and undergrowth.								
	Asc. 101 ft. over steep, rocky SW. slope to								
4.08	Left rim of canyon, bears NW. and SE. Leave canyon and enter heavily rolling land. Asc. 62 ft. over SW. slope.								
11.00	Spur, slopes S. 10° E.; asc. 110 ft. over E. slope to								
32.36	(Proportional dist., and 77.63 chs. from the reestablished 43rd mile mon. along the bdy. of the grant.) Set an iron post, 3 ft. long, 2 ins. in diam., 27 ins. in the ground, for reestablished 44th mile mon. on the bdy. of Luis Maria Baca Float No. 5, with brass cap marked								
	<table><tr><td>T17N</td><td>LM</td></tr><tr><td>R9W</td><td>BF</td></tr><tr><td>S23</td><td>No. 5</td></tr><tr><td></td><td>44M</td></tr></table>	T17N	LM	R9W	BF	S23	No. 5		44M
T17N	LM								
R9W	BF								
S23	No. 5								
	44M								
	1938								
	No bearing trees available.								
	Raise a mound of stone, 3½ ft. base, 2 ft. high, E. of cor.								
	Land, gently and heavily rolling, and mountainous. Soil, gravelly and rocky, 2nd, 3rd and 4th rates. Timber, juniper. Undergrowth, oakbrush, catclaw and cacti. Fair grass.								
	From reestablished 44th mile mon.,								
	N. 2° 04' E., on true line, on W. line of bdy. of Luis Maria Baca Float No. 5.								
	Over heavily rolling land, thru scattering timber and undergrowth.								
	Asc. 156 ft. over E. slope.								
31.91	Rim of ravine, bears NW. and SE.; desc. 148 ft. over NE. slope.								
49.35	Wash, 8 lks. wide, course SE. in bottom of ravine; asc. 127 ft. over SW. slope.								
59.17	Asc. 92 ft. over W. slope to								
80.05	(Proportional dist.) Set an iron post, 3 ft. long, 2 ins. in diam., 27 ins. in the ground, for reestablished 45th mile mon. on the bdy. of the Luis Maria Baca Float No. 5, with brass cap marked								
	<table><tr><td>T17N</td><td>LM</td></tr><tr><td>R9W</td><td>BF</td></tr><tr><td>S14</td><td>No. 5</td></tr><tr><td></td><td>45M</td></tr></table>	T17N	LM	R9W	BF	S14	No. 5		45M
T17N	LM								
R9W	BF								
S14	No. 5								
	45M								
	1938								
	No bearing trees available.								
	Raise a mound of stone, 3 ft. base, 2 ft. high, E. of cor.								

## Resurvey: Part of boundary: Luis Maria Baca Float No. 5.

8.

Chains									
	<p>Land, heavily rolling. Soil, gravelly and rocky, 2nd, 3rd and 4th rates. Timber, juniper. Undergrowth, oakbrush, catclaw and cacti.</p>								
	<p>From 45th mile mon., N. 1° 59' E., on true line, on W. line of bdy. of Luis Maria Baca Float No. 5.</p>								
	<p>Over mountainous land; thru scattering timber and undergrowth. Asc. 232 ft. over steep W. and SW. slopes.</p>								
28.52	Point of spur, slopes W.; thence over heavily rolling land. Desc. 50 ft. over NW. slope.								
33.20	Bottom of draw, 3 lks. wide, course SW., joined at 80 lks. SW. of this point by another draw from N. Asc. 60 ft. over SW. slope.								
41.74	Asc. 70 ft. over W. slope.								
57.20	Asc. 131 ft. over SW. slope.								
75.00	Spur ridge, bears NW. and SE., sloping SE. Asc. gradually over E. slope to								
79.86	(Proportional dist.) Set an iron post, 3 ft. long, 2 ins. in diam., 12 ins. in the ground to bedrock, and in a mound of stone to top, for reestablished 46th mile mon. of bdy. of Luis Maria Baca Float No. 5, with brass cap marked								
	<div style="text-align: center;"> <table> <tr><td>T17N</td><td>LM</td></tr> <tr><td>R9W</td><td>BF</td></tr> <tr><td>311.</td><td>No 5.</td></tr> <tr><td></td><td>46M</td></tr> </table> </div>	T17N	LM	R9W	BF	311.	No 5.		46M
T17N	LM								
R9W	BF								
311.	No 5.								
	46M								
	<div style="text-align: center;">1938</div> <div style="text-align: right;">from which</div>								
	<p>A juniper, 5 ins. diam., bears N. 41° E., 124 lks. dist., marked LMBF No 5 46M BT.</p>								
	<p>An oak, 9 ins. diam., bears S. 32° E., 198 lks. dist., marked LMBF No 5 46M BT.</p>								
	<p>Land, mountainous and heavily rolling. Soil, gravelly and rocky, 2nd, 3rd and 4th rates. Timber, juniper and oak. Undergrowth, oakbrush and cacti.</p>								
	<p>From 46th mile mon., N. 2° 07' E., on true line, on W. line of bdy. of Luis Maria Baca Float No. 5.</p>								
	<p>Over rolling land, thru scattering timber and undergrowth. Desc. 65 ft. over NE. slope.</p>								
14.45	Wash, 10 lks. wide, course SE.; asc. 167 ft. over SW. slope.								
51.00	Spur, slopes SE.; ascend gradually over E. slope.								

Resurvey: Part of boundary: Luis Maria Baca Float No. 5.

9.

Chains	
60.91	Asc. 20 ft. over SE. slope.
67.00	Low spur, slopes SE. from W.; desc. 40 ft. over N. slope to 47th mile mon.
74.52	Barbed wire fence ( L.M.B.F. No. 5 fence) bears N. and S.
79.91	<p>Intersect the original 47th mile mon., which is a volcanic stone 8x12x12 ins. above ground, firmly set and marked 47M on S. face.</p> <p>Reconstruct this mile mon. as follows: Remove the marked stone, and in same place set an iron post, 3 ft. long, 2 ins. in diam., 27 ins. in the ground, with the old stone reset alongside, for the 47th mile mon. of boundary of Luis Maria Baca Float No. 5, with brass cap marked</p> <div><div>T17N R9W S2</div><div>LM BF No 5 47M</div></div> <p>1938</p> <p>from which</p> <p>An oak, 10 ins. diam., bears N. 74° E., 205 lks. dist., marked LMBF No 5 47M BT.</p> <p>An oak, 10 ins. diam., bears S. 65½° E., 122 lks. dist., marked LMBF No. 5 47M BT.</p> <p>Land, rolling. Soil, gravelly and rocky, 2nd, 3rd and 4th rates. Timber, juniper and oak. Undergrowth, oakbrush and buckbrush.</p>
	<p>From 47th mile mon.,</p> <p>N. 0° 40' E., on true line on part of 48th mile of bdy. of Luis Maria Baca Float No. 5.</p> <p>Over gently rolling land, thru scattering timber and undergrowth.</p> <p>Desc. 12 ft. over N. slope.</p>
4.20	Draw, 10 lks. wide, course E., near head. Asc. 45 ft. over SE. slope to
17.12	<p>Intersect the closing cor. of Frac. Ts. 17 and 18 N., R. 9 W., which is a limestone 6x10x6 ins. above ground, firmly set, marked CC on W. face, and LMB No 5 on E. face, and witnessed by a small mound of stone W.</p> <p>Reconstruct this cor. monument as follows: Remove the marked stone, and in same place set an iron post, 3 ft. long, 3 ins. in diam., 28 ins. in the ground, with the old stone reset alongside, for closing cor. of Frac. Ts. 17 and 18 N., R. 9 W., with brass cap marked</p> <div><div>CC</div><div><div>T18N R9W S36 S2 T17N</div><div>LM BF No 5</div></div></div> <p>1938</p> <p>from which</p>

Resurvey: Part of boundary: Luis Maria Baca Float No. 5.

10

Chains

A juniper, 6 ins. diam., bears S.  $80\frac{1}{2}^{\circ}$  W., 185 lks.  
dist., marked T17N R9W S2 CC BT,

A juniper, 5 ins. diam., bears N.  $80\frac{1}{4}^{\circ}$  W., 206 lks.  
dist., marked T18N R9W S36 CC BT.

Land, gently rolling.  
Soil, gravelly and rocky, 2nd and 3rd rates.  
Timber, juniper and oak.  
Undergrowth, oakbrush and buckbrush.

Retracement and Resurvey: South bdy.: Frac. T. 18 N., R. 9 W.  
and Resurvey: North bdy.: Frac. T. 17 N., R. 9 W.

11

## Chains

The South boundary of Frac. T. 18 N., R. 9 W. was surveyed by P. Contzen, U.S. Deputy Surveyor in 1893, establishing all cors. thereon with common reference to areas in Ts. 17 and 18 N., R. 9 W., and in connection with said survey established the cor. of Ts. 17 and 18 N., Rs. 9 and 10 W., and the closing cor. of Frac. Ts. 17 and 18 N., R. 9 W. on the bdy. of the Luis Maria Baca Float No. 5 private land grant.

The E.  $\frac{1}{2}$  of the line bet. secs. 5 and 32 was retraced, and the West  $1\frac{1}{2}$  miles of the Tp. bdy. were resurveyed, by H. D. Jackson, U. S. Transitman, in 1916, reestablishing the missing cors. at proportional intervals, bet. the original  $\frac{1}{4}$  sec. cor. of secs. 5 and 32, and the cor. of Ts. 17 and 18 N., Rs. 9 and 10 W., monumenting said reestablished cors. with stones, explained by the statement "no iron post available", and changing the reference of such cors. to areas in Frac. T. 18 N., R. 9 W. only. Transitman Jackson made no physical change in the original monuments at the Tp. cor.; the  $\frac{1}{4}$  sec. cor. of secs. 5 and 32, and the cor. of secs. 4, 5, 32 and 33, but stated that said  $\frac{1}{4}$  sec. cor. "now refers to sec. 32 only".

No other retracement or resurvey of any part of this Tp. bdy. is of record.

The following notes describe a retracement and resurvey of the S. bdy. of Frac. T. 18 N., R. 9 W. in those portions situated on the south of W.  $\frac{1}{2}$  of sec. 31, and south of secs. 32, 33, 34, 35 and frac. sec. 36, and retracement only in that portion South of E.  $\frac{1}{2}$  of sec. 31.

In this resurvey the original cor. of Ts. 17 and 18 N., Rs. 9 and 10 W. is changed to refer to Frac. T. 18 N., R. 9 W., and T. 18 N., R. 10 W. only, but is not reconstructed with a brass-capped iron post. The original cor. of secs. 4, 5, 32 and 33 and all original  $\frac{1}{4}$  sec. and sec. cors. easterly therefrom are found in the retracement, and in the resurvey all of said sec. and  $\frac{1}{4}$  sec. cors. are reconstructed in original positions, monumenting them with regulation brass-capped iron posts, with references changed to areas in Frac. T. 18 N., R. 9 W. only.

No change in reference is required for the previously reestablished cor. of secs. 31 and 32, or the S.  $\frac{1}{4}$  sec. cors. of secs. 31 and 32, and two of these cor. monuments being found to be good durable stones, properly marked and witnessed, they were not disturbed. The S.  $\frac{1}{4}$  sec. cor. of sec. 32, however, was reconstructed with a brass-capped iron post.

The following notes also describe a resurvey of the North bdy. of Frac. T. 17 N., R. 9 W., which is accomplished by the establishment on the S. bdy. of Frac. T. 18 N., R. 9 W., of the closing cor. of Frac. Ts. 17 N., Rs. 9 and 9  $\frac{1}{2}$  W. and all subdivisional closing cors. of Frac. T. 17 N., R. 9 W., easterly therefrom; and the reestablishment of the N.  $\frac{1}{4}$  sec. cors. of secs. 3, 4, and 5 at midpoints bet. the closing cors., and the N.  $\frac{1}{4}$  sec. cors. of secs. 2 and 6 at 40.00 chs. easterly and westerly, respectively, from the closing cor. of secs. 2 and 3, and the closing cor. of secs. 5 and 6.

Retracement and Resurvey: South bdy.: Frac. T. 18 N., R. 9 W.  
and Resurvey: North bdy.: Frac. T. 17 N., R. 9 W.

12

RETRACEMENT FOR RESURVEYS.

Chains

From closing cor: of Frac. Ts. 17 and 18 N., R. 9 W., on the 48th mile of the bdy. of the Luis Maria Baca Float No. 5,

West, on random line, S. of frac. sec. 36.

13.59 A point 11 lks. S. of original cor. of secs. 1, 2, 35 and 36.

True course and dist. of S. bdy. of frac: sec. 36, are therefore; N. 89° 32' W., 13.59 chs.

West, on random line; S. of sec. 35 (E.  $\frac{1}{2}$ ).

39.85 A point 15 lks. S. of original  $\frac{1}{4}$  sec. cor. of secs. 2 and 35.

True course and dist. of E.  $\frac{1}{2}$  of S. bdy. of sec. 35 are therefore; N. 89° 47' W., 39.85 chs.

Thence

West, on random line, S. of sec. 35 (W.  $\frac{1}{2}$ ).

40.10 A point 17 lks. S. of the original cor. of secs. 2, 3, 34 and 35.

True course and dist. of W.  $\frac{1}{2}$  of S. bdy. of sec. 35 are therefore, N. 89° 45' W., 40.10 chs.

West, on random line, S. of sec. 34 (E.  $\frac{1}{2}$ ).

39.23 A point 79 lks. N. of original  $\frac{1}{4}$  sec. cor. of secs. 3 and 34.

True course and dist. of E.  $\frac{1}{2}$  of S. bdy. of sec. 34 are therefore, S. 88° 51' W., 39.24 chs.

Thence

West, on random line, S. of sec. 34 (W.  $\frac{1}{2}$ ).

40.01 A point 22 lks. N. of original cor. of secs. 3, 4, 33 and 34.

True course and dist. of W.  $\frac{1}{2}$  of S. bdy. of sec. 34 are therefore, S. 89° 41' W., 40.01 chs.

West, on random line, S. of sec. 33 (E.  $\frac{1}{2}$ ).

39.87 A point 23 lks. N. of original  $\frac{1}{4}$  sec. cor. of secs. 4 and 33.

True course and dist. of E.  $\frac{1}{2}$  of S. bdy. of sec. 33 are therefore, S. 89° 40' W., 39.87 chs.

Thence

West, on random line, S. of sec. 33 (W.  $\frac{1}{2}$ ).

39.78 A point 6 lks. N. of original cor. of secs. 4, 5, 32 and 33.

True course and dist. of W.  $\frac{1}{2}$  of S. bdy. of sec. 33 are therefore, S. 89° 54' W., 39.78 chs.

Retracement and Resurvey: South bdy.: Frac. T. 18 N., R. 9 W.  
 and Resurvey: North bdy.: Frac. T. 17 N., R. 9 W.

Chains	N. 89° 52' W. (1916 retracement record) on random line, S. of sec. 32 (E. $\frac{1}{2}$ ).
39.74	Intersect the original $\frac{1}{4}$ sec. cor. of secs. 5 and 32 (reference changed in 1916 to $\frac{1}{4}$ sec. cor. of sec. 32 only).  True course and dist. of E. $\frac{1}{2}$ of S. bdy. of sec. 32 are therefore, N. 89° 52' W., 39.74 chs., which agrees with the official record of the 1916 retracement.  Thence  N. 89° 51' W. (1916 resurvey record) on random line, S. of sec. 32 (W. $\frac{1}{2}$ ).
38.91	Intersect the previously reestablished cor. of secs. 31 and 32.  True course and dist. of W. $\frac{1}{2}$ of S. bdy. of sec. 32 are therefore, N. 89° 51' W., 38.91 chs., which agrees with the official record of the 1916 resurvey.
	N. 89° 51' W., (1916 resurvey record) on random line, S. of sec. 31 (E. $\frac{1}{2}$ ).
37.92	A point 55 lks. N. of the previously reestablished S. $\frac{1}{4}$ sec. cor. of sec. 31.  True course and dist. of E. $\frac{1}{2}$ of S. bdy. of sec. 31 are therefore, S. 89° 19' W., 37.92 chs.  Thence  N. 89° 51' W. (1916 resurvey record) on random line, S. of sec. 31 (W. $\frac{1}{2}$ ).
39.46	A point 60 lks. S. of the original cor. of Ts. 17 and 18 N., Rs. 9 and 10 W.  True course and dist. of W. $\frac{1}{2}$ of S. bdy. of sec. 31 are therefore, N. 88° 59' W., 39.47 chs.
<u>RESURVEYS.</u>	
	N. 89° 32' W., on true line, on S. bdy. of frac. sec. 36, Over gently rolling land, thru scattering timber and undergrowth. Asc. gradually over SE. slope.
0.41	Barbed wire fence (LMBF No. 5 fence), bears N. and S.
8.00	Top of ascent, bears N. and S.; desc. gradually over SW. slope to
13.59	Intersect the original cor. of secs. 1, 2, 35 and 36, which is a malpais stone, 14x8x5 ins. above ground, firmly set, marked with 5 notches on W. face and 1 notch on E. face, and witnessed by a mound of stone N. Reconstruct this cor. monument with altered reference as follows: Remove the marked stone, and in same place set an iron post, 3 ft. long, 2 ins. in diam., 27 ins. in the ground, with the old cor. stone reset alongside, for cor. of sec. 35 and frac. sec. 36, Frac. T. 18 N., R. 9 W., with brass cap marked



Retracement and Resurvey: South bdy.: Frac. T. 18 N., R. 9 W.  
and Resurvey: North bdy.: Frac. T. 17 N., R. 9 W.

14

Chains

T18N R9W  
S35 S36

S2

T17N R9W

1938

from which

A juniper, 6 ins. diam., bears N. 50° E., 48 lks.  
dist., marked T18N R9W S36 BT.

A juniper, 6 ins. diam., bears N. 47° W., 66 lks.  
dist., marked T18N R9W S35 BT.

Land, gently rolling.

Soil, gravelly and rocky clay, 2nd and 3rd rates.

Timber, juniper and oak.

Undergrowth, oakbrush, buckbrush and cacti.

From cor. of sec. 35 and frac. sec. 36,

N. 89° 47' W., on true line, on S. bdy. of sec. 35 (E.  $\frac{1}{2}$ ).

Over gently rolling land, thru scattering timber and  
undergrowth.

Desc. 37 ft. over SW. slope to

11.06

(40.00 chs. easterly from closing cor. of secs. 2 and 3)  
Set an iron post, 3 ft. long, 1 in. in diam., 27 ins. in  
the ground, for reestablished N.  $\frac{1}{4}$  sec. cor. of sec. 2,  
Frac. T. 17 N., R. 9 W., with brass cap marked

 $\frac{1}{4}$  S 2

1938

from which

A juniper fork, 8 ins. diam., bears S. 80° E., 15 lks.  
dist., marked  $\frac{1}{4}$  S2 BT.

A juniper fork, 6 ins. diam., bears S. 65 $\frac{1}{2}$ ° W., 61  
lks. dist., marked  $\frac{1}{4}$  S2 BT.

Desc. 27 ft. over gradual SW. slope to

17.65

Enter heavily rolling land. Desc. 109 ft. over steep SW.  
slope.

26.64

Bottom of draw, course NW. Enter rolling land. Asc. 138  
ft. over gradual NE. slope to

39.85

Intersect the original  $\frac{1}{4}$  sec. cor. of secs. 2 and 35,  
which is a limestone 10x8x4 ins. above ground, firmly  
set, marked  $\frac{1}{4}$  on N. face and witnessed by a mound of  
stone N.

Reconstruct this cor. monument with altered reference  
as follows:

Remove the marked stone, and in same place set an iron  
post, 3 ft. long, 1 in. in diam., 27 ins. in the  
ground, with the old cor. stone reset alongside, for  
S.  $\frac{1}{4}$  sec. cor. of sec. 35, with brass cap marked

 $\frac{1}{4}$  S35

1938

from which

Retracement and Resurvey: South bdy.: Frac. T. 18 N., R. 9 W.  
 and Resurvey: North bdy.: Frac. T. 17 N., R. 9 W.

15

## Chains

A white oak, 8 ins. diam., bears N. 42° E., 76 lks. dist., marked  $\frac{1}{4}$  S35 BT.

A juniper, 5 ins. diam., bears N. 39½° W., 115 lks. dist., marked  $\frac{1}{4}$  S35 BT.

Thence

N. 89° 45' W., on true line, on S. bdy. of sec. 35 (W.½)

Over gently rolling land, thru scattering timber and undergrowth.

Asc. slightly over NE. slope.

1.24 Low ridge, bears NW. and SE.; desc. 52 ft. over very gradual SW. slope to

11.21 Intersect the subdivision line bet. secs. 2 and 3, Frac. T. 17 N., R. 9 W., (Sectional Guide Meridian) surveyed due North.

Closing cor. of said secs. established at this point as hereinafter described.

Desc. 12 ft. over SW. slope.

16.30 Thence over gently rolling S. slope with slight changes in elevation.

40.10 Intersect the original cor. of secs. 2, 3, 34 and 35, which is a malapais stone, 8x10x6 ins. above ground, firmly set, marked with 2 notches on E. face, and 4 notches on W. face, and witnessed by a mound of stone N.

Reconstruct this cor. monument with altered reference as follows:

Remove the marked stone, and in same place set an iron post, 3 ft. long, 2 ins. in diam., 12 ins. in the ground to bedrock, with old cor. stone reset alongside, and in a mound of stone to top, for cor. of secs. 34 and 35, Frac. T. 18 N., R. 9 W., with brass cap marked

T18N R9W

S34 | S35

S3

T17N R9W

1938

No bearing trees available.

Land, gently to heavily rolling.  
 Soil, gravelly and rocky clay, 3rd and 4th rates.  
 Timber, juniper and oak.  
 Undergrowth, oakbrush.

From cor. of secs. 34 and 35,

S. 88° 51' W., on true line, on S. bdy. of sec. 34 (E.½).

Over gently rolling land, thru scattering timber and undergrowth.

Desc. 23 ft. over S. slope.

10.00 Enter heavily rolling land. Desc. 16 ft. over SW. slope to

11.11 (Midpoint of N. bdy. of sec. 3, which is 40.00 chs. westerly from the closing cor. of secs. 2 and 3)

Retracement and Resurvey: South bdy.: Frac. T. 18 N., R. 9 W.  
 and Resurvey: North bdy.: Frac. T. 17 N., R. 9 W.

16

## Chains

Set an iron post, 3 ft. long, 1 in. in diam., 16 ins. in the ground to bedrock, with a stone marked with a cross (X) deposited at base, and in a mound of stone to top, for reestablished N.  $\frac{1}{4}$  sec. cor. of sec. 3, Frac. T. 17 N., R. 9 W., with brass cap marked

 $\frac{1}{4}$  S3

1938

No bearing trees available.

Desc. 69 ft. over SW. slope.

21.05 Thence along S. slope, descending gradually to

29.85 Spur, slopes SW.; desc. 109 ft. over N. and NW. slopes to

39.24 Intersect the original  $\frac{1}{4}$  sec. cor. of secs. 3 and 34, which is a malpais stone 8x12x6 ins. above ground, firmly set marked  $\frac{1}{4}$  on N. face, and witnessed by a mound of stone N.  
 Reconstruct this cor. monument with altered reference as follows:  
 Remove the marked stone, and in same place set an iron post, 3 ft. long, 1 in. in diam., 27 ins. in the ground, with the old cor. stone reset alongside, for S.  $\frac{1}{4}$  sec. cor. of sec. 34, with brass cap marked

 $\frac{1}{4}$  S34

1938

from which

A white oak, 7 ins. diam., bears N.  $46\frac{1}{4}^{\circ}$  E., 61 lks. dist., marked  $\frac{1}{4}$  S34 BT.

A juniper fork, 8 ins. diam., bears N.  $39^{\circ}$  W., 76 lks. dist., marked  $\frac{1}{4}$  S34 BT.

Thence

S.  $89^{\circ} 41'$  W., on true line, on S. bdy. of sec. 34 (W.  $\frac{1}{2}$ ).

Over gently rolling land, thru scattering timber and undergrowth.

Desc. 23 ft. over gradual NW. slope.

4.50 Bear Creek (dry) 20 lks. wide, course N. from S.  $60^{\circ}$  E., and turning to N.  $70^{\circ}$  W. at 1.30 chs. N. of this point.  
 A draw from N.  $50^{\circ}$  E. joins Bear Creek here.

Asc. 15 ft. over NE. slope to

11.87 (80.00 chs. westerly from closing cor. of secs. 2 and 3)  
 Intersect the subdivision line bet. secs. 3 and 4, Frac. T. 17 N., R. 9 W., surveyed N.  $0^{\circ} 01'$  W.  
 Closing cor. of said secs. established at this point as hereinafter described.

Asc. 42 ft. over NE. slope to

13.82 Thence over broken N. slope. Desc. 43 ft.

28.00 Continue over broken N. slope, descending 44 ft. to

40.01 Intersect the original cor. of secs. 3, 4, 33 and 34, which is a malpais stone 6x10x6 ins. above ground,

Retracement and Resurvey; South bdy.: Frac. T. 18 N., R. 9 W.  
and Resurvey; North bdy.: Frac. T. 17 N., R. 9 W.

17

Chains

firmly set, marked with 3 notches on each of E. and W. faces, and witnessed by a mound of stone N. Reconstruct this cor. monument with altered reference as follows:  
Remove the marked stone, and in same place set an iron post, 3 ft. long, 2 ins. in diam., 27 ins. in the ground, with the old cor. stone reset alongside, for cor. of secs. 33 and 34, Frac. T. 18 N., R. 9 W., with brass cap marked

T18N R9W  
S33 | S34  
S4  
T17N R9W

1938

from which

A white oak, 6 ins. diam., bears N. 46° E., 67 lks. dist., marked T18N R9W S34 BT.

A white oak, 6 ins. diam., bears N. 10° W., 50 lks. dist., marked T18N R9W S33 BT.

Land, gently to heavily rolling.  
Soil, gravelly and rocky, 3rd and 4th rates.  
Timber, juniper and white oak.  
Undergrowth, oakbrush.

From cor. of secs. 33 and 34,  
S. 89° 40' W., on true line, on S. bdy. of sec. 33 (E. 1/2).  
Over rolling land, thru scattering timber and undergrowth.  
Desc. 35 ft. over broken N. slope to

11.95 (Midpoint of N. bdy. of sec. 4, which is 40.09 chs. westerly from closing cor. of secs. 3 and 4) Set an iron post, 3 ft. long, 1 in. in diam., 25 ins. in the ground to bedrock, and in a mound of stone to top, for reestablished N. 1/4 sec. cor. of sec. 4, Frac. T. 17 N., R. 9 W., with brass cap marked

1/4 S4

1938

from which

A white oak, 7 ins. diam., bears S. 89° E., 53 lks. dist., marked 1/4 S4 BT.

A white oak, 4 ins. diam., bears S. 21 1/2° E., 45 lks. dist., marked 1/4 S4 BT.

Desc. 69 ft. over broken N. slope to

23.00 Bear Creek (dry) 20 lks. wide, course S. 70° W.; asc. 62 ft. over SE. slope.

33.06 Desc. 53 ft. along rolling S. slope to

39.87 Intersect the original 1/4 sec. cor. of secs. 4 and 33, which is a limestone 6x10x4 ins. above ground, firmly set, marked 1/4 on N. face and witnessed by a mound of stone N. Reconstruct this cor. monument with altered reference as follows:

Retracement and Resurvey: South bdy.: Frac. T. 18 N., R. 9 W.  
and Resurvey: North bdy.: Frac. T. 17 N., R. 9 W.

18

## Chains

Remove the marked stone, and in same place set an iron post, 3 ft. long, 1 in. in diam., 27 ins. in the ground, with old cor. stone reset alongside, for S.  $\frac{1}{4}$  sec. cor. of sec. 33, with brass cap marked

$\frac{1}{4}$  S33

1938

from which

A juniper, 10 ins. diam., bears N.  $54^{\circ}$  E., 142 lks. dist., marked  $\frac{1}{4}$  S33 BT.

No other bearing tree available.

Thence

S.  $89^{\circ} 54'$  W., on true line, on S. bdy. of sec. 33 (W.  $\frac{1}{2}$ ).

Over rolling and broken land, thru scattering timber and dense undergrowth.

Asc. 23 ft. over S. slope.

3.91 Desc. 6 ft. over S. slope.

8.90 Asc. 14 ft. over S. slope to

12.17 (80.18 chs. westerly from closing cor. of secs. 3 and 4) Intersect the subdivision line bet. secs. 4 and 5, Frac. T. 17 N., R. 9 W., surveyed N.  $0^{\circ} 01'$  W. Closing cor. of said secs. established at this point as hereinafter described.

Asc. 44 ft. over S. slope.

16.74 Desc. 110 ft. over SW. slope.

30.00 Draw, course S.; asc. 38 ft. over gradual SE. slope to

39.78 Intersect the original cor. of secs. 4, 5, 32 and 33, which is a malpais stone 6x10x4 ins. above ground, firmly set, marked with 4 notches on E. face and 2 notches on W. face, and witnessed by a mound of stone N. Reconstruct this cor. monument with altered reference as follows:  
Remove the marked stone, and in same place, set an iron post, 3 ft. long, 2 ins. in diam., 27 ins. in the ground for cor. of secs. 32 and 33, Frac. T. 18 N., R. 9 W., with brass cap marked

T18N R9W

S32 | S33

S 5

T17N R9W

1938

from which

A juniper, 6 ins. diam., bears N.  $55\frac{1}{2}^{\circ}$  E., 139 lks. dist., marked T18N R9W S33 BT.

A juniper, 8 ins. diam., bears N.  $11\frac{1}{2}^{\circ}$  W., 149 lks. dist., marked T18N R9W S32 BT.

Land, rolling and broken.

Soil, gravelly and rocky clay, 3rd and 4th rates.

Timber, juniper and oak.

Undergrowth, oakbrush.

Retracement and Resurvey: South bdy.: Frac. T. 18 N., R. 9 W.  
 and Resurvey: North bdy.: Frac. T. 17 N., R. 9 W.

19

Chains	
	From cor. of secs. 32 and 33, N. $89^{\circ} 52'$ W., on true line, on S. bdy. of sec. 32 ( $E.\frac{1}{2}$ ). Over rolling land, thru scattering timber and dense undergrowth. Asc. 65 ft. over SE. slope.
4.90	Barbed wire fence, bears N. $23^{\circ}$ W. and S. $23^{\circ}$ E. Gate in same bears NW. 1.00 ch. dist., thru which a road bears N. $70^{\circ}$ E. and S. $70^{\circ}$ W. The fence extends SE. about 40 chs. dist. and then turns to SW. The road extends northeasterly to Seligman, and southwesterly to the Bear Creek Ranch in SW $\frac{1}{4}$ of sec. 5, Frac. T. 17 N., R. 9 W.
6.65	Same road, bears NE. and SW.
11.55	Ridge, bears NE. and SW.; desc. slightly over NW. slope to
12.60	(Midpoint of N. bdy. of sec. 5, which is 40.21 chs. westerly from the closing cor. of secs. 4 and 5) Set an iron post, 3 ft. long, 1 in. in diam., 6 ins. in the ground to bedrock, with a stone marked with a cross (X) deposited at base, and in a mound of stone to top, for reestablished N. $\frac{1}{4}$ sec. cor. of sec. 5, Frac. T. 17 N., R. 9 W., with brass cap marked
	<u><math>\frac{1}{4}</math> S5</u> 1938
	No bearing trees available. Enter heavily rolling land. Desc. 200 ft. over NW. slope.
37.65	Bottom of draw,, course NE.; asc. 16 ft. over E. slope to
39.74	Intersect the S. $\frac{1}{4}$ sec. cor. of sec. 32, which is a malpais stone 10x8x6 ins. above ground, firmly set, marked $\frac{1}{4}$ on N. face, and witnessed by a mound of stone N. Reconstruct this cor. monument as follows: Remove the marked stone, and in same place set an iron post, 3 ft. long, 1 in. in diam., 28 ins. in the ground, with the old cor. stone reset alongside, for S. $\frac{1}{4}$ sec. cor. of sec. 32, with brass cap marked
	<u><math>\frac{1}{4}</math> S32</u> 1938
	No bearing trees available.
	Thence N. $89^{\circ} 51'$ W., on true line, on S. bdy. of sec. 32 ( $W.\frac{1}{2}$ ). Over gently rolling land, thru scattering timber and undergrowth. Asc. 50 ft. over E. slope to closing cor. of secs. 5 and 6.
7.50	Barbed wire fence, bears NW. and SE.
13.06	(80.41 chs. westerly from the closing cor. of secs. 4 and 5) Intersect the subdivision line bet. secs. 5 and 6, Frac. T. 17 N., R. 9 W., surveyed N. $0^{\circ} 02'$ W. Closing

Retracement and Resurvey: South bdy.: Frac. T. 18 N., R. 9 W.  
and Resurvey: North bdy.: Frac. T. 17 N., R. 9 W.

20

Chains	cor. of said secs. established at this point as hereinafter described.
	Asc. 20 ft. over E. slope.
17.65	Ridge, bears N. and S.; enter heavily rolling land. Desc. 125 ft. over W. slope to
34.80	Top of cliff, 30 ft. high, bearing NE. and SW. Enter mountainous land. Desc. 200 ft. over steep broken NW. slope to
38.91	Intersect the previously reestablished cor. of secs. 31 and 32, which is a malpais boulder, in place, exposed 8x6x2 ft. above ground, marked with a cross (X) on top, 5 notches E. and 1 notch W. of cross, and witnessed by a mound of stone N. No bearing trees.
	Land, rolling, broken and mountainous. Soil, gravelly and rocky, 3rd and 4th rates. Timber, pinyon and juniper.. Undergrowth, oakbrush.
	From cor. of secs. 31 and 32, S. 89° 19' W., on true line, on S. bdy. of sec. 31 (E. $\frac{1}{2}$ ). Over mountainous land, thru scattering timber and undergrowth. Desc. 560 ft. over steep broken NW. slope to Adobe Creek.
14.15	(40.00 chs. westerly from closing cor. of secs. 5 and 6) Set an iron post, 3 ft. long, 1 in. in diam., 10 ins. in the ground to bedrock, with a stone marked with a cross (X) deposited at base, and in a mound of stone to top, for reestablished N. $\frac{1}{4}$ sec. cor. of sec. 6, Frac. T. 17 N., R. 9 W., with brass cap marked
	$\frac{1}{4}$ S 6 1938 No bearing trees available.
15.60	Barbed wire fence, bears NW. and SE.
34.65	Adobe Creek, 60 lks. wide, course SW.; containing a stream of water, 20 lks. wide, 10 ins. deep. Asc. 60 ft. over E. slope to
37.92	Intersect the previously reestablished S. $\frac{1}{4}$ sec. cor. of sec. 31, which is a sandstone 8x10x5 ins. above ground, firmly set, marked $\frac{1}{4}$ on N. face, and witnessed by a mound of stone N. No bearing trees. Thence N. 88° 59' W., on true line, on S. bdy. of sec. 31 (W. $\frac{1}{2}$ ). Over mountainous land, thru scattering timber and undergrowth. Asc. 240 ft. over E. slope.
11.00	Spur, slopes SE.; desc. 35 ft. over SW. slope to

Retracement and Resurvey: South bdy.: Frac. T. 18 N., R. 9 W.  
 and Resurvey: North bdy.: Frac. T. 17 N., R. 9 W.

Chains	
15.98	(79.75 chs. westerly from the closing cor. of secs. 5 and 6) Intersect the West bdy. of Frac. T. 17 N., R. 9 W., resurveyed due North: Closing cor. of Frac. Ts. 17 N., Rs. 9 and 9 $\frac{1}{2}$ W. established at this point as hereinafter described.  The resurvey of North bdy. of Frac. T. 17 N., R. 9 W. terminates at this closing cor.  Continue line and measurement, and resurvey of W. $\frac{1}{2}$ of S. bdy. of sec. 31, Frac. T. 18 N., R. 9 W.  Desc. 25 ft. over SW. slope.
17.38	Bottom of ravine, course SE.; asc. 140 ft. over E. slope.
31.93	Spur, slopes SE.; desc. 50 ft. over SW. slope.
33.24	Bottom of ravine, course SE.; asc. 65 ft. over NE. slope to
39.47	(23.49 chs. N. 88° 59' W. from closing cor. of Frac. Ts. 17 N., Rs. 9 and 9 $\frac{1}{2}$ W.) Intersect the original cor. of Frac. Ts. 17 and 18 N., R. 9 W., and Ts. 17 and 18 N., R. 10 W., which is a malpais stone 6x10x5 ins. above ground, firmly set; marked with 6 notches on each of E., W., N. and S. faces, and witnessed by a mound of stone S., and two properly marked juniper bearing trees, one N. 24° E., 173 lks. dist., and the other N. 1 $\frac{1}{2}$ ° W., 190 lks. dist. Alter this cor. monument to refer to Frac. T. 18 N., R. 9 W. and T. 18 N., R. 10 W. only by obliterating the notches on S. face of stone, destroying the mound of stone S. of cor., and raising a mound of stone 3 ft. base; 2 ft. high, N. of cor.  Land, mountainous. Soil, rocky, 4th rate. Timber, juniper and pinyon. Undergrowth, oakbrush.



Survey: East boundary: Frac. T. 17 N., R. 9 W.

22

## Chains

The following notes describe the survey of the East bdy. of Frac. T. 17 N., R. 9 W., due North from the std. cor. of Frac. Ts. 17 N., Rs. 8 and 9 W. to point of intersection with the S. line of the bdy. of the Luis Maria Baca Float No. 5 private land grant, where closing cor. of said frac. Tps. is established; thence westerly along S. line of the grant bdy. to the SW. cor. of the grant; thence northerly along the W. line of the grant bdy. to the closing cor. of Frac. Ts. 17 and 18 N., R. 9 W.

In the portion of said Tp. bdy. south of the bdy. of the Luis Maria Baca Float No. 5,  $\frac{1}{4}$  sec. and sec. cors., alternately, are established at 40 ch. intervals counting from the south, and such cors. have common reference to areas in Frac. Ts. 17 N., Rs. 8 and 9 W. The survey of the remainder of this Tp. bdy. is accomplished by the establishment on the grant bdy. of the subdivisional closing cors. of secs. 2, 11, 14, 23 and 24, of Frac. T. 17 N., R. 9 W., and the  $\frac{1}{4}$  sec. cors. referring to quarters of said secs. only. The  $\frac{1}{4}$  sec. cors. of secs. 11, 14 and 24 are established on the grant bdy. at midpoints bet. the closing cors. The E.  $\frac{1}{4}$  sec. cor. of sec. 2 is established on the grant bdy. at 40 chs. in latitude north from the closing cor. of secs. 2 and 11, and the E.  $\frac{1}{4}$  sec. cor. of sec. 23 is established on the grant bdy. at midpoint in latitude bet. the cor. of secs. 23, 24, 25 and 26 and the closing cor. of secs. 14 and 23.

The true point for std. cor. of Frac. Ts. 17 N., Rs. 8 and 9 W. (on 4th Std. Par. N.) is on face of a cliff, 50 ft. high, bearing NW. and SE., facing SW., where it was impracticable to monument the cor., therefore a witness cor. thereto was established at 30 lks. W. from true cor. point, which is an iron post, 3 ins. in diam., projecting 24 ins. above ground, firmly set in ground and mound of stone, marked on brass cap and witnessed as described in the official record.

From true cor. point,

North, bet. secs. 31 and 36,

Over mountainous land, thru scattering timber and undergrowth.

Asc. 45 ft. over nearly vertical SW. face of cliff.

0.54 Top of cliff, bears NW. and SE. Asc. 255 ft. over steep, rocky S. slope.

7.98 Spur, slopes W.; desc. 397 ft. over steep, rocky NW. slope.

24.25 Bottom of ravine, course NW.; asc. 164 ft. over SW. slope.

36.24 Spur, slopes NW.; desc. 40 ft. over N. slope to

40.00 Set an iron post, 3 ft. long, 1 in. in diam., on exposed bedrock, and in a mound of stone to top, for  $\frac{1}{4}$  sec. cor. of secs. 31 and 36, with brass cap marked

$\frac{1}{4}$

S36 | S31

1938

from which

Survey: East boundary: Frac. T. 17 N., R. 9 W.

23

Chains

A pinyon, 8 ins. diam., bears N.  $89\frac{1}{4}^{\circ}$  E., 134 lks. dist., marked  $\frac{1}{4}$  S31 BT.

A pinyon, 4 ins. diam., bears S.  $54\frac{1}{4}^{\circ}$  W., 74 lks. dist., marked  $\frac{1}{4}$  S36 BT.

Desc. 25 ft. over N. slope to rim of canyon.

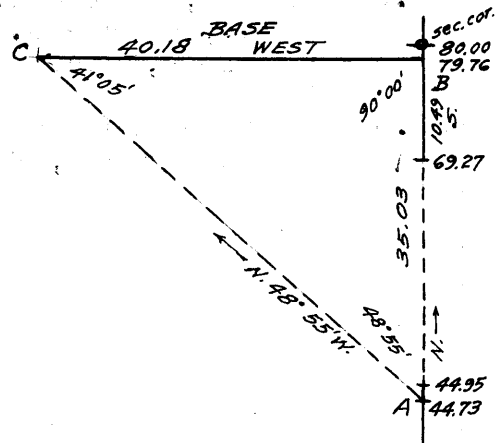
44.73 Triangulation point "A". Continue chaining to

44.95 Rim of canyon, and top of cliffs, bearing NE. and SW. Discontinue chaining at this point owing to precipitous descent over cliffs ahead, and triangulate measurement as follows:

Return to 44.73 ch. station designated as triangulation point "A".

Set flag "B" ahead on Tp. bdy., the vertical angle to which from "A" is  $-23^{\circ}$ .

From "B" chain a base, West, 40.18 chs. and set flag "C" which bears N.  $48^{\circ} 55'$  W. from "A".



Included angles of triangle "A-B-C" are:  $48^{\circ} 55'$ ,  $90^{\circ} 00'$ , and  $41^{\circ} 05'$ , the sum of which is  $180^{\circ} 00'$ .

Chained dist. Tp. cor. to "A" = 44.73 chs. North  
Triang. dist. A-B = 35.03 chs. North

Dist. Tp. cor. to "B" = 79.76 chs.. North

From "B" chain return measurement South 10.49 chs. to

69.27 Foot of precipitous descent, and left edge of bed of Burro Creek, bears NE. and SW., about 1050 ft. below the  $\frac{1}{4}$  sec. cor. of secs. 31 and 36.

Thence, North, resuming chaining and continuing measurement from Tp. cor.

Over nearly level bed of Burro Creek, in bottom of canyon. Stream of water, 25 lks. wide, course SW. from N. Asc. gradually along stream to

74.96 Leave stream of water and bed of Burro Creek, course S. from N.  $10^{\circ}$  W. Asc. 61 ft. over steep SW. slope to

79.25 Thence along steep W. slope, ascending slightly to

80.00 Set an iron post, 3 ft. long, 2 ins. in diam., 14 ins. in the ground to bedrock, with a stone marked with a cross (X) deposited at base, and in a mound of stone to top, for cor. of secs. 25, 30, 31 and 36, with brass cap marked

T17N	
R9W	R8W
S25	S30
S36	S31

1938.

No bearing trees available.

Land, mountainous.

Soil, rocky, 4th rate.

Survey: East boundary: Frac. T. 17 N., R. 9 W.

24

Chains

Timber, pinyon, juniper and oak. Willow and sycamore along Burro Creek.  
Undergrowth, oakbrush, laurel, catclaw and cacti.

North, bet. secs. 25 and 30.

Over mountainous land, in Burro Creek Canyon, thru scattering timber and undergrowth. Along steep W. slope. Asc. 80 ft. to

8.30 Desc. 57 ft. to

14.00 Drain, course W. into Burro Creek which is about 5 chs. W., course S. Continue over steep, broken, rocky W. slope, ascending 220 ft. to

40.00 Set an iron post,  $\frac{3}{4}$  ft. long, 1 in. in diam., 27 ins. in the ground, for  $\frac{1}{4}$  sec. cor., with brass cap marked

$\frac{1}{4}$

S25 | S30

1938

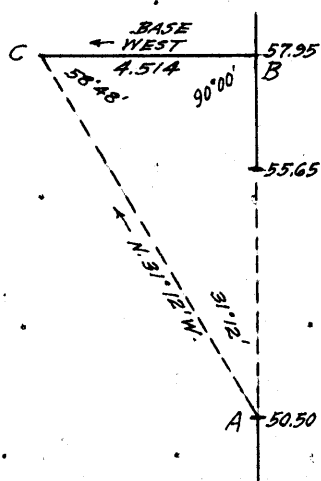
No bearing trees available.

Raise a mound of stone, 3 ft. base, 2 ft. high, W. of cor.

Continue over steep, rocky W. slope, on E. side of Burro Creek Canyon. Asc. 3 ft.

41.50 Desc. 28 ft. to

50.50 Discontinue chaining at this point, owing to precipitous descent over cliffs facing NW. Triangulate measurement as follows:



Designate this point as "A" and set flag "B" ahead on Tp. bdy., the vertical angle to which is  $-34^\circ$ .

From "B" double chain a base, West, and set flag "C" which bears N.  $31^\circ 12'$  W. from "A".

Mean measurement of base "B-C" = 4.514 chs.

Included angles of triangle.

"A-B-C" are:  $31^\circ 12'$ ,  $90^\circ 00'$ , and  $58^\circ 48'$ , the sum of which is  $180^\circ 00'$ .

Chained dist. on Tp. bdy. from sec. cor. to "A" = 50.50 chs. North.

Triangulated dist. "A" to "B" = 7.45 chs.

Dist. sec. cor. to "B" = 57.95 chs. North.

From 57.95 ch. station on Tp. bdy. chain return measurement South, 2.30 chs. to

55.65 Burro Creek, 40 lks. wide, course SW. in bottom of canyon, about 300 ft. below 50.50 ch. station turning to S. at about 4 chs. SW. of this point. Contains a stream of water, 25 lks. wide, 6 ins. deep.

Survey: East boundary: Frac. T. 17 N., R. 9 W.

Chains	Thence; North, continuing measurement from sec. cor. Resume chaining. Asc. 89 ft. over steep SE. slope to 57.95 Triangulation point "B" on point of spur, sloping E. into Burro Creek Canyon, at mouth of Hellzapopin Canyon. Continue chaining. Desc. 34 ft. over NE. slope. 59.90 Bottom of Hellzapopin Canyon, 20 lks. wide, course SE., containing a stream of water, 2 lks. wide, 2 ins. deep. Asc. 84 ft. over steep SW. slope on E. side of canyon. 61.88 Point of spur, slopes SW.; asc. 18 ft. over W. slope. 64.07 Desc. 30 ft. over NW. slope. 65.50 Bottom of Hellzapopin Canyon, 15 lks. wide, in bend, course S. 10° W. from N. 30° W., containing stream of water, 2 lks. wide, 2 ins. deep. Asc. 274 ft. over steep SW. slope. 78.22 Asc. 13 ft. over steep W. slope to 80.00 Set an iron post, 3 ft. long, 2 ins. in diam., 22 ins. in the ground to bedrock, and in a mound of stone to top, for cor. of frac. secs. 19 and 24, and secs. 25 and 30, with brass cap marked <div>T17N R9W R8W S24 S19 S25 S30 1938</div> No bearing trees available. Raise a mound of stone, 3 ft. base, 2 ft. high, W. of cor. Land, mountainous. Soil, rocky, 4th rate. Timber; juniper and pinyon. Willow and sycamore along the bottoms of the canyons. Undergrowth, oakbrush, laurel, catclaw and cacti.
	North, on true line, bet. frac. secs. 19 and 24. Over mountainous land, thru scattering timber and under- growth. Asc. 165 ft. over steep, rocky W. slope of spur. 13.75 Asc. 836 ft. over steep, rocky, broken SW. slope to top of spur. 30.59 Top of cliff, 35 ft. high, nearly vertical, bearing NW. and SE., facing SW. 33.01 Spur, slopes SE.; asc. 8 ft. along E. slope to 34.40 Intersect the S. line of the boundary of Luis Maria Baca Float No. 5 private land grant. Set an iron post, 3 ft. long, 3 ins. in diam., 24 ins. in the ground to bedrock, and in a mound of stone to top, on N. side of volcanic rock outcropping 3 ft. wide, 4 ft.

Survey: East boundary: Frac. T. 17 N., R. 9 W.

26

Chains	<p>high, 10 ft. long, bearing NW. and SE., for closing cor, of Frac. Ts. 17 N., Rs. 8 and 9 W., with brass cap marked</p> <div style="text-align: center;"> <u>LMBF No 5</u>  <table> <tr> <td>S24</td><td>S19</td></tr> <tr> <td>R9W</td><td>R8W</td></tr> </table> <p>CC T17N</p> <p>1938</p> </div> <p>No bearing trees available.</p> <p>Raise a mound of stone, 5 ft. base, <math>3\frac{1}{2}</math> ft. high, S. of cor., at SE. end of volcanic rock outcropping.</p> <p>From the point of intersection the reestablished 42nd mile mon. of the LMBF No. 5 bdy., hereinbefore described, bears N. <math>87^{\circ} 16'</math> E., 16.02 chs. dist.</p> <p>From above described closing cor.,</p> <p>S. <math>87^{\circ} 16'</math> W., on true line, on E. bdy. of Frac. T. 17 N., R. 9 W., and on the bdy. of Luis Maria Baca Float No. 5, N. of frac. sec. 24.</p> <p>Over mountainous land, thru scattering timber and undergrowth.</p> <p>Asc. 24 ft. over E. slope.</p> <p>2.78 Spur, slopes SE. from N.; desc. gradually over SW. slope to</p> <p>6.78 Rim of canyon, bears N. and SW.; desc. 380 ft. over steep W. slope.</p> <p>23.18 Bottom of Hellzapopin Canyon, containing a stream of water, 1 lk. wide, 1 in. deep, course S. Asc. 485 ft. over steep E. slope to</p> <p>40.19 (Midpoint bet. closing cor. of Frac. Ts. 17 N., Rs. 8 and 9 W., and closing cor. of frac. secs. 23 and 24) Set an iron post, 3 ft. long, 1 in. in diam., 28 ins. in the ground, for N. <math>\frac{1}{4}</math> sec. cor. of frac. sec. 24, with brass cap marked</p> <div style="text-align: center;"> <u>LMBF No 5</u>  <math>\frac{1}{4}</math> S24 </div> <p style="text-align: center;">1938</p> <p>No bearing trees available.</p> <p>Raise a mound of stone, 3 ft. base, <math>1\frac{1}{2}</math> ft. high, S. of cor.</p> <p>Asc. 300 ft. over steep E. slope to</p> <p>48.88 Rim of canyon, bears N. and S. Leave mountainous and enter gently rolling land. Asc. gradually over E. slope.</p> <p>49.68 Low divide, bears N. and S.; desc. gradually over W. slope.</p> <p>60.15 (76.17 chs. S. <math>87^{\circ} 16'</math> W. from 42nd mile mon.) Intersect the reestablished 43rd mile mon. of the bdy. of the Luis Maria Baca Float No. 5, hereinbefore described. Desc. 92 ft. over W. slope.</p> <p>74.88 Bottom of ravine, 8 lks. wide, course SW.; desc. 14 ft.</p>	S24	S19	R9W	R8W
S24	S19				
R9W	R8W				

Survey: East boundary: Frac. T. 17 N., R. 9 W.

27

Chains	
	over S. slope to
80.38	Intersect the subdivision line bet. frac. secs. 23 and 24, surveyed N. 0° 01' W. Closing cor. of said secs. established at this point as hereinafter described.  Land, mountainous, broken and rolling. Soil, rocky, 4th rate. Timber, juniper and pinyon. Sycamore along bottom of canyon. Undergrowth, oakbrush, catclaw and cacti.
	From closing cor. of frac. secs. 23 and 24,  S. 87° 16' W., on true line, on E. bdy. of Frac. T. 17 N., R. 9 W., and on the bdy. of the Luis Maria Baca Float No. 5, N. of frac. sec. 23.  Over rolling land, thru scattering timber and undergrowth. Asc. 80 ft. over SE. slope.
4.17	Barbed wire fence, bears N. 86° E. and S. 86° W.
8.10	Spur, slopes S. Leave rolling and enter mountainous land. Desc. 241 ft. over steep, rocky W. slope.
8.60	Same fence, bears N. 3° W. and S. 3° E. Fence cor. bears S. 3° E., 30 lks. dist. where the fence turns to N. 86° E.
15.60	Bottom of canyon, 20 lks. wide, course S. Joins bottom of Happy Hollow Canyon about 6 chs. S. of this point. Asc. 129 ft. over steep, rocky E. slope.
20.30	Top of ascent. Thence across point of spur, sloping SE.
23.30	Leave point of spur. Desc. 52 ft. over steep SW. slope to
25.04	(45.27 chs. S. 87° 16' W. from 43rd mile mon.) Intersect the original SW. cor. of Luis Maria Baca Float No. 5, which is a volcanic boulder in place, exposed 6x3x3 ft. above ground, marked VL No 5 SWC on E. face and witnessed by a mound of stone N. No bearing trees.  This cor. is on left bank of wash, 15 lks. wide, course SE., in bottom of Happy Hollow Canyon.  Thence  N. 1° 55' E., on true line, on E. bdy. of Frac. T. 17 N., R. 9 W., and on the bdy. of the Luis Maria Baca Float No. 5, E. of frac. sec. 23.  Over mountainous land, in Happy Hollow Canyon, thru scattering timber and undergrowth. Asc. 101 ft. over steep rocky SW. slope to
4.08	Left rim of canyon, bears NW. and SE. Leave canyon and enter heavily rolling land. Asc. 59 ft. over SW. slope to
10.69	(Midpoint in latitude bet. cor. of secs. 23, 24, 25 and 26, and the closing cor. of frac. secs. 14 and 23) Set an iron post, 3 ft. long, 1 in. in diam., 27 ins. in the ground, for E. ¼ sec. cor. of frac. sec. 23, with brass cap marked

Survey: East boundary: Frac. T. 17 N., R. 9 W.

28

Chains

$\frac{1}{4}$ S23	LM
	BF
	No 5

1938

No bearing trees available.

Raise a mound of stone,  $3\frac{1}{2}$  ft. base, 2 ft. high, W. of cor.

Asc. 3 ft. over SW. slope.

11.00 Spur, slopes S.  $10^{\circ}$  E., asc. 110 ft. over E. slope to

32.36 Intersect the reestablished 44th mile mon. on the bdy. of the Luis Maria Baca Float No. 5, hereinbefore described.

Thence

N.  $2^{\circ} 04'$  E., on true line, continuing measurement.

Asc. 90 ft. over E. slope.

50.72 Intersect the subdivision line bet. frac. secs. 14 and 23 surveyed due East.

Closing cor. of said secs. established at this point as hereinafter described.

Land, rolling and mountainous.

Soil, gravelly and rocky, 2nd, 3rd and 4th rates.

Timber, juniper.

Undergrowth, oakbrush, catclaw and cacti.

From closing cor. of frac. secs. 14 and 23,

N.  $2^{\circ} 04'$  E., on true line, on E. bdy. of Frac. T. 17 N., R. 9 W., and on the bdy. of the Luis Maria Baca Float No. 5, E. of frac. sec. 14.

Over heavily rolling land, thru scattering timber and undergrowth.

Asc. 66 ft. over E. slope.

13.55 Rim of ravine, bears NW. and SE.; desc. 148 ft. over NE. slope.

30.99 Wash, 8 lks. wide, course SE., in bottom of ravine; asc. 117 ft. over SW. slope to

40.07 (Midpoint of E. bdy. of frac. sec. 14) Set an iron post, 3 ft. long, 1 in. in diam., 14 ins. in the ground to bedrock, with a stone marked with a cross (X) deposited at base, and in a mound of stone to top, for E.  $\frac{1}{4}$  sec. cor. of frac. sec. 14, with brass cap marked

$\frac{1}{4}$ S14	LM
	BF
	No 5

1938

No bearing trees available.

Asc. 10 ft. over SW. slope.

40.81 Asc. 92 ft. over W. slope to

Survey: East boundary: Frac. T. 17 N., R. 9 W.

Chains	
61.69	(80.05 chs. N. 2° 04' E. from the 44th mile mon.) Intersect the reestablished 45th mile mon. of the bdy. of the Luis Maria Baca Float No. 5, hereinbefore described.  Thence N. 1° 59' E., on true line, continuing measurement.  Over mountainous land, thru scattering timber and undergrowth.  Asc. 146 ft. over steep W. slope to
80.14	Intersect the subdivision line bet. frac. secs. 11 and 14, surveyed due East.  Closing cor. of said secs. established at this point as hereinafter described.  Land, heavily rolling and mountainous. Soil, gravelly and rocky, 2nd, 3rd and 4th rates. Timber, juniper. Undergrowth, oakbrush, catclaw and cacti.
	From closing cor. of frac. secs. 11 and 14.  N. 1° 59' E., on true line, on E. bdy. of Frac. T. 17 N., R. 9 W., and on the bdy. of the Luis Maria Baca Float No. 5, E. of frac. sec. 11.  Over mountainous land, thru scattering timber and undergrowth.  Asc. 86 ft. over steep W. and SW. slopes.
10.07	Point of spur, slopes W. Thence over heavily rolling land. Desc. 50 ft. over NW. slope.
14.75	Bottom of draw, 3 lks. wide, course SW., joined at 80 lks. SW. of this point by another draw from N. Asc. 60 ft. over SW. slope.
23.29	Asc. 70 ft. over W. slope.
38.75	Asc. 9 ft. over SW. slope to
40.02	(Midpoint of E. bdy. of frac. sec. 11) Set an iron post, 3 ft. long, 1 in. in diam., 28 ins. in the ground, for E. $\frac{1}{4}$ sec. cor. of frac. sec. 11, with brass cap marked <div style="text-align: center;"><math>\frac{1}{4}</math>   LM S11   BF           No 5  1938  from which  A juniper, 4 ins. diam., bears S. 78° W., 101 lks. dist., marked <math>\frac{1}{4}</math> S11 BT.  A juniper, 4 ins. diam., bears N. 38<math>\frac{1}{2}</math>° W., 237 lks. dist., marked <math>\frac{1}{4}</math> S11 BT.  Asc. 122 ft. over SW. slope.</div>
56.55	Spur ridge, bears NW. and SE., sloping SE. Asc. gradually over E. slope to



Survey: East boundary: Frac. T. 17 N., R. 9 W.

30

Chains	
61.41	(79.86 chs. N. 1° 59' E. from the 45th mile mon.) Intersect the reestablished 46th mile mon. of the bdy. of the Luis Maria Baca Float No. 5, hereinbefore described.
	Thence
	N. 2° 07' E. on true line continuing measurement.
	Over rolling land, thru scattering timber and undergrowth.
	Desc. 65 ft. over NE. slope.
75.86	Wash, 10 lks. wide, course SE.; asc. 30 ft. over SW. slope to
80.04	Intersect the subdivision line bet. frac. secs. 2 and 11, surveyed due East. Closing cor. of said secs. established at this point as hereinafter described.
	Land, mountainous and rolling. Soil, gravelly and rocky, 2nd, 3rd and 4th rates. Timber, juniper and oak. Undergrowth, oakbrush and cacti.
	From closing cor. of frac. secs. 2 and 11.
	N. 2° 07' E., on true line, on E. bdy. of Frac. T. 17 N., R. 9 W. and on the bdy. of the Luis Maria Baca Float No. 5, E. of frac. sec. 2.
	Over rolling land, thru scattering timber and undergrowth.
	Asc. 137 ft. over SW. slope.
32.37	Spur, slopes SE.; asc. gradually over E. slope to
40.03	(40.00 chs. in N. latitude from closing cor. of frac. secs. 2 and 11) Set an iron post, 3 ft. long, 1 in. in diam., 16 ins. in the ground to bedrock, and in a mound of stone to top, for E. $\frac{1}{4}$ sec. cor. of frac. sec. 2, with brass cap marked
	<div style="display: flex; align-items: center; justify-content: center;"> <div style="text-align: center; margin-right: 10px;"> <math>\frac{1}{4}</math> S2 </div> <div style="border-left: 1px solid black; padding-left: 5px; text-align: center;"> LM BF No 5 </div> </div>
	1938
	from which
	A juniper, 12 ins. diam., bears S. 70 $\frac{1}{4}$ ° W., 157 lks. dist., marked $\frac{1}{4}$ S2 BT.
	A juniper, 3 ins. diam., bears N. 29° W., 42 lks. dist., marked BT only.
	Asc. gradually over E. slope.
42.28	Asc. 20 ft. over SE. slope.
48.37	Low spur, slopes SE. from W.; desc. 40 ft. over N. slope to 47th mile mon.
55.89	Barbed wire fence (LMBF No. 5 fence), bears N. and S.
61.28	(79.91 chs. N. 2° 07' E. from the 46th mile mon.) Intersect the original 47th mile mon. of the bdy. of the Luis



Resurvey: West boundary: Frac. T. 17 N., R. 9 W. and  
Survey: East boundary: Frac. T. 17 N., R. 9½ W.

32

## Chains

The survey of the East boundary of T. 17 N., R. 10 W. in 1926 established all cors. on that Tp. bdy. with common reference to areas in Ts. 17 N., Rs. 9 and 10 W., therefore this survey was also the original survey of the West bdy. of Frac. T. 17 N., R. 9 W.

The survey of the 4th Std. Par. N., thru Rs. 8, 9 and Frac. 9½ W., executed in 1930, established the std. cor. of Frac. Ts. 17 N., Rs. 9 and 9½ W. on said Parallel at 1 mile, 11.81 chs. E. from the E. bdy. of T. 17 N., R. 10 W., thus creating Frac. T. 17 N., R. 9½ W., situate bet. Frac. T. 17 N., R. 9 W. and T. 17 N., R. 10 W.

The following notes describe an independent resurvey of the West bdy. of Frac. Tp. 17 N., R. 9 W., due North, initiating same at the std. cor. of Frac. Ts. 17 N., Rs. 9 and 9½ W., reestablishing ¼ sec. and sec. cors. alternately thereon, at 40 ch. intervals, and establishing closing cor. of Frac. Ts. 17 N., Rs. 9 and 9½ W., where this Tp. bdy. intersects the S. bdy. of sec. 31, Frac. T. 18 N., R. 9 W.

As all of the reestablished ¼ sec. and sec. cors. on this Tp. bdy. are designated, properly marked and witnessed for common reference to areas in Frac. Ts. 17 N., Rs. 9 and 9½ W., such cors. are also original cors. for the areas W. of line in Frac. T. 17 N., R. 9½ W., therefore this independent resurvey of West bdy. of Frac. T. 17 N., R. 9 W. combines with original survey of East bdy. of Frac. T. 17 N., R. 9½ W.

The std. cor. of Frac. Ts. 17 N., Rs. 9 and 9½ W., on the 4th Std. Parallel N. is an iron post, 3 ins. in diam., projecting 36 ins. above ground, firmly set in a mound of stone, and marked on brass cap as described in the official record, No bearing trees.

Thence

North, bet. secs. 31 and 36.

Over mountainous land, thru scattering undergrowth, along steep, rocky E. slope. Desc. 73 ft.

13.62 Asc. 38 ft.

24.25 Desc. 54 ft.

32.33 Asc. 26 ft. to

40.00 Set an iron post, 3 ft. long, 1 in. in diam., 6 ins. in the ground to bedrock, with a stone marked with a cross (X) deposited at base, and in a mound of stone to top, for ¼ sec. cor. of secs. 31 and 36, with brass cap marked

¼

S36 | S31

1938

Continue over steep, rolling, rocky E. slope, thru scattering undergrowth.

Desc. 28 ft.

49.50 Asc. 71 ft.

74.84 Desc. 20 ft. over NE. slope.

Resurvey: West boundary: Frac. T. 17 N., R. 9 W., and  
Survey: East boundary: Frac. T. 17 N., R. 9½ W.

Chains	
78.50	Wash, 20 lks. wide, course S. 20° E.; asc. 18 ft. over SW. slope to
80.00	Set an iron post, 3 ft. long, 2 ins. in diam., 6 ins. in the ground to bedrock, with a stone marked with a cross (X) deposited at base, and in a mound of stone to top, for cor. of secs. 25, 30, 31 and 36, with brass cap marked
	<div>T17N R9½W   R9W S25   S30 S36   S31</div> <div>1938</div> <div>Land, mountainous. Soil, rocky, 4th rate. Timber, none. Undergrowth, oakbrush and cacti.</div>
	North, bet. secs. 25 and 30.
	Over mountainous land, thru scattering undergrowth and very scattering timber.
	Asc. 390 ft. over SW. slope.
32.44	Spur, slopes SW.; desc. 101 ft. over NW. slope to
40.00	Set an iron post, 3 ft. long, 1 in, in diam., 28 ins. in the ground, for ¼ sec. cor. of secs. 25 and 30, with brass cap marked
	<div>¼ S25   S30</div> <div>1938</div> <div>No bearing trees available. Raise a mound of stone, 3½ ft. base, 2 ft. high, W. of cor. Desc. 57 ft. over NW. slope.</div>
44.92	Draw, course W.; asc. 63 ft. over SW. slope.
49.00	Asc. 72 ft. over W. slope.
63.25	Asc. 93 ft. over SW. and S. slopes.
73.94	Spur, slopes SW.; desc. 50 ft. over NW. slope to
80.00	Set an iron post, 3 ft. long, 2 ins. in diam., 28 ins. in the ground, for cor. of secs. 19, 24, 25 and 30, with brass cap marked
	<div>T17N R9½W   R9W S24   S19 S25   S30</div> <div>1938</div> <div>No bearing trees available.</div>

Resurvey: West boundary: Frac. T. 17 N., R. 9 W. and  
Survey: East boundary: Frac. T. 17 N., R. 9½ W.

34

Chains

Raise a mound of stone, 3½ ft. base, 2½ ft. high,  
W. of cor.

Land, mountainous.  
Soil, rocky, 4th rate.  
Timber, oak.  
Undergrowth, oakbrush and cacti.

North, bet. secs. 19 and 24.

Over mountainous land, thru scattering undergrowth and  
very scattering timber.

Desc. 34 ft. over NW. slope.

4.93 Draw, course W.; asc. 181 ft. over SW. slope.

14.00 Dim road, bears NW. and SE.

18.54 Spur, slopes W.; desc. 280 ft. over N. slope to

40.00 Set an iron post, 3 ft. long, 1 in. in diam., 18 ins. in  
the ground to bedrock, with a stone marked with a cross  
(X) deposited at base, and in a mound of stone to top,  
for ¼ sec. cor. of secs. 19 and 24, with brass cap  
marked

¼

S24 | S19

1938

No bearing trees available.

Desc. 5 ft. over N. slope.

41.00 Draw, course NW.; asc. 247 ft. over SW. slope.

58.45 Spur, slopes W.; thence across top of spur.

60.05 Leave top of spur and desc. 220 ft. over NW. slope to

69.46 Foot of slope; bears NE. and SW. Thence across nearly  
level land at E. end of Pilot Knob Basin, thru dense  
undergrowth.

74.65 Leave basin and enter rolling land. Asc. 30 ft. over S.  
slope to

80.00 Set an iron post, 3 ft. long; 2 ins. in diam., 18 ins. in  
the ground to bedrock, with a stone marked with a cross  
(X) deposited at base, and in a mound of stone to top,  
for cor. of secs. 13, 18, 19 and 24, with brass cap  
marked

T17N

R9½W	R9W
S13	S18
S24	S19

1938

No bearing trees available.

Land, mountainous, nearly level and rolling.  
Soil, rocky, 4th rate.  
Timber, oak and juniper.  
Undergrowth, oakbrush.

Resurvey: West boundary: Frac. T. 17 N., R. 9 W. and  
Survey: East boundary: Frac. T. 17 N., R. 9½ W.

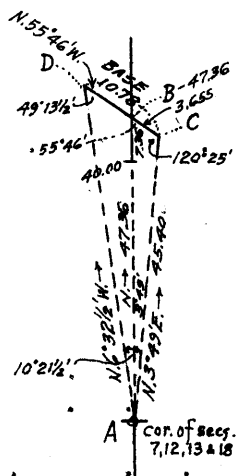
Chains	North, bet. secs. 13 and 18.  Over rolling land, thru dense undergrowth and very scattering timber.  Asc. 91 ft. over S. slope.  11.50 Spur, slopes SW.; desc. 29 ft. over NW. slope.  16.46 Bottom of ravine, course SW. Leave rolling and enter mountainous land. Undergrowth becomes scattering.  Asc. 345 ft. over S. slope.  30.37 Spur, slopes SW. from E. Heads on W. side Pilot Knob, a high rocky butte about 15 chs. E. From this point on Tp. bdy. a concrete water tank in Pilot Knob Basin near center of sec. 13, Frac. T. 17 N., R. 9½ W. bears N. 84½° W.  Desc. 182 ft. over N. slope.  38.00 Drain, course SW.; asc. 6 ft. over SW. slope to  40.00 Set an iron post, 3 ft. long, 1 in. in diam., 16 ins. in the ground to bedrock, with a stone marked with a cross (X) deposited at base, and in a mound of stone to top, for ¼ sec. cor. of secs. 13 and 18, with brass cap marked  <div>S13   S18 1938</div> No bearing trees available.  Asc. 505 ft. over steep, broken, rocky SW. slope.  76.05 Ridge, bears NW. and SE. From this point the concrete water tank in Pilot Knob Basin, near center of sec. 13, bears S. 43° W. Desc. 60 ft. over NE. slope to  80.00 Set an iron post, 3 ft. long, 2 ins. in diam., 28 ins. in the ground, for cor. of secs. 7, 12, 13 and 18, with brass cap marked  <div>T17N R9½W   R9W S12   S7 S13   S18 1938</div> No bearing trees available.  Raise a mound of stone, 2½ ft. base, 1½ ft. high, W. of cor.  Land, rolling, broken and mountainous. Soil, rocky, 4th rate. Timber, juniper. Undergrowth, oakbrush.
	North, bet. secs. 7 and 12.  Over mountainous land, thru scattering undergrowth and very scattering timber. Precipitous slopes and cliffs

Resurvey: West boundary: Frac. T. 17 N., R. 9 W. and  
Survey: East boundary: Frac. T. 17 N., R. 9½ W.

36

Chains

in a canyon ahead render chaining impracticable, therefore triangulate as follows:



Designate cor. of secs. 7, 12, 13 and 18 as "A".

Set flag "B" ahead on Tp. bdy., the vertical angle to which is -9°.

Set flag "C" near right rim of canyon, and bearing N. 3° 49' E. from "A".

Set flag "D" near rim of canyon bearing N. 6° 32½' W. from "A" and N. 55° 46' W. from "C".

Mean of two sets of chaining of the base "C-B-D" is 10.78 chs., and from "C" to "B" is 3.655 chs.

Included angles of the triangle "A-C-D" are: 10° 21½', 120° 25' and 49° 13½', the sum of which is 180° 00'.

Included angles of the triangle "A-B-C" are: 3° 49', 55° 46' and 120° 25', the sum of which is 180° 00'.

Based on triangle "A-C-D" the computed dist. "A-C" = 45.40 chs. N. 3° 49' E.

Based on triangle "A-B-C" the computed dist. "A-B" = 47.36 chs. North.

5.00 (Approx.) Bottom of ravine, course NW., about 70 ft. below sec. cor. Desc. along steep W. slope.

15.00 (Approx.) Point of spur, slopes NW.; desc. about 250 ft. over precipitous, broken, rocky N. slope.

31.00 (Approx.) Wash, 30 lks. wide, course NW. in bottom of canyon. Asc. gradually over SW. slope to

35.00 (Approx.) Dim trail, bears NW. and SE. at foot of cliffs bearing NW. and SE. Asc. about 200 ft. over SW. face of cliffs to ¼ sec. cor.

From triangulation point "B" at 47.36 ch. station chain return measurement south 7.36 chs. to

40.00 Set an iron post, 3 ft. long, 1 in. in diam., 6 ins. in the ground to bedrock, with a stone marked with a cross (X) deposited at base, and in a mound of stone to top, for ¼ sec. cor. of secs. 7 and 12, with brass cap marked

¼

S12 | S7

1938

No bearing trees available.

Thence

North, resuming chaining, and continuing measurement from cor. of secs. 7, 12, 13 and 18.

Asc. 221 ft. over steep SW. slope to

45.80 Right rim of canyon, bears NW. and SE. Leave canyon.

Resurvey: West boundary: Frac..T. 17 N., R. 9 W. and  
Survey: East boundary: Frac..T. 17 N., R. 9½ W.

BOOK 4208

37

Chains

Thence over nearly level land on mesa.

47.36 Triangulation point "B". Continue chaining.

71.09 Rim of mesa, bears N. 80° W. and S. 70° E. Leave mesa and enter mountainous land and dense undergrowth..  
Desc. 245 ft. over steep NE. slope to

80.00 Set an iron post, 3 ft. long, .2 ins. in diam., 8 ins. in the ground to bedrock, with a stone marked with a cross (X) deposited at base, and in a mound of stone to top, for cor. of secs. 1, 6, 7 and 12, with brass cap marked

T17N	
R9½W	R9W
S1	S6
S12	S7

1938

No bearing trees available.

Land, mountainous, broken, and nearly level.  
Soil, rocky, 4th rate.  
Timber, juniper and pinyon.  
Undergrowth, oakbrush.

North, bet. secs. 1 and 6.

Over mountainous land, thru dense undergrowth and very scattering timber.

Desc. 298 ft. over NE. slope.

14.50 Bear Creek, 25 lks. wide, in bottom of canyon, containing a stream of water, 15 lks. wide, 8 ins. deep, course N. 40° W. for about 5 chs., thence N. 15° W. Asc. 153 ft. over steep SW. slope. Undergrowth becomes scattering.

24.09 Point of spur, slopes N. 70° W. Discontinue chaining at this point owing to precipitous descent over cliffs facing N. Triangulate measurement as follows:

Designate 24.09.ch..station as "A".

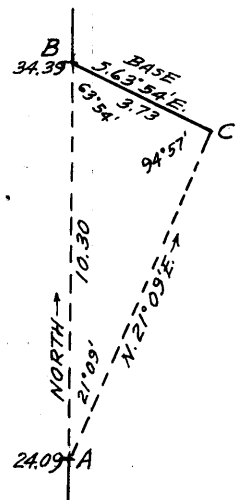
Set flag "B" ahead on Tp. bdy.

Set flag "C" N. 21° 09' E. from "A". Bearing "B-C" is S. 63° 54' E..

Mean of two sets of chaining of the base "B-C" is 3.73 chs.

Included angles of the triangle "A-B-C" are 21° 09', 63° 54', and 94° 57', the sum of which is 180° 00'.

Chained dist. sec. cor. to "A" = 24.09 chs. North.  
Triang. dist. "A" to "B" = 10.30 chs. North.  
Dist. sec.cor. to "B" = 34.39 chs. North.



34.39 Triang. point "B". Resume chaining and continue line and measurement. Desc. 121 ft. over NW. slope to ¼ sec. cor.



Resurvey: West boundary: Frac. T. 17 N., R. 9 W. and  
Survey: East boundary: Frac. T. 17 N., R. 9½ W.

38

Chains

35.00

NW. end of barbed wire fence ( 4 wire) bearing N. 20° W. and S. 20° E. This fence abuts against face of cliff about 10 chs. SE. from this point.

40.00

Set an iron post, 3 ft. long, 1 in. in diam., 6 ins. in the ground to bedrock, with a stone marked with a cross (X) deposited at base, and in a mound of stone to top, for ¼ sec. cor. of secs. 1 and 6, with brass cap marked

¼

S1 | S6

1938

No bearing trees available.

Desc. 118 ft. over NW. slope.

47.00

Adobe Creek, 50 lks. wide, course SW., containing a stream of water, 30 lks. wide, 12 ins. deep, in bottom of canyon. Asc. 411 ft. over steep SE. slope.

68.60

Spur, slopes SE., near point of same. Desc. 65 ft. over NE. slope.

74.50

Bottom of ravine, course SE.; asc. 71 ft. over SW. slope to

77.30

Intersect the S. bdy. of Frac. T. 18 N., R. 9 W. Set an iron post, 3 ft. long, 3 ins. in diam., 18 ins. in the ground, with a stone marked with a cross (X) deposited at base, and in a mound of stone to top, for closing cor. of Frac. Ts. 17 N., Rs. 9 and 9½ W., with brass cap marked

T18N R9W

S31

S1 | S6

R9½W | R9W

CC

T17N

1938

No bearing trees available.

From the point of intersection the S.¼ sec. cor. of sec. 31, Frac. T. 18 N., R. 9 W., bears S. 88° 59' E., 15.98 chs. dist., and from same point the cor. of Frac. T. 18 N., R. 9 W. and T. 18 N., R. 10 W. bears N. 88° 59' W., 23.49 chs. dist. Both of said cors. hereinbefore described.

Land, mountainous.  
Soil, rocky, 4th rate.  
Timber, juniper, oak and pinyon.  
Undergrowth, oakbrush.

Survey: Subdivision lines: Frac. T. 17 N., R. 9 W.

4208

39

## Chains

Commence the survey of the subdivision of Frac. T. 17 N., R. 9 W. at the std. cor. of secs. 35 and 36, on S. bdy. of the Tp. (4th Std. Par. N.), which is an iron post, 2 ins. in diam., projecting 28 ins. above ground, firmly set in ground and mound of stone, marked on brass cap and witnessed as described in the official record.

Thence

N. 0° 01' W., bet. secs. 35 and 36.

Over mountainous land, thru scattering timber and undergrowth.

Desc. 145 ft. over NW. slope:

4.40 Bottom of gulch, 10 lks. wide, course N. 65° W.; asc. 75 ft. over SW. slope.

8.55 Point of spur, sloping W., and left rim of Burro Creek Canyon, bears N. and SW. Thence along top of broken cliffs facing W. and forming the canyon rim.

11.34 Leave top of cliffs and enter Burro Creek Canyon. Desc. 175 ft. over steep broken W. slope.

26.40 Burro Creek, 140 lks. wide, course SW., in bottom of canyon, containing a stream of water, 25 lks. wide, 6 ins. deep. Asc. 440 ft. over steep, rocky S. slope to

40.00 Set an iron post, 3 ft. long, 1 in. in diam., 15 ins. in the ground to bedrock, with a stone marked with a cross (X) deposited at base, and in a mound of stone to top, for  $\frac{1}{4}$  sec. cor., with brass cap marked

$\frac{1}{4}$

S35 | S36

. 1938

No bearing trees available.

Asc. 17 ft. over S. slope.

41.27 Point of spur, slopes SW.; desc. 133 ft. over steep W. slope to

52.10 Trail, bears NE. and SW.

52.80 Bottom of ravine, 3 lks. wide, course SW.; asc. 158 ft. over SE. slope.

57.25 Narrow spur, slopes SW., asc. 17 ft. over W. slope.

58.43 Desc. 53 ft. over steep W. slope.

63.70 Bottom of ravine, 4 lks. wide, course S. 30° W.; asc. 102 ft. over E. slope to

70.10 Enter bottom of same ravine, course S. 35° E. from N.; asc. 8 ft. in same to

70.90 Leave bottom of ravine, course S. from NW.; asc. 295 ft. over steep S. slope to

79.60 Set an iron post, 3 ft. long, 2 ins. in diam., over a cross (X) chiseled on exposed bedrock, and in a mound of stone to top, for witness cor. to cor. of secs. 25, 26, 35 and 36, with brass cap marked

Survey: Subdivision lines: Frac. T. 17 N., R. 9 W.

40

Chains

WC  
T17N .R9W  
S26 | S25  
S35 | S36.

1938

No bearing trees available.

Asc. 11 ft. over steep S. slope to

80.00 True point for cor. of secs. 25, 26, 35 and 36, on point of sharp, rocky spur, sloping SW., where it is impracticable to monument the cor., therefore establish witness cor. at 40 lks. S. 0° 01' E. as described above.

Land, mountainous.  
Soil, rocky, 3rd and 4th rates.  
Timber, pinyon and juniper. Sycamore and willow along Burro Creek.  
Undergrowth, oakbrush, laurel, catclaw and cacti.

From true point for cor. of secs. 25, 26, 35 and 36,  
East, on random line, bet. secs. 25 and 36.

40.00 Set temp.  $\frac{1}{4}$  sec. cor.

80.06 Intersect the cor. of secs. 25, 30, 31 and 36, on E. bdy. of the Tp., hereinbefore described.

Thence

West, on true line, bet. secs. 25 and 36.

Over mountainous land, thru scattering timber and undergrowth.

Desc. 52 ft. over steep W. slope to

1.36 Top of cliff, bears N. 10° W. and S. 10° E. facing W.  
Descend 50 ft. to

1.80 Foot of cliff. Thence across bed of Burro Creek, containing a stream of water, 40 lks. wide, 6 ins. deep, course S. 10° E.

2.76 Foot of cliff. Leave bed of Burro Creek. Asc. 50 ft. to

3.46 Top of cliff, bears N. 10° W. and S. 10° E. Asc. 326 ft. over steep E. slope to

14.51 Spur, slopes SE.; desc. 32 ft. over SW. slope.

16.03 Desc. 26 ft. over S. and SW. slopes.

26.45 Bottom of ravine, course SE.; asc. 298 ft. over steep E. slope.

34.08 Spur, slopes SE.; asc. 76 ft. over S. and SE. slopes to

40.03 Set an iron post, 3 ft. long, 1 in. in diam., 12 ins. in the ground to bedrock, with a stone marked with a cross (X) deposited at base, and in a mound of stone to top, for  $\frac{1}{4}$  sec. cor., with brass cap marked

$\frac{1}{4}$  S 25  
S 36

1938

Survey: Subdivision lines: Frac. T. 17 N., R. 9 W.

4208

41

Chains	
	No bearing trees available.
	Asc. 60 ft. over SE. slope.
44.74	Spur, slopes S.; desc. 245 ft. over steep SW. slope.
51.76	Bottom of ravine, course S. 10° E.; heads about 10 chs. N. Asc. 270 ft. over E. slope.
62.04	Spur, slopes S. 10° W.; desc. 74 ft. over W. slope.
63.76	Trail, N. 10° E. and S. 10° W.
65.75	Bottom of ravine, course S. 20° W.; heads about 3 chs. NE. Asc. 109 ft. over SE. slope.
75.06	Spur, slopes S.; desc. 11 ft. over SW. slope.
77.00	Head of drain, course S.; desc. along steep S. slope to
78.86	Trail, bears NW. and SE. Turns to SW. at about 8.00 chs. SE. of this point.
80.06	The true point for cor. of secs. 25, 26, 35 and 36.
	Land, mountainous.
	Soil, rocky, 4th rate.
	Timber, juniper and pinyon. Sycamore, willow and oak along Burro Creek.
	Undergrowth, oakbrush, laurel, buckbrush and cacti.
	From true point for cor. of secs. 25, 26, 35 and 36.
	N. 0° 01' W., bet. secs. 25 and 26.
	Over mountainous land, thru scattering timber and under- growth.
	Descend 60 ft. over W. slope to bottom of ravine.
0.30	A point 35 lks. W. from SW. end of a barbed wire fence, bearing NE. and SW. along top of spur, abutting against a cliff about 3 chs. distant. A gate in the fence is 20 lks. from the SW. end.
1.25	Trail, bears NW. and SE.
9.40	Same trail, bears NE. and SW.
14.10	Bottom of ravine, 3 lks. wide, course S. 25° W.; asc. 370 ft. over SE. slope to $\frac{1}{4}$ sec. cor.
24.80	Trail bears NE. and SW. Extends southwesterly to Webb's cabin in bottom of Happy Hollow Canyon.
27.60	A point 5 chs. W. from a well, pump, and 2 steel water troughs, in bottom of ravine. A pole corral, 150 lks. diam., bears NE. 150 lks. dist. from the well.
40.00	Set an iron post, 3 ft. long, 1 in. in diam., 27 ins. in the ground, for $\frac{1}{4}$ sec. cor., with brass cap marked
	$\frac{1}{4}$
	S26   S25
	1938
	No bearing trees available.

Survey: Subdivision lines: Frac. T. 17 N., R. 9 W.

42

Chains	Raise a mound of stone, $3\frac{1}{2}$ ft. base, 2 ft. high, W. of cor.
	Asc. 17 ft. over SE. slope.
43.00	Spur, slopes SW., from N. $10^{\circ}$ E.; asc. 20 ft. over W. slope to
52.69	Left rim of Happy Hollow Canyon, bears NE. and SW. Enter said canyqn. Desc. 167 ft. over NW. slope.
57.55	Bottom of ravine, course W.; heads about 8 chs. E. Asc. 125 ft. over steep SW. slope.
59.90	Trail, bears E. and W.
64.00	Point of short spur, slopes W.; desc. 222 ft. over NW. slope.
72.85	Bottom of ravine, 4 lks. wide, course S. $80^{\circ}$ W.; asc. 58 ft. over S. slope.
75.46	Point of spur, slopes S. $20^{\circ}$ W.; asc. 25 ft. over steep W. slope to
80.00	Set an iron post, 3 ft. long, 2 ins. in diam., over a cross (X) chiseled on exposed surface rock, and in a mound of stone to top, for cor. of secs. 23, 24, 25 and 26, with brass cap marked.
	<div>T17N R9W S23   S24 S26   S25</div> <div>1938.</div> <div>No bearing trees available.</div> <div>Land, mountainous. Soil, rocky, 4th rate. Timber, juniper, oak and pinyon. Undergrowth, oakbrush, buckbrush, catclaw and cacti..</div>
	East, on random line, bet.. secs. 24 and 25.
29.44	Triangulation point "A".. Continue chaining.
40.00	Set temp. $\frac{1}{2}$ sec. cor.
42.00	Ravine, course NE. Discontinue chaining owing to precipitous descent over cliffs into Hellzapopin. Canyon, and triangulate measurement of the remainder of the random sec. line as follows:
	<div>Designate 29.44 ch. station on random line as "A".</div> <div>A flag "B". set on E. bdy. of the Tp. 7 lks. N. of the cor. of secs. 19, 24, 25 and 30, is visible from triangulation point "A" and bears East therefrom, and is therefore at the termination of the random line. The vertical angle from "A" to "B" is <math>-11\frac{1}{4}^{\circ}</math>.</div> <div></div>

Survey: Subdivision lines: Frac. T. 17 N., R. 9 W.

4203

Chains	From "B" chain a base North, 26.99 chs. along the E. bdy. of the Tp. and set flag "C" which bears N. 62° 00' E. from "A".
	Included angles of the triangle "A-B-C" are: 28° 00', 90° 00' and 62° 00', the sum of which is 180° 00'.
	Chained dist. on random line to "A" = 29.44 chs. East Triang. dist. on random line "A" to "B" = 50.76 chs. East
	Total length of random line = 80.20 chs. East.
80.20	Intersect E. bdy. of the Tp. 7 lks. N. of the cor. of secs. 19, 24, 25 and 30, hereinbefore described. Thence N. 89° 57' W., on true line, bet. secs. 24 and 25. Over mountainous land, thru scattering timber and undergrowth. Chaining measurement to bottom of the Hellzapopin Canyon. Desc. 117 ft. over steep W. slope.
3.65	Bottom of ravine, 4 lks. wide, course SW. from N.; asc. 6 ft. over SE. slope.
6.44	Point of spur, slopes S.; desc. 50 ft. over SW. slope.
9.65	Bottom of Hellzapopin Canyon, 20 lks. wide, course SE., containing a stream of water, 2 lks. wide, 2 ins. deep. Discontinue chaining. Measurement to 38.20 ch. station by triangulation hereinbefore described. Asc. about 600 ft. over precipitous NE. slope.
28.50	(Approx.) Spur, slopes NE. from mountain about 20 chs. SW. Desc. about 100 ft. over NW. slope.
38.20	Bottom of ravine, course NE. Resume chaining. Asc. 40 ft. over steep E. slope to
40.10	Set an iron post, 3 ft. long, 1 in. in diam., 27 ins. in the ground, for 1/4 sec. cor., with brass cap marked <div><div><div><div><div></div><div>S</div><div>24</div></div><div></div><div>S</div><div>25</div></div></div><div>1938</div></div> No bearing trees available. Raise a mound of stone, 3 ft. base, 2 ft. high, N. of cor. Continue over mountainous land, in Hellzapopin Canyon. Asc. 420 ft. over steep E. slope to
50.76	Right or west rim of Hellzapopin Canyon, bears N. and SE. Leave canyon and mountainous land, and enter gently rolling land on mesa. Asc. gradually over E. slope.
51.20	Barbed wire fence, bears N. and SE.. Abuts against cliff on NW. side of mountain about 10 chs. SE. of this point.
55.44	Top of low divide, bears N. and SE.; desc. 73 ft. over gradual W. slope.

Survey: Subdivision lines: Frac. T. 17 N., R. 9 W.

44

Chains	
62.70	Trail, bears N. and S.
67.87	Left of E. rim of Happy Hollow Canyon, bears N. and S. 20° W. Leave mesa and enter mountainous land in canyon. Desc. 223 ft. over steep W. slope.
74.90	Bottom of ravine, course S. 20° W.; heads about 7 chs. NE. Asc. 45 ft. over SE. slope.
77.70	Spur, slopes S. 20° W.; desc. 75 ft. over steep W. slope to
80.20	The cor. of secs. 23, 24, 25 and 26.  Land, mountainous, broken and rolling. Soil, rocky, 4th rate. Timber, juniper, oak and pinyon. Sycamore and willow along bottom of the canyon. Undergrowth, oakbrush, laurel and buckbrush.
	N. 0° 01' W., bet. frac. secs. 23 and 24.  Over mountainous land, thru scattering timber and undergrowth in Happy Hollow Canyon, on the E. side of same.  Asc. 90 ft. over steep W. slope to
3.22	Discontinue chaining at this point owing to precipitous slopes and cliffs ahead.  Triangulate measurement as follows:  <div data-bbox="394 1427 565 1889" data-label="Diagram"> </div> <div data-bbox="768 1427 1461 1889" data-label="Text"> <p>Designate 3.22 ch. station on sec. line as "A".  Set flag "B" ahead on sec. line on E. rim of Happy Hollow Canyon, the vertical angle to which from "A" is +11°.  From "B" double chain a base S. 46° 16' E., along rim of canyon and set flag "C" which bears N. 17° 12' E. from "A". Mean of the two sets of chaining of the base "B-C" is 4.995 chs.</p> </div>
	Included angles of the triangle "A-B-C" are: 17° 13', 46° 15', and 116° 32', the sum of which is 180° 00'.  Chained dist. to point "A" = 3.22 chs. N. 0° 01' W. Triang. dist. "A-B" = 15.10 chs. N. 0° 01' W. Total dist. sec. cor. to "B" = 18.32 chs. N. 0° 01' W.
8.00	(Approx.) Bend in bottom of ravine, 25 lks. wide, course S. 20° W. from N. 20° W.; about 60 ft. below station "A". Asc. about 250 ft. over steep broken SW. slope to
18.32	Triang. point "B" at rim of canyon and mesa, bears NW. and SE. Leave canyon. Resume chaining and continue line and measurement. Over rolling land, on mesa. Asc. 26 ft. over SW. slope.
20.54	Desc. 48 ft. over NW. slope.
30.00	Bottom of same ravine, 10 lks. wide, course S. 70° W. from E.; asc. 12 ft. over S. slope to

Survey: Subdivision lines: Frac. T. 17 N., R. 9 W.

45

## Chains

30.52

Intersect S. line of the bdy. of Luis Maria Baca Float No. 5.

Set an iron post, 3 ft. long, 2 ins. in diam., 27 ins. in the ground, for closing cor. of frac. secs. 23 and 24, with brass cap marked

LMBF No 5	
S23	S24
T17N	R9W
CC	

1938

No bearing trees available.

Raise a mound of stone, 3 ft. base, 2 ft. high, S. of cor.

From point of intersection the reestablished 43rd mile mon. of the bdy. of Luis Maria Baca Float No. 5 bears N. 87° 16' E., 20.23 chs. dist., and from same point the SW. cor. of the L.M.B.F. No. 5 bears S. 87° 16' W., 25.04 chs. dist. Both of same hereinbefore described.

Land, mountainous, broken and rolling.

Soil, rocky, 4th rate.

Timber, juniper, oak and pinyon.

Undergrowth, oakbrush, laurel, buckbrush and catclaw.

The std. cor. of secs. 34 and 35, on S. bdy. of the Tp. (4th Std. Par. N.) is an iron post, 2 ins. in diam., projecting 26 ins. above ground, firmly set in ground and mound of stone, and marked on brass cap as described in the official record. No accessories.

Thence

N. 0° 01' W., bet. secs. 34 and 35.

Over mountainous land, thru scattering undergrowth.

Asc. 158 ft. over steep SE. slope to

5.18

Top of cliff, 10 ft. high, bearing NE. and SW., and rim of mesa. Leave mountainous and enter nearly level grassy land on mesa, known as Southeast Mesa.

7.70

Trail, bears NE. and SW.

40.00

Set an iron post, 3 ft. long, 1 in. in diam., 27 ins. in the ground, for  $\frac{1}{4}$  sec. cor., with brass cap marked

 $\frac{1}{4}$ 

S34 | S35

1938

Raise a mound of stone, 3 ft. base, 2 ft. high, W. of cor.

A lone juniper, 10 ins. diam., on rim of mesa where trail descends into Burro Creek Canyon, bears N. 83° 26' E., 18.14 chs. dist.

Continue over nearly level grassy land on Southeast Mesa, thru scattering undergrowth.



Survey: Subdivision lines: Frac. T. 17 N., R. 9 W.

46

Chains	
80.00	Set an iron post, 3 ft. long, 2 ins. in diam., 28 ins. in the ground, for cor. of secs. 26, 27, 34 and 35, with brass cap marked
	<div>T17N R9W</div> <div>S27   S26</div> <div>S34   S35</div>
	1938
	Raise a mound of stone, 3 ft. base, 2 ft. high, W. of cor.
	Land, mountainous and nearly level.
	Soil, gravelly and rocky clay, 3rd rate.
	Timber, none.
	Undergrowth, oakbrush, catclaw and cacti.
	East, on random line, bet. secs. 26 and 35.
40.00	Set temp. 1/4 sec. cor.
80.08	Intersect N. and S. line 2 lks. S. of the true point for cor. of secs. 25, 26, 35 and 36 (W.C. 0.40 chs. S. 0° 01'E.)
	From true point for sec. cor.
	S. 89° 59' W., on true line, bet. secs. 26 and 35.
	Over mountainous land, thru scattering timber and undergrowth.
	Desc. 127 ft. over W. slope.
5.30	Bottom of ravine, 2 lks. wide, course S.; asc. 29 ft. over SE. slope.
7.11	Spur, slopes S.; saddle in same bears N. 5.00 chs. dist. Asc. 35 ft. over N. slope.
18.29	Desc. 435 ft. over steep NW. slope to bottom of canyon.
19.60	From this point W.D. Webb's cabin bears N. 13° W.
24.43	Same cabin, bears N. 16° E., in bottom of Happy Hollow Canyon. Near the cabin the bottom of canyon turns from N. 14° E. to S. 60° W.
28.20	Nearly vertical cliff, 25 ft. high, bearing NE. and SW., facing NW.
34.00	Trail, bears NE. and S.
36.30	Bottom of Happy Hollow Canyon, 40 lks. wide, course SW., containing a stream of water 6 lks. wide, 3 ins. deep, joined at 30 lks. NE. of this point by another stream 3 lks. wide, 2 ins. deep, course S. from a side canyon to the N.
	Asc. 116 ft. over steep SE. slope to
40.04	Set an iron post, 3 ft. long, 1 in. in diam., 27 ins. in the ground, for 1/4 sec. cor., with brass cap marked
	<div>1/4 S 26</div> <div>S 35</div>
	1938

Survey: Subdivision lines: Frac. T. 17 N., R. 9 W.

Chains	No bearing trees available.  Raise a mound of stone, 3 ft. base, 2 ft. high, N. of cor.  Point of spur sloping E., bears N. 100 lks. dist.  Asc. 630 ft. over steep SE. and E. slopes to right rim of Happy Hollow Canyon.
52.10	Cliff, 50 ft. high, bears N. and S., facing E.
53.50	Cliff, 60 ft. high, bears N. and S., facing E.
56.67	Right or W. rim of Happy Hollow Canyon, bears N. 30° W. and S. 10° W. Leave canyon and mountainous land, and enter gently rolling and nearly level, grassy land on Southeast Mesa, ascending gradually over SE. and S. slopes to
80.08	The cor. of secs. 26, 27, 34 and 35.  Land, mountainous, broken, gently rolling and nearly level. Soil, gravelly and rocky, 3rd and 4th rates. Timber, pinyon and juniper. Sycamore and willow along bottom of canyon. Undergrowth, oakbrush, laurel, catclaw and cacti.
	N. 0° 01' W., bet. secs. 26 and 27.  Over gently rolling and nearly level grassy land, on Southeast Mesa, thru scattering undergrowth.  Asc. gradually over S. slope.
40.00	Set an iron post, 3 ft. long, 1 in. in diam., 27 ins. in the ground, for $\frac{1}{4}$ sec. cor., with brass cap marked  $\frac{1}{4}$  S27   S26  1938  Raise a mound of stone, 3 ft. base, 2 ft. high, W. of cor.  Continue over gently rolling and nearly level, grassy land, on Southeast Mesa, thru scattering undergrowth. Asc. gradually over SE. slope..
74.00	Draw, course SE.; asc. 34 ft. over SE. slope to
80.00	Set an iron post, 3 ft. long, 2 ins. in diam., 24 ins. in the ground to bedrock, and in a mound of stone to top, for cor. of secs. 22, 23, 26 and 27, with brass cap marked  T17N R9W S22   S23 S27   S26  1938  Raise a mound of stone, 3 ft. base, 2 ft. high, W. of cor.  Land, gently rolling and nearly level. Soil, gravelly and rocky, 3rd and 4th rates.

Survey; Subdivision lines: Frac. T. 17 N., R. 9 W.

48

Chains	<p>Timber, none. Undergrowth, oakbrush, catclaw and cacti.</p>
	<p>N. 89° 59' E., on random line, bet. secs. 23 and 26.</p>
40.00	<p>Set temp. <math>\frac{1}{4}</math> sec. cor.</p>
79.98	<p>Intersect N. and S. line 2 lks. N. of the cor. of secs. 23, 24, 25 and 26, Thence West, on true line, bet. secs. 23 and 26. Over mountainous land, thru scattering timber and undergrowth. Desc. 118 ft. over steep, rocky W. slope to</p>
4.38	<p>Bottom of Happy Hollow Canyon, 40 lks. wide, course S. from N. 10° W. Big Spring, bears South, about 6 chs. dist. Asc. 411 ft. over steep E. slope to</p>
14.48	<p>Right or W. rim of Happy Hollow Canyon, bears N. and S. Leave canyon and mountainous land, and enter gently rolling and nearly level, grassy land on a point of Southeast Mesa, bearing N. and S.</p>
30.97	<p>Left rim of canyon, bears N. and S. Leave mesa and enter mountainous land in canyon. Desc. 185 ft. over steep, rocky W. slope.</p>
37.88	<p>Wash, 20 lks. wide, course S., in bottom of canyon. Asc. 112 ft. over steep, rocky E. slope to</p>
39.99	<p>Set an iron post, 3 ft. long, 1 in. in diam., 18 ins. in the ground to bedrock; with a stone marked with a cross (X) deposited at base, and in a mound of stone to top, for <math>\frac{1}{4}</math> sec. cor., with brass cap marked</p>
	<p><math>\frac{1}{4} \frac{S \ 23}{S \ 26}</math> 1938 No bearing trees available. Asc. 71 ft. over steep E. slope to</p>
43.56	<p>Right rim of canyon; bears N. and S. Leave canyon and mountainous land and enter gently rolling grassy land on Southeast Mesa.</p>
58.05	<p>Desc. 26 ft. over gradual SW. slope.</p>
70.38	<p>Bottom of draw, 8 lks. wide, course SE.; enter heavily rolling land. Asc. 83 ft. over NE. slope to</p>
77.95	<p>Top of ascent, bears NW. and SE. Thence over gently rolling grassy land on Southeast Mesa. Asc. gradually over SE. slope to</p>
79.98	<p>The cor. of secs. 22, 23, 26 and 27. Land, mountainous, gently and heavily rolling. and nearly level. Soil, gravelly and rocky clay, 3rd and 4th rates. Timber, juniper, pinyon, and oak. Sycamore and Willow along Happy Hollow Canyon. Undergrowth, oakbrush, laurel, catclaw and cacti.</p>

Survey: Subdivision lines: Frac. T. 17 N., R. 9 W.

Chains	North, on sectional guide meridian, bet. secs. 22 and 23. Over gently rolling, grassy land, on Southeast Mesa, thru scattering undergrowth. Asc. 107 ft. over gradual SE. slope.
29.64	Draw, course S. 20° E.; asc. 41 ft. over gradual S. slope to
40.00	Set an iron post, 3 ft. long, 1 in. in diam., 16 ins. in the ground to bedrock, with a stone marked with a cross (X) deposited at base, and in a mound of stone to top, for $\frac{1}{4}$ sec. cor., with brass cap marked <div>S22   S23 1938</div>
	Continue over gently rolling, grassy land, on Southeast Mesa, thru scattering undergrowth. Asc. 30 ft. over gradual S. slope to
45.00	Leave Southeast Mesa. Enter heavily rolling and mountainous land. Asc. 158 ft. over S. slope.
61.08	Spur, slopes E. from NW.; desc. 154 ft. over NE. slope.
69.98	Bottom of ravine, 10 lks. wide, course SE.; asc. 169 ft. over SW. slope to
80.00	Set an iron post, 3 ft. long, 2 ins. in diam., 12 ins. in the ground to bedrock, with a stone marked with a cross (X) deposited at base, and in a mound of stone to top, for cor. of secs. 14, 15, 22 and 23, with brass cap marked <div>T17N R9W S15   S14 S22   S23 1938</div>
	Land, gently and heavily rolling, and mountainous. Soil, gravelly and rocky clay, 3rd and 4th rates. Timber, none. Undergrowth, oakbrush.
	East, bet. frac. secs. 14 and 23. Over mountainous land, thru scattering undergrowth. Asc. 44 ft. over SW. slope.
6.35	Spur ridge, bears N. and SE.; desc. 166 ft. over NE. slope.
13.27	Wash, 20 lks. wide, in bottom of ravine, course SE. Asc. 118 ft. over SW. slope.
23.62	Spur, slopes S. 30° E.; desc. 133 ft. over E. slope.
30.52	Bottom of ravine, 10 lks. wide, course SE. Enter scattering timber. Asc. 92 ft. over steep SW. slope to
34.35	Rim of ravine, bears NW. and SE. Leave mountainous and enter rolling land. Asc. 42 ft. over W. slope to

Survey: Subdivision lines: Frac. T. 17 N., R. 9 W.

50

Chains

40.00 Set an iron post, 3 ft. long, 1 in. in diam., 27 ins. in the ground, for  $\frac{1}{4}$  sec. cor., with brass cap marked

$\frac{1}{4}$   $\frac{S\ 14}{S\ 23}$

1938

from which

A juniper, 6 ins. diam., bears N.  $63^\circ$  E., 236 lks. dist., marked  $\frac{1}{4}$  S14 BT.

A juniper, 10 ins. diam., bears S.  $75^\circ$  E., 92 lks. dist., marked  $\frac{1}{4}$  S23 BT.

Asc. 35 ft. over gradual W. slope.

50.00 Low spur, slopes S.; desc. 19 ft. over E. slope to

56.72 Intersect E. bdy. of the Tp. ( W. line of bdy. of Luis Maria Baca Float No. 5).

Set an iron post, 3 ft. long, 2 ins. in diam., 23 ins. in the ground to bedrock, and in a mound of stone to top, for closing cor. of frac. secs. 14 and 23, with brass cap marked

CC  $\frac{T17N}{S14}$  | LM  
 $\frac{S23}{R9W}$  | BF  
 No 5

1938

No bearing trees available.

Raise a mound of stone, 4 ft. base,  $2\frac{1}{2}$  ft. high, W. of cor.

From the point of intersection the reestablished 44th mile mon. of the bdy. of Luis Maria Baca Float No. 5, hereinbefore described, bears S.  $2^\circ\ 04'$  W., 18.36 chs. dist.

Land, mountainous and rolling.

Soil, gravelly and rocky clay, 3rd and 4th rates.

Timber, juniper.

Undergrowth, oakbrush.

From cor. of secs. 14, 15, 22 and 23

North, on sectional guide meridian, bet. secs. 14 and 15.

Over mountainous land, thru scattering undergrowth.

Asc. 35 ft. over SW. slope.

3.95 Desc. 6 ft. over W. slope.

8.97 Asc. 212 ft. over W. slope.

25.50 Desc. 5 ft. over W. slope.

30.00 Asc. 36 ft. over W. slope to

40.00 Set an iron post, 3 ft. long, 1 in. in diam., 16 ins. in the ground to bedrock, with a stone marked with a cross (X) deposited at base, and in a mound of stone to top, for  $\frac{1}{4}$  sec. cor., with brass cap marked



Survey: Subdivision lines: Frac. T. 17 N., R. 9 W.

52

Chains	from which								
	A juniper, 24 ins. diam., bears N. $21\frac{1}{2}^{\circ}$ E., 99 lks. dist., marked $\frac{1}{4}$ S11 BT.								
	A juniper, 12 ins. diam., bears S. $67^{\circ}$ W., 72 lks. dist., marked $\frac{1}{4}$ S14 BT..								
	Continue over gently rolling land. Desc. 20 ft. over E. slope to								
42.89	Enter mountainous land and dense undergrowth. Desc. 298 ft. over E. slope.								
57.14	Bottom of ravine, course S.; asc. 75 ft. over steep W. slope to								
59.50	Intersect the E. bdy. of the Tp. ( W. line of bdy. of Luis Maria Baca Float No. 5). Set an iron post, 3 ft. long, 2 ins. in diam., 27 ins. in the ground, for closing cor. of frac. secs. 11 and 14, with brass cap marked								
	<table> <tr> <td>T17N</td><td>LM</td></tr> <tr> <td>CC—S11</td><td>BF</td></tr> <tr> <td>S14</td><td>No 5</td></tr> <tr> <td>R9W</td><td></td></tr> </table>	T17N	LM	CC—S11	BF	S14	No 5	R9W	
T17N	LM								
CC—S11	BF								
S14	No 5								
R9W									
	1938								
	No bearing trees available.								
	Raise a mound of stone, $3\frac{1}{2}$ ft. base, 3 ft. high, W. of cor.								
	From the point of intersection the reestablished 45th mile mon. of the bdy. of the Luis Maria Baca Float No. 5, hereinbefore described, bears S. $1^{\circ} 59'$ W., 18.45 chs. dist.								
	Land, mountainous, gently rolling and nearly level. Soil, rocky, 4th rate. Timber, juniper. Undergrowth, oakbrush.								
	From the cor. of secs. 10, 11, 14 and 15, North, on sectional guide meridian, bet. secs. 10 and 11. Over heavily rolling land, thru scattering timber and undergrowth. Asc. 118 ft. over E. slope.								
29.95	Desc. 23 ft. over E. slope to								
40.00	Set an iron post, 3 ft. long, 1 in. in diam., 18 ins. in the ground, to bedrock, and in a mound of stone to top, for $\frac{1}{4}$ sec. cor., with brass cap marked								
	$\frac{1}{4}$								
	S10   S11								
	1938								
	from which								
	A juniper fork, 9 ins. diam., bears N. $43\frac{1}{4}^{\circ}$ E., 66 lks. dist., marked $\frac{1}{4}$ S11 BT.								

Survey: Subdivision lines: Frac. T. 17 N., R. 9 W.

Chains	<p>A juniper, 15 ins. diam., bears S. <math>36\frac{1}{2}^{\circ}</math> W., 83 lks. dist., marked <math>\frac{1}{4}</math> S10 BT.</p> <p>Desc. slightly over E. slope to</p> <p>40.30 Head of draw, course S. <math>70^{\circ}</math> E.; asc. 63 ft. over SE. slope to</p> <p>50.00 Rim of mesa, bears NE. and SW. Thence over gently rolling grassy land, on mesa. Asc. 65 ft. over gradual SE. slope.</p> <p>75.00 Low divide, bears NE. and SW.; desc. 5 ft. over NW. slope to</p> <p>80.00 Set an iron post, 3 ft. long, 2 ins. in diam., 24 ins. in the ground to bedrock, with a stone marked with a cross (X) deposited at base, and in a mound of stone to top, for cor. of secs. 2, 3, 10 and 11, with brass cap marked.</p> <div><div>T17N R9W</div><div>S3   S2</div><div><div>S10</div><div>S11</div></div></div> <p>1938</p> <p>No bearing trees available..</p> <p>Raise a mound of stone, 3 ft. base, 2 ft. high, W. of cor.</p> <p>Land, heavily and gently rolling. Soil, gravelly and rocky clay, 3rd and 4th rates. Timber, juniper. Undergrowth, oakbrush.</p>
	<p>East, bet. frac. secs. 2 and 11.</p> <p>Over gently rolling and nearly level, grassy land, on mesa thru scattering undergrowth and very scattering timber.</p> <p>Asc. 6 ft. over gradual NW. slope.</p> <p>6.00 Low divide, bears NE. and SW.; desc. 34 ft. over SE. slope to</p> <p>40.00 Set an iron post, 3 ft. long, 1 in. in diam., 6 ins. in the ground to bedrock, with a stone marked with a cross (X) deposited at base, and in a mound of stone to top, for <math>\frac{1}{4}</math> sec. cor., with brass cap marked</p> <div><div><math>\frac{1}{4}</math></div><div><div>S 2</div><div>S 11</div></div></div> <p>1938</p> <p>No bearing trees available.</p> <p>Slopes become steeper. Desc. 43 ft. over SE. slope.</p> <p>46.97 Asc. 10 ft. over SW. slope.</p> <p>48.56 Head of spur ridge, slopes SE. from mesa. Leave mesa and enter rolling land. Desc. 76 ft. over NE. slope.</p> <p>59.09 Wash, 10 lks. wide, course S. <math>30^{\circ}</math> E.; asc. 25 ft. over SW. slope to</p>



CCCV 4558

Survey: Subdivision lines: Frac. T. 17 N., R. 9 W.

54

Chains

62.17

Intersect the E. bdy. of the Tp. ( W. line of the bdy. of Luis Maria Baca Float No. 5)  
Set an iron post, 3 ft. long, 2 ins. in diam., 27 ins. in the ground, for closing cor. of frac. secs. 2 and 11, with brass cap marked .

T17N	LM
S2	BF
S11	No 5
R9W	

1938

from which

A juniper, 12 ins. diam., bears S. 26 $\frac{1}{2}$ ° W., 181 lks. dist., marked T17N R9W S11 CC BT.

A juniper, 6 ins. diam., bears N. 11° W., 129 lks. dist., marked T17N R9W S2 CC BT.

From point of intersection the reestablished 46th mile mon. on the bdy. of Luis Maria Baca Float No. 5, hereinbefore described, bears S. 2° 07' W., 18.63 chs. dist.

Land, gently rolling. nearly level, and rolling.  
Soil, gravelly and rocky clay, 3rd and 4th rates.  
Timber, juniper.  
Undergrowth, oakbrush.

From the cor. of secs. 2, 3, 10 and 11,

North, on sectional guide meridian, bet. secs. 2 and 3.

Over gently rolling, grassy land, on mesa thru scattering timber and undergrowth.

Desc. 38 ft. over gradual NW. slope to

14.29 Rim of mesa, bears NE. and SW. Leave mesa and enter heavily rolling land. Desc. 74 ft. over NW. slope.

22.80 Asc. 18 ft. over SW. slope.

28.00 Spur, slopes NW.; desc. 86 ft. over N. slope.

37.37 Rocky wash, 10 lks. wide, course NW.; asc. 3 ft. over SW. slope to

40.00 Set an iron post, 3 ft. long, 1 in. in diam., 27 ins. in the ground, for  $\frac{1}{4}$  sec. cor., with brass cap marked

$\frac{1}{4}$

S3 | S2

1938

from which

A juniper, 6 ins. diam., bears N. 4° E.; 279 lks. dist., marked  $\frac{1}{4}$  S2 BT.

A white oak, 6 ins. diam., bears S. 34° W., 112 lks. dist., marked  $\frac{1}{4}$  S3 BT.

Continue over rolling land thru scattering timber and undergrowth.

Asc. 12 ft. over SW. slope to

Survey: Subdivision lines: Frac. T. 17 N., R. 9 W.

4108

55

Chains	
42.80	Wash, 10 lks. wide, course SW.; asc. 144 ft. over SW. slope.
54.42	Asc. 40 ft. over W. slope.
71.40	Desc. 18 ft. over NW. slope.
75.20	Head of draw, course W.; asc. 10 ft. over SW. slope to
78.75	Intersect N. bdy. of the Tp. Set an iron post, 3 ft. long, 2 ins. in diam., 27 ins. in the ground, for closing cor. of secs. 2 and 3, with brass cap marked
	<div style="text-align: center;">           T18N R9W            S35            S3   S2            T17N R9W            CC            1938         </div>
	from which
	A juniper, 4 ins. diam., bears S. $50\frac{1}{4}^{\circ}$ E., 34 lks. dist., marked BT only.
	A juniper, 20 ins. diam., bears S. $65\frac{3}{4}^{\circ}$ W., 226 lks. dist., marked T17N R9W S3 CC BT.
	From point of intersection the cor. of secs. 34 and 35, Frac. T. 18 N., R. 9 W., bears N. $89^{\circ} 45'$ W., 28.89 chs. dist., and from same point the S. $\frac{1}{4}$ sec. cor. of sec. 35 bears S. $89^{\circ} 45'$ E., 11.21 chs. dist. Both cors. hereinbefore described.
	Land, gently and heavily rolling. Soil, gravelly and rocky clay, 3rd and 4th rates. Timber, juniper. Undergrowth, oakbrush and laurel.
	The std. cor. of secs. 33 and 34, on S. bdy. of the Tp., (4th Std. Par. N.), is an iron post, 2 ins. in diam., projecting 14 ins. above ground, firmly set in ground and mound of stone, marked on brass cap as described in the official record, and witnessed by a mound of stone N. No bearing trees.
	Thence
	N. $0^{\circ} 02'$ W., bet. secs. 33 and 34.
	Over mountainous land, thru scattering undergrowth.
	Asc. 92 ft. over steep E. slope on W. side of canyon.
15.57	Rim of canyon, bears NE. and S. $10^{\circ}$ W. Leave canyon and enter nearly level and gently rolling grassy land on mesa.
40.00	Set an iron post, 3 ft. long, 1 in. in diam., 27 ins. in the ground, for $\frac{1}{4}$ sec. cor., with brass cap marked
	<div style="text-align: center;"> <math>\frac{1}{4}</math>            S33   S34            1938         </div>

BOOK 1218

Survey: Subdivision lines: Frac. T. 17 N., R. 9 W.

56

Chains	<p>Raise a mound of stone, <math>3\frac{1}{2}</math> ft. base, 2 ft. high, W. of cor.</p> <p>Over gently rolling grassy land, on mesa.</p> <p>Desc. 20 ft. over gradual NE. slope to</p> <p>44.49 Top of cliff, 15 ft. high, and rim of mesa, bears NW. and SE. Leave mesa and enter mountainous land. Desc. 83 ft. over steep NE. slope.</p> <p>48.90 Bottom of gulch, 20 lks. wide, course SE.; asc. 76 ft. over SW. slope.</p> <p>52.42 Point of spur, slopes SW.; desc. 44 ft. over NW. slope.</p> <p>57.60 Bottom of same gulch, course SW. from N. Asc. 35 ft. along bottom of gulch to</p> <p>63.30 Leave bottom of gulch, course S. from N. 20° E. Asc. 40 ft. over SE. slope.</p> <p>66.00 Point of short spur, slopes E.; desc. 20 ft. over NE. slope.</p> <p>70.00 Bottom of same gulch, 15 lks. wide, course S. 10° E.; asc. 94 ft. over SW. slope to</p> <p>74.96 Rim of gulch, bears N. 10° W. and S. 10° E. Leave gulch and mountainous land, and enter rolling land. Asc. gradually over W. slope to</p> <p>80.00 Set an iron pbst, 3 ft. long, 2 ins. in diam., 24 ins. in the ground to bedrock, and in a mound of stone to top, for cor. to secs. 27, 28, 33 and 34, with brass cap marked</p> <div><div>T17N R9W</div><div>S28   S27</div><div>S33   S34</div></div> <p>1938</p> <p>Raise a mound of stone, <math>3\frac{1}{2}</math> ft. base, 2 ft. high, W. of cor.</p> <p>Land, mountainous, nearly level and gently rolling. Soil, gravelly and rocky clay, 3rd and 4th rates. Timber, none. Undergrowth, oakbrush, catclaw and cacti.</p>
	<p>East, on random line, bet. secs. 27 and 34.</p> <p>40.00 Set temp. <math>\frac{1}{4}</math> sec. cor.</p> <p>80.00 Intersect N. and S. line 5 lks. S. of the cor. to secs. 26, 27, 34 and 35.</p> <p>Thence</p> <p>S. 89° 58' W., on true line, bet. secs. 27 and 34.</p> <p>Over nearly level and gently rolling grassy land, on Southeast Mesa, thru scattering undergrowth.</p> <p>22.20 Draw, course SW.</p> <p>40.00 Set an iron post, 3 ft. long, 1 in. in diam., 27 ins. in the ground, for <math>\frac{1}{4}</math> sec. cor., with brass cap marked</p>

Survey: Subdivision lines: Frac. T. 17 N., R. 9 W.

57

Chains	
	$\frac{1}{4} \frac{S \ 27}{S \ 34}$
	1938
	Raise a mound of stone, 3 ft. base, 2 ft. high, N. of cor.
	Continue over nearly level and gently rolling, grassy land, on Southeast Mesa, thru scattering undergrowth.
60.00	Leave Southeast mesa; bears N. and S. and enter rolling land. Desc. 54 ft. over W. slope.
66.35	Bottom of draw, 5 lks. wide, course S.; asc. 20 ft. over gradual E. slope to
72.00	Low spur, slopes S.; desc. slightly over W. slope to
80.00	The cor. of secs. 27, 28, 33 and 34.
	Land, nearly level and gently rolling. Soil, gravelly clay, 3rd rate. Timber, none. Undergrowth, catclaw and cacti.
	N. 0° 02' W., bet. secs. 27 and 28.
	Over rolling land, thru scattering undergrowth.
	Asc. slightly over W. slope.
2.10	Bottom of rocky draw, course S. 10° W.; asc. gradually over E. slope to
3.80	Same draw, course S. 30° E.; asc. 15 ft. over W. slope to
10.00	Same draw, course S. 25° W. Asc. 45 ft. over E. slope to
21.67	Same draw, course S. 10° E. Asc. 100 ft. over SW. slope to
40.00	Set an iron post, 3 ft. long, 1 in. in diam., 16 ins. in the ground to bedrock, with a stone marked with a cross (X) deposited at base, and in a mound of stone to top, for $\frac{1}{4}$ sec. cor., with brass cap marked
	$\frac{1}{4}$
	S28   S27
	1938
	Continue over rolling land, thru scattering undergrowth.
	Asc. 102 ft. over SW. slope.
63.00	Desc. 34 ft. over W. slope.
68.15	Same draw, course SW.; asc. 66 ft. over SE. slope.
74.35	Thence along E. slope, ascending gradually to
80.00	Set an iron post, 3 ft. long, 2 ins. in diam., 16 ins. in the ground to bedrock, with a stone marked with a cross (X) deposited at base, and in a mound of stone to top, for cor. of secs. 21, 22, 27 and 28, with brass cap marked

Survey: Subdivision lines: Frac. T. 17 N., R. 9 W.

58

Chains	<div>T17N   R9W S21   S22 S28   S27</div> <div>1938</div> <div>Land, rolling. Soil, gravelly and rocky clay, 3rd and 4th rates. Timber, none. Undergrowth, oakbrush and cacti.</div>
	<div>N. 89° 58' E., on random line, bet. secs. 22 and 27.</div>
40.00	Set temp: ¼ sec. cor.
79.98	Intersect N. and S. line 7 lks. N. of the cor. of secs. 22, 23, 26 and 27.
	Thence
	<div>N. 89° 59' W., on true line, bet. secs. 22 and 27.</div> <div>Over gently rolling, grassy land, on Southeast Mesa, thru scattering undergrowth.</div> <div>Asc. gradually over SE. slope.</div>
5.10	Draw, course SE.; asc. 135 ft. over gradual SE. slope.
35.00	Low spur, slopes S.; desc. 18 ft. over SW. slope to
39.99	Set an iron post, 3 ft. long, 1 in. in diam., 27 ins. in the ground, for ¼ sec. cor., with brass cap marked
	<div>¼ <div>S 22 S 27</div></div> <div>1938</div>
	<div>Leave Southeast Mesa, and enter heavily rolling land.</div> <div>Desc. 131 ft. over SW. slope.</div>
49.68	Draw, course S.; asc. 66 ft. over SE. slope.
55.79	Thence across top of spur sloping SW.
59.65	Leave top of spur, desc. 71 ft. over SW. slope.
67.00	Draw, course SW., asc. 18 ft. over SE. slope.
72.00	Point of spur, slopes SW.; desc. 60 ft. over W. slope.
78.00	Bottom of draw, 20 lks. wide, course S.; asc. 12 ft. over E. slope to
79.98	The cor. of secs. 21, 22, 27 and 28.
	<div>Land, gently and heavily rolling. Soil, gravelly and rocky clay, 3rd and 4th rates. Timber, none. Undergrowth, oakbrush and cacti.</div>
	<div>N. 0° 01' W., bet. secs. 21 and 22.</div> <div>Over heavily rolling land, thru very scattering timber and scattering undergrowth. Asc. 109 ft. over E. slope.</div>
18.50	Desc. 24 ft. over NE. slope.

Survey: Subdivision lines: Frac. T. 17 N., R. 9 W.

Chains	
21.60	Bottom of draw, course SE.; asc. 185 ft. over SE. slope to
40.00	Set an iron post, 3 ft. long, 1 in. in diam., 16 ins. in the ground to bedrock, with a stone marked with a cross (X) deposited at base, and in a mound of stone to top, for $\frac{1}{4}$ sec. cor., with brass cap marked
	<div><div><div><div></div><div></div><div></div><div></div></div><div><div></div><div></div><div></div><div></div></div><div><div></div><div></div><div></div><div></div></div><div><div></div><div></div><div></div><div></div></div></div><div><div></div><div></div><div></div><div></div></div><div><div></div><div></div><div></div><div></div></div><div><div></div><div></div><div></div><div></div></div></div> <div>S21   S22</div>

BOOK 2213

Survey: Subdivision lines: Frac. T. 17 N., R. 9 W.

60

Chains	
	$\frac{1}{4} \begin{array}{r} S \ 15 \\ S \ 22 \end{array}$
	1938
	Continue over gently rolling land, thru scattering undergrowth.
	Desc. 149 ft. over S. and SW. slopes.
71.00	Draw, course S.; asc. 30 ft. over SE. slope to
79.98	The cor. of secs. 15, 16, 21 and 22.
	Land, mountainous and rolling. Soil, gravelly and rocky clay, 3rd and 4th rates. Timber, none. Undergrowth, oakbrush.
	N. 0° 01' W., bet. secs. 15 and 16.
	Over rolling land, thru very scattering timber and scattering undergrowth.
	Asc. 300 ft. over SE. and S. slopes to
40.00	Set an iron post, 3 ft. long, 1 in. in diam., 18 ins. in the ground to bedrock, and in a mound of stone to top, for $\frac{1}{4}$ sec. cor., with brass cap marked
	$\frac{1}{4}$
	S16   S15
	1938
	from which
	A juniper, 14 ins. diam., bears S. 85 $\frac{1}{2}$ ° E., 193 lks. dist., marked $\frac{1}{4}$ S15 BT.
	A juniper, 12 ins. diam., bears S. 9° W., 365 lks. dist., marked $\frac{1}{4}$ S16 BT.
	Continue over rolling grassy land, thru very scattering timber and scattering undergrowth. Asc. 146 ft. over S. slope.
64.87	Flat-topped ridge, bears W. and N. 70° E. Thence across top of ridge.
67.85	Leave top of ridge. Desc. 60 ft. over gradual N. slope to
80.00	Set an iron post, 3 ft. long, 2 ins. in diam., 27 ins. in the ground, for cor. of secs. 9, 10, 15 and 16, with brass cap marked
	$\begin{array}{r} T17N \ R9W \\ S9 \ S10 \\ S16 \ S15 \end{array}$
	1938
	from which
	A juniper, 26 ins. diam., bears S. 49 $\frac{1}{4}$ ° E., 277 lks. dist., marked T17N R9W S15 BT.
	No other bearing tree available.
	Raise a mound of stone, 3 ft. base, 2 ft. high, W. of cor.

Survey: Subdivision lines: Frac. T. 17 N., R. 9 W.

61

Chains	Land, rolling. Soil, gravelly and rocky clay, 3rd and 4th rates. Timber, juniper. Undergrowth, oakbrush.
	S. 89° 59' E., on random line, bet. secs. 10 and 15.
40.00	Set temp. $\frac{1}{4}$ sec. cor.
79.98	Intersect N. and S. line 5 lks. S. of the cor. of secs. 10, 11, 14 and 15.
	Thence
	S. 89° 59' W., on true line, bet. secs. 10 and 15.
	Over rolling land, thru scattering timber and undergrowth.
	Asc. 35 ft. over E. slope.
7.00	Ridge, bears N. 15° W., and S. 15° E.; desc. 67 ft. over W. slope.
18.40	Center of earthen water tank, about 8 chs. long, and 5 chs. wide, surrounded by a heavy woven wire fence 5 ft. high, with a gate in center of E. side, and another gate at SW. cor. The S. end of tank is 1 ch. S. of line and the N. end 7 chs. N., and is constructed in a draw, course S. 20° W., from N.
	Asc. 60 ft. over E. slope.
31.00	Spur, slopes S. 10° W.; desc. 15 ft. over W. slope.
38.00	Draw, course S. from NE., near head. Asc. slightly over SE. slope to
39.99	Set an iron post, 3 ft. long, 1 in. in diam., 3 ins. in the ground to bedrock, and in a mound of stone to top, for $\frac{1}{4}$ sec. cor., with brass cap marked
	$\frac{1}{4} \begin{array}{l} S 10 \\ S 15 \end{array}$
	1938
	from which
	A juniper, 5 ins. diam., bears S. 41 $\frac{3}{4}$ ° E., 219 lks. dist., marked $\frac{1}{4}$ S15 BT.
	A juniper, 5 ins. diam., bears N. 62° W., 85 lks. dist., marked $\frac{1}{4}$ S10 BT.
	Asc. 72 ft. over SE. slope.
51.60	Ridge, bears N. 60° E. and S. 60° W.; desc. 100 ft. over NW. slope.
66.40	Head of draw, course N.; asc. 15 ft. over NE. slope.
75.00	Thence over N. slope, descending 6 ft. to
79.98	The cor. of secs. 9, 10, 15 and 16.
	Land, rolling. Soil, gravelly and rocky clay, 3rd and 4th rates. Timber, juniper. Undergrowth, oakbrush.



Survey: Subdivision lines: Frac. T. 17 N., R. 9 W.

62

Chains	N. 0° 01' W., bet. secs. 9 and 10.  Over gently rolling land, thru very scattering timber and scattering undergrowth.  Desc. 40 ft. over gradual N. slope.
29.04	Draw, course W.; asc. 50 ft. over S. slope.
37.60	Long, low spur, slopes W. Desc. 8 ft. over N. slope to
40.00	Set an iron post, 3 ft. long, 1 in. in diam., 12 ins. in the ground to bedrock, with a stone marked with a cross (X) deposited at base, and in a mound of stone to top, for $\frac{1}{4}$ sec. cor., with brass cap marked  $\frac{1}{4}$ S 9   S10 1938  No bearing trees available.  Desc. 44 ft. over gradual N. slope.
46.45	Draw, 10 lks. wide, course S. 60° W.; asc. 27 ft. over S. slope.
51.94	Spur, slopes W. from NE.; desc. 16 ft. over NW. slope.
57.00	Draw, course NW. from NE.; near head; asc. 49 ft. over SW. slope.
68.00	Spur, slopes NW. from E.; desc. 20 ft. over NW. slope.
76.00	Head of draw, course NW.; asc. gradually over W. slope to
80.00	Set an iron post, 3 ft. long, 2 ins. in diam., 18 ins. in the ground to bedrock, with a stone marked with a cross (X) deposited at base, and in a mound of stone to top, for cor. of secs. 3, 4, 9 and 10, with brass cap marked  T17N R9W S4   S3 S9   S10 1938  No bearing trees available.  Land, gently rolling. Soil, gravelly and rocky clay, 3rd and 4th rates. Timber, juniper. Undergrowth, oakbrush.
	N. 89° 59' E., on random line, bet. secs. 3 and 10.
40.00	Set temp. $\frac{1}{4}$ sec. oor.
79.98	Intersect N. and S. line 7 lks. S. of the cor. of secs. 2, 3, 10 and 11.  Thence  S. 89° 56' W., on true line, bet. secs. 3 and 10.  Over gently rolling grassy land, on mesa, thru scattering undergrowth and very scattering timber.

Survey: Subdivision lines: Frac. T. 17 N., R. 9 W.

4203

63

Chains	Desc. 163 ft. over gradual NW. and N. slopes.
32.00	Asc. 23 ft. over N. slope to
39.99	Set an iron post, 3 ft. long, 1 in. in diam., 27 ins. in the ground, for $\frac{1}{4}$ sec. cor., with brass cap marked
	$\begin{array}{r} \frac{1}{4} \text{ S } 3 \\ \text{S } 10 \end{array}$
	1938
	No bearing trees available.
	Raise a mound of stone, 3 ft. base, 2 ft. high, N. of cor.
	Continue over gently rolling grassy land on mesa.
	Asc. 20 ft. over N. slope.
47.00	Desc. 25 ft. over N. slope.
54.00	Asc. 40 ft. over NE. slope.
65.00	Desc. 31 ft. over NW. slope.
74.75	Leave mesa, bears NW. and SE.; desc. 29 ft. over W. slope to
79.98	The cor. to secs. 3, 4, 9 and 10.
	Land, gently rolling. Soil, gravelly and rocky clay, 3rd and 4th rates. Timber, juniper and oak. Undergrowth, oakbrush.
	N. $0^{\circ} 01'$ W., bet. secs. 3 and 4.
	Over gently rolling land, thru scattering undergrowth and very scattering timber.
	Asc. 24 ft. over W. slope to
10.00	Enter nearly level grassy land, on mesa, bears NW. and SE. Desc. gradually.
34.00	Leave mesa, bears NW. and SE. Enter gently rolling land. Desc. 12 ft. over N. slope to
40.00	Set an iron post, 3 ft. long, 1 in. in diam., 14 ins. in the ground to bedrock, with a stone marked with a cross (X) deposited at base and in a mound of stone to top, for $\frac{1}{4}$ sec. cor., with brass cap marked
	$\begin{array}{r} \frac{1}{4} \\ \text{S } 4 \mid \text{S } 3 \end{array}$
	1938
	from which
	A white oak, 9 ins. diam., bears N. $40\frac{1}{2}^{\circ}$ E., 151 lks. dist., marked $\frac{1}{4}$ S3 BT.
	No other bearing trees available.
	Continue over gently rolling land. Desc. 70 ft. over N. and NW. slopes.

Survey: Subdivision lines: Frac. T. 17 N., R. 9 W.

64

Chains

54.20 Draw, course NE.; asc. 23 ft. over SE. slope.

60.00 Desc. 82 ft. over E. and NE. slopes to

78.02 Intersect the N. bdy. of the Tp.  
Set an iron post, 3 ft. long, 2 ins. in diam., 16 ins. in the ground to bedrock, with a stone marked with a cross (X) deposited at base, and in a mound of stone to top, for closing cor. of secs. 3 and 4, with brass cap marked

T18N R9W

S34

S4 S3

T17N R9W

CC

1938

from which

A juniper, 14 ins. diam., bears S.  $56\frac{1}{2}^{\circ}$  E., 268 lks. dist., marked T17N R9W S3 CC BF.

No other bearing tree available.

From point of intersection the cor. of secs. 33 and 34, Frac. T. 18 N., R. 9 W., bears S.  $89^{\circ} 41'$  W., 28.14 chs. dist., and from same point the S.  $\frac{1}{4}$  sec. cor. of sec. 34 bears N.  $89^{\circ} 41'$  E., 11.87 chs. dist. Both cors. hereinbefore described.

Land, gently rolling and nearly level.  
Soil, gravelly and rocky clay, 3rd and 4th rates.  
Timber, juniper and oak.  
Undergrowth, oakbrush.

The std. cor. of secs. 32 and 33, on S. bdy. of the Tp. (4th Std. Par. N.) is an iron post, 2 ins. in diam., projecting 24 ins. above ground, firmly set in ground and mound of stone, and marked on brass cap as described in the official record. No accessories.

Thence

N.  $0^{\circ} 02'$  W., bet. secs. 32 and 33.

Over rolling land, thru very scattering undergrowth.

Desc. 89 ft. over W. and NW. slopes to

12.63 E. rim of canyon, bears N.  $15^{\circ}$  E. and S.  $15^{\circ}$  W. Enter mountainous land. Desc. 112 ft. over steep NW. slope.

15.25 Spencer Creek (dry) 30 lks. wide, course S.  $15^{\circ}$  W. in bottom of canyon. Asc. 194 ft. over steep, rocky SE. slope.

24.00 Point of spur, slopes SE.; desc. 137 ft. over NE. slope.

32.80 Spencer Creek (dry) 25 lks. wide, course S.  $10^{\circ}$  E., from N.  $50^{\circ}$  W. in bottom of same canyon, near head of said creek. Asc. 225 ft. over steep, rocky SW. slope.

39.85 E. rim of canyon, bears NW. and SE. Leave canyon. Continue over mountainous land.

Asc. slightly over SW. slope to

40.00 Set an iron post, 3 ft. long, 1 in. in diam., 6 ins. in

Survey: Subdivision lines: Frac. T. 17 N., R. 9 W.

Chains	the ground to bedrock, with a stone marked with a cross (X) deposited at base, and in a mound of stone to top, for $\frac{1}{4}$ sec. cor., with brass cap marked
	$\frac{1}{4}$ S32   S33 1938
	Asc. 49 ft. over SW. slope.
46.45	Thence over W. slope, ascending gradually to
60.85	Desc. 58 ft. over NW. slope.
68.58	Asc. 55 ft. over SW. slope.
77.00	Desc. 16 ft. over W. slope to
80.00	Set an iron post, 3 ft. long, 2 ins. in diam., 16 ins. in the ground, to bedrock, with a stone marked with a cross (X) deposited at base, and in a mound of stone to top, for cor. of secs. 28, 29, 32 and 33, with brass cap marked
	T17N R9W S29   S28 S32   S33 1938
	Land, rolling and mountainous. Soil, rocky clay, 4th rate. Timber, none. Undergrowth, oakbrush.
	East, on random line, bet. secs. 28 and 33.
40.00	Set temp. $\frac{1}{4}$ sec. cor.
80.06	Intersect N. and S. line, 10 lks. N. of the cor. of secs. 27, 28, 33 and 34.
	Thence, N. 89° 56' W., on true line, bet. secs. 28 and 33. Over rolling land, thru scattering undergrowth. Desc. 35 ft. over W. slope.
1.14	Bottom of rocky draw, course S. from N. 10° E., asc. 61 ft. over SE. slope.
12.33	Thence over S. slope.
17.30	Desc. 55 ft. over SW. slope.
28.75	Wash, 10 lks. wide, course S. 10° E. An earthen stock tank, about 3 chs. square, surrounded by a barbed wire fence, bears N. about 4 chs. dist. Asc. 20 ft. over SE. slope.
36.76	Desc. 8 ft. over S. slope to
40.03	Set an iron post, 3 ft. long, 1 in. in diam., 8 ins. in the ground to bedrock, with a stone marked with a cross (X) deposited at base, and in a mound of stone to top, for $\frac{1}{4}$ sec. cor., with brass cap marked

Survey: Subdivision lines: Frac. T. 17 N., R. 9 W.

66

Chains	
	$\frac{1}{4} \frac{S \ 28}{S \ 33}$
	1938
	Desc. 20 ft. over SW. slope.
47.60	Swale, course S.; asc. 20 ft. over SE. slope.
54.58	Thence over nearly level land.
74.55	Rim, bears N. and S. Leave nearly level and enter mountainous land. Desc. 97 ft. over W. slope to
80.06	The cor. of secs. 28, 29, 32 and 33.
	Land, gently rolling, nearly level and mountainous. Soil, gravelly and rocky clay, 3rd and 4th rates. Timber, none. Undergrowth, oakbrush.
	N. 0° 02' W., bet. secs. 28 and 29.
	Over mountainous land, thru scattering undergrowth.
	Asc. 42 ft. over W. slope.
6.06	Desc. 97 ft. over NW. slope.
13.40	Bottom of ravine, course S. 20° W.; asc. 127 ft. over SE. slope.
21.16	Thence over E. slope. Asc. 18 ft.
28.75	Desc. 22 ft.
33.65	Asc. 29 ft.
38.60	Desc. 8 ft. to
40.00	Set an iron post, 3 ft. long, 1 in. in diam., on exposed bedrock, with a stone marked with a cross (X) deposited at base, and in a mound of stone to top, for $\frac{1}{4}$ sec. cor. with brass cap marked
	$\frac{1}{4}$
	S29   S28
	1938
	Desc. slightly along E. slope.
41.89	Desc. 54 ft. over NE. slope.
47.63	Bottom of same ravine, course S. 20° E.; asc. 69 ft. over SW. slope.
50.86	Desc. 38 ft. over NW. slope.
56.65	Bottom of same ravine, course SW.; asc. 160 ft. over SE. slope.
70.38	Point of spur, slopes E.; desc. 76 ft. over NE. slope.
75.65	Draw, 10 lks. wide, course S. 70° E.; asc. 94 ft. over SW. slope to
80.00	Set an iron post, 3 ft. long, 2 ins. in diam., on exposed

Survey: Subdivision lines: Frac. T. 17 N1, R. 9 W.

67

Chains	
	bedrock, with a stone marked with a cross (X) deposited at base, and in a mound of stone to top, for cor. of secs. 20, 21, 28 and 29, with brass cap marked
	<div style="text-align: center;">           T17N R9W            S20   S21            ———            S29   S28         </div>
	1938
	Land, mountainous and heavily rolling. Soil, rocky, 4th rate. Timber, none. Undergrowth, oakbrush.
	S. 89° 56' E., on random line, bet. secs. 21 and 28.
40.00	Set temp. $\frac{1}{4}$ sec. cor.
80.06	Intersect N. and S. line 2 lks. N. of the cor. of secs. 21, 22, 27 and 28.
	Thence
	N. 89° 55' W., on true line, bet. secs. 21 and 28.
	Over rolling land, thru scattering undergrowth.
	Asc. 35 ft. over E. slope.
7.18	Low spur, slopes S.; desc. 70 ft. over W. slope.
33.60	Bottom of rocky draw, 20 lks. wide, course S. 30° E., general course S. Thence over gently rolling land. Asc. 14 ft. over SE. slope to
40.03	Set an iron post, 3 ft. long, 1 in. in diam., 27 ins. in the ground, with a stone marked with a cross (X) deposited at base, for $\frac{1}{4}$ sec. cor., with brass cap marked
	<div style="text-align: center;"> <math>\frac{1}{4}</math> <math>\frac{S\ 21}{S\ 28}</math> </div>
	1938
	raise a mound of stone, 3 ft. base, 2 ft. high, N. of cor.
	Asc. 31 ft. over gradual SE. slope.
47.88	Spur, slopes S., thence across nearly level top of spur.
50.75	Leave top of spur. Enter mountainous land. Desc. 116 ft. over W. slope.
59.00	Bottom of ravine, 20 lks. wide, course S.; asc. 122 ft. over E. slope.
64.50	Spur, slopes S.; thence across top of spur.
66.50	Leave top of spur. Desc. 49 ft. over W. slope.
71.45	Draw, 20 lks. wide, course S.; asc. 81 ft. over E. slope.
79.10	Short spur, slopes S.; desc. 16 ft. over SW. slope to
80.06	The cor. of secs. 20, 21, 28 and 29.

Survey: Subdivision lines: Frac. T. 17 N., R. 9 W.

68

Chains

Land, rolling and mountainous.  
Soil, gravelly and rocky clay, 3rd and 4th rates.  
Timber, none.  
Undergrowth, oakbrush.

N. 0° 01' W., bet. secs. 20 and 21.

Over mountainous land, thru scattering undergrowth and very scattering timber.

Asc. 544 ft. over S. slope.

34.70 Rocky spur, slopes E.; desc. 184 ft. over steep broken N. slope to

40.00 Set an iron post, 3 ft. long, 1 in. in diam., 6 ins. in the ground to bedrock, with a stone marked with a cross (X) deposited at base, and in a mound of stone to top, for  $\frac{1}{4}$  sec. cor., with brass cap marked

$\frac{1}{4}$

S20 | S21

1938

No bearing trees available.

Desc. 147 ft. over steep broken N. slope.

45.70 Bottom of gulch, 10 lks. wide, course S. 70° E. from S. 70° W.; asc. 125 ft. over S. slope.

51.43 Spur, slopes S. 70° E., near point of same. Desc. 84 ft. over NE. slope.

57.90 Bottom of ravine, 10 lks. wide, course S. 50° E.; asc. 601 ft. over steep S. slope thru dense undergrowth.

80.00 Set an iron post, 3 ft. long, 2 ins. in diam., 10 ins. in the ground to bedrock, with a stone marked with a cross (X) deposited at base, and in a mound of stone to top, for cor. of secs. 16, 17, 20 and 21, with brass cap marked

T17N R9W  
S17 | S16  
S20 | S21

1938

from which

A juniper, 16 ins. diam., bears N. 44 $\frac{1}{4}$ ° E., 143 lks. dist., marked T17N R9W S16 BT.

No other bearing tree available.

Land, mountainous.  
Soil, rocky, 4th rate.  
Timber, juniper.  
Undergrowth, oakbrush.

S. 89° 55' E., on random line, bet. secs. 16 and 21.

40.00 Set temp.  $\frac{1}{4}$  sec. cor.

80.06 Intersect the cor. of secs. 15, 16, 21 and 22.

Thence

Survey: Subdivision lines: Frac. T. 17 N., R. 9 W.

69

Chains	N. 89° 55' W., on true line, bet. secs. 16 and 21. Over rolling land, thru scattering undergrowth. Asc. 22 ft. over SE. slope.
9.10	Thence over S. slope. Desc. 12 ft.
14.00	Asc. 17 ft.
19.08	Desc. 10 ft. over SW. slope.
27.40	Bottom of draw, 10 lks. wide, course S.; asc. 114 ft. over E. slope to
40.03	Set an iron post, 3 ft. long, 1 in. in diam., 8 ins. in the ground to bedrock, with a stone marked with a cross (X) deposited at base, and in a mound of stone to top, for $\frac{1}{4}$ sec. cor., with brass cap marked
	$\frac{1}{4} \begin{array}{r} S 16 \\ S 21 \end{array}$ 1938
	Asc. 63 ft. over E. slope.
55.00	Spur, slopes S. 10° E. Enter mountainous land. Desc. 143 ft. over SW. slope.
63.53	Bottom of ravine, 10 lks. wide, course S. 30° E. Enter dense undergrowth. Asc. 321 ft. over E. slope.
76.00	Asc. 31 ft. over SE. and S. slopes to
80.06	The cor. of secs. 16, 17, 20 and 21. Land, rolling and mountainous. Soil, rocky, 4th rate. Timber, none. Undergrowth, oakbrush.
	N. 0° 01' W., bet. secs. 16 and 17. Over mountainous land, thru scattering timber and undergrowth. Asc. 52 ft. over S. slope.
2.55	Point of spur, slopes S.; asc. 48 ft. along top of spur.
8.93	Leave top of spur, sloping S. from N. 40° W.; desc. 155 ft. over NE. slope.
28.08	Head of ravine, course SE.; asc. 241 ft. over S. slope.
35.80	Ridge bears W. and NE., forming divide bet. Burro Creek to the SE., and Adobe Creek to the NW. Enter rolling land. Desc. 30 ft. over NW. slope to
40.00	Set an iron post, 3 ft. long, 1 in. in diam., 6 ins. in the ground to bedrock, and in a mound of stone to top, for $\frac{1}{4}$ sec. cor., with brass cap marked
	$\frac{1}{4}$ S17   S16 1938 from which



Survey: Subdivision lines: Frac. T. 17 N., R. 9 W.

70

Chains	<p>A juniper, 6 ins. diam., bears S. <math>17\frac{1}{4}^{\circ}</math> E., 181 lks. dist., marked <math>\frac{1}{4}</math> S16 BT.</p> <p>A juniper, 8 ins. diam., bears N. <math>11^{\circ}</math> W., 72 lks. dist., marked <math>\frac{1}{4}</math> S17 BT..</p> <p>Continue over rolling land, thru very scattering timber and scattering undergrowth. Desc. 175 ft. over NW. slope to</p>
80.00	<p>Set an iron post, 3 ft. long, 2 ins. in diam., 12 ins. in the ground to bedrock, with a stone marked with a cross (X) deposited at base, and in a mound of stone to top, for cor. of secs. 8, 9, 16 and 17, with brass cap marked</p> <div><div>T17N. R9W</div><div>S8   S9</div><div>S17   S16</div></div> <p>1938</p> <p>No bearing trees available.</p> <p>Land, mountainous and rolling. Soil, rocky, 4th rate. Timber, juniper. Undergrowth, oakbrush.</p>
	<hr/>
	<p>S. <math>89^{\circ} 55'</math> E., on random line, bet. secs. 9 and 16.</p>
40.00	<p>Set temp. <math>\frac{1}{4}</math> sec. cor..</p>
80.08	<p>Intersect N. and S. line 7 lks. S. of the cor. of secs. 9, 10, 15 and 16.</p> <p>Thence</p> <p>N. <math>89^{\circ} 58'</math> W., on true line, bet. secs. 9 and 16.</p> <p>Over gently rolling grassy land, thru very scattering timber and scattering undergrowth. Desc. 14 ft. over NW. slope.</p>
6.50	<p>Draw, course NW., near head. Thence over gently rolling N. slope. Asc. 45 ft. to</p>
40.04	<p>Set an iron post, 3 ft. long, 1 in. in diam., 20 ins. in the ground to bedrock, and in a mound of stone to top, for <math>\frac{1}{4}</math> sec. cor., with brass cap marked</p> <div><div><math>\frac{1}{4}</math> S 9</div><div><math>\frac{1}{4}</math> S 16</div></div> <p>1938</p> <p>from which</p> <p>A juniper, 16 ins. diam., bears N. <math>63^{\circ}</math> E., 64 lks. dist., marked <math>\frac{1}{4}</math> S9 BT.</p> <p>A juniper, 4 ins. diam., bears S. <math>29\frac{1}{2}^{\circ}</math> E., 92 lks. dist., marked <math>\frac{1}{4}</math> S16 BT.</p> <p>Continue over gently rolling, grassy land, thru very scattering timber and scattering undergrowth. Along N. slope.</p> <p>Asc. 10 ft.</p>
47.70	<p>Desc. 55 ft. over N. and NW. slopes to</p>

Survey: Subdivision lines: Frac. T. 17 N., R. 9 W.

4208

71

Chains	
80.08	The cor. of secs. 8, 9, 16 and 17. Land, gently rolling. Soil, gravelly and rocky clay, 3rd and 4th rates. Timber, juniper. Undergrowth, oakbrush.
	N. 0° 01' W., bet. secs. 8 and 9. Over gently rolling, grassy land, thru very scattering timber and scattering undergrowth. Desc. 129 ft. over NW. slope.
21.19	Bottom of draw, 10 lks. wide, course W.; asc. 50 ft. over S. slope.
34.90	Long, low spur, slopes W.; desc. 29 ft. over N. slope to
40.00	Set an iron post, 3 ft. long, 1 in. in diam., 27 ins. in the ground, with a stone marked with a cross (X) deposited at base, for $\frac{1}{4}$ sec. cor., with brass cap marked $\frac{1}{4}$ S8   S9 1938 No bearing trees available, raise a mound of stone, 3 ft. base, 2 ft. high, W. of cor. Desc. 15 ft. over N. slope.
48.50	Draw, course S. 70° W. Enter dense undergrowth, and steeper slopes. Asc. 122 ft. over S. slope.
64.78	Long spur, slopes W. Desc. 18 ft. over gradual N. slope.
74.80	Head of wash, course NW.; desc. gradually over NW. slope to
80.00	Set an iron post, 3 ft. long, 2 ins. in diam., 6 ins. in the ground to bedrock, with a stone marked with a cross (X) deposited at base, and in a mound of stone to top, for cor. of secs. 4, 5, 8 and 9, with brass cap marked T17N. R9W S5   S4 S8   S9 1938 from which A juniper, 10 ins. diam., bears N. 33½° E., 41 lks. dist., marked T17N R9W S4 BT. No other bearing trees available. Land, gently rolling. Soil, gravelly and rocky clay, 3rd and 4th rates. Timber, juniper. Undergrowth, oakbrush.

Survey: Subdivision lines: Frac. T. 17 N., R. 9 W.

72

Chains	S. 89° 58' E., on random line, bet. secs. 4 and 9.
40.00	Set temp. $\frac{1}{4}$ sec. cor.
80.07	Intersect N. and S. line 2 lks. N. of the cor. of secs. 3, 4, 9 and 10.
	Thence
	N. 89° 57' W., on true line, bet. secs. 4 and 9.
	Over gently rolling land, thru very scattering timber and scattering undergrowth. Desc. 6 ft. over W. slope.
3.10	Bottom of shallow draw, course NW.; asc. 18 ft. over NE. slope.
10.70	Long, low spur, slopes NW.; desc. 120 ft. over SW. slope.
24.27	Bottom of draw, 10 lks. wide, course NW. Enter dense undergrowth. Asc. 65 ft. over NE. slope to
40.03	Set an iron post, 3 ft. long, 1 in. in diam., 3 ins. in the ground to bedrock, and in a mound of stone to top, for $\frac{1}{4}$ sec. cor., with brass cap marked
	$\frac{1}{4} \frac{S \ 4}{S \ 9}$
	1938
	from which
	A juniper, 6 ins. diam., bears S. 84 $\frac{1}{2}$ ° E., 198 lks. dist., marked $\frac{1}{4}$ S9 BT.
	A juniper, 6 ins. diam., bears N. 88 $\frac{1}{4}$ ° W., 26 lks. dist., marked $\frac{1}{4}$ S4 BT.
	Continue over gently rolling land, thru dense undergrowth and very scattering timber. Asc. 12 ft. over NE. slope.
43.15	Thence over N, slope. Desc. 60 ft.
52.70	Asc. 39 ft.
59.67	Desc. 49 ft.
68.73	Asc. 16 ft.
71.10	Desc. 30 ft. over NW. slope to
80.07	The cor. of secs. 4, 5, 8 and 9.
	Land, gently rolling. Soil, gravelly and rocky clay, 3rd and 4th rates. Timber, juniper and white oak. Undergrowth, oakbrush.
	N. 0° 01' W., bet. secs. 4 and 5.
	Over rolling land, thru very scattering timber, and dense undergrowth. Desc. 124 ft. over NW. slope.
14.00	Bottom of draw, course N. 70° W.; asc. 96 ft. over SW. slope.
22.75	Spur, slopes W., near point of same. Desc. 69 ft. over N. slope.

Survey; Subdivision lines: Frac. T: 17 N., R. 9 W.

188

73

Chains	
34.30	Bottom of draw, course W.; asc. 47 ft. over S. slope to
40.00	Set an iron post, 3 ft. long, 1 in. in diam., 6 ins. in the ground to bedrock, with a stone marked with a cross (X) deposited at base, and in a mound of stone to top, for $\frac{1}{4}$ sec. cor., with brass cap marked
	$\frac{1}{4}$
	S5   S4
	1938
	No bearing trees available.
	Ascend 81 ft. over S. slope to.
54.30	Thence across nearly level top of long spur sloping W.
60.43	Leave top of spur. Enter heavily rolling land. Desc. 161 ft. over N. slope.
71.56	Bear Creek, (dry), 20 lks. wide, course S. 80° W.; asc. 67 ft. over S. slope to
77.47	Intersect the N. bdy. of the Tp. Set an iron post, 3 ft. long, 2 ins. in diam., on exposed bedrock, over a cross (X) chiseled thereon, and in a mound of stone to top, for closing cor. of secs. 4 and 5, with brass cap marked
	T18N R9W. S33 S5   S4 T17N R9W CC
	1938
	No bearing trees available.
	From point of intersection the cor. of secs. 32 and 33, Frac. T. 18 N., R. 9 W., bears S. 89° 54' W., 27.61 chs. dist., and from same point the S. $\frac{1}{4}$ sec. cor. of sec. 33 bears N. 89° 54' E., 12.17 chs. dist. Both cors. hereinbefore described.
	Land, rolling. Soil, rocky, 4th rate. Timber, juniper. Undergrowth, oakbrush.
	The std. cor. of secs. 31 and 32 on S. bdy. of the Tp. (4th Std. Par. N.) is on iron post, 2 ins. in diam., projecting 24 ins. above ground, firmly set in ground and mound of stone, marked on brass cap and witnessed as described in the official record.
	Thence
	N. 0° 03' W., bet. secs. 31 and 32.
	Over mountainous and heavily rolling land, thru scattering undergrowth.
	Asc. 140 ft. over W. and SW. slopes.
22.00	Rim of mesa, bears NW. and SE. Thence across nearly

Survey: Subdivision lines: Frac. T. 17 N., R. 9 W.

74

Chains

level land on mesa.

38.60 Rim of mesa, bears NW. and SE. Leave mesa. Desc. 29 ft. over NE. slope to

40.00 Set an iron post, 3 ft. long, 1 in. in diam., on exposed bedrock, over a cross (X) chiseled thereon, and in a mound of stone to top, for  $\frac{1}{4}$  sec. cor., with brass cap marked

$\frac{1}{4}$

S31 | S32

1938

Desc. 166 ft. over steep NE. slope.

53.44 Thence over broken E. slope. Asc. gradually.

65.53 Desc. 55 ft.

75.40 Wash, 20 lks. wide, course S. 30° E., in bottom of canyon, containing shallow pools of water. Asc. 102 ft. over steep SW. slope broken by a series of cliffs bearing NW. and SE.

79.95 Narrow ledge, at base of nearly vertical cliff, 20 ft. high, bearing NW. and SE. facing SW.  
Set an iron post, 3 ft. long, 2 ins. in diam., 4 ins. in the ground to bedrock, with a stone marked with a cross (X) deposited at base, and in a mound of stone to top, for witness cor. to cor. of secs. 29, 30, 31 and 32, with brass cap marked

	WC	
T17N		R9W
S30		S29
S31		S32

1938

Asc. over face of cliff.

80.00 True point for cor. of secs. 29, 30, 31 and 32, on edge of cliff where it is impracticable to monument the cor., therefore establish witness cor. at 5 lks. S. 0° 03' E., as described above.

Land, mountainous, heavily rolling and broken.  
Soil, rocky, 4th rate.  
Timber, none.  
Undergrowth, catclaw, oakbrush and cacti.

From true point for cor. of secs. 29, 30, 31 and 32, East, on random line, bet. secs. 29 and 32.

40.00 Set temp.  $\frac{1}{4}$  sec. cor.

80.05 Intersect the cor. of secs. 28, 29, 32 and 33.

Thence

West, on true line, bet. secs. 29 and 32.

Over mountainous land, thru scattering undergrowth.

Desc. 73 ft. over steep W. slope.

## Survey: Subdivision lines: Frac. T. 17 N., R. 9 W.

75

Chains	
3.00	Bottom of ravine, 10 lks. wide, course S.; asc. 85 ft. over E. slope.
6.71	Asc. 17 ft. over SE. and S. slopes to
10.90	Draw, course SE.; asc. 100 ft. over E. slope.
18.05	Asc. 82 ft. over SE. and S. slopes to
29.90	Head of draw, course SE.; asc. 186 ft. over E. slope to
40.02	Spur ridge, bearing N. and S. sloping S. Top of rocky butte in this ridge bears N. 20 lks. dist. Set an iron post, 3 ft. long, 1 in. in diam., on exposed bedrock, with a stone marked with a cross (X) deposited at base, and in a mound of stone to top, for $\frac{1}{4}$ sec. cor. with brass cap marked
	$\frac{1}{4} \frac{S \ 29}{S \ 32}$
	1938
	Desc. 377 ft. over steep broken W. slope.
56.90	Bottom of rocky ravine, course S. 30° W.; asc. 117 ft. over SE. slope.
67.50	Spur, slopes SW.; desc. 214 ft. over W. slope to
80.05	The true point for cor. of secs. 29, 30, 31 and 32. (W.C. 0.05 chs. S. 0° 03' E.).
	Land, mountainous. Soil, rocky, 4th rate. Timber, none. Undergrowth, oakbrush.
	From true point for cor. of secs. 29, 30, 31 and 32. West, on random line, bet. secs. 30 and 31.
40.00	Set temp. $\frac{1}{4}$ sec. cor.
80.06	Intersect W. bdy. of the Tp. 2 lks. N. of the cor. of secs. 25, 30, 31 and 36, established under this group as hereinbefore described.
	Thence
	N. 89° 59' E., on true line, bet. secs. 30 and 31.
	Over mountainous land, thru very scattering timber and scattering undergrowth.
	Asc. 159 ft. over SW. slope.
9.00	Spur, slopes SW.; desc. 55 ft. over SE. slope.
12.10	Draw, course SW.; asc. 166 ft. over SW. slope to
20.40	Rim of mesa, bears NW. and SE. Leave mountainous and enter nearly level land on mesa.
40.06	Set an iron post, 3 ft. long, 1 in. in diam., 12 ins. in the ground to bedrock, with a stone marked with a cross (X) deposited at base, and in a mound of stone to top, for $\frac{1}{4}$ sec. cor., with brass cap marked

4208

Survey: Subdivision lines: Frac. T. 17 N., R. 9 W.

76

Chains	
	$\frac{1}{4}$ S 30 S 31
	1938
	No bearing trees available.
	Continue over nearly level land on mesa.
42.50	Rim of mesa, bears N. and S. Leave mesa and enter rolling land.
	Desc. 156 ft. over E. slope to
68.40	W. rim of canyon, bears NW. and S. Enter mountainous land. Desc. 192 ft. over steep broken E. slope.
77.50	Wash, 20 lks. wide, course S. 30° E., in bottom of canyon, containing shallow pools of water. Asc. 80 ft. over precipitous SW. slope to
80.06	The true point for cor. of secs. 29, 30, 31 and 32 (W.C. 0.05 chs. S. 0° 03' E.)
	Land, mountainous, nearly level, rolling and broken. Soil, rocky, 4th rate. Timber, catclaw and mesquite. Undergrowth, oakbrush and cacti:
	From true point for cor. of secs. 29, 30, 31 and 32.
	N. 0° 03' W., bet. secs. 29 and 30.
	Over mountainous land, thru scattering undergrowth.
	Asc. 32 ft. over steep broken SW. slope.
1.50	W. side of top of small rocky butte; desc. 20 ft. over NW. slope.
6.00	Asc. 166 ft. over steep broken SW. and W. slopes.
31.60	Draw, course SW.; asc. 157 ft. over SW. slope to
40.00	Set an iron post, 3 ft. long, 1 in. in diam., on exposed bedrock, with a stone marked with a cross (X) deposited at base, and in a mound of stone to top, for $\frac{1}{4}$ sec; cor. with brass cap marked
	$\frac{1}{4}$
	S30   S29
	1938
	Asc. 11 ft. over SW. slope.
41.90	Point of spur, slopes S. 70° W.; desc. 116 ft. over NW. slope.
48.10	Bottom of ravine, 10 lks. wide, course S. 70° W.; asc. 199 ft. over SW. slope.
57.16	Point of spur, slopes W.; desc. 101 ft. over NW. slope.
65:60	Bottom of ravine, course S. 50° W.; asc. 266 ft. over S. slope.
75.55	Spur, slopes W., near point of same. Desc. 93 ft. over NW. slope to

Survey: Subdivision lines: Frac. T. 17 N., R. 9 W.

4208

77

Chains	
80.00	Set an iron post, 3 ft. long, 2 ins. in diam., on exposed bedrock, with a stone marked with a cross (X) deposited at base, and in a mound of stone to top, for cor. of secs. 19, 20, 29 and 30, with brass cap marked
	$\begin{array}{r} T17N \quad R9W \\ S19 \quad S20 \\ \hline S30 \quad S29 \end{array}$
	1938
	Land, mountainous. Soil, rocky, 4th rate. Timber, none. Undergrowth, oakbrush and laurel.
	East, on random line, bet. secs. 20 and 29.
40.00	Set temp. $\frac{1}{4}$ sec. cor.
80.00	Intersect N. and S. line 5 lks. N. of the cor. of secs. 20, 21, 28 and 29.
	Thence
	N. $89^{\circ} 58'$ W., on true line, bet. secs. 20 and 29.
	Over mountainous land, thru scattering undergrowth.
	Desc. 83 ft. over SW. slope.
5.46	Draw, course S. $30^{\circ}$ E.; asc. 227 ft. over SE. slope..
21.00	Spur, slopes S. $20^{\circ}$ E.; desc. 280 ft. over SW. slope.
36.75	Bottom of ravine, 10 lks. wide, course S. $20^{\circ}$ E.; asc. 66 ft. over E. slope to
40.00	Set an iron post, 3 ft. long, 1 in. in diam., on exposed bedrock, with a stone marked with a cross (X) deposited at base, and in a mound of stone to top, for $\frac{1}{4}$ sec. cor., with brass cap marked
	$\frac{1}{4} \frac{S. 20}{S. 29}$
	1938
	Asc. 536 ft. over E. slope.
66.50	Ridge, bears N. and S.; desc. 397 ft. over W. and NW. slopes to
80.00	The cor. of secs. 19, 20, 29 and 30.
	Land, mountainous. Soil, rocky, 4th rate. Timber, none. Undergrowth, oakbrush and laurel.
	S. $89^{\circ} 59'$ W., on random line, bet. secs. 19 and 30.
40.00	Set temp. $\frac{1}{4}$ sec. cor.
80.06	Intersect the W. bdy. of the Tp., 5 lks. N. of the cor. of secs. 19, 24, 25 and 30, established under this group as hereinbefore described.



Survey: Subdivision lines: Frac. T. 17 N., R. 9 W.

78

Chains	
	Thence
	N. 89° 57' E., on true line, bet. secs. 19 and 30.
	Over mountainous land, thru very scattering timber and scattering undergrowth.
	Asc. 185 ft. over NW. slope.
5.16	Old road, bears NW. and SE.
9.60	Spur slopes SW. Leave mountainous and enter rolling land. Desc. 35 ft. over SE. slope.
11.70	Same road, bears NE. and SW.
14.92	Drain, course S., near head; asc. 80 ft. over SW. slope.
24.04	Rim of mesa, bears N. 10° W. and S. 10° E. Thence over nearly level and gently rolling land on mesa.
37.02	Rim of mesa, bears N. and S. Leave mesa and enter mountainous land. Desc. 46 ft. over E. slope to
40.06	Set an iron post, 3 ft. long, 1 in. in diam., 6 ins. in the ground to bedrock, with a stone marked with a cross (X) deposited at base, and in a mound of stone to top, for $\frac{1}{4}$ sec. cor., with brass cap marked
	$\frac{1}{4} \frac{S \ 19}{S \ 30}$
	1938
	No bearing trees available.
	Desc. 10 ft. over E. slope.
43.05	Drain, course S.; asc. 70 ft. over W. slope.
46.10	Spur, slopes S.; desc. 222 ft. over steep E. slope.
58.16	Wash, 20 lks. wide, in bottom of ravine, course S.; asc. 122 ft. over W. slope.
68.12	Spur, slopes S.; desc. 145 ft. over broken E. slope.
74.10	Wash, 30 lks. wide, course SW. in bottom of ravine. Asc. 126 ft. over NW. slope to
80.06	The cor. of secs. 19, 20, 29 and 30.
	Land, mountainous, gently rolling and nearly level. Soil, gravelly and rocky, 3rd and 4th rates. Timber, juniper and oak. Undergrowth, oakbrush.
	N. 0° 02' W., bet. secs. 19 and 20.
	Over mountainous land, thru very scattering timber and scattering undergrowth.
	Desc. 50 ft. over NW. slope.
2.40	Wash, 30 lks. wide, course SW., in bottom of ravine. Asc. 608 ft. over S. and SW. slopes.
25.54	Ridge, bears NW. and SE.; desc. 63 ft. over cliffs on broken NE. slope.

Survey: Subdivision lines: Frac. T. 17 N., R. 9 W.

Chains	
29.70	Draw, course E., near head; asc..161 ft. over SE. slope.
38.82.	Spur, slopes E. Enter dense undergrowth. Desc. 22.ft. over NE. slope to
40.00	Set an iron post, 3 ft. long, 1 in. in diam., 18 ins. in the ground to bedrock, with a stone marked with a cross (X) deposited at base, and in a mound of stone to top, for $\frac{1}{4}$ sec. cor., with brass cap marked
	$\frac{1}{4}$ S19   S20 1938
	No bearing trees available.
	Asc. gradually over E. slope thru dense undergrowth.
50.40	Asc. 116 ft. over SE..slope..
62.06	Ridge, bears N. 5° E. and S. 5° W. Old road bears NE. and SW. Asc. 23 ft. over W. slope.
67.05	Asc. 313 ft. over SW. slope.
77.78	Same ridge bears N. 25° W. and S. 25° E.; desc. slightly over E. slope to
80.00	Set an iron post, 3 ft. long, 2 ins. in diam., 28 ins. in the ground, for cor. of secs. 17, 18, 19 and 20, with brass cap marked
	T17N R9W S18   S17 S19.   S20. 1938
	No bearing trees available,
	raise a mound of stone, 3 ft. base, 2 ft. high, W. of cor.
	Land, mountainous. Soil, rocky, 4th rate. Timber, juniper and oak. Undergrowth, oakbrush and cacti.
	S. 89° 58' E., on random line, bet. secs. 17 and 20.
40.00	Set temp. $\frac{1}{4}$ sec. cor.
80.08	Intersect N. and S. line 7 lks. N. of the cor. of secs. 16, 17, 20 and 21.
	Thence
	N. 89° 55' W., on true line, bet. secs. 17 and 20.
	Over mountainous land, thru dense undergrowth and very scattering timber.
	Desc. 317 ft. over SW. slope.
17.36	Bottom of ravine, 10 lks. wide, course S. 30° E.; asc. 181 ft. over E. slope.

Survey: Subdivision lines: Frac. T. 17 N., R. 9 W.

80

Chains

28.24. Spur, slopes S. 30° E.; desc. 217 ft. over SW. slope.

37.41 Wash, 10 lks. wide, in bottom of ravine, course S. 60° E. from N. 80° W. Asc. 40 ft. over NE. slope to

40.04 Set an iron post, 3 ft. long, 1 in. in diam., 27 ins. in the ground, for  $\frac{1}{4}$  sec. cor., with brass cap marked

$$\frac{1}{4} \frac{S 17}{S 20}$$

1938

No bearing trees available,

raise a mound of stone, 3 ft. base, 2 ft. high, N. of cor.

Asc. 50 ft. over NE. slope.

45.70 Asc. 60 ft. over N. slope.

61.58 Draw, course NE.; asc. 387 ft. over E. slope to sec. cor.

70.39 Old road, bears N. and S.

80.08 The cor. of secs. 17, 18, 19 and 20.

Land, mountainous.

Soil, rocky, 4th rate.

Timber, juniper.

Undergrowth, oakbrush.

S. 89° 57' W., on random line, bet. secs. 18 and 19.

40.00 Set temp.  $\frac{1}{4}$  sec. cor.

80.02 Intersect W. bdy. of the Tp. 7 lks. S. of the cor. of secs. 13, 18, 19 and 24, established under this group as hereinbefore described.

Thence

East, on true line, bet. secs. 18 and 19.

Over rolling land, thru very scattering timber and dense undergrowth.

Asc. gradually over S. slope.

15.00 Shallow draw, course SW. Leave rolling and enter mountainous land. Asc. 384 ft. over NW. slope to

40.02 Set an iron post, 3 ft. long, 1 in. in diam., 5 ins. in the ground to bedrock, with a stone marked with a cross (X) deposited at base, and in a mound of stone to top, for  $\frac{1}{4}$  sec. cor., with brass cap marked

$$\frac{1}{4} \frac{S 18}{S 19}$$

1938

No bearing trees available.

Asc. 40 ft. over NW. slope.

43.44 Undergrowth becomes scattering. Asc. 119 ft. over N. slope.

Survey: Subdivision lines: Frac. T. 17 N., R. 9 W.

81

Chains	
64.00	Bottom of ravine, course NW.; near head; asc.. 180 ft. over steep broken NW. slope to
70.50	Foot of jagged cliffs, bearing N. and S., facing W.; asc. 300 ft. over cliffs.
76.88	Top of cliffs, bearing N. and S. Enter dense undergrowth. Asc. 35 ft. over SW. slope.
79.00	Ridge, bears NW. and SE.; desc. slightly over NE. slope to
80.02	The cor. of secs. 17, 18, 19 and 20.  Land, rolling, broken and mountainous. Soil, gravelly and rocky, 3rd and 4th rates. Timber, oak and juniper. Undergrowth, oakbrush and cacti..
	N. 0° 02' W., bet. secs. 17 and 18.  Over mountainous land, thru very scattering timber and dense undergrowth.  Desc. 364 ft. over NE. slope to
40.00	Set an iron post, 3 ft. long, 1 in. in diam., 28 ins. in the ground, for $\frac{1}{4}$ sec. cor., with brass cap marked  $\frac{1}{4}$  S18   S17  1938  No bearing trees available,  raise a mound of stone, 3 ft. base, 2 ft. high, W. of cor.  Desc. 68 ft. over NE. slope.
47.00	Draw, course NW.; Leave mountainous and enter rolling land. Asc. 78 ft. over SW. and S. slopes.
63.17	Spur, slopes SW.; desc. 75 ft. over NW. slope to
80.00	Set an iron post, 3 ft. long, 2 ins. in diam., 28 ins. in the ground, for cor. of secs. 7, 8, 17 and 18, with brass cap marked  T17N R9W S7   S8 S18   S17  1938  No bearing trees available,  raise a mound of stone, 3 ft. base, 2 ft. high, W. of cor.  Land, mountainous and rolling. Soil, rocky, 4th rate. Timber, juniper and pinyon. Undergrowth, oakbrush.



Survey: Subdivision lines: Frac. T. 17 N., R. 9 W.

83

Chains	
	<p>It is impracticable to chain a longer base.</p> <p>From "C" the flag "B" bears N. 82° 14' W.</p> <p>Included angles of the triangle "A-B-C" are, 47° 57', 7° 46' and 124° 17', the sum of which is 180° 00'.</p> <p>Chained dist. on random line to "A" = 34.39 chs. West.          Triangulated dist. "A" to "B" = <u>36.18</u> chs. West.          Total dist. sec. cor. to "B" = 70.57 chs. West.</p>
70.57	Triangulation point "B". Resume chaining and continue line and measurement.
79.92	Intersect the W. bdy. of the Tp. 10 lks. N. of the cor. of secs. 7, 12, 13 and 18, established under this group as hereinbefore described.
	Thence
	N. 89° 56' E., on true line, bet. secs. 7 and 18.
	Over mountainous land, thru very scattering timber and scattering undergrowth. Desc. 52 ft. over NE. slope.
5.00	Bottom of ravine, course NW.; asc. 97 ft. over W. slope.
9.35	Rocky spur, slopes NW. Discontinue chaining. Measurement to $\frac{1}{4}$ sec. cor. by triangulation hereinbefore described. Desc. about 350 ft. over precipitous broken NE. slope and cliffs.
30.00	(Approx.) Wash, 30 lks. wide, course NW., in bottom of canyon. Asc. about 300 ft. over precipitous, broken W. slope to
39.92	Set an iron post, 3 ft. long, 1 in. in diam., 18 ins. in the ground to bedrock, with a stone marked with a cross (X) deposited at base, and in a mound of stone to top, for $\frac{1}{4}$ sec. cor., with brass cap marked
	$\frac{1}{4} \frac{S \ 7}{S \ 18}$ <p>1938</p> <p>No bearing trees available.</p> <p>Resume chaining.</p> <p>Asc. 146 ft. over W. slope.</p>
48.40	Spur, slopes N. Enter rolling land. Desc. 90 ft. over E. and NE. slopes.
70.60	Draw, course NW.; asc. 76 ft. over NW. slope to
79.92	The cor. of secs. 7, 8, 17 and 18.
	<p>Land, mountainous, broken and rolling.</p> <p>Soil, rocky, 4th rate.</p> <p>Timber, juniper.</p> <p>Undergrowth, oakbrush.</p>
	N. 0° 02' W., bet. secs. 7 and 8.
	Over gently rolling land, thru very scattering timber and scattering undergrowth.
	Desc. 105 ft. over NW. slope.

Survey: Subdivision lines: Frac. T. 17 N., R. 9 W.

84

Chains

18.12 Drain, course NW. Thence over nearly level land on mesa sloping slightly NW.

40.00 Set an iron post, 3 ft. long, 1 in. in diam., 20 ins. in the ground to bedrock, with a stone marked with a cross (X) deposited at base, and in a mound of stone to top, for  $\frac{1}{4}$  sec. cor., with brass cap marked

$\frac{1}{4}$

S 7 | S 8

1938

Continue over nearly level land on mesa, sloping slightly to the NW.

60.00 Enter gently rolling land. Desc. 15 ft. over N. slope.

64.00 Center of wash, 20 lks. wide, course N. 70° W.; asc. 15 ft. over SW. slope.

66.00 Thence over gradual W. slope, continuing over mesa.

80.00 Set an iron post, 3 ft. long, 2 ins. in diam., 28 ins. in the ground, for cor. of secs. 5, 6, 7 and 8, with brass cap marked

T17N · R9W

S6 | S5  
— S7 | S8

1938

No bearing trees available,

raise a mound of stone, 2 ft. base, 1½ ft. high, W. of cor.

Land, gently rolling and nearly level.  
Soil, gravelly and rocky clay, 3rd and 4th rates.  
Timber, juniper and pinyon.  
Undergrowth, oakbrush.

S. 89° 52' E., on random line, bet. secs. 5 and 8.

40.00 Set temp.  $\frac{1}{4}$  sec. cor.

80.26 Intersect N. and S. line, 12 lks. N. of the cor. of secs. 4, 5, 8 and 9.

Thence

N. 89° 47' W., on true line, bet. secs. 5 and 8.

Over rolling land, thru very scattering timber and dense undergrowth.

Desc. 65 ft. over NW. slope.

9.95 Wash, course S. 80° W., joined at this point by another wash from SE. Thence over gently rolling grassy land. Undergrowth becomes scattering. Desc. 60 ft. over SW. slope to

35.40 Same wash, course N. 60° W. Desc. gradually over NW. slope to

Survey: Subdivision lines: Frac. T. 17 N., R. 9 W.

85

Chains	
40.13	Set an iron post, 3 ft. long, 1 in. in diam., on exposed bedrock, with a stone marked with a cross (X) deposited at base, and in a mound of stone to top, for $\frac{1}{4}$ sec. cor., with brass cap marked  $\frac{1}{4} \frac{S \ 5}{S \ 8}$ 1938  No bearing trees available.  Thence over nearly level and gently rolling grassy land on mesa, thru very scattering timber and scattering undergrowth.  Desc. 60 ft. over gradual NW. and W. slopes to sec. cor.
49.60	Earthen water tank, 4 chs. wide, N. and S., and 6 chs. long E. and W., bears N. 7 chs. dist. A barbed wire fence is constructed around this tank.
56.60	Barbed wire fence ( 4 wire) bears N. 15° W. and S. 15° E.
80.26	The cor. of secs. 5, 6, 7 and 8.  Land, gently rolling and nearly level. Soil, gravelly and rocky clay, 3rd and 4th rates. Timber, juniper. Undergrowth, oakbrush.
	S. 89° 56' W., on random line, bet. secs. 6 and 7.
40.00	Set temp. $\frac{1}{4}$ sec. cor.
79.90	Intersect W. bdy. of the Tp. 2 lks. N. of the cor. of secs. 1, 6, 7 and 12, established under this group as hereinbefore described.  Thence  N. 89° 55' E., on true line, bet. secs. 6 and 7.  Over mountainous land, thru very scattering timber and dense undergrowth.  Desc. 276 ft. over steep NE. slope.
13.40	Bear Creek, 25 lks. wide, in bottom of canyon, containing a stream of water 15 lks. wide, 6 ins. deep, course N. 60° W.  Thence across nearly level bottom of canyon, ascending gradually.
24.00	Bear Creek, 25 lks. wide, with stream of water 15 lks. wide, 6 ins. deep, course SW. Continue over nearly level bottom of canyon.
39.70	Wash, 20 lks. wide, course N. 20° W.
39.90	Set an iron post, 3 ft. long, 1 in. in diam., 6 ins. in the ground to bedrock, with a stone marked with a cross (X) deposited at base, and in a mound of stone to top, for $\frac{1}{4}$ sec. cor., with brass cap marked  $\frac{1}{4} \frac{S \ 6}{S \ 7}$ 1938



Survey: Subdivision lines: Frac. T. 17 N., R. 9 W.

Chains	No bearing trees available. Continue over nearly level bottom of canyon, thru dense undergrowth.
46.00	Foot of cliffs, bearing N. and S. Leave bottom of canyon. Enter mountainous land. Asc. 150 ft. over cliffs facing W.
55.70	Top of cliffs and rim of mesa, bears N. and S. Thence over nearly level land on mesa, thru scattering undergrowth and very scattering timber. Asc. slightly over W. slope to
79.90	The cor. of secs. 5, 6, 7 and 8. Land, mountainous, broken and nearly level. Soil, gravelly and rocky, 3rd and 4th rates. Timber, juniper. Undergrowth, oakbrush..
	N. 0° 02' W., bet. secs. 5 and 6. Over nearly level grassy land, on mesa, thru very scattering timber and scattering undergrowth.. Desc. slightly over NW. slope.
15.00	Bear Creek, 20 lks. wide, course SW., containing a stream of water 10 lks. wide, 8 ins. deep. The creek enters head of canyon at this point. Continue over nearly level and gently rolling grassy land on mesa. Ascend gradually over SE. slope.
24.00	House, at Bear Creek Ranch, bears E. about 8 chs. dist.
28.40	Barn, at same ranch, bears E. about 5½ chs. dist.
40.00	Set an iron post, 3 ft. long, 1 in. in diam., 18 ins. in the ground to bedrock, with a stone marked with a cross (X) deposited at base, and in a mound of stone to top, for ¼ sec. cor., with brass cap marked <div>¼ S 6   S 5 1938</div>
	No bearing trees available. Continue over nearly level and gently rolling grassy land, on mesa, thru very scattering timber and scattering undergrowth. Asc. gradually over SE. and E. slopes to
77.59	Intersect N. bdy. of the Tp. Set an iron post, 3 ft. long, 2 ins. in diam., 4 ins. in the ground to bedrock, with a stone marked with a cross (X) deposited at base, and in a mound of stone to top, for closing cor. of secs. 5 and 6, with brass cap marked <div>T18N R9W S32 S6   S5 T17N R9W CC 1938</div>

Survey: Subdivision lines: Frac. T. 17 N., R. 9 W.

87

## Chains

No bearing trees available.

From point of intersection the cor. of secs. 31 and 32, Frac. T. 18 N., R. 9 W., bears N.  $89^{\circ} 51'$  W., 25.85 chs. dist., and the S.  $\frac{1}{4}$  sec. cor. of sec. 32 bears S.  $89^{\circ} 51'$  E., 13.06 chs. dist. Both cors. hereinbefore described.

Land, nearly level and gently rolling.  
Soil, gravelly and rocky clay, 3rd and 4th rates.  
Timber, juniper and pinyon.  
Undergrowth, oakbrush.

## GENERAL DESCRIPTION.

This township, rendered fractional by invasion of its eastern part by the Luis Maria Baca Float No. 5, a private land grant, contains nearly every class of surface, namely; nearly level, gently rolling, rolling, heavily rolling, broken and mountainous. Mountainous, broken and heavily rolling land predominate, and such classes of surface are not confined to any particular part of the township.

The elevation of this township varies from about 5800 to 6500 feet above sea level.

The entire township is directly or indirectly drained by Burro Creek, and its tributaries. From Pilot Knob, a prominent butte in the SW $\frac{1}{4}$  of sec. 18, a ridge extends northeasterly thru the township and forms the main drainage divide. To the north of this divide the surface drains into Bear Creek, which heads in sec. 3 and flows with a general westerly course thru the north tier of secs. and is a tributary of Adobe Creek, which watercourse it enters in sec. 1 of Frac. T. 17 N., R. 9 $\frac{1}{2}$  W. Adobe Creek heads about 3 miles northerly from the NW. cor. of this township, crosses sec. 6 with a southwesterly course, and enters Francis Creek in sec. 20 of T. 17 N., R. 10 W. Francis Creek heads in sec. 17 of T. 17 N., R. 10 W. and flows in a general southeasterly direction, entering Burro Creek in sec. 7 of T. 16 N., R. 9 W. Spencer Creek heads in sec. 32 of this township and flows with a general southwesterly course, entering Francis Creek in sec. 1 of T. 16 N., R. 10 W. To the south of the divide the land in this township drains directly into Burro Creek, or into Spencer Creek and its tributary watercourses. Burro Creek heads near the south line of the boundary of the Luis Maria Baca Float No. 5, about 8 miles east from this township, flows westerly nearly to the E. bdy. of the Tp., where the course becomes southwesterly, and said creek crosses the Tp. bdy. on N. $\frac{1}{2}$  of E. bdy. of sec. 25, thence flows southerly near the Tp. bdy. to a point on N. $\frac{1}{2}$  of E. bdy. of sec. 36, where it turns to southwest, crosses secs. 36 and 35, and leaves the township on the E. $\frac{1}{2}$  of S. bdy. of sec. 35. The principal direct tributaries of Burro Creek in this township are: Happy Hollow Canyon, heading in the N. $\frac{1}{2}$  of sec. 23, course southerly thru secs. 23, 26 and 35, and entering Burro Creek in SE $\frac{1}{4}$  of sec. 35, and Hellzapopin Canyon, heading in the Luis Maria Baca Float No. 5 about 1 $\frac{1}{2}$  miles N. from the S. line of its boundary, course southerly thru frac. sec. 24 and entering Burro Creek on N. $\frac{1}{2}$  of E. bdy. of sec. 25.

Between Burro Creek and the divide there is a large area known as Southeast Mesa which however should be designated as a bench. There are several other mesas and benches in various parts of the township. The surface on all of the mesas and benches varies between nearly level and gently rolling.

The soil in this township is mainly gravelly and rocky clay, 3rd and 4th rates, shallow, and in many parts there is no soil, the bedrock being exposed.

The timber is principally juniper, pinyon and oak, with sycamore and willow along Burro Creek and its tributaries in the southeastern part of the township. The timber is scattering in the eastern part, very scattering in the western tier of secs. and north half of the township, and the greater part of the south half of the township is devoid of timber. None of the timber is of commercial value except for fuel and fence posts.

The undergrowth consists of oakbrush, buckbrush, catclaw, laurel and cacti, which in general is scattering, though there are several large areas where the undergrowth is dense, mainly in the northwest quarter of the township.

At the time of this survey there were running streams of water in Burro Creek, Adobe Creek, Hellzapopin Canyon, Bear Creek in secs. 5 and 6, and pools of water in several other watercourses. The only spring observed was what is locally known as Big Spring, located in Happy Hollow Canyon in NE $\frac{1}{4}$  of sec. 26.

The only settlers in the township at the present time are the Bear Creek Ranch in SW $\frac{1}{4}$  of sec. 5, and W. D. Webb in the SE $\frac{1}{4}$  of sec. 26.

The improvements consist of: house, barn, outbuildings, fences and earthen water tank at the Bear Creek Ranch in sec. 5, W. D. Webb's cabin in SE $\frac{1}{4}$  of sec. 26, in Happy Hollow Canyon, pole corral, well, pump and 2 steel water troughs in SW $\frac{1}{4}$  of sec. 25, belonging to W. D. Webb, earthen stock tank surrounded by woven wire fence on line bet. secs. 10 and 15, earthen stock tank enclosed by barbed wire fence in SE $\frac{1}{4}$  of sec. 28 near S. bdy. of the sec., short line of barbed wire fence on W. bdy. of sec. 6, same on line bet. secs. 24 and 25, and lines of fence between natural barriers along the boundary of the Luis Maria Baca Float No. 5.

There are no approved mineral surveys in the township, and no indications of valuable mineral deposits.

There are no improved roads within the township. A road extends northeasterly from the Bear Creek Ranch in sec. 5 to Seligman, Arizona. An old road, little more than a trail, extends from sec. 17 southwesterly thru secs. 20 and 19. There are several trails in the southeastern part.

The land in this township is chiefly valuable for grazing purposes as a large part is covered with a good growth of grass, and this is the only activity being carried on at this time.

#### FINAL FIELD TESTS OF INSTRUMENTS.

Young and Son's transit No. 8544  
Armand F. Allard, Public Land Surveyor.

February 17, 1938, at camp near the std. cor. of secs. 32 and 33, T. 17 N., R. 10 W., G. & S.R. Meridian, Arizona, latitude 34°48'12"N., longitude 113°21'24"W., examine the adjustments of Young and Son's transit No. 8544 and find no errors, then to test the solar apparatus by com-

paring its indications with a true meridian established by direct altitude observations on the sun, proceed as follows:  
make a series of two altitude observations of the sun for azimuth, two in each series with the telescope in direct and reversed positions, observing opposite limbs of the sun, and reading the horizontal angles from a flag set about 15 chs. N.

Observation	Telescope	Sun	Watch time	Vertical Angle	Horizontal Angle
1st (a)	Direct	+	9h.50m.45s.	26°55'	130°24'
" (b)	"	+	9h.51m.30s.	27°01'	130°34'
" (c)	Reversed	-	9h.53m.30s.	28°05'	130°20'
" (d)	"	-	9h.54m.15s.	28°12'	130°30'
Mean of (a) and (d)			9h.52m.30s.	27°33'30"	130°27'
Mean of (b) and (c)			9h.52m.30s.	27°33'	130°27'
Mean of 1st observation			9h.52m.30s.	27°33'15"	130°27'00"
2nd (a)	Direct	+	10h.04m.	28°56'	133°16'
2nd (b)	"	+	10h.05m.	29°05'	133°27'
" (c)	Reversed	-	10h.06m.30s.	30°05'	133°10'
" (d)	"	-	10h.07m.30s.	30°14'	133°23'
Mean of (a) and (d)			10h.05m.45s.	29°35'	133°19'30"
Mean of (b) and (c)			10h.05m.45s.	29°35'	133°18'30"
Mean of 2nd observation			10h.05m.45s.	29°35'00"	133°19'00"

By 1st observation flag bears N. 0°01'22" W.  
By 2nd observation flag bears N. 0°00'40" W.  
Mean true bearing of flag N. 0°01'01" W.

February 18, 1938, at same station, at 9h.00m., a.m., app.t., set off 34°48'N. on the latitude arc; 11°40'S. on the declination arc; and determine a meridian with the solar, which agrees with the true meridian.

at app. noon, with the latitude arc unchanged; observe the sun on the meridian, and obtain a reading of 11°37½'S. on the declination arc, which agrees with the computed declination of the sun.

at 3h. 00m., p.m., app.t., with the latitude arc unchanged; set off 11°34½'S. on the declination arc; and determine a meridian with the solar, which agrees with the true meridian.

As all of the solar observations made during the usual hours of solar work come within 1'30" of the true meridian, conclude that this instrument is in satisfactory adjustment on this date, and that it has remained in such condition throughout the surveys executed with same which are described in the foregoing field notes.

BUFF AND BUFF transit No. 10125  
Norville E. Shearer, Public Land Surveyor.

February 18, 1938, at same station, examine the adjustments of Buff and Buff transit No. 10125 and find no errors, then to test the solar apparatus of same by comparing its indications with the true meridian established by direct altitude observations on the sun as hereinbefore described, proceed as follows:

at 8h. 00m., a.m., app.t., set off  $34^{\circ}48'N.$  on the latitude arc;  $11^{\circ}40'S.$  on the declination arc; and determine a meridian with the solar, which agrees with the true meridian.

at app. noon, with the latitude arc unchanged; observe the sun on the meridian, and obtain a reading of  $11^{\circ}37\frac{1}{2}'S.$  on the declination arc, which agrees with the computed declination of the sun.

at 4h. 00m., p.m., app.t., with the latitude arc unchanged; set off  $11^{\circ}33'S.$  on the declination arc; and determine a meridian with the solar, which agrees with the true meridian.

As all of the solar observations made during the usual hours of solar work come within  $1'30''$  of the true meridian, conclude that this instrument is in satisfactory adjustment on this date, and that it has remained in such condition throughout the surveys executed with same which are described in the foregoing field notes.

---

BUFF and BUFF transit No. 18002  
Ty White, Public Land Surveyor.

---

February 18, 1938, at same station, examine the adjustments of Buff and Buff transit No. 18002 and find no errors, then, to test the solar apparatus of same by comparing its indications with the true meridian established by direct altitude observations on the sun as hereinbefore described, proceed as follows:

at 8h. 30m. a.m., app.t., set off  $34^{\circ}48'N.$  on the latitude arc;  $11^{\circ}40'S.$  on the declination arc; and determine a meridian with the solar, which agrees with the true meridian.

at app. noon, with the latitude arc unchanged; observe the sun on the meridian, and obtain a reading of  $11^{\circ}37\frac{1}{2}'S.$  on the declination arc, which agrees with the computed declination of the sun.

at 3h. 00m., p.m., app.t., with the latitude arc unchanged; set off  $11^{\circ}34'S.$  on the declination arc; and determine a meridian with the solar, which agrees with the true meridian.

As all of the solar observations made during the usual hours of solar work come within  $1'30''$  of the true meridian, conclude that this instrument is in satisfactory adjustment on this date, and that it has remained in such condition throughout the surveys executed with same which are described in the foregoing field notes.

---

to

Public Land Surveyor

6-8412

92

# CERTIFICATE OF UNITED STATES SURVEYOR

I, Norville E. Shearer, Public Land Surveyor, HEREBY CERTIFY upon honor that, in  
supplemental  
pursuance of special instructions bearing date of the 28th day of October, 1937,  
received from the district cadastral engineer for Arizona, with assignment  
instructions dated November 8, 1937, I have resurveyed part of the South bdy. of  
Frac. T. 18 N., R. 9 W., and part of the North bdy. of Frac. T. 17 N.,  
R. 9 W., and surveyed part of the Subdivision lines of  
Frac. Township 17 North, Range 9 West  
of the Gila & Salt River Meridian, in the State of Arizona, which are  
represented in the foregoing field notes as having been executed by me and under my direction; and that said  
resurvey and  
survey has been made in strict conformity with said instructions, the Manual of Instructions for the Survey  
of the Public Lands of the United States, and in the specific manner described in the foregoing field notes.  
Phoenix, Arizona  
January 24, 1939

*Norville E. Shearer*

Public Land Surveyor

## CERTIFICATE OF APPROVAL

Office of U.S. Supervisor of Surveys,

\_\_\_\_\_, 19\_\_\_\_

The foregoing field notes of the survey of \_\_\_\_\_

executed by \_\_\_\_\_,

under special instructions dated \_\_\_\_\_, and assignment

instructions dated \_\_\_\_\_, having been critically examined, and

the necessary corrections made prior to their certification by the engineer, the said field notes, and the survey

therein described, are hereby approved.

\_\_\_\_\_  
U.S. Supervisor of Surveys.

## CERTIFICATE OF TRANSCRIPT

I CERTIFY that the foregoing transcript of the field notes of the above-described surveys in \_\_\_\_\_

\_\_\_\_\_, is a true copy of the original field notes on file in the public survey office.

\_\_\_\_\_  
U.S. Supervisor of Surveys.

The diagram illustrates a two-dimensional lattice structure. It consists of a grid of points. Arrows indicate interactions between nearest and next-nearest neighbors. The lattice is labeled with 'a' for the nearest neighbor distance and 'b' for the next-nearest neighbor distance.

Public Land Surveyor

6-8412



# CERTIFICATE OF SURVEYOR

I, Armand F. Allard, Public Land Surveyor, HEREBY CERTIFY upon honor that, in pursuance of <sup>supplemental</sup> special instructions bearing date of the 28th day of October, 1937, received from the district cadastral engineer for Arizona, with assignment instructions dated November 8, 1937, I have ~~retraced~~ part of the South bdy. of Frac. T. 18 N., R. 9 W. ~~resurveyed~~ part of the South bdy. of Frac. T. 18 N., R. 9 W., all of the West boundary and part of the North bdy. of Frac. T. 17 N., R. 9 W. and surveyed the East bdy. of Frac. T. 17 N., R. 9½ W., and part of the Subdivision lines of Frac. Township 17 North, Range 9 West of the Gila & Salt River Meridian, in the State of Arizona, which are represented in the foregoing field notes as having been executed by me and under my direction; and that said ~~retracement, resurvey, and~~ survey has been made in strict conformity with said instructions, the Manual of Instructions for the Survey of the Public Lands of the United States, and in the specific manner described in the foregoing field notes.

*Leopoldo W. Wyo.*  
*April 1, 1940*

*Armand F. Allard*  
Public Land Surveyor

## CERTIFICATE OF APPROVAL

OFFICE OF SUPERVISOR OF SURVEYS,

\_\_\_\_\_, 19\_\_\_\_

The foregoing field notes of the survey of \_\_\_\_\_

executed by \_\_\_\_\_, under special instructions dated \_\_\_\_\_, and assignment instructions dated \_\_\_\_\_, having been critically examined, and the necessary corrections made prior to their certification by the engineer, the said field notes, and the survey therein described, are hereby approved.

\_\_\_\_\_  
Supervisor of Surveys.

## CERTIFICATE OF TRANSCRIPT

I certify that the foregoing transcript of the field notes of the above-described surveys in \_\_\_\_\_

\_\_\_\_\_, is a true copy of the original field notes on file in the public survey office.

\_\_\_\_\_  
Supervisor of Surveys.

to

Public Land Surveyor

6-8412

# CERTIFICATE OF SURVEYOR

I, Ty White, Public Land Surveyor, HEREBY CERTIFY upon honor that, in pursuance of <sup>supplemental</sup> special instructions bearing date of the 28th day of October, 1937, received from the district cadastral engineer for Arizona, with assignment instructions dated November 8, 1937, I have retraced and resurveyed part of the bdy. of Luis Maria Baca Float No. 5 and surveyed the East boundary and part of the Subdivision lines of Frac. Township 17 North, Range 9 West of the Gila & Salt River Meridian, in the State of Arizona, which are represented in the foregoing field notes as having been executed by me and under my direction; and that said retracement, resurvey, and survey has been made in strict conformity with said instructions, the Manual of Instructions for the Survey of the Public Lands of the United States, and in the specific manner described in the foregoing field notes.

Phoenix, Arizona

June 12, 1939

*Ty White*

Public Land Surveyor

## CERTIFICATE OF APPROVAL

OFFICE OF SUPERVISOR OF SURVEYS,

Denver, Colo. APR 20 1940, 1940

The foregoing field notes of the retracement of Part of bdy. of Luis Maria Baca Float No. 5; part of South bdy. of Frac. T. 18 N., R. 9 W. and RESURVEY of Part of bdy. of Luis Maria Baca Float No. 5; part of South bdy. of Frac. T. 18 N., R. 9 W.; West bdy. and North bdy. of Frac. T. 17 N., R. 9 W. and of SURVEY of East bdy. and Subdivision lines of Frac. T. 17 N., R. 9 W. and East bdy. of Frac. T. 17 N., R. 9 W. of the Gila and Salt River Meridian, in the State of Arizona,

executed by Ty White, Norville E. Shearer and Armand F. Allard, Public Land Surveyors under <sup>supplemental</sup> special instructions dated October 28, 1937 for Group 220, Ariz. and assignment instructions dated November 8, 1937, having been critically examined, and

the necessary corrections made prior to their certification by the engineer, the said field notes, and the ~~survey~~ retracements, resurveys and surveys therein described, are hereby approved.

*Armand F. Allard*

Supervisor of Surveys.

## CERTIFICATE OF TRANSCRIPT

I ~~CERTIFY~~ that the foregoing transcript of the field notes of the above described surveys in

is a true copy of the original field notes on file in the public survey office.

Supervisor of Surveys.