

UNITED STATES
DEPARTMENT OF THE INTERIOR
GENERAL LAND OFFICE

ECOK 4230

FIELD NOTES

OF SURVEY OF

WEST BOUNDARY

NORTH BOUNDARY

and

SUBDIVISION LINES OF

TOWNSHIP 9 SOUTH, RANGE 1 WEST

Of the GILA AND SALT RIVER Meridian,

In the State of ARIZONA

EXECUTED BY

Horace M. Muscott, Ty White,

Armand F. Allard and Norville E. Shearer,

Public Land Surveyors

Under special instructions dated December 1, 1937, which provided
for the surveys included under Group No. 197 Arizona bearing the approval of the
Commissioner of the General Land Office under date of January 14, 1938
and assignment instructions dated February 3 and 18, 1938.

Survey commenced February 19, 1938

Survey completed March 18, 1938.

INDEX DIAGRAM.

Township _____, Range _____

6	5	4	3	2	1
7	8	9	10	11	12
18	17	16	15	14	13
19	20	21	22	23	24
30	29	28	27	26	25
31	32	33	34	35	36

~INDEX-DIAGRAM~

BOOK 4230

36		31	32	33	34	35	36	31
		10	11	12	13	14	14 15	
1	9	6 66	5 50	4 41	3 32	2 23	1	6
	8	65 66	63 51	50 49	40 33	32 31 24	23	
12	8							
	7	7 62	8 49	9 39	10 31	11 22	12	7
	6	61	60 59 48	48 47	39 38 30	30	22 21	
13	6							
	5	18 59	17 47	16 38	15 29	14 21	13	18
		57 58 58	57 46	T. 9 S. 37 R. 1 W. 46	37	28 20	20	
24	5							
		19 56	20 45	21 36	22 28	23 19	24	19
		55 55	55 54	44	36 35 27	27	19 18	
25	4							
		30 54	29 44	28 35	27 26	26 18	25	30
		52 53 53	52 43	43 34	34	26 25 17	17	
36	3							
		31 51	32 42	33 33	34 25	35 16	36	31
					24			

2nd Standard Parallel South

— Lines of accepted surveys or resurveys.

— Lines surveyed under this group.



Areas surveyed as per accepted plats on file.

The surveys herein described were executed by Horace M. Muscott, Ty White, Norville E. Shearer and Armand F. Allard, Public Land Surveyors, using respectively, Buff and Buff transits Nos. 16723, 18002 and 10125, and Young and Sons' transit No. 8544. Each of these instruments is equipped with an improved Smith solar attachment and otherwise conforms to the standard specifications of the General Land Office. The instruments were examined and tested by the District Cadastral Engineer for Arizona and California prior to the beginning of the surveys of this group, and were approved conditional upon satisfactory results of field tests of same.

The azimuths of all of the lines of survey herein described were determined with the solar attachments.

All measurements were made with Lufkin and Dietzgen steel tapes, 5 chs. in length, graduated every link for the first 100 lks., and the remainder at intervals of 10 lks. The tapes were tested by comparison with a Lufkin standard tape and found to be correct. All of the measurements were made on the slope, the vertical angle of each interval determined with a clinometer in good adjustment and the horizontal equivalents entered in the field notes.

PRELIMINARY FIELD TESTS OF INSTRUMENTS.

Buff and Buff transit No. 16723.
Horace M. Muscott, Public Land Surveyor.

Feb. 15, 1938; at camp in SE $\frac{1}{4}$ of sec. 36, T. 5 S., R. 4 W., G. & S.R. Meridian, Arizona, in latitude $32^{\circ}57'N.$; longitude $112^{\circ}37'W.$; examine the adjustments of Buff and Buff transit No. 16723 and find no errors; then, to test the solar apparatus of same by comparing its indications with a true meridian determined at this station by Polaris observations on Jan. 16, 1938 as described in field notes of survey of 1st Standard Parallel thru Rs. 1 and 2 W., proceed as follows:

At 9h.00m., a.m., app.t., set off $32^{\circ}57'N.$ on the latitude arc; $12^{\circ}42\frac{1}{2}'S.$ on the declination arc; and determine a meridian with the solar, which agrees with the true meridian.

At app. noon, with the latitude arc unchanged, observe the sun on the meridian and obtain a reading of $12^{\circ}40\frac{1}{2}'S.$ on the declination arc, which agrees with the computed declination of the sun.

At 3h.00m., p.m., app.t., with the latitude arc unchanged, set off $12^{\circ}39\frac{1}{2}'S.$ on the declination arc and determine a meridian with the solar, which agrees with the true meridian.

As all of the solar observations made during the usual hours of solar work come within $1'30''$ of the true meridian, conclude that the adjustments of this instrument are satisfactory on this date, prior to beginning the surveys with same which are hereinafter described.

Buff and Buff transit No. 18002.
Ty White, Public Land Surveyor.

Feb. 22, 1938; at same station as above, examine the adjustments of Buff and Buff transit No. 18002 and find no errors; then, to test the solar apparatus of same by comparing its indications with the same true meridian, proceed as follows;

At 9h. 00m., a.m., app.t., set off $32^{\circ}57'N.$ on the latitude arc; $10^{\circ}14'S.$ on the declination arc and determine a meridian with the solar, which agrees with the true meridian.

2.

At app. noon, with the latitude arc unchanged, observe the sun on the meridian and obtain a reading of $10^{\circ}12'S$. on the declination arc, which agrees with the computed declination of the sun.

At 3h.00m., p.m., app.t., with the latitude arc unchanged, set off $10^{\circ}09'S$. on the declination arc and determine a meridian with the solar, which agrees with the true meridian.

As all of the solar observations made during the usual hours of solar work come within $1'30''$ of the true meridian, conclude that the adjustments of this instrument are satisfactory on this date, prior to beginning the surveys with same which are hereinafter described.

Buff and Buff transit No. 10125
Norville E. Shearer, Public Land Surveyor.

Feb. 23, 1938; at same station as above, examine the adjustments of Buff and Buff transit No. 10125 and find no errors; then, to test the solar apparatus of same by comparing its indications with the same true meridian, proceed as follows;

At 9h. 00m., a.m., app.t., set off $32^{\circ}57'N$. on the latitude arc; $9^{\circ}52'S$. on the declination arc; and determine a meridian with the solar, which agrees with the true meridian.

At app. noon, with the latitude arc unchanged, observe the sun on the meridian and obtain a reading of $9^{\circ}50'S$. on the declination arc, which agrees with the computed declination of the sun.

At 3h. 00m., app.t., with the latitude arc unchanged, set off $9^{\circ}47'S$. on the declination arc and determine a meridian with the solar, which agrees with the true meridian.

As all of the solar observations made during the usual hours of solar work come within $1'30''$ of the true meridian, conclude that the adjustments of this instrument are satisfactory on this date, prior to beginning the surveys with same which are hereinafter described.

Young and Sons' transit No. 8544
Armand F. Allard, Public Land Surveyor.

Feb. 23, 1938; at same station as above, examine the adjustments of Young and Sons' transit No. 8544 and find no errors; then, to test the solar apparatus of same by comparing its indications with the same true meridian, proceed as follows;

At 9h. 00m., app.t., set off $32^{\circ}57'N$. on the latitude arc; $9^{\circ}52'S$. on the declination arc; and determine a meridian with the solar, which agrees with the true meridian.

At app. noon, with the latitude arc unchanged, observe the sun on the meridian and obtain a reading of $9^{\circ}50'S$. on the declination arc, which agrees with the computed declination of the sun.

At 3h. 00m., p.m., app.t., with the latitude arc unchanged, set off $9^{\circ}47'S$. on the declination arc and determine a meridian with the solar, which agrees with the true meridian.

As all of the solar observations made during the usual hours of solar work come within $1'30''$ of the true meridian, conclude that the adjustments of this instrument are satisfactory on this date, prior to beginning the surveys with same which are hereinafter described.

Survey: West Boundary of T. 9 S., R. 1 W.

BOOK 480

Chains	<p>The standard cor. of Tp. 9 S., Rgs. 1 and 2 W., on the 2nd. Standard Parallel South, reestablished in 1924, is an iron post, 2 ins. in diam., projecting 26 ins. above ground, firmly set in ground and mound of stone, with brass cap marked as described in the official record.</p> <p>Thence</p> <p>North, bet. secs. 31 and 36.</p> <p>Over mountainous land, thru scattering timber and undergrowth. Descend 30 ft. over W. slope.</p> <p>5.00 Asc. 10 ft. over SW. slope.</p> <p>6.49 Spur, slopes NW.; desc. 147 ft. over NE. slope.</p> <p>20.27 Wash, 5 lks. wide, course NW. in bottom of ravine; asc. 117 ft. over SW. slope.</p> <p>29.63 Spur, slopes NW.; desc. 350 ft. over NE. slope to</p> <p>40.00 Set an iron post, 3 ft. long, 1 in. diam., 10 ins. in the ground to bedrock with a stone marked with a cross (X) deposited at base and in a mound of stone to top, for $\frac{1}{4}$ sec. cor., with brass cap marked</p> <div>$\frac{1}{4}$</div> <div>S36 S31</div> <div>1938</div> <p>No bearing trees available.</p> <p>Desc. 227 ft. over NE. slope.</p> <p>54.70 Wash, 30 lks. wide in bottom of canyon, course NW.; asc. 29 ft. over SW. slope.</p> <p>64.30 Point of spur, slopes W.; desc. 34 ft. over NW. slope.</p> <p>72.22 Wash, 20 lks. wide, course SW.; asc. 149 ft. over SW. slope.</p> <p>79.50 Spur, slopes N. 80° W.; desc. 6 ft. over N. slope to</p> <p>80.00 Set an iron post, 3 ft. long, 2 ins. diam., 8 ins. in the ground to bedrock with a stone marked with a cross (X) deposited at base and in a mound of stone to top, for the cor. of secs. 25, 30, 31 and 36, with brass cap marked</p> <div>T9S</div> <div>R2W R1W</div> <div>S25 S30</div> <div>S36 S31</div> <div>1938</div> <p>No bearing trees available.</p> <p>Land, mountainous.</p> <p>Soil, rocky, 4th rate.</p> <p>Timber, paloverde and ironwood.</p> <p>Undergrowth, cacti, sagebrush and greasewood.</p>
--------	---

Survey: West Boundary of T. 9 S., R. 1 W.

4.

Chains	North, bet. secs. 25 and 30. .
	Over mountainous land; thru very scattering timber and scattering undergrowth. Descend 104 ft. over N. slope.
2.54	Wash, 10 lks. wide in bottom of canyon, course W.; asc. 379 ft. over SE. slope.
15.12	Fork of spurs, sloping NW. and SW. from E.; desc. 317 ft. over NE. slope.
29.25	Thence over broken E. slope. Ascend 50 ft.
35.10	Desc. 160 ft. over NE. slope to
40.00	Set an iron post, 3 ft. long, 1 in. diam., 8 ins. in the ground to bedrock, with a stone marked with a cross (X) deposited at base and in a mound of stone to top, for 4 sec. cor., with brass cap marked
	<div>S25 S30</div> <div>1938</div>
	No bearing trees available. . . .
	Descend 72 ft. over NE. slope to
42.80	Foot of steep descent, bears NW. and SE.; thence over gently rolling valley.
44.80	Wash, 10 lks. wide, course NW.; thence over gently rolling W. slope, ascending gradually.
70.20	Wash, 40 lks. wide, course SW.; asc. gradually over SE. slope to
80.00	Set an iron post, 3 ft. long, 2 ins. diam., 12 ins. in the ground, to bedrock and in a mound of stone to top, for the cor. of secs. 19, 24, 25 and 30, with brass cap marked
	<div>T9S</div> <div>R2W R1W</div> <div>S24 S19</div> <div>S25 S30</div> <div>1938</div> <div>from which</div> <div>An ironwood limb, 4 ins. diam., bears N. 37° E., 98 lks. dist., marked T9S R1W S19 BT.</div> <div>A paloverde, 6 ins. diam., bears S. 23½° E., 200 lks. dist., marked T9S R1W S30 BT.</div> <div>A paloverde, 6 ins. diam., bears S. 2¼° W., 233 lks. dist., marked T9S R2W S25 BT.</div> <div>A paloverde, 6 ins. diam., bears N. 79½° W., 148 lks. dist., marked T9S R2W S24 BT.</div> <div>Land, S.½ mountainous; N.½ gently rolling.</div> <div>Soil, rocky, 4th rate.</div> <div>Timber, paloverde and ironwood.</div> <div>Undergrowth, greasewood, cacti and sagebrush.</div>

Survey: West Boundary of T. 9 S., R. 1 W.

Chains	North, bet. secs. 19 and 24.
	Over gently rolling land, thru scattering timber and undergrowth. Descend 46 ft. over NW. slope.
6.70	Swale, drains W. from NE.; asc. 62 ft. over SW. slope to
22.19	Wash, 15 lks. wide, course SW.; asc. 45 ft. over SW. slope.
35.30	Desc. 34 ft. over NW. slope.
39.20	Wash, 60 lks. wide, course SW.; asc. slightly over S. slope to
40.00	Set an iron post, 3 ft. long, 1 in. diam., 10 ins. in the ground to bedrock, and in a mound of stone to top, for $\frac{1}{4}$ sec. cor., with brass cap marked
	<div>S24 S19</div> <div>1938</div> <div>from which</div> <div>A paloverde, 8 ins. diam., bears S. 80° E., 24 lks. dist., marked $\frac{1}{4}$ S19 BT.</div> <div>A paloverde, 5 ins. diam., bears S. 64$\frac{1}{4}$° W., 74 lks. dist., marked $\frac{1}{4}$ S24 BT.</div> <div>Continue over gently rolling land, thru scattering timber and undergrowth. Asc. 50 ft. over S. slope to</div>
60.90	Enter mountainous land. Asc. 107 ft. over SW. slope.
67.70	Spur, slopes SE. near point of same; desc. 101 ft. over NE. slope.
77.88	Wash, 10 lks. wide, course SE. Enter gently rolling land. Asc. gradually over SE. slope to
80.00	Set an iron post, 3 ft. long, 2 ins. diam., 4 ins. in the ground to bedrock over a cross (X) marked thereon and in a mound of stone to top, for the cor. of secs. 13, 18, 19 and 24, with brass cap marked
	<div>T9S</div> <div><div>R2W</div><div>S13</div><div>S24</div></div> <div><div>R1W</div><div>S18</div><div>S19</div></div> <div>1938</div> <div>No bearing trees available.</div> <div>Land, gently rolling and mountainous.</div> <div>Soil, rocky, 4th rate.</div> <div>Timber, paloverde and ironwood.</div> <div>Undergrowth, greasewood, cacti, sagebrush and elk brush.</div>
	North, bet. secs. 13 and 18.
	Over gently rolling land, thru very scattering timber and scattering undergrowth. Asc. 70 ft. over SE. slope to
30.86	Wash, 10 lks. wide, course SE.; asc. 54 ft. over SW. slope.

Survey: West Boundary of T. 9 S., R. 1 W.

6.

Chains	
38.00	Desc. 16 ft. over NW. slope to
40.00	Set an iron post, 3 ft. long, 1 in. diam., 10 ins. in the ground to bedrock, with a stone marked with a cross (X) deposited at base and in a mound of stone to top, for $\frac{1}{4}$ sec. cor., with brass cap marked
	$\frac{1}{4}$
	S13 S18
	1938
	No bearing trees available.
	Desc. 15 ft. over NW. slope.
43.99	Wash, 20 lks. wide, course SW. Enter mountainous land; asc. 337 ft. over SE. slope.
62.04	Fork of spurs, sloping SE. and SW. from N.; asc. 89 ft. along top of spur.
69.74	Leave top of spur, slopes S. from NE.; asc. 192 ft. over SW. slope.
78.30	Top of high hill and head of spur sloping SE. Set an iron post, 3 ft. long, 2 ins. diam., on exposed bedrock, over a cross (X) marked thereon, and in a mound of stone to top, for witness cor. to cor. of secs. 7, 12, 13 and 18, with brass cap marked
	WC T9S R2W. R1W S12 S7 S13 S18 1938
	No bearing trees available.
	Discontinue chaining at this W.C. as the Tp. bdy. north herefrom crosses a series of cliffs, about 200 ft. high, bearing NW. and SE., facing NE. and NW., and turning to SW. at about 1.00 ch. W. of line.
	Descend over cliffs to
80.00	True point for cor. of secs. 7, 12, 13 and 18 is on NE. face of cliff, where it is inaccessible and cannot be monumented, therefore establish witness cor. at 1.70 chs. South, as described above.
	Land, gently rolling and mountainous. Soil, rocky, 4th rate. Timber, paloverde and ironwood. Undergrowth, cacti, sagebrush and greasewood.
	From true point for cor. of secs. 7, 12, 13 and 18, North, bet. secs. 7 and 12. Over mountainous land, thru scattering timber and undergrowth. Descend over precipitous NE. and N. faces of cliffs. Measurement by triangulation as follows:

Survey: West Boundary of T. 9 S., R. 1 W.

8.

Chains	
78.83	Point on offset line at base of cliffs and about 2.50 chs. W. from peak of pinnacle. Desc. 15 ft. over steep broken W. slope to
80.00	Point on offset line 1.43 chs. W. from true point for cor. of secs. 1, 6, 7 and 12. This sec. cor. point is on NW. face of cliffs which extend NE. about 8.00 chs. dist. thence East. It being impossible to monument the sec. cor. at its true point establish witness cor. at 1.00 ch. North, as hereinafter described.
	Land, mountainous. Soil, rocky, 4th rate. Timber, paloverde and ironwood. Undergrowth, sagebrush, cacti and greasewood.
	From true point for cor. of secs. 1, 6, 7 and 12, North, bet. secs. 1 and 6. Over mountainous land, thru scattering timber and undergrowth. Measurement by offset as follows: From offset point 1.43 chs. W. from sec. cor. point, chain measurement North on offset line parallel to Tp. bdy. At 1.00 ch. station on offset line chain measurement East 1.43 chs. to point on Tp. bdy. at
1.00	Set an iron post, 3 ft. long, 2 ins. diam., on exposed bedrock, over a cross (X) marked thereon, and in a mound of stone to top, for witness cor. to cor. of secs. 1, 6, 7 and 12, with brass cap marked
	<div>T9S R2W R1W S1 S6 S12 S7 W C 1938</div>
	No bearing trees available. Cliffs ahead prevent chaining on Tp. bdy. N. from this W.C., therefore return to the 1.00 ch. station on the offset line 1.43 chs. W. from this point, thence continue measurement North on same offset line, descending 95 ft. over steep broken NW. slope to 13.57 ch. station; thence East, 1.43 chs. returning to Tp. bdy. at
13.57	Offset point. Thence North, bet. secs. 1 and 6, continuing measurement. Desc. 233 ft. over steep NW. slope to
25.55	Enter rolling land. Desc. 83 ft. over NW. slope to
36.66	Foot of slope, bears NE. and SW. Enter nearly level land.
40.00	Set an iron post, 3 ft. long, 1 in. diam., 10 ins. in the ground to bedrock, with a stone marked with a cross (X) deposited at base, and in a mound of stone to top, for 1/4 sec. cor., with brass cap marked
	<div>1/4 S1 S6 1938</div>

Survey: West Boundary of T. 9 S., R. 1 W.

BOOK 4230

9.

Chains

. No bearing trees available. .

Continue over nearly level land, thru scattering timber
and undergrowth. .

49.85 Wash, 100.lks. wide, course W.

53.20 Leave nearly level, and enter rolling land. Asc. 62 ft.
over SW. slope..

67.36 Enter mountainous land. Asc. 59 ft. over SW. and W.
slopes.

76.00 Desc. 36 ft. over W..slope to .

80.00 Set an iron post, 3 ft. long, 3 ins. diam., 8 ins. in the
ground to bedrock, over a cross (X) marked thereon, and
in a mound of stone to top, for cor. of Ts. 8 and 9 S.,
Rs. 1 and 2 W., with brass cap marked

T8S	
R2W	R1W
S36	S31
S1	S6
T9S	

.1938

No bearing trees available.

Land, mountainous, broken, nearly level and rolling.
Soil, rocky, 4th rate.
Timber, paloverde and ironwood.
Undergrowth, greasewood, sagebrush and cacti.

Survey: North Boundary of T. 9 S., R. 1 W.

10

Chains	
	From the cor. of Tps. 8 and 9 S., Rgs. 1 E. and 1 W., West, on random line, setting temp. $\frac{1}{4}$ sec. and sec. cors. alternately at 40.00 ch. intervals. At 459.52 ch. station, to avoid cliffs, offset N. 2.19 chs., thence West, 8.71 chs.; thence S. 2.19 chs., returning to point on random line at 468.23 ch. station. Continue line and measurement and at 479.57 chs. intersect N. and S. line, 3 lks. S. of the cor. of Tps. 8 and 9 S., Rgs. 1 and 2 W., hereinbefore described. Thence, from Tp. cor. East, bet. secs. 6 and 31.. Over mountainous land, thru scattering timber and under- growth. Asc. 393 ft. over steep W. slope to top of spur. 11.34 Offset point. Continue on Tp. bdy. 16.65 Spur, slopes N. Thence across top of spur. 18.50 Top of almost perpendicular cliffs about 200 ft. high, facing NE. Discontinue chaining on Tp. bdy. and obtain measurement by offset line N. 2.19 chs. from 11.34 ch. station; thence E. 8.71 chs.; thence S. 2.19 chs. re- turning to Tp. bdy. at 20.05 Offset point near base of cliffs. Thence on Tp. bdy. continuing measurement from Tp. cor. Desc. 179 ft. over NE. slope to 39.57 Set an iron post, 3 ft. long, 1 in. diam., 24 ins. in the ground to bedrock, and in a mound of stone to top, for $\frac{1}{4}$ sec. cor., with brass cap marked $\frac{1}{4} \frac{S \ 31}{S \ 6}$ 1938 No bearing trees available. Raise a mound of stone, 3 ft. base, 2 ft. high, N. of cor. Descend 56 ft. over broken NE. slope. 53.87 Wash, 5 lks. wide, in bottom of ravine, course N.; asc. 124 ft. over W. slope. 66.07 Low spur, slopes N. 10° W.; desc. 38 ft. over broken NE. slope. 76.00 Wash, 8 lks. wide, in bottom of gulch, course NW.; asc. 70 ft. over W. slope to 79.57 Set an iron post, 3 ft. long, 2 ins. diam., 5 ins. in the ground to bedrock over a cross (X) marked thereon, and in a mound of stone to top, for cor. of secs. 5, 6, 31 and 32, with brass cap marked $\begin{array}{r l} T8S & R1W \\ S31 & S32 \\ \hline S \ 6 & S \ 5 \\ T9S & \end{array}$ 1938

Survey: North Boundary of T. 9 S., R. 1 W.

BOOK 4230

11.

Chains

No bearing trees available.

Land, mountainous.

Soil, rocky, 3rd and 4th. rates.

Timber, paloverde and mesquite.

Undergrowth, greasewood, catclaw, jackthorn and cacti.

East, bet. secs. 5 and 32.

Over mountainous land, thru scattering timber and undergrowth. Asc. 348 ft. over steep W. slope to

7.88. Top of perpendicular cliff, 50 ft. high, bearing N. and S., facing W.; asc. 233 ft. over steep SW. slope to

20.58 Top of perpendicular cliff, 60 ft. high, bearing NW. and SE., facing SW.

20.66 High rocky spur, slopes NW., from bend in ridge, 1.00 ch. dist.. Ridge bears SW. and SE. Desc. 206 ft. over steep, rocky NE. slope to

35.70 Draw, course NW.; asc. 30 ft. over SW. slope to

40.00 Set an iron post, 3 ft. long, 1 in. diam., 10 ins. in the ground to bedrock with a stone marked with a cross (X) deposited at base and in a mound of stone to top, for $\frac{1}{4}$ sec. cor., with brass cap marked
$$\begin{array}{r} S \ 32 \\ 4 \ S \ 5 \end{array}$$

1938

No bearing trees available.

Ascend 15 ft. over SW. slope.

40.78 Spur, slopes NW.; desc. 58 ft. over broken N. slope.

46.68 Saddle in ridge bearing N. 10° W. and S. 10° E.; desc. 112 ft. over NE. slope.52.00 Bottom of rocky ravine, course N. 30° E.; asc. 49 ft. over NW. slope.

54.58 Rocky spur, slopes NE.; desc. 93 ft. over steep, rocky E. slope.

58.00 Bottom of rocky ravine, course NE.; thence along rolling N. slope to sec. cor.

67.50 Point from which old Indian ruins bear N. about 10.00 chs. dist. on top of low spur.

80.00 Set an iron post, 3 ft. long, 2 ins. diam., 8 ins. in the ground to bedrock with a stone marked with a cross (X) deposited at base, and in a mound of stone to top, for cor. of secs. 4, 5, 32 and 33, with brass cap marked

$$\begin{array}{r} T8S \ R1W \\ S32 \ S33 \\ S \ 5 \ S \ 4 \\ T9S \end{array}$$

1938

No bearing trees available.

Survey: North Boundary of T. 9 S., R. 1 W.

12

Chains	Land, mountainous. Soil, rocky, 3rd and 4th rates. Timber, paloverde and mesquite. Undergrowth, greasewood, catclaw, jackthorn and cacti. Fair growth of grass.
	East, bet. secs. 4 and 33. Over mountainous land, thru scattering timber and undergrowth. Ascend 9 ft. over NW. slope.
1.65	Spur, slopes N.; desc. 277 ft. over steep, rocky E. slope.
8.90	Bottom of ravine, course N.; asc. 124 ft. over W. slope.
15.20	Short spur, slopes N.; desc. 12 ft. over E. slope to
15.66	Top of cliff, 75 ft. high, bearing N. and S., facing E.; desc. 293 ft. over steep E. slope.
22.00	Bottom of ravine, course NE.; asc. 4 ft. over NW. slope.
23.56	Point of spur, slopes N.; desc. 40 ft. over NE. slope.
25.10	Trail, bears N. 60°W. and S. 60°E.
26.00	Bottom of gulch, course S. 60°E.; asc. 113 ft. over SW. slope.
38.00	Low spur, slopes S.; desc. 15 ft. over SE. slope to
40.00	Set an iron post, 3 ft. long, 1 in. diam., 18 ins. in the ground to bedrock with a stone marked with a cross (X) deposited at base and in a mound of stone to top, for $\frac{1}{4}$ sec. cor., with brass cap marked $\frac{1}{4} \frac{S \ 33}{S \ 4}$ 1938 No bearing trees available. Descend 15 ft. over SE. slope.
41.60	Drain, course S.; asc. 120 ft. over steep SW. slope.
47.04	Spur, slopes S. From this point, base of perpendicular cliff bears N., 1.20 chs. dist. Cliff is 100 ft. high, and faces S. Desc. 107 ft. over SE. slope.
57.95	Bottom of ravine, course SW.; asc. 92 ft. over NW. slope.
62.84	Saddle in spur sloping S.; desc. 136 ft. over NE. slope.
76.80	Bottom of ravine, course SE.; asc. 21 ft. over SW. slope.
77.73	Spur, slopes SE.; desc. 26 ft. over NE. slope to
79.70	Set an iron post, 3 ft. long, 2 ins. diam., 5 ins. in the ground to bedrock over a cross (X) marked thereon and in a mound of stone to top, for witness cor. to cor. of secs. 3, 4, 33 and 34, with brass cap marked $\begin{array}{cc c} T8S & R1W & \\ \hline S33 & S34 & WC \\ \hline S \ 4 & S \ 3 & \\ \hline T9S & & \end{array}$ 1938

Survey: North Boundary of T. 9 S., R. 1 W.

BOOK 4230

13

Chains	
80.00	True point for the cor. of secs. 3, 4, 33 and 34 falls on insecure ground, on steep sloping rock bluff, where it is impracticable to monument the cor. therefore establish witness cor. 30 lks. W., as hereinbefore described. Land, mountainous. Soil, rocky, 3rd and 4th rates. Timber, paloverde and mesquite. Undergrowth, greasewood, catclaw, jackthorn and cacti. Fair growth of grass.
	From true point for cor. of secs. 3, 4, 33 and 34, East, bet. secs. 3 and 34. Over mountainous land, thru scattering timber and undergrowth. Descend 313 ft. over steep, rocky NE. slope.
4.91	Top of rocky butte, 110 ft. high, bears S., 2.00 chs. dist.
14.00	Foot of steep descent, bears N. and S. Leave mountainous and enter gently rolling land.
16.10	Wash, 10 lks. wide, course NE.
24.00	Trail, bears NE. and SW.
40.00	Set an iron post, 3 ft. long, 1 in. diam., 18 ins. in the ground to bedrock with a stone marked with a cross (X) deposited at base, and in a mound of stone to top, for $\frac{1}{4}$ sec. cor., with brass cap marked <div>$\begin{array}{r} \frac{1}{4} \quad \frac{S \ 34}{S \ 3} \\ 1938 \end{array}$</div> No bearing trees available. Continue over gently rolling land, thru scattering timber and undergrowth.
42.40	Wash, 35 lks. wide, course NE.
62.00	Top of butte, 50 ft. high, bears S. 2.50 chs. dist.
69.00	Trail, bears N. and S.
71.00	Wash, 5 lks. wide, course S. 60° E.
80.00	Set an iron post, 3 ft. long, 2 ins. diam., 28 ins. in the ground, for cor. of secs. 2, 3, 34 and 35, with brass cap marked <div>$\begin{array}{cc} T8S & R1W \\ S34 & S35 \\ S3 & S2 \\ T9S & \end{array}$</div> 1938 No bearing trees available. Raise a mound of stone, 3 ft. base, 2 ft. high, W. of cor.

Chains	<p>Land, mountainous and gently rolling. Soil, gravelly, 2nd and 3rd rates. Timber, mesquite, paloverde and ironwood. Undergrowth, greasewood, jackthorn, catclaw and cacti. Fair growth of grass.</p>
	<p>East, bet. secs. 2 and 35.</p> <p>Over gently rolling land, thru scattering timber and undergrowth.</p>
7.90	Wash, 8 lks. wide, course E., from SW., thence in wash.
12.70	Leave wash, course NE. from W.
26.00	Same wash, course S. 85° E.
28.20	Same wash, 12 lks. wide, course NE.
36.00	Wash, 4 lks. wide, course NE. near mouth.
37.00	Wash, 12 lks. wide, course S. 87° E. Same as noted above at 7.90, 26.00 and 28.20 ch. stations.
40.00	Set an iron post, 3 ft. long, 1 in. diam., 28 ins. in the ground, for $\frac{1}{4}$ sec. cor., with brass cap marked
	$\begin{array}{r} \frac{1}{4} \text{ S } 35 \\ \text{S } 2 \end{array}$ <p>1938</p> <p>No bearing trees available.</p> <p>Raise a mound of stone, 2 ft. base, 1$\frac{1}{2}$ ft. high, N. of cor.</p> <p>Continue over gently rolling land, thru scattering timber and undergrowth.</p>
77.70	Wash, 35 lks. wide, course N. 20° E.
80.00	Set an iron post, 3 ft. long, 2 ins. diam., 12 ins. in the ground to bedrock with a stone marked with a cross (X) deposited at base and in a mound of stone to top, for cor. of secs. 1, 2, 35 and 36, with brass cap marked
	$\begin{array}{r} \text{T8S} \quad \text{R1W} \\ \text{S35} \quad \quad \text{S36} \\ \text{S } 2 \quad \quad \text{S } 1 \\ \text{T9S} \end{array}$ <p>1938</p> <p>No bearing trees available.</p> <p>Land, gently rolling. Soil, gravelly, 2nd and 3rd rates. Timber, mesquite, paloverde, ironwood. Undergrowth, greasewood, catclaw, jackthorn and cacti. Fair grass.</p>
	<p>East, bet. secs. 1 and 36.</p> <p>Over gently rolling land, thru scattering timber and undergrowth.</p>
31.30	Wash, 12 lks. wide, course NE.

Survey; North Boundary of T. 9 S., R. 1 W.

BOOK 4230

15

Chains	
39.00	Wash, 10 lks. wide, course N.
40.00	Set an iron post, 3 ft. long, 1 in. diam., 27 ins. in the ground, for $\frac{1}{4}$ sec. cor., with brass cap marked
	$\frac{1}{4} \begin{array}{r} S 36 \\ S 1 \end{array}$
	1938
	No bearing trees available.
	Raise a mound of stone, 3 ft. base, 2 ft. high, N. of cor.
	Continue over gently rolling land, thru scattering timber and undergrowth.
45.20	Wash, 10 lks. wide, course N.; asc. gradually over NW. slope.
61.50	Low spur, slopes NE.; desc. 11 ft. over SE. slope.
75.00	Wash, 8 lks. wide, course N. 85° E.; thence along N. slope.
80.00	The cor. of Tps. 8 and 9 S., Rgs. 1 W. and 1 E. on the Gila and Salt River Meridian, reestablished in 1914, which is an iron post, 3 ins. in diam., projecting 8 ins. above ground firmly set, marked on brass cap and witnessed as described in the official record.
	Land, gently rolling.
	Soil, gravelly, 2nd and 3rd rates.
	Timber, mesquite, palo verde and ironwood.
	Undergrowth, greasewood, buckthorn, catclaw and cacti.
	Fair growth of grass.

Survey: Subdivision of T. 9 S., R. 1 W.

16

Chains	<p>The standard cor. of secs. 35 and 36 on S. bdy. of Tp. (2nd Std. Par. S.) reestablished in 1924, is an iron post, 2 ins. in diam., projecting 16 ins. above ground, firmly set in ground and mound of stone, properly marked on brass cap, and witnessed by a mound of stone N.</p> <p>Thence</p> <p>N. 0° 01' W., bet. secs. 35 and 36.</p> <p>Over heavily rolling and mountainous land, thru scattering timber and undergrowth. Descend slightly over NW. slope.</p> <p>0.20 Wash, 15 lks. wide, course NE.; asc. 46 ft. over SE. slope.</p> <p>6.60 Spur, slopes NE.; desc. 71 ft. over N. slope.</p> <p>14.85 Wash, 10 lks. wide, course E.; asc. 91 ft. over S. slope.</p> <p>19.66 Spur, slopes E.; desc. 42 ft. over N. slope.</p> <p>23.30 Wash, 20 lks. wide, course SE.; asc. 89 ft. over S. slope to</p> <p>27.70 S. edge of top of spur, sloping E. Thence across gently rolling top of spur.</p> <p>35.40 Leave top of spur. Desc. 36 ft. over N. slope.</p> <p>39.70 Draw, course E., near head. Asc. 5 ft. over S. slope to</p> <p>40.00 Set an iron post, 3 ft. long, 1 in. diam., 4 ins. in the ground to bedrock, over a cross (X) marked thereon and in a mound of stone to top, for $\frac{1}{4}$ sec. cor., with brass cap marked</p> <div>$\frac{1}{4}$ S35 S36 1938</div> <p>No bearing trees available.</p> <p>Ascend 39 ft. over S. slope.</p> <p>42.00 Spur, slopes E.; desc. 174 ft. over N. slope.</p> <p>61.20 Wash, 20 lks. wide, course NE.; asc. 130 ft. over SE. slope.</p> <p>71.00 Spur, slopes NE.; desc. 63 ft. over N. slope.</p> <p>77.00 Draw, course NE. turning to SE. at about 3 chs. NE. from this point; asc. 12 ft. over S. slope to</p> <p>80.00 Set an iron post, 3 ft. long, 2 ins. diam., 8 ins. in the ground to bedrock, with a stone marked with a cross (X) deposited at base, and in a mound of stone to top, for the cor. of secs. 25, 26, 35 and 36, with brass cap marked</p> <div><div>T9S R1W S26 S25 S35 S36</div><div>1938</div><p>No bearing trees available.</p></div>
--------	--

Survey: Subdivision of T. 9 S., R. 1 W.

BOOK 4230

17

Chains

Land, heavily and gently rolling and mountainous.
Soil, rocky, 4th rate.
Timber, paloverde, ironwood and mesquite.
Undergrowth, greasewood and cacti.

East, on random line, bet. secs. 25 and 36.

40.00 Set temp. $\frac{1}{4}$ sec. cor.

80.10 Intersect E. bdy. of Tp. (Gila and Salt River Meridian)
6 lks. S. of cor. of secs. 25, 30, 31 and 36, reestab-
lished in 1914, which is an iron post, 3 ins. in diam.,
projecting 36 ins. above ground, firmly set in a mound
of stone, properly marked on brass cap and witnessed
by a mound of stone W. A barbed wire fence (4 wire)
extends N. and S. thru this cor., along boundary of
Papago Indian Reservation.

Thence

S. 89° 57' W., on true line, bet. secs. 25 and 36.

Over heavily rolling land, thru scattering timber and
undergrowth. Ascend 60 ft. over broken N. and NE.
slopes.

14.10 Enter gently rolling land, desc. 45 ft. over gradual W.
slope to

40.05 Set an iron post, 3 ft. long, 1 in. diam., 12 ins. in the
ground to bedrock with a stone marked with a cross (X)
deposited at base, and in a mound of stone to top, for
 $\frac{1}{4}$ sec. cor., with brass cap marked

$\frac{1}{4}$ $\frac{S\ 25}{S\ 36}$

1938

No bearing trees available.

Descend 14 ft. over W. slope.

45.10 Draw, course N.; asc. 154 ft. over E. and SE. slopes.

74.40 Point of spur, slopes S.; desc. 25 ft. over SW. and S.
slopes to

80.10 The cor. of secs. 25, 26, 35 and 36.

Land, heavily and gently rolling.
Soil, rocky, 4th rate.
Timber, paloverde, mesquite and ironwood.
Undergrowth, greasewood and cacti.

N. 0° 01' W., bet. secs. 25 and 26.

Over heavily rolling land, thru scattering timber and
undergrowth. Ascend 51 ft. over S. slope.

7.15 Spur, slopes E.; desc. 164 ft. over N. slope.

21.23 Foot of slope, bears NE. and SW. Enter level land.

27.00 Wash, 30 lks. wide, course NE.

40.00 Set an iron post, 3 ft. long, 1 in. diam., 12 ins. in the
ground to bedrock with a stone marked with a cross (X)

Survey: Subdivision of T. 9 S., R. 1 W.

18

Chains

deposited at base, and in a mound of stone to top, for $\frac{1}{4}$ sec. cor., with brass cap marked

 $\frac{1}{4}$

S26 | S25

1938

No bearing trees available.

Continue over level land, thru scattering timber and undergrowth.

58.90 Wash, 60 lks. wide, course NE.

80.00 Set an iron post, 3 ft. long, 2 ins. diam., 28 ins. in the ground, for cor. of secs. 23, 24, 25 and 26, with brass cap marked

T9S	R1W
S23	S24
S26	S25

1938

No bearing trees available.

Raise a mound of stone, 3 ft. base, 2 ft. high, W. of cor.

Land, rolling and level.
Soil, gravelly and rocky, 3rd and 4th rates.
Timber, paloverde, mesquite and ironwood.
Undergrowth, cacti, sagebrush and greasewood.

N. 89° 57' E., on random line, bet. secs. 24 and 25.

40.00 Set temp. $\frac{1}{4}$ sec. cor.

80.14 Intersect E. bdy. of Tp. (Gila and Salt River Meridian), 2 lks. N. of cor. of secs. 19, 24, 25 and 30, reestablished in 1914, which is an iron post, 3 ins. in diam., projecting 10 ins. above ground, firmly set, properly marked on brass cap and witnessed by pits, one in each sec., and mound of earth W. A barbed wire fence (4 wire) extends N. and S. thru this cor. along bdy. of the Papago Indian Reservation.

Thence

S. 89° 58' W., on true line, bet. secs. 24 and 25.

Over gently rolling land, thru scattering timber and undergrowth.

10.34 Ungraded road, bears NW. and S. Turns to E. at about 1 ch. S. of this point.

40.07 Set an iron post, 3 ft. long, 1 in. diam., 10 ins. in the ground to bedrock with a stone marked with a cross (X) deposited at base and in a mound of stone to top, for $\frac{1}{4}$ sec. cor., with brass cap marked

$\frac{1}{4}$	S 24
	S 25

1938

No bearing trees available.

Chains	Thence over gently rolling land and nearly level land.
80.14	The cor. of secs. 23, 24, 25 and 26. Land, gently rolling and nearly level. Soil, gravelly and rocky, 3rd and 4th rates. Timber, paloverde, mesquite and ironwood. Undergrowth, greasewood, sagebrush and cacti.
	N. 0° 01' W., bet. secs. 23 and 24. Over nearly level land, thru scattering timber and undergrowth.
31.00	Wash, 40 lks. wide, course NE. Enter rolling land; asc. 65 ft. over SE. slope to
40.00	Set an iron post, 3 ft. long, 1 in. diam., 18 ins. in the ground to bedrock, with a stone marked with a cross (X) deposited at base, and in a mound of stone to top, for 1/4 sec. cor., with brass cap marked S23 S24 1938 No bearing trees available. Enter heavily rolling land. Ascend 39 ft. over SE. slope.
42.22	Spur, slopes E.; desc. 92 ft. over N. slope.
45.83	Draw, course NE. from W.; asc. 23 ft. over SE. slope.
50.82	Point of low spur; slopes E.; desc. 41 ft. over N. slope to
55.30	Foot of slope, bears E. and W. Thence over nearly level land.
62.00	Ungraded road, bears N. 60°W. and S. 60°E.
67.30	Wash, 20 lks. wide, course NE.
80.00	Set an iron post, 3 ft. long, 2 ins. diam., 18 ins. in the ground to bedrock, with a stone marked with a cross (X) deposited at base and in a mound of stone to top, for cor. of secs. 13, 14, 23 and 24, with brass cap marked T9S R1W S14 S13 S23 S24 1938 No bearing trees available. Land, nearly level, gently and heavily rolling. Soil, gravelly and rocky, 3rd and 4th rates. Timber, paloverde, ironwood and mesquite. Undergrowth, greasewood, sagebrush and cacti.

Survey: Subdivision of T. 9 S., R. 1 W.

20

Chains	
	N. 89° 58' E. on random line, bet. secs. 13 and 24.
40.00	Set temp. $\frac{1}{4}$ sec. cor.
80.08	Intersect E. bdy. of Tp. (Gila & Salt River Meridian) 3 lks. S. of cor. of secs. 13, 18, 19 and 24, reestablished in 1914, which is an iron post, 3 ins. in diam., projecting 26 ins. above ground, firmly set in ground and mound of stone, properly marked on brass cap and witnessed by a mound of stone W. A barbed wire fence (4 wire) extends E. and S. from this cor., along the boundary of the Papago Indian Reservation.
	Thence
	S. 89° 57' W., on true line, bet. secs. 13 and 24.
	Over mountainous land, thru scattering timber and undergrowth. Ascend 176 ft. over NE. and E. slopes.
19.48	Spur, slopes S.; desc. 46 ft. over W. slope.
26.35	Wash, 20 lks. wide, course SE.; asc. 144 ft. over E. slope.
33.88	Spur, slopes SE.; desc. 126 ft. over SW. slope to
40.04	Set an iron post, 3 ft. long, 1 in. diam., 12 ins. in the ground to bedrock, with a stone marked with a cross (X) deposited at base and in a mound of stone to top, for $\frac{1}{4}$ sec. cor., with brass cap marked
	$\frac{1}{4} \begin{array}{r} S 13 \\ S 24 \end{array}$
	1938
	No bearing trees available.
	Descend 20 ft. over SW. slope.
43.08	Wash, 20 lks. wide, course SE.; asc. 74 ft. over E. slope.
49.00	Spur, slopes SE. Enter rolling land; desc. 40 ft. over SW. slope to
56.48	Foot of slope, bears NW. and SE.; thence over nearly level land.
65.48	Wash, 60 lks. wide, course SE.
80.08	The cor. of secs. 13, 14, 23 and 24.
	Land, mountainous, rolling and nearly level. Soil, gravelly and rocky, 3rd and 4th rates. Timber, ironwood, paloverde and mesquite. Undergrowth, greasewood, sagebrush and cacti.
	N. 0° 01' W., bet. secs. 13 and 14.
	Over nearly level land, thru scattering timber and undergrowth.
22.70	Wash, 30 lks. wide, course SE.
25.00	Enter heavily rolling and mountainous land. Ascend 144 ft. over SW. slope.
36.26	Spur, slopes SE.; desc. 45 ft. over NE. slope to

Survey: Subdivision of T. 9 S., R. 1 W.

BOOK 4230
21

Chains	
40.00	Set an iron post, 3 ft. long, 1 in. diam., 6 ins. in the ground to bedrock, with a stone marked with a cross (X) deposited at base and in a mound of stone to top, for $\frac{1}{4}$ sec. cor., with brass cap marked
	<div style="text-align: center;"> $\frac{1}{4}$ S14 S13 1938 </div>
	No bearing trees available.
	Descend 85 ft. over NE. slope.
47.90	Wash, 20 lks. wide, course SE.; asc. 65 ft. over SW. slope.
56.00	Spur, slopes SE.; desc. 120 ft. over NE. slope.
68.00	Wash, 50 lks. wide, course SE.; asc. 186 ft. over SW. slope.
78.50	Spur, slopes S. 85° E.; desc. 43 ft. over NE. slope to
80.00	Set an iron post, 3 ft. long, 2 ins. diam., 2 ins. in the ground to bedrock over a cross (X) marked thereon and in a mound of stone to top, for cor. of secs. 11, 12, 13 and 14, with brass cap marked
	<div style="text-align: center;"> T9S R1W S11 S12 S14 S13 1938 </div>
	No bearing trees available.
	Land, nearly level, heavily rolling and mountainous. Soil, gravelly and rocky, 3rd and 4th rates. Timber, paloverde, ironwood and mesquite. Undergrowth, greasewood, sagebrush and cacti.
	N. 89° 57' E., on random line, bet. secs. 12 and 13.
40.00	Set temp. $\frac{1}{4}$ sec. cor.
80.14	Intersect E. bdy. of Tp. (Gila & Salt River Meridian), 8 lks. S. of cor. of secs. 7, 12, 13 and 18, reestablished in 1914, which is an iron post, 3 ins. in diam., projecting 10 ins. above ground, firmly set in ground, properly marked on brass cap, and witnessed by pits, one in each sec., and mound of earth W.
	Thence
	S. 89° 54' W., on true line, bet. secs. 12 and 13.
	Over gently rolling land, thru scattering timber and undergrowth. Asc. gradually over E. slope.
18.66	Enter heavily rolling and mountainous land; asc. 184 ft. over NE. slope.
33.06	Spur, slopes SE.; thence across top of spur.
35.14	Leave top of spur; desc. 29 ft. over SW. slope to
40.07	Set an iron post, 3 ft. long, 1 in. diam., 14 ins. in the

Survey: Subdivision of T. 9 S., R. 1 W.

22

Chains	<p>ground to bedrock, with a stone marked with a cross (X) deposited at base and in a mound of stone to top, for $\frac{1}{4}$ sec. cor., with brass cap marked</p> $\frac{1}{4} \begin{array}{r} S\ 12 \\ S\ 13 \end{array}$ <p>1938</p> <p>No bearing trees available.</p> <p>Desc. 17 ft. over SW. slope.</p> <p>43.14 Low saddle, bears N. and S.; asc. 167 ft. over NE. slope.</p> <p>49.54 Spur, slopes N. Thence across top of spur.</p> <p>51.14 Leave top of spur; desc. 103 ft. over W. slope.</p> <p>62.27 Bottom of ravine, 70 lks. wide, course N.; asc. 72 ft. over E. slope to</p> <p>66.51 Asc. along broken N. slope.</p> <p>71.80 Desc. 32 ft. over NW. slope.</p> <p>75.18 Head of ravine, course NE.; asc. 40 ft. over NE. slope to</p> <p>80.14 The cor. of secs. 11, 12, 13 and 14.</p> <p>Land, gently and heavily rolling and mountainous. Soil, gravelly and rocky, 3rd and 4th rates. Timber, paloverde, ironwood and mesquite. Undergrowth, greasewood, sagebrush and cacti.</p>
	<hr/> <p>N. 0° 01' W., bet. secs. 11 and 12.</p> <p>Over mountainous land, thru scattering timber and undergrowth. Descend 162 ft. over NE. slope to</p> <p>13.00 Wash, 30 lks. wide, course NE. Enter gently rolling land. Desc. 60 ft. over NE. slope to</p> <p>40.00 Set an iron post, 3 ft. long, 1 in. diam., 18 ins. in the ground to bedrock, with a stone marked with a cross (X) deposited at base, and in a mound of stone to top, for $\frac{1}{4}$ sec. cor., with brass cap marked</p> $\frac{1}{4} \begin{array}{r} S11\ \ S12 \end{array}$ <p>1938</p> <p>No bearing trees available.</p> <p>Continue over gently rolling land, thru scattering timber and undergrowth. Desc. gradually over NE. slope.</p> <p>78.75 Draw, course NW. from E.; asc. gradually over S. slope to</p> <p>80.00 Set an iron post, 3 ft. long, 2 ins. diam., 14 ins. in the ground to bedrock, with a stone marked with a cross (X) deposited at base and in a mound of stone to top, for cor. of secs. 1, 2, 11 and 12, with brass cap marked</p> $\begin{array}{r} T9S\ \ R1W \\ S2\ \ S1 \\ S11\ \ S12 \end{array}$ <p>1938</p>

Chains	<p>No bearing trees available.</p> <p>Land, mountainous and gently rolling. Soil, gravelly and rocky, 3rd and 4th rates. Timber, paloverde, ironwood and mesquite. Undergrowth, greasewood, sagebrush and cacti.</p>
	<p>N. 89° 54' E., on random line, bet. secs. 1 and 12.</p>
40.00	Set temp. $\frac{1}{4}$ sec. cor.
80.10	Intersect E. bdy. of Tp. (Gila & Salt River Meridian), 2 lks. N. of cor. of secs. 1, 6, 7 and 12, reestablished in 1914, which is an iron post, 3 ins. in diam., project- ing 10 ins. above ground, firmly set, properly marked on brass cap and witnessed by pits, one in each section, and mound of earth W.
	Thence
	S. 89° 55' W., on true line, bet. secs. 1 and 12.
	Over gently rolling land, thru scattering timber and undergrowth. Asc. gradually over NE. slope.
25.10	Wash, 40 lks. wide, course NE.
40.05	Set an iron post, 3 ft. long, 1 in. diam., 12 ins. in the ground to bedrock, with a stone marked with a cross (X) deposited at base and in a mound of stone to top, for $\frac{1}{4}$ sec. cor., with brass cap marked
	<p style="text-align: center;"> $\frac{1}{4}$ $\frac{S\ 1}{S\ 12}$ 1938 </p>
	<p>No bearing trees available.</p> <p>Continue over gently rolling land, thru scattering timber and undergrowth. Asc. gradually over NE. slope to</p>
46.10	Wash, 20 lks. wide, course NE.; asc. 102 ft. over NE. and N. slopes to
70.80	Draw, course SW. near head; desc. gradually over S. slope to
80.10	The cor. of secs. 1, 2, 11 and 12.
	<p>Land, gently rolling. Soil, gravelly and rocky, 3rd and 4th rates. Timber, paloverde, ironwood and mesquite. Undergrowth, greasewood, sagebrush and cacti.</p>
	N. 0° 01' W., on random line, bet. secs. 1 and 2.
40.00	Set temp. $\frac{1}{4}$ sec. cor.
80.10	Intersect N. bdy. of Tp., 14 lks. W. of the cor. of secs. 1, 2, 35 and 36, hereinbefore described.
	Thence
	S. 0° 05' W., on true line, bet. secs. 1 and 2.
	Over gently rolling land, thru scattering timber and under- growth. Asc. gradually over NE. and N. slopes to

Chains	
31.70	Foot of slope, bears E. and W. Asc. 53 ft. over N. slope.
40.10	Spur, slopes E. Set an iron post, 3 ft. long, 1 in. diam., on exposed bedrock, over a cross (X) marked thereon and in a mound of stone to top, for $\frac{1}{4}$ sec. cor., with brass cap marked
	$\frac{1}{4}$
	S2 S1
	1938
	No bearing trees available.
	Descend 34 ft. over S. slope to
46.44	Foot of slope bears E. and W. Desc. gradually over S. and SE. slopes.
62.30	Wash, 50 lks. wide, course NE.; asc. 40 ft. over N. slope.
75.90	Low spur, slopes W. near point of same; desc. gradually over S. slope to
80.10	The cor. of secs. 1, 2, 11 and 12. Land, gently rolling. Soil, gravelly and rocky; 3rd and 4th rates. Timber, paloverde, ironwood and mesquite. Undergrowth, greasewood, sagebrush and cacti.
	The standard cor. of secs. 34 and 35, on the S. bdy. of the Tp. (2nd Std. Par. S.) reestablished in 1924, is an iron post, 2 ins. in diam., projecting 24 ins. above ground, firmly set in ground and mound of stone and properly marked on brass cap.
	Thence
	N. $0^{\circ} 01'$ W., bet. secs. 34 and 35.
	Over mountainous land, thru scattering timber and undergrowth. Descend 52 ft. over rocky N. slope.
2.16	Draw, 10 lks. wide, course S. 70° E.; asc. 160 ft. over rocky S. slope to
11.00	Spur, slopes E.; thence across rolling top of spur, descending 79 ft. to
25.86	Leave top of spur; desc. 282 ft. over steep N. slope to
37.14	Foot of slope bears NW. and SE. Thence across gently rolling bottom of canyon. Desc. 10 ft. to
40.00	Set an iron post, 3 ft. long, 1 in. diam., 27 ins. in the ground, for $\frac{1}{4}$ sec. cor., with brass cap marked
	$\frac{1}{4}$
	S34 S35
	1938
	No bearing trees available.
	Raise a mound of stone, 3 ft. base, 2 ft. high, W. of cor.

Survey: Subdivision of T. 9 S., R. 1 W.

BOOK 4236

25

Chains	
	Desc. slightly across bottom of canyon.
41.50	Wash, course S. 50° E. Leave bottom of canyon. Enter heavily rolling and mountainous land; asc. 160 ft. over S. slope.
50.85	Razorback spur, slopes E.; desc. 112 ft. over NE. slope.
59.60	Wash, course SE.; asc. 181 ft. over SW. slope to
80.00	Set an iron post, 3 ft. long, 2 ins. diam., 3 ins. in the ground to bedrock, with a stone marked with a cross (X) deposited at base, and in a mound of stone to top, for cor. of secs. 26, 27, 34 and 35, with brass cap marked

T9S	R1W
S27	S26
S34	S35

1938

No bearing trees available.

Land, mountainous, gently and heavily rolling.
Soil, rocky, 4th rate.
Timber, paloverde and ironwood.
Undergrowth, greasewood and cacti.

	East, on random line, bet. secs. 26 and 35.
40.00	Set temp. $\frac{1}{4}$ sec. cor.
80.00	Intersect N. and S. line, 2 lks. S. of the cor. of secs. 25, 26, 35 and 36.
	Thence
	S. 89° 59' W., on true line, bet. secs. 26 and 35.
	Over heavily rolling land, thru scattering timber and undergrowth. Along S. slope. Asc. 16 ft.
3.39	Desc. 6 ft.
4.50	Asc. 58 ft.
10.93	Desc. 64 ft.
15.10	Desc. 40 ft. over SW. slope.
17.22	Draw, course S. 30° E.; asc. 68 ft. over NE. slope.
22.00	Point of spur, slopes N.; desc. 53 ft. over broken NW. slope.
33.22	Same draw, course NE.; asc. 62 ft. over SE. slope.
38.30	Point of spur, slopes S.; desc. 16 ft. over SW. slope to
40.00	Set an iron post, 3 ft. long, 1 in. diam., 6 ins. in the ground to bedrock, with a stone marked with a cross (X) deposited at base, and in a mound of stone to top, for $\frac{1}{4}$ sec. cor., with brass cap marked

$\frac{1}{4}$	S 26
	S 35

1938

No bearing trees available.

Survey: Subdivision of T. 9 S., R. 1 W.

26

Chains	Descend 32 ft. over SW. slope.
43.32	Same draw, course SE. Enter heavily rolling and mountainous land; asc. 240 ft. over NE. slope.
76.40	Spur ridge, bears NW. and SE. sloping SE.; desc. 75 ft. over SW. slope to
80.00	The cor..of secs..26, 27, 34 and 35. Land, heavily rolling and mountainous. Soil, rocky, 4th rate. Timber, paloverde and ironwood. Undergrowth, greasewood and cacti.
	N. 0° 01' W., bet. secs. 26 and 27. Over heavily rolling land, thru scattering timber and undergrowth. Ascend 49 ft. over SW. slope.
6.05	Spur ridge, bearing NW. and SE., sloping SE.; thence across top of same.
12.50	Leave top of spur ridge; desc. 60 ft. over NE. slope.
21.00	Wash, 20 lks. wide, course SE. Thence over gently rolling land.
38.19	Enter mountainous land; desc. 64 ft. over steep N. slope to
40.00	Set an iron post, 3 ft. long, 1 in. diam., 12 ins. in the ground to bedrock, with a stone marked with a cross (X) deposited at base, and in a mound of stone to top, for $\frac{1}{4}$ sec. cor., with brass cap marked $\frac{1}{4}$ S27 S26 1938 No bearing trees available. Descend 157 ft. over steep N. slope to
49.00	Foot of slope, bears NE. and SW. Enter gently rolling land.
56.40	Wash, 30 lks. wide, course E. turning to NE. about 2 chs. E. of this point. Thence over nearly level land.
80.00	Set an iron post, 3 ft. long, 2 ins. diam., 6 ins. in the ground to bedrock, with a stone marked with a cross (X) deposited at base, and in a mound of stone to top, for cor. of secs. 22, 23, 26 and 27, with brass cap marked T9S. R1W S22 S23 S27 S26 1938 No bearing trees available. Land, heavily rolling, mountainous, gently rolling and nearly level. Soil, gravelly and rocky, 3rd and 4th rates. Timber, paloverde, ironwood and mesquite. Undergrowth, greasewood, sagebrush and cacti.

Survey: Subdivision of T. 9 S., R. 1 W.

BOOK 4230

27

Chains	N. 89° 59' E. on random line, bet. secs. 23 and 26.
40.00	Set temp. $\frac{1}{4}$ sec. cor.
80.00	Intersect N. and S. line, 7 lks. N. of the cor. of secs. 23, 24, 25 and 26.
	Thence
	N. 89° 58' W., on true line, bet. secs. 23 and 26.
	Over nearly level land, thru scattering timber and undergrowth.
20.00	Low spur, slopes N.
40.00	Set an iron post, 3 ft. long, 1 in. diam., 6 ins. in the ground to bedrock, with a stone marked with a cross (X) deposited at base, and in a mound of stone to top, for $\frac{1}{4}$ sec. cor., with brass cap marked
	$\frac{1}{4}$ $\frac{S\ 23}{S\ 26}$
	1938
	No bearing trees available.
	Continue over nearly level land, thru scattering timber and undergrowth.
68.00	Wash, 15 lks. wide, course NE.
80.00	The cor. of secs. 22, 23, 26 and 27.
	Land, nearly level.
	Soil, gravelly and rocky, 3rd and 4th rates.
	Timber, paloverde, ironwood and mesquite.
	Undergrowth, greasewood and sagebrush.
	N. 0° 01' W., bet. secs. 22 and 23.
	Over nearly level land, thru scattering timber and undergrowth.
14.60	Wash, 15 lks. wide, course NE.
40.00	Set an iron post, 3 ft. long, 1 in. diam., 28 ins. in the ground, for $\frac{1}{4}$ sec. cor., with brass cap marked
	$\frac{1}{4}$
	S22 S23
	1938
	No bearing trees available.
	Raise a mound of stone, 2½ ft. base, 1½ ft. high, W. of cor.
	Continue over nearly level land, thru scattering timber and undergrowth.
45.20	Wash, 100 lks. wide, course NE.
50.00	Foot of slope, bears E. and W. Enter gently rolling land; asc. 50 ft. over S. slope.

Survey: Subdivision of T. 9 S., R. 1 W.

28

Chains	
59.40	Spur, slopes W.; desc. 46 ft. over N. slope to
64.50	Foot of slope, bears NE. and SW. Thence over nearly level land.
66.80	Ungraded road, bears NE. and SW.
79.90	Wash, 10 lks. wide, course NE.
80.00	Set an iron post, 3 ft. long, 2 ins. diam., 1 1/4 ins. in the ground to bedrock, with a stone marked with a cross (X) deposited at base, and in a mound of stone to top, for cor. of secs. 14, 15, 22 and 23, with brass cap marked
	<div>T9S · R1W</div> <div>S15 S14</div> <div>S22 S23</div>
	1938
	No bearing trees available.
	Land, nearly level and gently rolling. Soil, gravelly and rocky, 3rd and 4th rates. Timber, paloverde, ironwood and mesquite. Undergrowth, greasewood, sagebrush and cacti.
	S. 89° 58' E., on random line, bet. secs. 14 and 23.
40.00	Set temp. 1/4 sec. cor.
80.04	Intersect N. and S. line, 2 lks. N. of the cor. of secs. 13, 14, 23 and 24.
	Thence
	N. 89° 57' W., on true line, bet. secs. 14 and 23.
	Over nearly level land, thru scattering timber and undergrowth.
8.00	Wash, 100 lks. wide, course SE.
27.84	Wash, 40 lks. wide, course SE.
40.02	Set an iron post, 3 ft. long, 1 in. diam., on exposed bedrock over a cross (X) marked thereon, and in a mound of stone to top, for 1/4 sec. cor., with brass cap marked
	<div>1/4 S 14</div> <div>S 23</div>
	1938
	No bearing trees available.
	Continue over nearly level land, thru scattering timber and undergrowth.
79.90	Wash, 10 lks. wide, course NE.
80.04	The cor. of secs. 14, 15, 22 and 23.
	Land, nearly level. Soil, gravelly and rocky, 3rd and 4th rates. Timber, paloverde, ironwood and mesquite. Undergrowth, greasewood, sagebrush and cacti.

Chains	N. 0° 01' W., bet. secs. 14 and 15. Over gently rolling land, thru scattering timber and undergrowth. Ascend 33 ft. over S. slope. 8.50 Low ridge, bears E. and W.; desc. 45 ft. over N. slope. 24.25 Wash, 45 lks. wide, course SE.; asc. gradually over SE. slope. 38.10 Wash, 20 lks. wide, course SE.; asc. slightly over SW. slope to 40.00 Set an iron post, 3 ft. long, 1 in. diam., on exposed bedrock, over a cross (X) marked thereon and in a mound of stone to top, for $\frac{1}{4}$ sec. cor., with brass cap marked <div>S15 S14</div> <div>1938</div> <div>from which</div> <div>A paloverde, 4 ins. diam., bears S. 2° W., 15 lks. dist., marked $\frac{1}{4}$ S15 BT.</div> <div>No other bearing tree available.</div> <div>Continue over gently rolling land, thru scattering timber and undergrowth.</div> <div>40.35 Wash, 8 lks. wide, course SW.; asc. 60 ft. over SW. slope to</div> <div>59.90 Cut wash, 8 lks. wide, 10 ft. deep, course SW. Enter heavily rolling and mountainous land; asc. 122 ft. over SW. slope.</div> <div>72.67 Spur, slopes SE.; desc. 27 ft. over E. slope.</div> <div>77.15 Wash, 6 lks. wide, in bottom of rocky ravine, course SE.; asc. 42 ft. over SW. slope to</div> <div>80.00 Set an iron post, 3 ft. long, 2 ins. diam., 22 ins. in the ground to bedrock and in a mound of stone to top, for the cor. of secs. 10, 11, 14 and 15, with brass cap marked <div>T9S R1W</div><div>S10 S11</div><div>S15 S14</div><div>1938</div><div>No bearing trees available.</div><div>Raise a mound of stone, 3 ft. base, 2 ft. high, W. of cor.</div><div>Land, gently and heavily rolling and mountainous. Soil, gravelly and rocky, 2nd, 3rd, and 4th rates. Timber, paloverde, ironwood and mesquite. Undergrowth, greasewood, jackthorn, catclaw and cacti.</div></div>
	S. 89° 57' E., on random line, bet. secs. 11 and 14..
40.00	Set temp. $\frac{1}{4}$ sec. cor.
80.10	Intersect N. and S. line, 7 lks. S. of the cor. of secs. 11, 12, 13 and 14.

Survey: Subdivision of T. 9 S., R. 1 W.

30

Chains	Thence
	West, on true line, bet. secs. 11 and 14. Over mountainous land, thru scattering timber and undergrowth. Ascend 104 ft. over NE. slope.
1.80	Rocky ledge, faces NE.
2.10	Spur, slopes SE.; desc. 114 ft. over steep SW. slope.
8.50	Ravine, course SE., heads 6.00 chs. NW.; asc. 160 ft. over steep NE. slope.
14.05	Spur, slopes SE.; desc. 24 ft. over SW. slope.
17.55	Asc. 73 ft. over S. and SE. slopes.
28.35	Spur, slopes S.; desc. 115 ft. over SW. slope.
38.35	Ravine, course SE. Mouth of another ravine from N., bears N. 50 lks. dist. Ascend 93 ft. over NE. slope to
40.05	Set an iron post, 3 ft. long, 1 in. diam., on exposed bedrock, over a cross (X) marked thereon, and in a mound of stone to top, for $\frac{1}{4}$ sec. cor., with brass cap marked
	$\frac{1}{4} \frac{S \ 11}{S \ 14}$ <p>1938</p> <p>No bearing trees available.</p> <p>Ascend 109 ft. over NE. slope.</p>
43.23	Spur, slopes SE.; desc. 172 ft. over SW. slope.
57.90	Wash, 5 lks. wide, in bottom of gulch, course SE.; asc. 270 ft. over steep NE. slope.
68.60	Spur, slopes SE.; desc. 254 ft. over steep, rocky SW. slope to
80.10	The cor. of secs. 10, 11, 14 and 15. Land, mountainous. Soil, rocky, 3rd and 4th rates. Timber, paloverde, ironwood and mesquite. Undergrowth, greasewood, jackthorn, catclaw and cacti.
	N. 0° 01' W., bet. secs. 10 and 11. Over mountainous land, thru scattering timber and undergrowth. Ascend 303 ft. over steep, rocky SW. slope.
14.00	Spur, slopes SE.; desc. 57 ft. over E. slope.
17.70	Head of gulch, course SE.; asc. 111 ft. over SE. slope.
21.53	Solid rock ridge, bears E. and S. 10° W. A rock pinnacle 12 ft. high, bears SE., 20 lks. dist. Desc. 330 ft. over steep, broken N. slope to
40.00	Set an iron post, 3 ft. long, 1 in. diam., 22 ins. in the ground to bedrock, and in a mound of stone to top, for $\frac{1}{4}$ sec. cor., with brass cap marked

Survey: Subdivision of T. 9 S., R. 1 W.

BOOK 4230

31

Chains

 $\frac{1}{4}$

S10 | S11

1938

No bearing trees available.

Raise a mound of stone, 3 ft. base, 2 ft. high, W. of cor.

Descend 168 ft. over broken N. slope.

59.78 Wash, 30 lks. wide, course NE. Enter rolling land. Asc. 107 ft. over S. slope.

70.20 Trail, bears NE. and SW.

72.00 Spur, slopes E.; desc. 68 ft. over N. slope to

80.00 Set an iron post, 3 ft. long, 2 ins. diam., 24 ins. in the ground, to bedrock and in a mound of stone to top, for cor. of secs. 2, 3, 10 and 11, with brass cap marked

T9S	R1W
S3	S2
S10	S11

1938

No bearing trees available.

Raise a mound of stone, 3 ft. base, 2 ft. high, W. of cor.

Land, mountainous and rolling.
 Soil, rocky, 3rd and 4th rates.
 Timber, paloverde, ironwood and mesquite.
 Undergrowth, greasewood, catclaw, jackthorn and cacti.

East, on random line, bet. secs. 2 and 11.

40.00 Set temp. $\frac{1}{4}$ sec. cor.

80.06 Intersect the cor. of secs. 1, 2, 11 and 12.

Thence

West, on true line, bet. secs. 2 and 11.

Over rolling land, thru scattering timber and undergrowth.
Desc. 12 ft. over SW. slope.

3.16 Draw, course NW.; desc. gradually over N. slope.

8.96 Wash, 40 lks. wide, course NE.; asc. 80 ft. over SE. slope.

18.00 Thence over rolling S. slope; desc. 30 ft.

30.00 Asc. 33 ft. to

40.03 Set an iron post, 3 ft. long, 1 in. diam., 28 ins. in the ground, for $\frac{1}{4}$ sec. cor., with brass cap marked

$\frac{1}{4}$	S 2
	S 11

1938

Survey: Subdivision of T. 9 S., R. 1 W.

32

Chains	
	No bearing trees available.
	Raise a mound of stone, 3 ft. base, 2 ft. high, N. of cor.
	Continue over rolling S. slope. Asc. 20 ft.
44.30	Desc. 7 ft.
47.35	Asc. 35 ft.
57.30	Desc. 23 ft.
62.35	Asc. 30 ft. over SE. slope.
62.86	Trail, bears N. and S.
67.30	Spur, slopes NE. for 3.00 chs., thence E.; desc. 37 ft. over NW. slope.
73.26	Ravine, course NW., near head; asc. 17 ft. over NE. slope.
75.76	Desc. 25 ft. over N. slope to
80.06	The cor. of secs. 2, 3, 10 and 11.
	Land, rolling.
	Soil, gravelly, 2nd and 3rd rates.
	Timber, paloverde, ironwood and mesquite.
	Undergrowth, greasewood, jackthorn, catclaw and cacti.
	N. 0° 01' W., on random line, bet. secs. 2 and 3.
40.00	Set temp. $\frac{1}{4}$ sec. cor.
80.20	Intersect N. bdy. of Tp., 28 lks. W. of the cor. of secs. 2, 3, 34 and 35, hereinbefore described.
	Thence
	S. 0° 11' W., on true line, bet. secs. 2 and 3.
	Over gently rolling land, thru scattering timber and undergrowth. Desc. 5 ft. over S. slope.
1.90	Wash, 8 lks. wide, course E.; asc. 14 ft. over NE. slope.
4.00	Desc. 40 ft. over E. slope.
21.20	Wash, 10 lks. wide, course E. Asc. 60 ft. over E. slope to $\frac{1}{4}$ sec. cor.
22.20	Trail, bears N. 20° W. and S. 20° E.
40.20	Set an iron post, 3 ft. long, 1 in. diam., 28 ins. in the ground, for $\frac{1}{4}$ sec. cor., with brass cap marked
	$\frac{1}{4}$
	S3 S2
	1938
	No bearing trees available.
	Raise a mound of stone, 3 ft. base, 2 ft. high, W. of cor.
	Desc. 20 ft. over E. slope.

Chains

- 43.65 Wash, 20 lks. wide, course E.; asc. 86 ft. over N. slope.
 53.20 Spur, slopes E.; desc. 60 ft. over S. slope.
 66.90 Wash, 10 lks. wide, course E.; asc. 25 ft. over NE. slope.
 76.80 Wash, 5 lks. wide, course NE.; asc. 28 ft. over N. slope to.
 80.20 The cor. of secs. 2, 3, 10 and 11.

Land, gently rolling.
 Soil, gravelly and rocky, 2nd and 3rd rates.
 Timber, paloverde, ironwood and mesquite.
 Undergrowth, greasewood, jackthorn, catclaw and cacti.

The standard cor. of secs. 33 and 34, on the S. bdy. of the Tp. (2nd Std. Par. S.) reestablished in 1924, is an iron post, 2 ins. in diam., projecting 20 ins. above ground, firmly set in ground and mound of stone, properly marked on brass cap and witnessed by a mound of stone N.

Thence

N. 0° 02' W., bet. secs. 33 and 34.

Over rolling land, thru scattering timber and undergrowth. Descend 32 ft. over NW. slope.

- 9.10 Draw, course NE.; asc. 40 ft. over SE. slope.
 14.07 Long spur, slopes NE.; desc. 126 ft. over NW. slope.
 29.25 Head of draw, course N. 30° E.; asc. 52 ft. over S. slope.
 39.84 Spur, slopes E. Thence over top of spur.
 40.00 Set an iron post, 3 ft. long, 1 in. diam., 6 ins. in the ground to bedrock, with a stone marked with a cross (X) deposited at base, and in a mound of stone to top, for $\frac{1}{4}$ sec. cor., with brass cap marked
 S33 | S34
 1938
 No bearing trees available.
 41.05 Leave top of spur. Enter mountainous land; desc. 198 ft. over N. slope.
 50.70 Wash, 30 lks. wide, course E.; asc. 215 ft. over S. slope.
 65.75 Spur, slopes SE.; desc. 125 ft. over NE. slope.
 71.24 Draw, course SE.; asc. 122 ft. over SW. slope to
 80.00 Set an iron post, 3 ft. long, 2 ins. diam., 12 ins. in the ground to bedrock, with a stone marked with a cross (X) deposited at base and in a mound of stone to top, for cor. of secs. 27, 28, 33 and 34, with brass cap marked

T9S R1W
 S28 | S27
 S33 | S34

1938

Survey: Subdivision of T. 9 S., R. 1 W.

34

Chains	
	No bearing trees available. Land, rolling and mountainous. Soil, rocky, 4th rate. Timber, paloverde. Undergrowth, cacti.
	East, on random line, bet. secs. 27 and 34.
40.00	Set temp. $\frac{1}{4}$ sec. cor.
80.06	Intersect N. and S. line, 4 lks. N. of the cor. of secs. 26, 27, 34 and 35. Thence N. 89° 58' W., on true line, bet. secs. 27 and 34. Over heavily rolling and mountainous land, thru scattering timber and undergrowth. Descend 140 ft. over SW. slope.
12.50	Wash, course SE.; asc. 103 ft. over E. slope.
19.80	Spur, slopes SE.; desc. 41 ft. over SW. slope.
29.00	Draw, course S. 70° E.; asc. 215 ft. over broken E. slope to
40.03	Set an iron post, 3 ft. long, 1 in. diam., 12 ins. in the ground to bedrock, with a stone marked with a cross (X) deposited at base, and in a mound of stone to top, for $\frac{1}{4}$ sec. cor., with brass cap marked $\frac{1}{4} \frac{S \ 27}{S \ 34}$ 1938 No bearing trees available. Ascend 74 ft. over E. slope.
46.00	Rocky ridge, bears NW. and SE.; desc. 224 ft. over SW. slope.
66.10	Ravine, course S.; asc. 153 ft. over E. slope.
73.70	Spur, slopes S.; desc. 37 ft. over SW. slope to
80.06	The cor. of secs. 27, 28, 33 and 34. Land, heavily rolling and mountainous. Soil, rocky, 4th rate. Timber, paloverde. Undergrowth, cacti.
	N. 0° 02' W., bet. secs. 27 and 28. Over mountainous land, thru scattering timber and undergrowth. Ascend 133 ft. over SW. slope.
19.90	Ridge, bears NW. and SE.; desc. 105 ft. over N. slope.
34.22	Ravine, course E.; asc. 149 ft. over S. slope to
40.00	Set an iron post, 3 ft. long, 1 in. diam., 6 ins. in the ground to bedrock, with a stone marked with a cross (X) deposited at base, and in a mound of stone to top, for

Chains

$\frac{1}{4}$ sec. cor., with brass cap marked

$\frac{1}{4}$

S27 | S28

1938

No bearing trees available.

Ascend 81 ft. over S. slope.

47.80 Long spur, slopes E.; desc. 400 ft., over N. slope.

64.67 Wash, 30 lks. wide, course S. 82° E.; asc. 205 ft. over SW. slope to

80.00 Set an iron post, 3 ft. long, 2 ins. diam., 27 ins. in the ground, with a stone marked with a cross (X) deposited at base, for cor. of secs. 21, 22, 27 and 28, with brass cap marked

T9S . R1W
S21 | S22
S28 | S27

1938

No bearing trees available.

Raise a mound of stone, 3 ft. base, 2 ft. high, W. of cor.

Land, mountainous.
Soil, rocky, 4th rate.
Timber, paloverde.
Undergrowth, cacti.

S. 89° 58' E., on random line, bet. secs. 22 and 27.

40.00 Set temp. $\frac{1}{4}$ sec. cor.

80.12 Intersect N. and S. line, 8 lks. S. of the cor. of secs. 22, 23, 26 and 27.

Thence

S. 89° 59' W., on true line, bet. secs. 22 and 27.

Over nearly level land, thru scattering timber and undergrowth.

2.56 Enter gently rolling land. Asc. 25 ft. over E. slope to

8.00 Enter mountainous land. Asc. 185 ft. over E. slope.

22.28 Point of spur, slopes SE.; asc. 270 ft. over broken S. and SE. slopes to

40.06 Set an iron post, 3 ft. long, 1 in. diam., 6 ins. in the ground to bedrock, with a stone marked with a cross (X) deposited at base, and in a mound of stone to top, for $\frac{1}{4}$ sec. cor., with brass cap marked

$\frac{1}{4}$ S 22
S 27

1938

No bearing trees available.

36

Chains	Ascend 86 ft. over broken SE. slope.
45.37	Spur, slopes SE.; desc. 213 ft. over SW. slope.
59.62	Head of draw, course SE.; asc. 124 ft. over E. slope.
71.22	Spur, slopes SE.; desc. 204 ft. over SW. slope to
80.12	The cor. of secs. 21, 22, 27 and 28.
	Land, mountainous, except 8 chs. at E. end of line which is nearly level and gently rolling.
	Soil, rocky, 4th rate.
	Timber, paloverde.
	Undergrowth, cacti.
	N. 0° 02' W., bet. secs. 21 and 22.
	Over mountainous land, thru scattering timber and undergrowth. Ascend 404 ft. over SW. slope.
18.80	Ridge, bears N. 75° W. and S. 75° E.; desc. 380 ft. over steep N. slope to
29.30	Desc. 131 ft. over NE. slope to
40.00	Set an iron post, 3 ft. long, 1 in. diam., 18 ins. in the ground to bedrock, with a stone marked with a cross (X) deposited at base, and in a mound of stone to top, for $\frac{1}{4}$ sec. cor., with brass cap marked
	$\frac{1}{4}$
	S21 S22
	1938
	No bearing trees available.
	Thence over rolling land; desc. 159 ft. over NE. slope to
65.48	Cut wash, 10 lks. wide, course NE.; thence over gently rolling and nearly level land.
70.68	Cut wash, course E.
77.28	Cut wash, course S. 70° E.
80.00	Set an iron post, 3 ft. long, 2 ins. diam., 27 ins. in the ground, for cor. of secs. 15, 16, 21 and 22, with brass cap marked
	T9S . R1W
	S16 S15
	S21 S22
	1938
	No bearing trees available.
	Raise a mound of stone, 3 ft. base, 2 ft. high, W. of cor.
	Land, S $\frac{1}{2}$ mountainous, N $\frac{1}{2}$ rolling, and nearly level.
	Soil, rocky, 4th rate.
	Timber, paloverde.
	Undergrowth, cacti and greasewood.

Chains	N. 89° 59' E., on random line, bet. secs. 15 and 22.
40.00	Set temp. $\frac{1}{4}$ sec. cor.
80.00	Intersect N. and S. line, 19 lks. N. of the cor. of secs. 14, 15, 22 and 23.
	Thence
	N. 89° 53' W., on true line, bet. secs. 15 and 22.
	Over rolling land; thru scattering timber and undergrowth. Ascend 40 ft. over E. slope.
5.00	Point of spur, slopes SE.; asc. gradually over S. slope.
14.65	Asc. 20 ft. over E. slope.
19.60	Low ridge, bears NW. and SE.; desc. 54 ft. over SW. slope to
29.12	Foot of slope, bears NW. and SE. Thence over nearly level land.
40.00	Set an iron post, 3 ft. long, 1 in. diam., 28 ins. in the ground, for $\frac{1}{4}$ sec. cor., with brass cap marked
	$\frac{1}{4} \frac{S \ 15}{S \ 22}$
	1938
	No bearing trees available.
	Raise a mound of stone, 3 ft. base, 2 ft. high, N. of cor.
	Continue over nearly level land; thru dense undergrowth.
56.90	Ungraded road, bears N. 18° W. and SE.
58.00	Same road, bears NE. and SW.
60.00	Same road; bears NW. and S. 10° E.
80.00	The cor. of secs. 15, 16, 21 and 22.
	Land, rolling and nearly level. Soil, gravelly and rocky, 3rd and 4th rates. Timber, paloverde and ironwood. Undergrowth, greasewood, sagebrush and cacti.
	N. 0° 02' W., bet. secs. 15 and 16.
	Over nearly level land, thru scattering timber and undergrowth.
6.00	Ungraded road, bears NW. and SE.
34.00	Enter gently rolling land. Asc. 12 ft. over SW. slope.
37.20	Low spur, slopes SE.; desc. 25 ft. over NE. slope.
40.00	Wash, 20 lks. wide, course SE. Set an iron post, 3 ft. long, 1 in. diam., 4 ins. in the ground to bedrock over a cross (X) marked thereon, and in a mound of stone to top, for $\frac{1}{4}$ sec. cor., with brass cap marked

38

Chains	<p style="text-align: center;">4</p> <p style="text-align: center;">S16 S15</p> <p style="text-align: center;">1938</p> <p style="text-align: center;">No bearing trees available.</p> <p>Thence over gently rolling and nearly level land.</p> <p>70.30 Wash, 20 lks. wide, course NE.</p> <p>79.00 Wash, 25 lks. wide, course NE.; asc. slightly over SE. slope to</p> <p>80.00 Set an iron post, 3 ft. long, 2 ins. diam., 18 ins. in the ground to bedrock, with a stone marked with a cross (X) deposited at base and in a mound of stone to top, for cor. of secs. 9, 10, 15 and 16, with brass cap marked</p> <div style="text-align: center;"> <table border="1"> <tr> <td>T9S</td><td>R1W</td></tr> <tr> <td>S9</td><td>S10</td></tr> <tr> <td>S16</td><td>S15</td></tr> </table> </div> <p style="text-align: center;">1938</p> <p style="text-align: center;">No bearing trees available.</p> <p>Land, nearly level and gently rolling. Soil, gravelly and rocky, 3rd and 4th rates. Timber, paloverde, ironwood and mesquite. Undergrowth, greasewood, sagebrush and cacti.</p> <hr/> <p>S. 89° 53' E., on random line, bet. secs. 10 and 15.</p> <p>40.00 Set temp. $\frac{1}{4}$ sec. cor.</p> <p>80.00 Intersect the cor. of secs. 10, 11, 14 and 15.</p> <p>Thence</p> <p>N. 89° 53' W., on true line, bet. secs. 10 and 15.</p> <p>Over mountainous land, thru scattering timber and undergrowth. Desc. 14 ft. over SW. slope.</p> <p>0.80 Wash, 15 lks. wide, course S.; asc. 74 ft. over E. slope.</p> <p>5.50 Spur, slopes SE.; desc. 108 ft. over SW. slope.</p> <p>10.30 Ravine, course SE.; asc. 34 ft. over NE. slope.</p> <p>15.00 Spur, slopes N.; thence across top of spur.</p> <p>17.40 Leave top of spur. Enter rolling land; desc. 15 ft. over W. slope.</p> <p>20.00 Asc. 18 ft. over E. slope.</p> <p>25.00 Low spur, slopes N.; desc. 57 ft. over W. slope to</p> <p>30.00 Thence over nearly level land.</p> <p>40.00 Set an iron post, 3 ft. long, 1 in. diam., 10 ins. in the ground to bedrock, with a stone marked with a cross (X) deposited at base and in a mound of stone to top, for $\frac{1}{4}$ sec. cor., with brass cap marked</p>	T9S	R1W	S9	S10	S16	S15
T9S	R1W						
S9	S10						
S16	S15						

Survey; Subdivision of T. 9 S., R. 1 W.

BOOK 4230

39

Chains

$$\frac{S 10}{S 15}$$

1938

No bearing trees available.

- 45.40 Draw, course NE. Enter rolling and mountainous land; asc. 154 ft. over NE. slope.
- 60.20 Spur, slopes SE.; desc. 132 ft. over W. slope to
- 72.30 Foot of slope, bears N. and S. Enter gently rolling land; desc. gradually over W. slope.
- 78.50 Wash, 25 lks. wide, course S.; asc. slightly over SE. slope to
- 80.00 The cor. of secs. 9, 10, 15 and 16..
- Land, mountainous, rolling and nearly level.
Soil, gravelly and rocky, 3rd and 4th rates.
Timber, paloverde, ironwood and mesquite.
Undergrowth, greasewood, sagebrush and cacti..

N. 0° 02' W., bet. secs. 9 and 10.

- Over gently rolling land, thru scattering timber and undergrowth. Ascend 14 ft. over SE. slope to
- 1.80 Asc. gradually over E. slope.
- 21.49 Asc. 57 ft. over SE. slope.
- 28.54 Spur, slopes E.; desc. 52 ft. over NE. slope.
- 34.00 Trail, bears NE. and SW.
- 39.70 Wash, 30 lks. wide, course NE. from W.; asc. slightly over S. slope to
- 40.00 Set an iron post, 3 ft. long, 1 in. diam., 14 ins. in the ground to bedrock with a stone marked with a cross (X) deposited at base, and in a mound of stone to top, for $\frac{1}{4}$ sec. cor., with brass cap marked

 $\frac{1}{4}$

S9 | S10

1938

No bearing trees available.

- Asc. gradually over S. and SW. slopes to
- 47.50 Enter heavily rolling and mountainous land; asc. 266 ft. over SW. slope.
- 65.80 Ridge, bears NW. and SE.; desc. 285 ft. over NE. slope.
- 75.00 Wash, 20 lks. wide, course E. Enter gently rolling land; asc. 15 ft. over SW. slope to
- 80.00 Set an iron post, 3 ft. long, 2 ins. diam., 14 ins. in the ground to bedrock, with a stone marked with a cross (X) deposited at base, and in a mound of stone to top, for the cor. of secs. 3, 4, 9 and 10, with brass cap marked

Survey: Subdivision of T. 9 S., R. 1 W.

40

Chains	<div>T9S R1W S4 S3 S9 S10</div> <div>1938</div> <div>No bearing trees available.</div> <div>Land, gently and heavily rolling, and mountainous. Soil, Rocky, 3rd and 4th rates. Timber, paloverde, ironwood and mesquite. Undergrowth, greasewood, sagebrush and cacti.</div>
40.00	S. 89° 53' E., on random line, bet. secs. 3 and 10. Set temp. ¼ sec. cor.
80.06	Intersect N. and S. line, 5 lks. N. of the cor. of secs. 2, 3, 10 and 11. Thence N. 89° 51' W., on true line, bet. secs. 3 and 10. Over heavily rolling and mountainous land, thru scattering timber and undergrowth. Asc. gradually over N. slope.
5.00	Wash, 5 lks. wide, course NE.; asc. 140 ft. over E. slope.
13.53	Spur, slopes NE.; desc. 91 ft. over NW. slope.
20.80	Ravine, course NE.; asc. 40 ft. over E. slope.
24.75	Spur, slopes NE.; desc. 25 ft. over NW. slope.
31.00	Draw, course NE. near head; asc. 184 ft. over E. slope.
39.70	Spur, slopes S.; desc. slightly over SW. slope to
40.03	Set an iron post, 3 ft. long, 1 in. diam., on exposed bedrock, over a cross (X) marked thereon and in a mound of stone to top, for ¼ sec. cor., with brass cap marked <div>¼ S 3 S 10</div> <div>1938</div> <div>No bearing trees available.</div> <div>Desc. 80 ft. over steep SW. slope to</div>
44.85	Foot of steep slope bears NW. and SE. Enter gently rolling land; desc. 44 ft. over SW. slope.
57.00	Wash, 20 lks. wide, course SE.; asc. gradually over SE. slope.
62.72	Desc. 35 ft. over S. and SW. slopes to
80.06	The cor. of secs. 3, 4, 9 and 10. Land, heavily and gently rolling and mountainous. Soil, rocky, 3rd and 4th rates. Timber, paloverde and ironwood. Undergrowth, greasewood, sagebrush and cacti.

Survey: Subdivision of T. 9 S., R. 1 W.

BOOK 425

Chains	N. 0° 02' W., on random line, bet. secs. 3 and 4.
40.00	Set temp. $\frac{1}{4}$ sec. cor.
80.15	Intersect N. bdy. of Tp., 26 lks. W. of the true point for cor. of secs. 3, 4, 33 and 34, witnessed 30 lks. W. as hereinbefore described.
	Thence, from point for sec. cor.,
	S. 0° 09' W., on true line, bet. secs. 3 and 4.
	Over mountainous land, thru scattering timber and undergrowth.. Asc. 16 ft. over NE. slope.
1.15	Spur, slopes E.; desc. 175 ft. over S. slope.
5.55	Ravine, course SE.; asc. 192 ft. over NE. slope.
15.15	Spur, slopes SE.; thence across top of spur.
16.35	Leave top of spur, desc. 265 ft. over steep S. slope.
26.15	Trail, bears N. 70° E. and S. 70° W.
30.65	Wash, 150 lks. wide, course NE.; asc. 124 ft. over N. slope to
40.15	Set an iron post, 3 ft. long, 1 in. diam., 16 ins. in the ground to bedrock, with a stone marked with a cross (X) deposited at base, and in a mound of stone to top, for $\frac{1}{4}$ sec. cor., with brass cap marked
 $\frac{1}{4}$
 S4 . S3
 1938
 No bearing trees available.
	Asc. 149 ft. over N. slope.
45.15	Spur, slopes E.; desc. 100 ft. over SE. slope.
51.55	Ravine, course SE.; asc. 204 ft. over NE. slope.
61.61	Spur, slopes E.; thence across top of spur.
62.15	Perpendicular cliff, 60 ft. high, bears E. and W., facing S. Leave top of spur; desc. 270 ft. over steep SW. slope to
74.18	Foot of steep slope. Enter gently rolling land; desc. 34 ft. over SW. slope to
80.15	The cor. of secs. 3, 4, 9 and 10.
	Land, mountainous.
	Soil, rocky, 4th rate.
	Timber, paloverde, ironwood and mesquite.
	Undergrowth, greasewood, sagebrush and cacti.
	The standard cor. of secs. 32 and 33, on the S. bdy. of the Tp. (2nd Std. Par. S.) reestablished in 1924, is an iron post, 2 ins. diam., projecting 36 ins. above ground, firmly set in a mound of stone to top, and properly marked on brass cap.

Survey: Subdivision of T. 9 S., R. 1 W.

42

Chains

Thence,
N. 0° 02' W., bet. secs. 32 and 33.
Over mountainous land, thru scattering timber and undergrowth. Desc. 117 ft. over NE. slope.
6.82 Head of draw, course N. 30°E.; asc. 97 ft. over SE. slope.
15.51 Thence over E. slope. Desc. 45 ft.
19.04 Asc. 46 ft. over SE. and S. slopes.
29.00 Spur, slopes E.; desc. 161 ft. over N. slope.
39.60 Bottom of ravine, 20 lks. wide, course E.; asc. 10 ft. over S. slope to
40.00 Set an iron post, 3 ft. long, 1 in. diam., 12 ins. in the ground to bedrock, with a stone marked with a cross (X) deposited at base, and in a mound of stone to top, for $\frac{1}{4}$ sec. cor., with brass cap marked
 $\frac{1}{4}$
S32 | S33
1938
No bearing trees available.
Ascend 152 ft. over S. slope.
46.00 Spur, slopes S. 70°E.; desc. 89 ft. over N. and NE. slopes.
62.34 Head of draw, course E.; asc. 35 ft. over S. slope.
66.14 Spur, slopes E.; desc. 135 ft. over N. slope.
73.28 Bottom of ravine, course N. 70°E.; asc. 179 ft. over S. slope to
80.00 Set an iron post, 3 ft. long, 2 ins. diam., 16 ins. in the ground to bedrock, with a stone marked with a cross (X) deposited at base, and in a mound of stone to top, for cor. of secs. 28, 29, 32 and 33, with brass cap marked
T9S R1W
S29 | S28
S32 | S33
1938
No bearing trees available.
Land, mountainous.
Soil, rocky, 4th rate.
Timber, paloverde.
Undergrowth, cacti.
East, on random line, bet. secs. 28 and 33.
40.00 Set temp. $\frac{1}{4}$ sec. cor.
79.94 Intersect N. and S. line 5 lks. N. of the cor. of secs. 27, 28, 33 and 34.
Thence

Chains	N.89° 58' W., on true line, bet. secs. 28 and 33. Over mountainous and heavily rolling land, thru scattering timber and undergrowth. Desc. 86 ft. over SW. slope.
3.84	Draw, course S. 10°E.; asc. 182 ft. over E. slope.
17.84	Spur, slopes S.; desc. 126 ft. over W. slope.
22.64	Deep draw, course S.; asc. 134 ft. over SE. slope.
34.10	Spur, slopes S. 20°W.; desc. 70 ft. over W. slope to
39.97	Set an iron post, 3 ft. long, 1 in. diam., on exposed bedrock, over a cross (X) marked thereon and in a mound of stone to top, for $\frac{1}{4}$ sec. cor., with brass cap marked
	$\frac{1}{4} \frac{S \ 28}{S \ 33}$ 1938
	No bearing trees available.
	Desc. 26 ft. over W. slope.
41.54	Draw, course S.; asc. 127 ft. over E. slope.
49.84	Spur, slopes S. 20°W., desc. 202 ft. over W. slope.
58.93	Bottom of ravine, course S. 20° W.; asc. 99 ft. over SE. slope.
62.66	Point of spur, slopes S.; desc. 30 ft. over SW. slope.
71.16	Draw, course S.; asc. 144 ft. over SE. slope.
77.76	Point of spur, slopes S.; desc. 13 ft. over S. slope to
79.94	The cor. of secs. 28, 29, 32 and 33. Land, mountainous and heavily rolling. Soil, rocky, 4th rate. Timber, paloverde. Undergrowth, cacti.
	N. 0° 02' W., bet. secs. 28 and 29. Over heavily rolling and mountainous land, thru scattering timber and undergrowth. Asc. 94 ft. over broken S. slope.
10.70	Spur, slopes S. 40°W.; desc. 122 ft. over NW. slope.
25.62	Bottom of ravine, 10 lks. wide, course S. 30°W.; asc. 145 ft. over SE. slope to
33.30	Asc. 77 ft. over S. slope to
40.00	Set an iron post, 3 ft. long, 1 in. diam., 12 ins. in the ground to bedrock, with a stone marked with a cross (X) deposited at base, and in a mound of stone to top, for $\frac{1}{4}$ sec. cor., with brass cap marked
	$\frac{1}{4}$ S29 S28 1938

Survey: Subdivision of T. 9 S., R. 1 W.

44

Chains	<p>No bearing trees available.</p> <p>Asc. 100 ft. over S. slope.</p> <p>56.50 Spur, slopes SE.; desc. 159 ft. over NE. slope.</p> <p>73.97 Bottom of ravine, course S. 60°E.; asc. 85 ft. over S. slope to</p> <p>80.00 Set an iron post, 3 ft. long, 2 ins. diam., 6 ins. in the ground to bedrock, with a stone marked with a cross (X) deposited at base, and in a mound of stone to top, for cor. of secs. 20, 21, 28 and 29, with brass cap marked</p> <div> <div>T9S</div> <div>S20</div> <div>S29</div> <div>R1W</div> <div>S21</div> <div>S28</div> </div> <p>1938</p> <p>No bearing trees available.</p> <p>Land, heavily rolling and mountainous. Soil, rocky, 4th rate. Timber, paloverde and ironwood. Undergrowth, cacti, sagebrush and greasewood.</p>
40.00	<p>S. 89° 58' E., on random line, bet. secs. 21 and 28.</p> <p>Set temp. $\frac{1}{4}$ sec. cor.</p> <p>79.90 Intersect N. and S. line, 4 lks. S. of the cor. of secs. 21, 22, 27 and 28.</p> <p>Thence</p> <p>West, on true line, bet. secs. 21 and 28.</p> <p>Over mountainous and heavily rolling land, thru scattering timber and undergrowth. Desc. 55 ft. over SW. slope.</p> <p>2.60 Bottom of ravine, course S.; asc. 91 ft. over E. slope.</p> <p>7.40 Point of spur, slopes SE.; desc. 205 ft. over SW. slope.</p> <p>24.20 Draw, 20 lks. wide, course S. 55°E.; asc. 23 ft. over NE. slope to</p> <p>29.70 Draw, course N. 10°E.; asc. 88 ft. over NE. slope to</p> <p>39.95 Set an iron post, 3 ft. long, 1 in. diam., on exposed bedrock, over a cross (X) marked thereon and in a mound of stone to top, for $\frac{1}{4}$ sec. cor., with brass cap marked</p> <div> <div>$\frac{1}{4}$</div> <div>S 21</div> <div>S 28</div> </div> <p>1938</p> <p>No bearing trees available.</p> <p>Ascend 165 ft. over NE. slope.</p> <p>49.20 Spur, slopes S. 60°E.; asc. 124 ft. over S. and SE. slopes.</p> <p>60.70 Ridge, bears N. and S.; desc. 92 ft. over SW. slope.</p> <p>72.20 Draw, course S. 30°E.; asc. 63 ft. over SE. slope to</p>

Chains	
79.90	<p>The cor. of secs. 20, 21, 28 and 29.</p> <p>Land, mountainous and heavily rolling. Soil, rocky, 4th rate. Timber, paloverde. Undergrowth, cacti.</p>
	<p>N. 0° 02' W., bet. secs. 20 and 21.</p> <p>Over heavily rolling and mountainous land, thru scattering timber and undergrowth. Ascend 104 ft. over S. slope.</p>
9.66	Point of spur, slopes E.; desc. 71 ft. over NE. slope.
16.66	Head of draw, course S. 15° E.; asc. 57 ft. over SW. slope.
19.10	Ridge, bears S. 60° E. and N. 30° W.; desc. 184 ft. over NE. slope to
24.30	Desc. 142 ft. over N. slope.
34.40	Draw, course S. 70° E.; asc. 36 ft. over S. slope.
36.74	Low spur, slopes E.; desc. 34 ft. over N. slope.
39.20	Draw, course E.; asc. 6 ft. over S. slope to
40.00	<p>Set an iron post, 3 ft. long, 1 in. diam., 8 ins. in the ground to bedrock, with a stone marked with a cross (X) deposited at base, and in a mound of stone to top, for ¼ sec. cor., with brass cap marked</p> <p>¼</p> <p>S20 S21</p> <p>1938</p> <p>No bearing trees available.</p> <p>Ascend 43 ft. over S. slope.</p>
43.74	Spur, slopes E.; desc. 55 ft. over N. slope.
52.90	Draw, course S. 70° E.; asc. 102 ft. over S. slope.
64.30	Ridge, bears E. and W.; desc. 129 ft. over N. slope.
71.70	Draw, course N. 60° E.; asc. 102 ft. over SE. slope to
80.00	<p>Set an iron post, 3 ft. long, 2 ins. diam., 28 ins. in the ground, for cor. of secs. 16, 17, 20 and 21, with brass cap marked</p> <p>T9S R1W S17 S16 S20 S21</p> <p>1938</p> <p>No bearing trees available.</p> <p>Raise a mound of stone, 3 ft. base, 1½ ft. high, W. of cor.</p> <p>Land, heavily rolling and mountainous. Soil, rocky, 4th rate. Timber, paloverde. Undergrowth, sagebrush and cacti.</p>

Survey: Subdivision of T. 9 S., R. 1 W.

46

Chains	East, on random line, bet. secs. 16 and 21.
40.00	Set temp. $\frac{1}{4}$ sec. cor.
79.88	Intersect N. and S. line, 14 lks. S. of the cor. of secs. 15, 16, 21 and 22.
	Thence
	S. $89^{\circ} 54'$ W.; on true line, bet. secs. 16 and 21.
	Over nearly level land, thru scattering timber and undergrowth.
4.30	Wash, 10 lks. wide, course SE.
32.00	Enter rolling land; asc. 57 ft. over E. slope to
39.94	Set an iron post, 3 ft. long, 1 in. diam., 14 ins. in the ground to bedrock, with a stone marked with a cross (X) deposited at base, and in a mound of stone to top, for $\frac{1}{4}$ sec. cor., with brass cap marked
	$\frac{1}{4} \frac{S 16}{S 21}$
	1938
	No bearing trees available.
	Ascend 13 ft. over E. slope.
41.00	Spur, slopes SE.; desc. 50 ft. over SW. slope.
46.55	Wash, 10 lks. wide, course S. 10° E. Thence over nearly level land.
64.44	Enter rolling land; asc. 35 ft. over E. slope.
70.82	Spur, slopes SE. Enter mountainous land; asc. 48 ft. over S. slope to
79.88	The cor. of secs. 16, 17, 20 and 21.
	Land, nearly level; rolling and mountainous.
	Soil, gravelly and rocky, 3rd and 4th rates.
	Timber, paloverde, mesquite and ironwood.
	Undergrowth, greasewood, catclaw and cacti.
	N. $0^{\circ} 02'$ W.; bet. secs. 16 and 17.
	Over mountainous land, thru scattering timber and undergrowth. Ascend 111 ft. over S. slope.
6.40	Spur, slopes SE.; desc. 148 ft. over NE. slope.
15.90	Wash, 10 lks. wide, in bottom of ravine, course E.; asc. 165 ft. over S. slope.
22.41	Spur, slopes S. 60° E.; desc. 183 ft. over NE. slope.
38.47	Bottom of ravine; course E.; heads 10 chs. W.; asc. 20 ft. over S. slope to
40.00	Set an iron post, 3 ft. long, 1 in. diam., 28 ins. in the ground, for $\frac{1}{4}$ sec. cor., with brass cap marked

Chains

sl7 | sl6

1938

No bearing trees available.

Raise a mound of stone, 3 ft. base, 2 ft. high, W. of cor.

Ascend 30 ft. over S. slope.

41.11 Spur, slopes E.; desc. 64 ft. over N. slope.

47.55 Wash, 12 lks. wide, course S. 80° E. Enter rolling land; asc. 25 ft. over S. slope.

54.55 Low spur, slopes E.; desc. 10 ft. over N. slope.

56.45 Wash, 5 lks. wide, course E. Enter heavily rolling and mountainous land. Asc. 75 ft. over S. slope.

63.86 Spur, slopes S. 80° E.; desc. 80 ft. over NE. slope.

69.20 Wash, 10 lks. wide, course S. 80° E.; asc. 57 ft. over SW. slope to

80.00 Set an iron post, 3 ft. long, 2 ins. diam., 24 ins. in the ground to bedrock, and in a mound of stone to top, for cor. of secs. 8, 9, 16 and 17, with brass cap marked

T9S R1W
S8 | S9
sl7 | sl6

1938

No bearing trees available.

Raise a mound of stone, 3 ft. base, 1½ ft. high, W. of cor.

Land, mountainous and rolling.
Soil, gravelly and rocky, 3rd and 4th rates.
Timber, paloverde, mesquite and ironwood.
Undergrowth, greasewood, catclaw, thornbrush and caoti.

N. 89° 54' E., on random line, bet. secs. 9 and 16.

40.00 Set temp. ¼ sec. cor.

79.80 Intersect N. and S. line, 3 lks. S. of the cor. of secs. 9, 10, 15 and 16.

Thence,

S. 89° 53' W., on true line, bet. secs. 9 and 16.

Over gently rolling and nearly level land, thru scattering timber and undergrowth. Asc. gradually over SE. slope.

8.80 Wash, 10 lks. wide, course SE.

20.00 Thence over gradual S. slope.

Chains

39.90 Set an iron post, 3 ft. long, 1 in. diam., 28 ins. in the ground, for $\frac{1}{4}$ sec. cor., with brass cap marked

$$\frac{1}{4} \frac{S 9}{S 16}$$

1938

No bearing trees available.

Raise a mound of stone, 3 ft. base, $1\frac{1}{2}$ ft. high, N. of cor.

Continue over gently rolling and nearly level land.

44.90 Wash, 15 lks. wide, course SW. from N.

55.10 Wash, 15 lks. wide, course S. for 6.00 chs., thence S. 80° E. Asc. 49 ft. over E. slope.

62.85 Spur, slopes SE., desc. 20 ft. over SW. slope.

68.95 Wash, 8 lks. wide, course SE. Enter heavily rolling and mountainous land. Asc. 70 ft. over NE. slope.

78.50 Spur, slopes SE.; asc. 12 ft. over S. slope to

79.80 The cor. of secs. 8, 9, 16 and 17.

Land, gently and heavily rolling, nearly level and mountainous.

Soil, rocky, 3rd and 4th rates.

Timber, paloverde, ironwood and mesquite.

Undergrowth, greasewood, catclaw and cacti.

N. $0^{\circ} 02'$ W., bet. secs. 8 and 9.

Over mountainous land, thru scattering timber and undergrowth; Asc. 10 ft. over S. slope.

0.58 Spur, slopes S. 80° E. from N. 15° W.; desc. 28 ft. over NE. slope.

3.60 Drain, course SE., from N. 5° W.; near head. Asc. 383 ft. over steep, rocky S. slope.

18.40 Foot of perpendicular cliff, 75 ft. high, facing S. It being impracticable to continue chaining on sec. line owing to cliff, obtain measurement by offset line from 18.40 ch. station as follows: East, 1.04 chs.; thence N. $0^{\circ} 02'$ W., 4.78 chs.; thence West, 1.04 chs. returning to point on sec. line at 23.18 ch. station thereon.

18.99 High, rocky spur, slopes E.; desc. 385 ft. over steep NE. slope to bottom of gulch.

23.18 Offset point.

Thence, N. $0^{\circ} 02'$ W., on sec. line, continuing measurement.

36.20 Wash, 15 lks. wide, in bottom of gulch, course E.; asc. 60 ft. over S. slope to

40.00 Set an iron post, 3 ft. long, 1 in. diam., 27 ins. in the ground, for $\frac{1}{4}$ sec. cor., with brass cap marked

Chains	<div><div><div><div><div></div><div>1/4</div><div></div></div><div><div>s8</div><div> </div><div>s9</div></div><div>1938</div></div><div>No bearing trees available.</div><div>Raise a mound of stone, 3 ft. base, 1 1/2 ft. high, W. of cor.</div><div>Asc. 190 ft. over steep S. slope.</div><div>46.81Top of butte, on spur, sloping E.; thence along broken E. slope, across head of ravine, course E.</div><div>54.10Head of spur, sloping E.; desc. 93 ft. over NE. slope.</div><div>57.80Bottom of ravine, course NE., heads 5 chs. SW.; asc. 9 ft. over SE. slope.</div><div>59.96Desc. gradually over E. slope to</div><div>62.00Descend 123 ft. over broken NE. slope.</div><div>76.00Wash, 30 lks. wide, in bottom of gulch, course E.; asc. 25 ft. over S. slope to</div><div>80.00Set an iron post, 3 ft. long, 2 ins. diam., 28 ins. in the ground, for cor. of secs. 4, 5, 8 and 9, with brass cap marked</div><div><div><div>T9S</div><div>S5</div><div>S8</div></div><div><div>R1W</div><div>S4</div><div>S9</div></div></div><div>1938</div><div>No bearing trees available.</div><div>Raise a mound of stone, 3 ft. base, 2 ft. high, W. of cor.</div><div>Land, mountainous.</div><div>Soil, rocky, 4th rate.</div><div>Timber, paloverde, ironwood and mesquite.</div><div>Undergrowth, sagebrush and cacti.</div></div></div>
	<div>N. 89° 53' E., on random line, bet. secs. 4 and 9.</div> <div>40.00Set temp. 1/4 sec. cor.</div> <div>79.82Intersect N. and S. line, 2 lks. N. of the cor. of secs. 3, 4, 9 and 10.</div> <div>Thence</div> <div>S. 89° 54' W., on true line, bet. secs. 4 and 9.</div> <div>Over gently rolling land, thru scattering timber and undergrowth. Desc. slightly over SW. slope.</div> <div>0.30Wash, 6 lks. wide, course S. Asc. gradually over SE. and S. slopes.</div> <div>35.62Cut wash, 8 lks. wide, course S. for 5.00 chs., thence E.</div> <div>39.91Set an iron post, 3 ft. long, 1 in. diam., 27 ins. in the ground, for 1/4 sec. cor., with brass cap marked</div>

Survey: Subdivision of T. 9 S., R. 1 W.

50

Chains

$$\frac{1}{4} \frac{S 4}{S 9}$$

1938

No bearing trees available.

Raise a mound of stone, 3 ft. base, 1½ ft. high,
N. of cor.

Desc. 10 ft. over SW. slope.

45.72 Wash, 15 lks. wide, course SE. Asc. 60 ft. over gradual
NE. slope.59.85 Enter heavily rolling and mountainous land. Asc. 80 ft.
over NE. slope.

67.27 Spur, slopes S. 65° E.; desc. 53 ft. over SW. slope.

73.02 Bottom of ravine, course SE.; asc. 27 ft. over SE. slope.

75.80 Asc. slightly over S. slope to

79.82 The cor. of secs. 4, 5, 8 and 9.

Land, gently and heavily rolling and mountainous.
Soil, rocky, 3rd and 4th rates.
Timber, paloverde, ironwood and mesquite.
Undergrowth, greasewood, catclaw and cacti.

N. 0° 02' W., on random line, bet. secs. 4 and 5.

40.00 Set temp. ¼ sec. cor.

80.26 Intersect N. bdy. of Tp., 11 lks. W. of the cor. of secs.
4, 5, 32 and 33, hereinbefore described.

Thence

S. 0° 03' W., on true line, bet. secs. 4 and 5.

Over mountainous land, thru scattering timber and under-
growth. Asc. 80 ft. over N. slope.

5.42 Low spur, slopes N. 15° E.; asc. 37 ft. over E. slope.

15.76 Head of ravine, course NE.; asc. 135 ft. over NW. slope.

21.14 Ridge, bears E. and W.; desc. 520 ft. over steep, broken,
rocky S. slope to40.26 Set an iron post, 3 ft. long, 1 in. diam., 12 ins. in the
ground to bedrock, with a stone marked with a cross (X)
deposited at base and in a mound of stone to top, for
¼ sec. cor., with brass cap marked

¼

S5 | S4

1938

No bearing trees available.

Desc. 129 ft. over SE. slope.

55.31 Wash, 12 lks. wide, in bottom of rocky gulch, course E.;
asc. 255 ft. over steep NE. slope.

Chains	
63.19	Spur, slopes E.; desc. 95 ft. over SE. slope.
71.76	Head of short spur, slopes SW.; desc. 163 ft. over S. slope to
80.26	The cor. of secs. 4, 5, 8 and 9.
	Land, mountainous. Soil, rocky, 3rd and 4th rates. Timber, paloverde and mesquite. Undergrowth, greasewood, catclaw and cacti.
	The standard cor. of secs. 31 and 32, on the S. bdy..of the Tp. (2nd Std. Par. S.) is an iron post, 2 ins. in diam., projecting 12 ins. above ground, firmly set, properly marked on brass cap and witnessed by a mound of stone N..
	Thence
	N. 0° 03' W., bet. secs. 31 and 32.
	Over gently rolling land, in basin, thru scattering timber and dense undergrowth. Asc. 87 ft. over W. slope.
27.25	Desc. 10 ft. over NW. slope.
34.96	Draw, course S. 30° W. Leave basin. Enter heavily rolling and mountainous land; undergrowth becomes scattering. Asc. 80 ft. over SW. slope to
40.00	Set an iron post, 3 ft. long, 1 in. diam., 12 ins. in the ground to bedrock, with a stone marked with a cross (X) deposited at base, and in a mound of stone to top, for $\frac{1}{4}$ sec. cor., with brass cap marked
	$\frac{1}{4}$ S31 S32 1938 No bearing trees available. Asc. 336 ft. over SW. slope to
56.00	Rim, bears NW. and SE. Leave mountainous and enter gently rolling land; asc. 70 ft. over SE. slope to
80.00	Set an iron post, 3 ft. long, 2 ins. diam., 6 ins. in the ground to bedrock, with a stone marked with a cross (X) deposited at base, and in a mound of stone to top, for cor. of secs. 29, 30, 31 and 32, with brass cap marked
	T9S R1W S30 S29 S31 S32 1938 No bearing trees available. Land, gently and heavily rolling and mountainous. Soil, rocky, 4th rate. Timber, paloverde. Undergrowth, greasewood and cacti.

Chains	
	East, on random line, bet. secs. 29 and 32.
40.00	Set temp. $\frac{1}{4}$ sec. cor.
80.08	Intersect N. and S. line, 12 lks. N. of the cor. of secs. 28, 29, 32 and 33.
	Thence
	N. $89^{\circ} 55'$ W., on true line, bet. secs. 29 and 32.
	Over heavily rolling and mountainous land, thru scattering timber and undergrowth. Asc. 20 ft. over S. slope.
3.47	Desc. 161 ft. over SW. slope. .
15.28	Draw, course SE.; asc. 277 ft. over NE. slope to
30.08	E. edge of spur, bears NW. and SE.. Enter gently rolling land on top of broad spur sloping SE. Asc. 18 ft. to $\frac{1}{4}$ sec. cor.
39.23	Dim trail, bears S. 50° W. and N. 10° W.
40.04	Set an iron post, 3 ft. long, 1 in. diam., 12 ins. in the ground to bedrock, with a stone marked with a cross (X) deposited at base, and in a mound of stone to top, for $\frac{1}{4}$ sec. cor., with brass cap marked
	$\frac{1}{4} \frac{S.29}{S.32}$
	1938
	No bearing trees available.
	Continue across gently rolling top of spur. Desc. 14 ft. to
43.37	W. edge of spur, bears NW. and S. Leave top of spur and enter heavily rolling land; desc. 157 ft. over W. slope.
60.76	Draw, course S. Enter gently rolling land; asc. 80 ft. over SE. slope to
80.08	The cor. of secs. 29, 30, 31 and 32.
	Land, heavily and gently rolling, and mountainous.
	Soil, rocky, 4th rate.
	Timber, paloverde and ironwood.
	Undergrowth, cacti.
	West, on random line, bet. secs. 30 and 31.
40.00	Set temp. $\frac{1}{4}$ sec. cor.
79.93	Intersect W. bdy. of Tp., 3 lks. S. of the cor. of secs. 25, 30, 31 and 36, hereinbefore described.
	Thence
	S. $89^{\circ} 59'$ E., on true line, bet. secs. 30 and 31.
	Over mountainous land, thru scattering timber and undergrowth. Asc. 16 ft. over N. slope.
1.00	Desc. 34 ft. over NE. slope.
3.03	Saddle bet. slopes from a hill about 6 chs. S. and SW.,

Survey: Subdivision of T. 9 S., R. 1 W.

BOOK 4230

53

Chains	end of ridge about 5 chs. NE.; asc. 218 ft. over SW. slope.
20.27	Spur, slopes S.; desc. 134 ft. over SE. slope.
26.30	Bottom of ravine, course S.; asc. 118 ft. over SW. slope.
30.93	Spur, slopes S.; desc. 48 ft. over SE. slope.
35.10	Head of ravine, course S.; asc. 85 ft. over broken SW. slope to
39.93	Set an iron post, 3 ft. long, 1 in. diam., 24 ins. in the ground to bedrock, with a stone marked with a cross (X) deposited at base, and in a mound of stone to top, for $\frac{1}{4}$ sec. cor., with brass cap marked
	$\frac{1}{4} \begin{array}{r} S \ 30 \\ S \ 31 \end{array}$ <p>1938</p> <p>No bearing trees available.</p> <p>Asc. 88 ft. over broken SW. slope.</p>
44.66	Point of spur, slopes S.; desc. 248 ft. over broken E. slope.
59.73	Bottom of ravine, course SW.; asc. 312 ft. over NW. slope.
72.13	Ridge, bears NE. and SW. Enter gently rolling land; desc. 23 ft. over SE. slope to
79.93	The cor. of secs. 29, 30, 31 and 32.
	<p>Land, mountainous and gently rolling.</p> <p>Soil, rocky, 4th rate.</p> <p>Timber, paloverde.</p> <p>Undergrowth, cacti.</p>
	N. 0° 03' W.; bet. secs. 29 and 30.
	Over gently rolling land, thru scattering timber and undergrowth. Asc. 24 ft. over SE. slope.
7.00	Ridge, bears NE. and SW. Enter heavily rolling land; desc. 112 ft. over NW. slope.
22.10	Head of draw, course SW.; asc. 91 ft. over SW. slope.
37.88	Spur, slopes SW.; desc. 5 ft. over W. slope to
40.00	Set an iron post, 3 ft. long, 1 in. diam., 10 ins. in the ground to bedrock, with a stone marked with a cross (X) deposited at base, and in a mound of stone to top, for $\frac{1}{4}$ sec. cor., with brass cap marked
	$\frac{1}{4} \begin{array}{r} S30 \mid S29 \end{array}$ <p>1938</p> <p>No bearing trees available.</p> <p>Descend 122 ft. over NW. slope.</p>

Survey: Subdivision of T. 9 S., R. 1 W.

54

Chains							
48.85	Bottom of ravine; course SW. Thence over heavily rolling and mountainous land; asc. 209 ft. over SE. slope.						
70.45	Spur, slopes SW.; desc. 42 ft. over W. slope.						
76.40	Asc. 47 ft. over steep W. slope to						
80.00	Set an iron post, 3 ft. long, 2 ins. diam., 14 ins. in the ground to bedrock, with a stone marked with a cross (X) deposited at base, and in a mound of stone to top, for cor. of secs. 19, 20, 29 and 30, with brass cap marked						
	<div style="text-align: center;"> <table> <tr> <td>T9S</td><td>R1W</td></tr> <tr> <td>S19</td><td>S20</td></tr> <tr> <td>S30</td><td>S29</td></tr> </table> </div>	T9S	R1W	S19	S20	S30	S29
T9S	R1W						
S19	S20						
S30	S29						
	1938						
	No bearing trees available.						
	Land, gently and heavily rolling and mountainous. Soil, rocky, 4th rate. Timber, paloverde. Undergrowth, cacti.						
	S. 89° 55' E., on random line, bet. secs. 20 and 29.						
40.00	Set temp. $\frac{1}{4}$ sec. cor.						
80.06	Intersect N. and S. line, 4 lks. S. of the cor. of secs. 20, 21, 28 and 29.						
	Thence						
	N. 89° 57' W., on true line, bet. secs. 20 and 29.						
	Over heavily rolling and mountainous land, thru scattering timber. Desc. 26 ft. over S. slope.						
14.30	Draw, course S. 60° E.; asc. 288 ft. over NE. slope.						
33.20	Spur, slopes S. 70° E.; from N.; desc. 95 ft. over W. slope.						
38.29	Head of draw, course S. for 6 chs., thence SE.; asc. 33 ft. over E. slope to						
40.03	Set an iron post, 3 ft. long, 1 in. diam., 12 ins. in the ground to bedrock, with a stone marked with a cross (X) deposited at base, and in a mound of stone to top, for $\frac{1}{4}$ sec. cor., with brass cap marked						
	<div style="text-align: center;"> <table> <tr> <td>$\frac{1}{4}$</td><td>S 20</td></tr> <tr> <td></td><td>S 29</td></tr> </table> </div>	$\frac{1}{4}$	S 20		S 29		
$\frac{1}{4}$	S 20						
	S 29						
	1938						
	No bearing trees available.						
	Asc. 41 ft. over broken E. slope.						
42.90	Ridge, bears N. and S.; desc. 164 ft. over W. slope.						
49.70	Bottom of ravine, 10 lks. wide, course S. 10° W.; asc. 204 ft. over E. slope.						
59.00	Spur, slopes S.; desc. 220 ft. over W. slope.						

Survey: Subdivision of T. 9 S., R. 1 W.

BOOK 4250

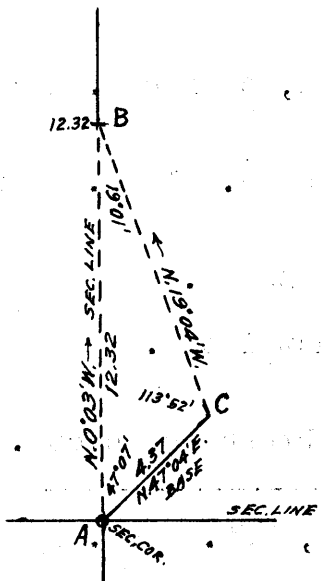
55

Chains	
68.73	Bottom of ravine, 10 lks. wide, course S. 10° W.; asc. 86 ft. over E. slope.
74.70	Long spur, slopes S. 20° W.; desc. 91 ft. over W. slope to
80.06	The cor. of secs. 19, 20, 29 and 30. Land, heavily rolling and mountainous. Soil, rocky, 4th rate. Timber, palo verde. Undergrowth, greasewood, sagebrush and cacti.
	N. 89° 59' W., on random line, bet. secs. 19 and 30.
40.00	Set temp. $\frac{1}{4}$ sec. cor.
79.84	Intersect W. bdy. of Tp., 4 lks. S. of the cor. of secs. 19, 24, 25 and 30, hereinbefore described. Thence S. 89° 57' E., on true line, bet. secs. 19 and 30. Over gently rolling land, thru scattering timber and undergrowth. Desc. 22 ft. over SE. slope.
12.74	Wash, course S. from NE.; asc. 23 ft. over SW. slope to
21.54	Wash, 10 lks. wide, course S. 60° W.; asc. 42 ft. over SW. slope to
39.84	Set an iron post, 3 ft. long, 1 in. diam., on exposed bedrock, over a cross (X) marked thereon and in a mound of stone to top, for $\frac{1}{4}$ sec. cor., with brass cap marked $\begin{array}{r} \frac{1}{4} \text{ S } 19 \\ \text{S } 30 \end{array}$ 1938 No bearing trees available. Thence over heavily rolling and mountainous land; thru scattering timber and undergrowth. Asc. 421 ft. over W. and SW. slopes to
79.84	The cor. of secs. 19, 20, 29 and 30. Land, gently and heavily rolling and mountainous. Soil, rocky, 4th rate. Timber, palo verde and ironwood. Undergrowth, sagebrush, greasewood and cacti.
	N. 0° 03' W., bet. secs. 19 and 20. Over mountainous land, thru scattering timber and undergrowth. Asc. 150 ft. over W. face of cliffs. Chaining is impracticable, therefore triangulate measurement across cliffs as follows: Designate the cor. of secs. 19, 20, 29 and 30 as triangulation point "A".

Survey: Subdivision of T. 9 S., R. 1 W.

56

Chains



Set flag "B" ahead on sec. line, beyond the cliffs, the vertical angle to which is $+10\frac{1}{2}^\circ$.

From "A" chain a base N. $47^\circ 04'$ E., 4.37 chs. to point "C", from which the flag "B" is visible and bears N. $19^\circ 04'$ W.

Included angles of the triangle "A-B-C" are: $47^\circ 07'$, $19^\circ 01'$ and $113^\circ 52'$; the sum of which is $180^\circ 00'$.

Dist. by triangulation, "A" to "B" = 12.32 chs. N. $0^\circ 03'$ W.

- 12.32 Triangulation point "B" at head of ravine, course W: Begin chaining, and continue measurement of sec. line N. $0^\circ 03'$ W. Asc. 75 ft. over S. slope.
- 18.00 Spur, slopes SW.; asc. slightly over W. slope.
- 19.20 Desc. 274 ft. over steep NW. slope.
- 30.50 Head of ravine, course NW.; desc. 146 ft. over steep W. slope to
- 37.04 Spur, slopes NW.; desc. 32 ft. over NE. slope to
- 40.00 Set an iron post, 3 ft. long, 2 ins. diam., 27 ins. in the ground, with a stone marked with a cross (X) deposited at base, and in a mound of stone to top, for $\frac{1}{4}$ sec. cor., with brass cap marked

$\frac{1}{4}$

S19 | S20

1938

No bearing trees available.

Descend 184 ft. over NE. slope.

- 50.72 Draw, course N. 75° W. Enter rolling land; desc. 42 ft. over W. and NW. slopes.
- 66.50 Wash, 30 lks. wide, course S. 27° W.; asc. 70 ft. over S. slope to
- 80.00 Set an iron post, 3 ft. long, 2 ins. diam., 27 ins. in the ground, for cor. of secs. 17, 18, 19 and 20, with brass cap marked

T9S R1W

S18 | S17

S19 | S20

1938

No bearing trees available.

Raise a mound of stone, 3 ft. base, 2 ft. high, W. of cor.

Land, mountainous and rolling:
Soil, rocky, 4th rate.
Timber, paloverde.
Undergrowth, cacti.

Survey: Subdivision of T. 9 S., R. 1 W.

BOOK 4220

57

Chains	S. 89° 57' E., on random line, bet. secs. 17 and 20.
40.00	Set temp. $\frac{1}{4}$ sec. cor.
80.08	Intersect the cor. of secs. 16, 17, 20 and 21.
	Thence
	N. 89° 57' W., on true line, bet. secs. 17 and 20.
	Over mountainous and heavily rolling land, thru scattering timber and undergrowth. Asc. 63 ft. over SE. slope.
3.60	Point of spur, slopes SE.; desc. 67 ft. over W. slope.
7.70	Draw, 10 lks. wide, course S. for 1 ch., thence SE.; asc. 44 ft. over NE. slope.
13.50	Toe of spur, slopes N.; desc. 23 ft. over NW. slope.
18.50	Same draw, course NE.; asc. 30 ft. over S. slope.
23.30	Same draw, course SE.; asc. 47 ft. over NE. slope.
31.06	Same draw, course NE. near head; asc. 147 ft. over E. slope to
40.04	Set an iron post, 3 ft. long, 1 in. diam., 6 ins. in the ground to bedrock, with a stone marked with a cross (X) deposited at base, and in a mound of stone to top, for $\frac{1}{4}$ sec. cor., with brass cap marked
	$\frac{1}{4} \frac{S 17}{S 20}$
	1938
	No bearing trees available.
	Asc. 5 ft. over E. slope;
42.10	Ridge, bears NW. and SE.; desc. 149 ft. over W. slope to
53.60	Desc. 218 ft. over NW. slope:
66.26	Foot of slope, bears N. and S. Thence over gently rolling land; desc. slightly over NW. slope:
68.90	Wash, 20 lks. wide, course SW.; asc. 26 ft. over SE. and S. slopes to
80.08	The cor. of secs. 17, 18, 19 and 20.
	Land, mountainous, heavily and gently rolling.
	Soil, rocky, 4th rate.
	Timber, paloverde.
	Undergrowth, greasewood and cacti.
	N. 89° 57' W., on random line, bet. secs. 18 and 19.
40.00	Set temp. $\frac{1}{4}$ sec. cor.
79.74	Intersect W. bdy. of Tp., 2 lks. S. of the cor. of secs. 13, 18, 19 and 24, hereinbefore described.
	Thence
	S. 89° 56' E., on true line, bet. secs. 18 and 19.

Survey: Subdivision of T. 9 S., R. 1 W.

58

Chains	Over gently rolling land, thru scattering timber and undergrowth. Desc. 20 ft. over SE. slope.
7.30	Wash, course S. Enter heavily rolling and mountainous land; asc. 235 ft. over W. slope.
20.80	Spur, slopes S.; desc. 210 ft. over SE. slope.
32.48	Wash, course SW.; asc. 116 ft. over NW. slope to
39.74	Set an iron post, 3 ft. long, 1 in. diam., 12 ins. in the ground to bedrock, with a stone marked with a cross (X) deposited at base, and in a mound of stone to top, for $\frac{1}{4}$ sec. cor., with brass cap marked
	$\begin{array}{r} \frac{1}{4} \frac{S \ 18}{S \ 19} \\ 1938 \end{array}$
	No bearing trees available.
	Ascend 115 ft. over NW. slope.
48.60	Ridge, bears N. 20° E. and S. 20° W., desc. 38 ft. over SE. slope.
53.40	Draw, course SW.; asc. 230 ft. over W. slope.
63.30	Spur, slopes S.; desc. 283 ft. over E. slope.
70.94	Draw, course S. 20° E.; asc. 40 ft. over SW. slope.
76.70	Desc. 39 ft. over S. slope to
79.74	The cor. of secs. 17, 18, 19 and 20. Land, rolling and mountainous. Soil, rocky, 4th rate. Timber, paloverde. Undergrowth, greasewood and cacti.
	N. 0° 03' W., bet. secs. 17 and 18.
	Over mountainous land, thru scattering timber and undergrowth. Asc. 147 ft. over steep broken S. slope to
8.36	Foot of cliffs, bearing NE. and SW., facing SE. It being impracticable to continue chaining on sec. line, on account of cliffs, obtain measurement by offset line as follows: From 8.36 ch. station on sec. line chain measurement East, 2.80 chs.; thence, N. 0° 03' W., 5.09 chs.; thence West, 2.80 chs., returning to sec. line at 13.45 ch. station thereon.
12.45	Ridge, bears NE. and SW., 274 ft. above cor. of secs. 17, 18, 19 and 20. Desc. 15 ft. over N. slope to
13.45	Offset point on sec. line. Thence, N. 0° 03' W., on sec. line, continuing measurement. Desc. 240 ft. over steep N. slope.
29.00	Wash, course SW.; asc. 151 ft. over S. slope to

Chains

40.00

Set an iron post, 3 ft. long, 1 in. diam., 8 ins. in the ground to bedrock, with a stone marked with a cross (X) deposited at base, and in a mound of stone to top, for $\frac{1}{4}$ sec. cor., with brass cap marked

. . . $\frac{1}{4}$. . .

. . . S18 | S17 . . .

. . . 1938 . . .

. No bearing trees available. .

Asc. 67 ft. over S. slope.

48.84

Spur, slopes SE.; desc. 60 ft. over NE. slope.

53.57

Bottom of ravine, course SE.; asc. 521 ft. over S. slope.

76.35

Ridge, bears NE. and SW.; desc. 107 ft. over NW. slope.

79.75

Head of ravine, course S. 80° W.; asc. slightly over SW. slope to

80.00

Set an iron post, 3 ft. long, 2 ins. diam., 12 ins. in the ground to bedrock, with a stone marked with a cross (X) deposited at base and in a mound of stone to top, for cor. of secs. 7, 8, 17 and 18, with brass cap marked

T9S R1W . . .

S7 | S8

S18 | S17

1938

No bearing trees available.

Land, mountainous.

Soil, rocky, 4th rate.

Timber, palo verde.

Undergrowth, cacti and greasewood.

S. 89° 57' E., on random line, bet. secs. 8 and 17.

40.00

Set temp. $\frac{1}{4}$ sec. cor.

80.06

Intersect N. and S. line, 3 lks. N. of the cor. of secs. 8, 9, 16 and 17.

Thence

N. 89° 56' W., on true line, bet. secs. 8 and 17.

Over heavily rolling and mountainous land, thru scattering timber and undergrowth; desc. 24 ft. over S. slope.

9.20

Wash, 8 lks. wide, course SE.; asc. 56 ft. over SE. slope.

16.47

Spur, slopes SE.; desc. 20 ft. over S. slope.

28.07

Wash, 20 lks. wide, course SE.; asc. 60 ft. over NE. slope to

40.03

Set an iron post, 3 ft. long, 1 in. diam., 12 ins. in the ground to bedrock, with a stone marked with a cross (X) deposited at base and in a mound of stone to top, for $\frac{1}{4}$ sec. cor., with brass cap marked

Survey: Subdivision of T. 9 S., R. 1 W.

BOOK 4230

Chains	point "B" at W.C. to cor. of secs. 7, 12, 13 and 18 is 79.72 chs. S. 88° 50' W.; the latitude and departure of which are: 1.62+ chs. S. and 79.70 chs. W., respectively. The W.C. to cor. of secs. 7, 12, 13 and 18 being 1.70 chs. S. of true point for sec. cor., the random line extended N.89°56'W., would at 79.70 Intersect W. bdy. of Tp., 1 lks. N. of the true point for cor. of secs. 7, 12, 13 and 18, witnessed 1.70 chs. S. as hereinbefore described. Thence, from true point, for sec. cor., S. 89° 56' E., on true line, bet. secs. 7 and 18. Over mountainous land, thru scattering timber and undergrowth. Measurement of 30.40 chs. by triangulation, hereinbefore described. Desc. about 570 ft. over cliffs facing SE. 19.70 (Approx.) Wash, 15 lks. wide, course SE., in bottom of canyon heading about 8 chs. NW. Asc. about 225 ft. over steep, broken SW. slope to 30.40 Triangulation point "A" at W. edge of top of spur, sloping SE. Begin chaining and continue line and measurement. Over gently rolling top of spur. 34.30 Leave top of spur. Desc. 105 ft. over E. slope to 39.70 Set an iron post, 3 ft. long, 1 in. diam., 12 ins. in the ground to bedrock, with a stone marked with a cross (X) deposited at base and in a mound of stone to top, for ¼ sec. cor., with brass cap marked <div>¼ $\frac{S. 7}{S. 18}$ 1938</div> No bearing trees available. Desc. 153 ft. over E. slope. 41.50 Draw, course SE.; asc. 52 ft. over SW. slope. 45.00 Point of spur, slopes S.; desc. 64 ft. over SE. slope. 51.15 Draw, course SW.; asc. 37 ft. over NW. slope to 57.30 Same draw, course NW.; asc. 77 ft. over NW. slope. 62.06 Point of spur, slopes NW.; desc. 19 ft. over NE. slope. 64.97 Bottom of ravine, course NW.; asc. 218 ft. over SW. slope to 79.70 The cor. of secs. 7, 8, 17 and 18. Land, mountainous. Soil, rocky, 4th rate. Timber, paloverde. Undergrowth, cacti.
--------	--

Survey: Subdivision of T. 9 S., R. 1 W.

62

Chains	N. 0° 03' W., bet. secs. 7 and 8. Over mountainous land, thru scattering timber and undergrowth. Asc. 133 ft. over S. and SW. slopes.
9.25	Spur, slopes W., near point of same; desc. 227 ft. over NW. slope.
17.32	Wash, course W.; asc. 15 ft. over SW. slope.
19.65	Desc. 21 ft. over NW. slope.
25.20	Draw, course SW.; asc. 128 ft. over S. slope.
34.85	Head of same draw, course SE.; asc. 176 ft. over S. slope to
40.00	Set an iron post, 3 ft. long, 1 in. diam., 12 ins. in the ground to bedrock, with a stone marked with a cross (X) deposited at base, and in a mound of stone to top, for $\frac{1}{4}$ sec. cor., with brass cap marked <div>S7 S8 1938</div> No bearing trees available. Ascend 104 ft. over vertical cliff, bearing E. and W., facing S.
40.58	Top of vertical cliff; asc. 370 ft. over S. slope.
49.07	High, rocky spur, slopes W.; desc. 327 ft. over N. slope.
60.60	Draw, course NW.; asc. 69 ft. over SW. slope.
66.75	Desc. 109 ft. over NW. slope.
73.10	Bottom of ravine, course W.; asc. 62 ft. over SW. slope to
80.00	Set an iron post; 3 ft. long, 2 ins. diam., on exposed bedrock, over a cross (X) marked thereon and in a mound of stone to top, for cor. of secs. 5, 6, 7 and 8, with brass cap marked <div>T9S R1W S6 S5 S7 S8 1938</div> No bearing trees available. Land, mountainous. Soil, rocky, 4th rate. Timber, paloverde and ironwood. Undergrowth, cacti and greasewood.
27.22	S. 89° 56' E., on random line; bet. secs. 5 and 8. Discontinue chaining on random sec. line owing to cliffs ahead. Obtain measurement by offset line as follows: From 27.22 ch. station chain measurement North, 2.65 chs.; thence S. 89° 56' E., 12.78 chs.; thence, South, 2.65 chs., returning to random sec. line at

Chains	
40.00	Offset point. Set temp. $\frac{1}{4}$ sec. cor. Thence, S. $89^{\circ} 56'$ E., on random line, bet. secs. 5 and 8, continuing measurement.
80.10	Intersect the cor. of secs. 4, 5, 8 and 9. Thence N. $89^{\circ} 56'$ W., on true line bet. secs. 5 and 8. Over mountainous and heavily rolling land, thru scattering timber and undergrowth. Asc. 5 ft. over S. slope.
2.60	Desc. 22 ft. over SW. slope.
6.70	Wash, 20 lks. wide, in bottom of gulch, course SE.; asc. 320 ft. over NE. slope.
32.28	Point of spur, slopes NE.; desc. 16 ft. over N. slope.
35.00	Bottom of ravine, course NE.; heads 5 chs. SW.; asc. 160 ft. over steep, rocky NE. slope to
40.05	Set an iron post, 3 ft. long, 1 in. diam., on exposed bedrock, over a cross (X) marked thereon, and in a mound of stone to top, for $\frac{1}{4}$ sec. cor., with brass cap marked $\frac{1}{4} \frac{S \ 5}{S \ 8}$ 1938 No bearing trees available.
40.10	Offset point. Continue measurement on sec. line. Asc. 47 ft. over steep NE. slope to
41.70	Base of perpendicular cliff, 200 ft. high, bearing NW. and SE., facing NE. Discontinue chaining on sec. line owing to cliffs ahead. Measurement by offset line, North, 2.65 chs. from 40.10 ch. station; thence N. $89^{\circ} 56'$ W., 12.78 chs.; thence South, 2.65 chs., returning to sec. line at 52.88 ch. station thereon.
50.00	(Approx.) Ridge, bears NW. and SE., 300 ft. above $\frac{1}{4}$ sec. cor. Desc. 45 ft. over SW. slope to
52.88	Offset point. Thence, N. $89^{\circ} 56'$ W., on sec. line, continuing measurement. Desc. 150 ft. over SW. slope.
59.75	Head of draw, course SW.; asc. 35 ft. over SE. slope.
62.60	Spur, slopes SW.; desc. 171 ft. over W. slope.
72.80	Draw, course SW.; asc. 58 ft. over SE. slope.
76.90	Spur, slopes S. near point of same; desc. 51 ft. over SW. slope to
80.10	The cor. of secs. 5, 6, 7 and 8. Land, mountainous and heavily rolling. Soil, rocky, 4th rate. Timber, paloverde and ironwood. Undergrowth, cacti.

64

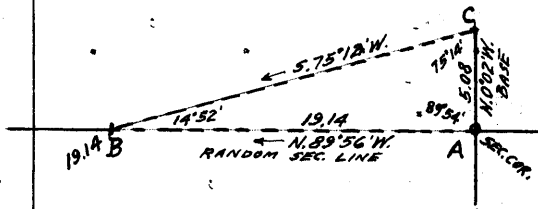
Chains

N. 89° 56' W., on random line, bet. secs. 6 and 7.

Precipitous slopes and cliffs in a canyon renders chaining impracticable, therefore triangulate across canyon as follows:

Designate cor. of secs. 5, 6, 7 and 8 as triangulation point "A".

Set flag "B" ahead on random line on W. side of canyon, the vertical angle to which is $+6\frac{1}{2}^\circ$.



From "A" chain a base N. 0° 02' W., 5.08 chs. to point "C", from which flag "B" bears S. 75° 12' W.

A longer base is impracticable.

Included angles of triangle "A-B-C" are: 89° 54', 14° 52', and 75° 14'; the sum of which is 180° 00'.

Dist. by triangulation "A" to "B" = 19.14 chs. N. 89° 56' W.

19.14 Triangulation point "B".

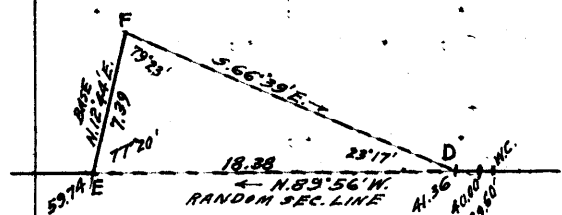
Begin chaining and continue measurement on random line, N. 89° 56' W.

39.60 Set temp. witness cor. to $\frac{1}{4}$ sec. cor.

40.00 Point for temp. $\frac{1}{4}$ sec. cor. is on face of cliff where it is inaccessible.

41.36 Discontinue chaining owing to precipitous slope and cliffs in a canyon ahead. Triangulate measurement across canyon as follows:

Set flag "D" at 41.36 ch. station on random line.



From point "E" ahead on random line chain a base N. 12° 44' E. 7.39 chs. to point "F" from which the flag "D" bears S. 66° 39' E.

Vertical angle "D" to "E" is $-2\frac{1}{4}^\circ$.

Included angles of triangle "D-E-F" are: 23° 17', 77° 20', and 79° 23', the sum of which is 180° 00'.

Dist. on random line to "D" = 41.36 chs. N. 89° 56' W.
Triang. dist. "D" to "E" = 18.38 chs. N. 89° 56' W.
Dist. on random line to "E" = 59.74 chs. N. 89° 56' W.

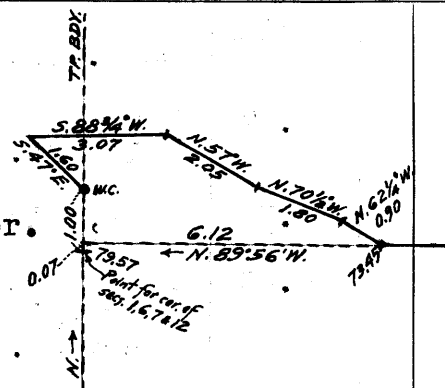
59.74 Triangulation point "E".

Resume chaining, and continue line and measurement.

73.45 Discontinue chaining on random line owing to cliffs ahead. Obtain measurement of remainder of random line by traverse as follows:

Chains

From 73.45 ch. station:
 N. $62\frac{1}{4}^\circ$ W., 0.90 chs.
 N. $70\frac{1}{2}^\circ$ W., 1.80 chs.
 N. 57° W., 2.05 chs.
 S. $88\frac{3}{4}^\circ$ W., 3.07 chs.
 S. 47° E., 1.60 chs. to witness cor.
 to cor. of secs. 1, 6, 7 and 12,
 on W. bdy. of Tp., established
 1.00 ch. N. of the true point for
 the sec. cor. as hereinbefore
 described.



The latitude and departure of the above described traverse to W.C. are:

0.94 chs. N. and 6.12 chs. W., respectively.

The latitude and departure of random sec. line to 73.45 ch. station are:

0.085 chs. N. and 73.45 chs. W., respectively.

Total lat. and dep. of random line and traverse to W.C. are therefore: 1.025 chs. N. and 79.57 chs. W., respectively.

The random line extended will therefore at

79.57 Intersect W. bdy. of the Tp. 7 lks. N. of the true point for cor. of secs. 1, 6, 7 and 12, witnessed 1.00 ch. N. as hereinbefore described.

Thence, from sec. cor. point,

S. $89^\circ 59'$ E., on true line, bet. secs. 6 and 7.

Over mountainous land, thru scattering timber and undergrowth. Over cliffs facing N. and NE. Measurement by traverse hereinbefore described.

6.12 A point 6 lks. S. of traverse point on random line. Thence on sec. line continuing measurement. Desc. 56 ft. over steep E. slope.

12.17 Head of ravine, course S. 30° W.; asc. 250 ft. over steep W. slope.

18.50 Ridge, bears N. and S.; desc. 28 ft. over E. slope to

19.83 W. rim of canyon, bears N. and S. Discontinue chaining. Measurement across canyon by triangulation hereinbefore described. Desc. about 250 ft. over cliffs facing E.

29.50 (Approx.) Bottom of canyon, course N.; asc. about 300 ft. over cliffs facing W. and NW.

38.21 Top of cliffs. Resume chaining. Asc. gradually over top of spur sloping N.

39.57 True point for $\frac{1}{4}$ sec. cor. is on N. face of cliff, bearing SW. and SE., where it is impracticable to monument the cor., therefore establish witness cor. 40 lks. S. $89^\circ 59'$ E.

39.97 Set an iron post, 3 ft. long, 1 in. diam., 12 ins. in the ground to bedrock, with a stone marked with a cross (X) deposited at base, and in a mound of stone to top, for witness cor. to $\frac{1}{4}$ sec. cor. with brass cap marked

WC $\frac{1}{4}$ S 6
S 7

1938

No bearing trees available.

Survey: Subdivision of T. 9 S., R. 1 W.

66

Chains	Desc. 200 ft. over NE. slope.
52.67	Bottom of ravine, course N. 70° W. from S. 30° E.; asc. 146 ft. over W. slope.
59.33	Spur, slopes NW. Thence over top of spur.
60.43	Leave top of spur. Discontinue chaining. Measurement by triangulation across canyon as hereinbefore described. Desc. about 280 ft. over cliffs facing E.
73.50	(Approx.) Bottom of canyon, course N.; asc. about 150 ft. over precipitous, broken SW. slope to
79.57	The cor. of secs. 5, 6, 7 and 8. Land, mountainous. Soil, 4th rate. Timber, paloverde. Undergrowth, cacti.
	N. 0° 03' W., on random line, bet. secs. 5 and 6.
40.00	Set temp. $\frac{1}{4}$ sec. cor.
80.20	Intersect N. bdy. of Tp., 19 lks. W. of the cor. of secs. 5, 6, 31 and 32, hereinbefore described. Thence S. 0° 05' W., on true line, bet. secs. 5 and 6. Over mountainous land, thru scattering timber and undergrowth. Desc. 9 ft. over steep W. slope.
2.12	Desc. 13 ft. over SW. slope.
4.64	Bottom of ravine, course W.; asc. 701 ft. over steep N. slope.
25.20	High, rocky ridge, bears E. and W.; desc. 460 ft. over steep S. slope to
40.20	Set an iron post, 3 ft. long, 1 in. diam., on exposed bedrock, over a cross (X) marked thereon and in a mound of stone to top, for $\frac{1}{4}$ sec. cor., with brass cap marked
	$\frac{1}{4}$ S6. S5 1938 No bearing trees available.
	Desc. 30 ft. over steep S. slope.
41.84	Bottom of ravine, course S. 70° E.; asc. 247 ft. over steep NE. slope.
53.40	Ridge, bears N. 70° W. and S. 70° E.; desc. 313 ft. over steep SE. slope.
71.02	Draw, course SW.; asc. 75 ft. over NW. slope.
74.50	Point of spur, slopes SW.; desc. 34 ft. over SW. slope to
80.20	The cor. of secs. 5, 6, 7 and 8.

Chains

Land, mountainous.

Soil, rocky, 4th rate.

Timber, paloverde and ironwood.

Undergrowth; greasewood and cacti.

GENERAL DESCRIPTION.

Township 9 South, Range 1 West is situated in the Gila River drainage basin, at the southeast end of the Sand Tank Mountains, about 30 miles SE. from the southerly extremity of a large horseshoe bend in the Gila River, known as Gila Bend, which is also the name of a town on the Southern Pacific R.R. and U.S. Highway No. 80, about 4 miles south from same point of the river. The eastern part of this township is at the west side of the VEKOL Valley near the south end of same.

The elevation of this township ranges from about 2500 to 3600 feet above sea level, the highest elevation being in the northwestern part, and the lowest elevations in the eastern and northeastern parts.

The surface, ranging from level to mountainous, includes all of the intermediate classes; nearly level, gently rolling, rolling, and heavily rolling. Nearly all of the west half of the township has a mountainous and heavily rolling surface, on the ridges and spurs of the Sand Tank Mountains. The main divide of this range has a general northerly and southerly bearing extending thru the middle of the west half of the township. The surface of the greater part of the east half is nearly level and gently rolling.

The soil in all parts is gravelly and rocky, 3rd and 4th rates. There is a scattering growth of paloverde, ironwood, and mesquite timber in all sections, of little commercial value except for fence posts or fuel. Scattering undergrowth of greasewood, sagebrush, catclaw, jack-thorn and cacti, is prevalent in all sections, and there is a fair growth of grass in the northeastern part.

The land is arid, there being no springs, flowing streams, wells or tanks.

There are no settlers or residents, and no improvements except a barbed wire fence (4 wire) constructed by the U.S. Indian Service along the south half of the east bdy. of the Tp., which is a part of the north bdy. of the Papago Indian Reservation.

An ungraded desert road extending easterly from a point in section 16 thru the east half of the Tp., and several trails, constitute the only travel facilities within the township.

No evidence of valuable mineral deposits was observed in any part of the township during the survey.

All of the adjoining township to the south, and the south half of the adjoining township to the east, are within the Papago Indian Reservation.

FINAL FIELD TESTS OF INSTRUMENTS.

Buff and Buff transit No. 18002
Ty White, Public Land Surveyor.

March 5, 1938; at camp about 10 chs. south of the cor. of secs. 14, 15, 22 and 23, T. 9 S., R. 1 W., G. & S.R. Meridian, Arizona, in latitude $32^{\circ} 38' N.$; longitude $112^{\circ} 20\frac{1}{2}' W.$; examine the adjustments of Buff and Buff transit No. 18002 and find no errors; then to test the solar apparatus of same by comparing its indications with a true meridian determined by Polaris observation, proceed as follows:

At 8h. 44.7 m., p.m., l.m.t., observe Polaris at western elongation, making four observations, two each with the telescope in direct and reversed positions, and mark the mean point in the line thus determined, by a nail in a stake driven firmly in the ground, about 10 chs. N. Azimuth of Polaris at western elongation = $1^{\circ} 13' 04''$.

March 6; at 7h. 30m., a.m., lay off the azimuth of Polaris $1^{\circ} 13'$ to the east, and mark the true meridian thus determined, by a nail in a stake driven firmly in the ground, about 10 chs. N.

March 13; at 9h. 00m., a.m., app.t., set off $32^{\circ} 38' N.$ on the latitude arc; $2^{\circ} 58\frac{1}{2}' S.$ on the declination arc; and determine a meridian with the solar, which agrees with the true meridian.

At app. noon, with the latitude arc unchanged, observe the sun on the meridian, and obtain a reading of $2^{\circ} 56' S.$ on the declination arc, which agrees with the computed declination of the sun.

At 3h. 00m., p.m., app.t., with the latitude arc unchanged, set off $2^{\circ} 53' S.$ on the declination arc; and determine a meridian with the solar, which agrees with the true meridian.

As all of the solar observations made during the usual hours of solar work come within $1' 30''$ of the true meridian, conclude that this instrument is in satisfactory adjustment on this date, and that it has remained in such condition throughout the surveys executed with same which are described in the foregoing field notes.

Young and Sons' transit No. 8544
Armand F. Allard, Public Land Surveyor.

March 9, 1938; at same station described in the preceding test, examine the adjustments of Young and Sons' transit No. 8544, and find no errors; then, to test the solar apparatus of same by comparing its indications with the true meridian determined by Ty White at this station by Polaris observation on March 5, 1938 as hereinbefore described, proceed as follows:

At 9h. 00m., a.m., app.t., set off $32^{\circ} 38' N.$ on the latitude arc; $4^{\circ} 33' S.$ on the declination arc; and determine a meridian with the solar, which agrees with the true meridian.

At app. noon, with the latitude arc unchanged; observe the

sun on the meridian and obtain a reading of $4^{\circ} 30' S.$ on the declination arc, which agrees with the computed declination of the sun.

At 3h. 00m., p.m., app.t., with the latitude are unchanged; set off $4^{\circ} 27' S.$ on the declination arc, and determine a meridian with the solar, which agrees with the true meridian.

As all of the solar observations made during the usual hours of solar work come within $1' 30''$ of the true meridian, conclude that this instrument is in satisfactory adjustment on this date, and that it has remained in such condition throughout the surveys executed with same which are described in the foregoing field notes.

Buff and Buff transit No. 16723
Horace M. Muscott, Public Land Surveyor.

The continued satisfactory adjustment of Buff and Buff transit No. 16723 throughout the surveys executed with same which are described in the foregoing field notes, is indicated by the preliminary and final tests of same described in the field notes of survey of T..9 S., R. 2 W., executed under this group.

Buff and Buff transit No. 10125
Norville E. Shearer, Public Land Surveyor.

The continued satisfactory adjustment of Buff and Buff transit No. 10125 throughout the surveys executed with same which are described in the foregoing field notes, is indicated by the preliminary test of same described in the field notes of survey of T. 8 S., R. 1 W., executed under this group.

UNITED STATES
DEPARTMENT OF THE INTERIOR
GENERAL LAND OFFICE

FIELD ASSISTANTS

To
Armand F. Allard, Public Land Surveyor

[illegible]

72

BOOK 4230

CERTIFICATE OF SURVEYOR

I, Armand F. Allard, Public Land Surveyor, HEREBY CERTIFY upon honor that, in
 pursuance of special instructions bearing date of the 1st day of December, 1937
 received from the district cadastral engineer for Arizona, with assignment
 instructions dated Feb. 18, 1938, I have surveyed
Part of the Subdivision lines of
Township No. 9 South, Range No. 1 West

of the Gila & Salt River Meridian, in the State of Arizona, which are
 represented in the foregoing field notes as having been executed by me and under my direction; and that said
 survey has been made in strict conformity with said instructions, the Manual of Instructions for the Survey
 of the Public Lands of the United States, and in the specific manner described in the foregoing field notes.

C. Suzanne Wyo.
April 1, 1940

Armand F. Allard
Public Land Surveyor

~~CERTIFICATE OF APPROVAL~~~~Office of Supervisor of Surveys,~~~~_____, 19____~~~~The foregoing field notes of the survey of~~~~executed by~~~~under special instructions dated~~~~and assignment~~~~instructions dated~~~~having been critically examined, and~~

~~the necessary corrections made prior to their certification by the engineer, the said field notes, and the survey~~
~~therein described, are hereby approved.~~

~~_____
 Supervisor of Surveys.~~~~CERTIFICATE OF TRANSCRIPT~~~~I certify that the foregoing transcript of the field notes of the above described surveys in~~~~is a true copy of the original field notes on file in the public survey office.~~~~_____
 Supervisor of Surveys.~~

CERTIFICATE OF ~~UNITED STATES~~ SURVEYOR

I, Norville E. Shearer, Public Land Surveyor, HEREBY CERTIFY upon honor that, in pursuance of special instructions bearing date of the 1st day of December, 1937 received from the district cadastral engineer for Arizona, with assignment instructions dated February 18, 1938, I have surveyed _____

Part of the Subdivision Lines

of

Township No. 9 South, Range No. 1 West

of the Gila & Salt River Meridian, in the State of Arizona, which are represented in the foregoing field notes as having been executed by me and under my direction; and that said survey has been made in strict conformity with said instructions, the Manual of Instructions for the Survey of the Public Lands of the United States, and in the specific manner described in the foregoing field notes.

January 24, 1939

Phoenix, Arizona

North E Shearer

Public Land Surveyor

~~CERTIFICATE OF APPROVAL~~

~~OFFICE OF U.S. SUPERVISOR OF SURVEYS.~~

19

~~The foregoing field notes of the survey of~~

~~executed by _____,~~
~~under special instructions dated _____, and assignment~~
~~instructions dated _____, having been critically examined, and~~
~~the necessary corrections made prior to their certification by the engineer, the said field notes, and the survey~~
~~therein described, are hereby approved.~~

~~U.S. Supervisor of Surveys.~~

~~CERTIFICATE OF TRANSCRIPT~~

~~I CERTIFY that the foregoing transcript of the field notes of the above-described surveys in~~

~~is a true copy of the original field notes on file in the public survey office.~~

~~U.S. Supervisor of Surveys.~~

To

Public Land Surveyor

6-8412

120
74
BOOK 4280

CERTIFICATE OF SURVEYOR

I, Horace M. Muscott, Public Land Surveyor, HEREBY CERTIFY upon honor that, in pursuance of special instructions bearing date of the 1st day of December, 1937 received from the district cadastral engineer for Arizona, with assignment instructions dated February 3, 1938, I have surveyed

the West boundary

of

Township No. 9 South, Range No. 1 West

of the Gila & Salt River Meridian, in the State of Arizona, which ~~are~~ ^{is} represented in the foregoing field notes as having been executed by me and under my direction; and that said survey has been made in strict conformity with said instructions, the Manual of Instructions for the Survey of the Public Lands of the United States, and in the specific manner described in the foregoing field notes.

January 22, 1940

Phoenix, Arizona

Horace M. Muscott
Public Land Surveyor

CERTIFICATE OF APPROVAL

~~Office of Supervisor of Surveys,~~

19

~~The foregoing field notes of the survey of~~

~~executed by~~
~~under special instructions dated~~
~~instructions dated~~
~~the necessary corrections made prior to their certification by the engineer, the said field notes, and the survey~~
~~therein described, are hereby approved.~~

Supervisor of Surveys.

CERTIFICATE OF TRANSCRIPT

~~I certify that the foregoing transcript of the field notes of the above-described surveys in~~

~~is a true copy of the original field notes on file in the public survey office.~~

Supervisor of Surveys.

To

Public Land Surveyor

6-8412

CERTIFICATE OF SURVEYOR

I, Ty White, Public Land Surveyor, HEREBY CERTIFY upon honor that, in pursuance of special instructions bearing date of the 1st day of December, 1937, received from the district cadastral engineer for Arizona, with assignment instructions dated February 18, 1938, I have surveyed _____ the North boundary _____ and Part of the Subdivision Lines of _____ Township No. 9 South, Range No. 1 West _____ of the Gila & Salt River Meridian, in the State of Arizona, which are represented in the foregoing field notes as having been executed by me and under my direction; and that said survey has been made in strict conformity with said instructions, the Manual of Instructions for the Survey of the Public Lands of the United States, and in the specific manner described in the foregoing field notes.

February 5, 1941
Phoenix, Arizona

Ty White
 Public Land Surveyor

CERTIFICATE OF APPROVAL

OFFICE OF SUPERVISOR OF SURVEYS,
Denver, Colorado, Oct. 17, 1941

The foregoing field notes of the survey of the West and North boundaries _____ and Subdivision lines of _____ Township No. 9 South, Range No. 1 West _____ of the Gila and Salt River Meridian, in the State of Arizona executed by Horace M. Muscott, Ty White, Armand F. Allard and Norville E. Shearer, Public Land Surveyors _____, under special instructions dated December 1, 1937 for Group 197, Arizona and assignment instructions dated February 3 and 18, 1938 _____, having been critically examined, and the necessary corrections made prior to their certification by the engineer, the said field notes, and the survey therein described, are hereby approved.

Charles E. Johnson
 Supervisor of Surveys.

CERTIFICATE OF TRANSCRIPT

I CERTIFY that the foregoing transcript of the field notes of the above-described surveys in _____, is a true copy of the original field notes on file in the public survey office.

 Supervisor of Surveys.